



INDUSTRIAL

IND200 SERIES



12" Wide Reflector Industrial Luminaire



- 12" Wide Reflector Industrial Luminaire
- 22 Ga. Cold Rolled Steel Housing
- Baked White Polyester Finish
- Screw-On End Caps
- Reflector Secured by Quarter turn Fasteners
- Suitable for Damp Locations
- Available with:
 - Fluorescent, LED and LED T8 (Internally Driven)
 - Up-Light
 - 95% Enhanced Specular Aluminum Reflector
 - Low Density
 - Emergency Battery Pack
 - Switch
 - 14 Ga. Wire Guard



Photometric Data and IES Files are Available on www.lalighting.com



LOS ANGELES LIGHTING MFG. CO.

10141 OLNEY ST. / EL MONTE, CA 91731

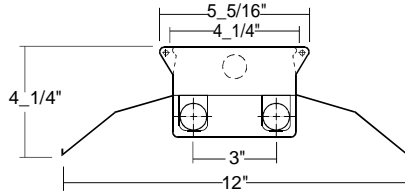
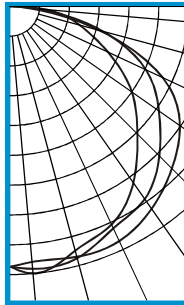
TEL : 626-454-8300 FAX : 626-454-8399

www.lalighting.com

PHOTOMETRIC DATA

IND200-2-4R-E8

TEST NO.=LA-T0413
 LAMP TYPE=FO32T8
 NO. OF LAMP=2
 LUMENS PER LAMP=2900
 WATTS PER LAMP=32
 BALLAST FACTOR=1
 PHOTOMETRY TYPE=C



CANDLEPOWER

ANGLE	END	45	CROSS
0	1405	1405	1405
5	1447	1422	1383
15	1361	1404	1398
25	1296	1319	1395
35	1157	1266	1330
45	968	1136	1233
55	797	977	1115
65	578	805	904
75	384	512	494
85	186	145	92
90	38	23	3
95	18	14	0
105	5	5	0
115	1	1	0
125	0	0	0
135	0	0	0
145	0	0	0
155	0	0	0
165	0	0	0
175	0	0	0
180	0	0	0

ZONAL LUMEN SUMMARY

DEGREES	LUMENS	% LAMP	% FIXTURE
0-30	1147	19.8	22.6
0-40	1935	33.4	38.1
0-60	3668	63.2	72.2
0-90	5060	87.2	99.6
90-120	20	0.3	0.4
90-150	20	0.3	0.4
90-180	20	0.3	0.4
0-180	5080	87.6	100.0

Lumen Output = 5080 lumens
 Luminaire Efficiency = 87.6%

SPACING CRITERION

ALONG	ACROSS
1.29	1.44

This space is intentionally left blank.

This space is intentionally left blank.

This space is intentionally left blank.

