



# INDUSTRIAL

## IND200 SERIES



# 12" Wide Reflector Industrial Luminaire



- 12" Wide Reflector Industrial Luminaire
- 22 Ga. Cold Rolled Steel Housing
- Baked White Polyester Finish
- Screw-On End Caps
- Reflector Secured by Quarter turn Fasteners
- Suitable for Damp Locations
- Available with:
  - Fluorescent, LED and LED T8 (Internally Driven)
  - Up-Light
  - 95% Enhanced Specular Aluminum Reflector
  - Low Density
  - Emergency Battery Pack
  - Switch
  - 14 Ga. Wire Guard



Photometric Data and IES Files are Available on [www.lalighting.com](http://www.lalighting.com)



**LOS ANGELES LIGHTING MFG. CO.**

10141 OLNEY ST. / EL MONTE, CA 91731

TEL : 626-454-8300 FAX : 626-454-8399

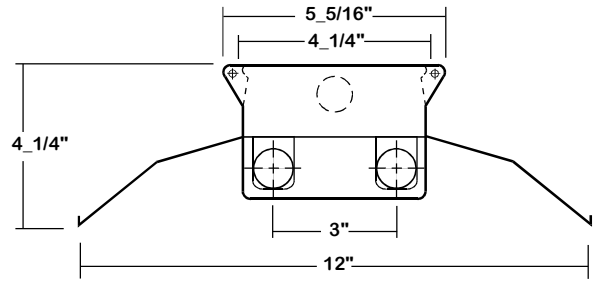
[www.lalighting.com](http://www.lalighting.com)

# INDUSTRIAL - LED T8 (Internally Driven)



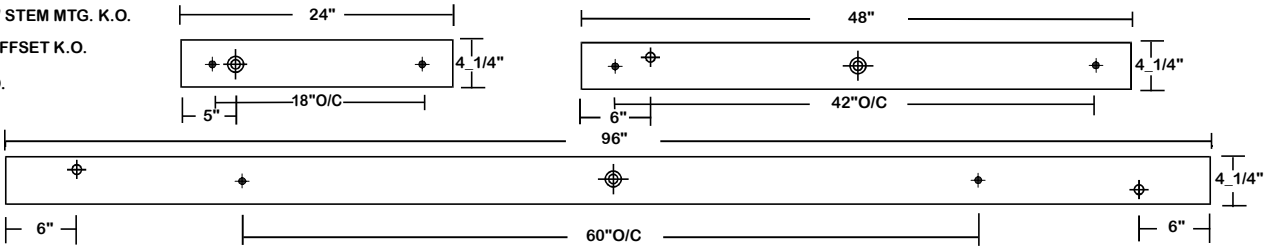
## IND200 SERIES - LED T8

### CROSS SECTION



### BACK PLATE

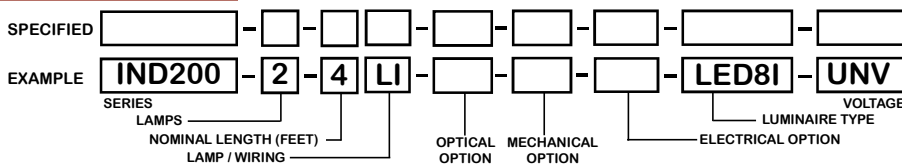
- ◆ 11/16" STEM MTG. K.O.
- ⊕ 7/8" OFFSET K.O.
- ⊕ 2" K.O.



### CATALOG NUMBER

|               | NOMINAL LENGTH | TOTAL MODULES |               | NOMINAL LENGTH | TOTAL MODULES |
|---------------|----------------|---------------|---------------|----------------|---------------|
| IND200-1-2Lx  | 2'             | 1             | IND200-2-2Lx  | 2'             | 2             |
| IND200-1-4Lx  | 4'             | 1             | IND200-2-4Lx  | 4'             | 2             |
| IND200-1-8LxT | 8'             | 2             | IND200-2-8LxT | 8'             | 4             |
|               |                |               | IND200-3-2Lx  | 2'             | 3             |
|               |                |               | IND200-3-4Lx  | 4'             | 3             |
|               |                |               | IND200-3-8LxT | 8'             | 6             |

### ORDERING GUIDE



### LAMP / WIRING

**LI = LED T8 internal driver light tube.**  
Both ends powered.  
Shunted sockets used.



**LR = LED T8 internal driver light tube.**  
Single end powered.  
Non-shunted sockets used.



**LO = LED T8 internal driver light tube.**  
Both ends powered, one wire connects lampholders together from each side.  
Non-shunted sockets used.



### OPTIONS AND ACCESSORIES

#### OPTICAL OPTIONS

- Lenses
- Louvers

#### SUFFIX

- \*
- \*

#### MECHANICAL OPTIONS

- Reflector End Enclosures

#### SUFFIX

- CE

#### ELECTRICAL OPTIONS

- LED Luminaire ON/OFF Safety Switch

#### SUFFIX

- TS2

#### ACCESSORIES

- Channel Hanger
- Wire Guard - 14 Ga.
- Coupling For Row Mounting
- 4" Leg Height V-Hook
- Fixture Suspending System

| CAT. NO.    |
|-------------|
| CH-200      |
| WG11-IND200 |
| CMC-200     |
| V4          |
| *           |

\*See appropriate reference page

### SPECIFICATIONS

- TYPE
- CONSTRUCTION
- FINISH
- REFLECTOR
- WIRING
- LABELS

Industrial luminaire for surface or suspended mounting.  
22 ga. cold rolled steel housing. (20 ga. housing available as specified.) End plates are fastened to housing by sheet metal screws to assure rigidity.  
Baked white polyester finish, minimum reflectance 86%. (Powder coated finish available.)  
22 ga. cold rolled steel reflector standard.  
Operate LED T8 internally driven light tube(s)\*\*.  
Suitable for damp locations.

\*\* Lamp(s) by others.

