



# INDUSTRIAL

## IND240 SERIES



# 11" Wide Reflector Industrial Luminaire



- 11" Wide Reflector Industrial Luminaire
- 22 Ga. Cold Rolled Steel Housing
- Baked White Polyester Finish
- Screw-On End Caps
- Reflector Secured by Quarter turn Fasteners
- Suitable for Damp Locations
- Available with:
  - Fluorescent, LED and LED T8 (Internally Driven)
  - Up-Light
  - 95% Enhanced Specular Aluminum Reflector
  - Low Density
  - Emergency Battery Pack
  - Switch
  - 14 Ga. Wire Guard



Photometric Data and IES Files are Available on [www.lalighting.com](http://www.lalighting.com)



### LOS ANGELES LIGHTING MFG. CO.

10141 OLNEY ST. / EL MONTE, CA 91731

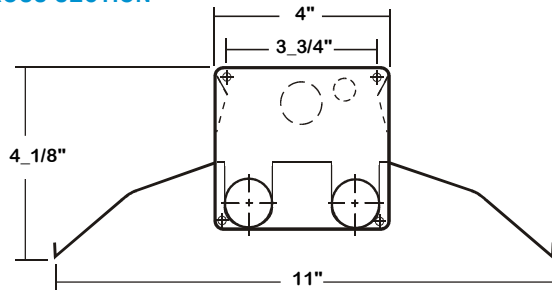
TEL : 626-454-8300 FAX : 626-454-8399

[www.lalighting.com](http://www.lalighting.com)



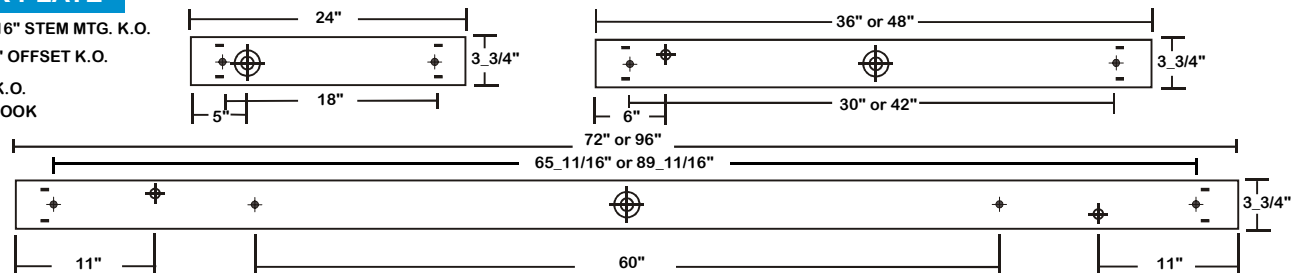
# IND240 SERIES

## CROSS SECTION



## BACK PLATE

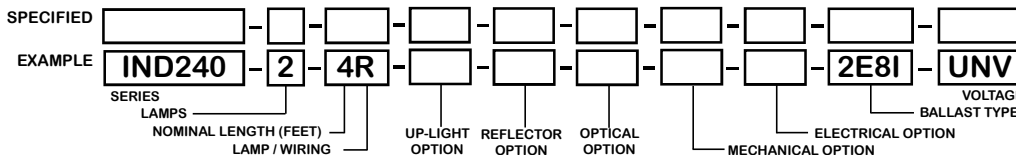
- ◆ 11/16" STEM MTG. K.O.
- ⊕ 7/8" OFFSET K.O.
- ⊕ 2" K.O.
- V-HOOK



## CATALOG NUMBER

	NOMINAL LENGTH	TOTAL LAMPS		NOMINAL LENGTH	TOTAL LAMPS		NOMINAL LENGTH	TOTAL LAMPS		NOMINAL LENGTH	TOTAL LAMPS
IND240-1-2M	2'	1	IND240-1-4S	4'	1	IND240-2-2M	2'	2	IND240-2-4S	4'	2
IND240-1-3M	3'	1	IND240-1-6S	6'	1	IND240-2-3M	3'	2	IND240-2-6S	6'	2
IND240-1-4M	4'	1	IND240-1-8S	8'	1	IND240-2-4M	4'	2	IND240-2-8S	8'	2
IND240-1-6MT	6'	2	IND240-1-12ST	12'	2	IND240-2-6MT	6'	4	IND240-2-12ST	12'	4
IND240-1-8MT	8'	2	IND240-1-16ST	16'	2	IND240-2-8MT	8'	4	IND240-2-16ST	16'	4
IND240-1-2R	2'	1	IND240-1-4H	4'	1	IND240-2-2R	2'	2	IND240-2-4H	4'	2
IND240-1-3R	3'	1	IND240-1-6H	6'	1	IND240-2-3R	3'	2	IND240-2-6H	6'	2
IND240-1-4R	4'	1	IND240-1-8H	8'	1	IND240-2-4R	4'	2	IND240-2-8H	8'	2
IND240-1-6RT	6'	2	IND240-1-12HT	12'	2	IND240-2-6RT	6'	4	IND240-2-12HT	12'	4
IND240-1-8RT	8'	2	IND240-1-16HT	16'	2	IND240-2-8RT	8'	4	IND240-2-16HT	16'	4

## ORDERING GUIDE



### NOTE: LAMP/WIRING\*

- M = Miniature Bi-Pin T5
- MT = Miniature Bi-Pin T5, Tandem Wiring
- R = Medium Bi-Pin T8
- RT = Medium Bi-Pin T8, Tandem Wiring
- S = Slimline
- ST = Slimline, Tandem Wiring
- H = High Output (800MA)
- HT = High Output, Tandem Wiring

## OPTIONS AND ACCESSORIES

### ● UP-LIGHT OPTIONS

- 10% Uplight SUFFIX S10
- 20% Uplight SUFFIX S20

### ● REFLECTOR OPTIONS

- Specular Aluminum Reflector (95%) SUFFIX SR

### ● OPTICAL OPTIONS

- Lenses SUFFIX \*
- Louvers SUFFIX \*

### ● MECHANICAL OPTIONS

- Low Density SUFFIX LD

### ● ELECTRICAL OPTIONS

- Emergency Battery Pack SUFFIX BP\*
- External Line Fusing (HLR/GLR) SUFFIX ELF
- Radio Interference Filters SUFFIX RIF
- Plug-In Branch Wiring Connector System SUFFIX PIW\*
- Switch SUFFIX \*

\*See Appropriate Reference Page

### ● BALLAST OPTIONS

- Electronic T5 SUFFIX E5\*
- Electronic T5HO SUFFIX E5H
- Electronic Step Dimming T5HO SUFFIX ESDM5H
- Electronic T8 SUFFIX E8\*
- Electronic Step Dimming T8 SUFFIX ESDM8\*

### ● ACCESSORIES

- Wire Guard - 14 Ga. CAT. NO. WG14-IND240
- 12" Coupling For Row Mounting CMC-240
- Channel Hangers CH-240
- 4" Leg Height V-Hook V4
- Fixture Suspension System \*

## SPECIFICATIONS

### ● TYPE

Industrial luminaire for surface or suspended mounting.

### ● CONSTRUCTION

22 ga. cold rolled steel housing. (20 ga. housing available as specified.) End plates are fastened to housing by sheet metal screws to assure rigidity.

### ● FINISH

Baked white polyester finish, minimum reflectance 86%. (Powder coated finish available.)

### ● REFLECTOR

24 ga. cold rolled steel reflector standard.

### ● WIRING

120v 60Hz., 277v 60Hz., UNV (universal voltage 120v thru 277v.) or as otherwise specified.

### ● LABELS

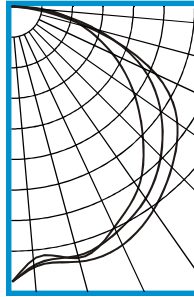
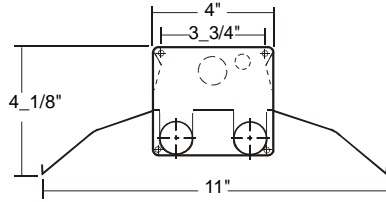
U.L. Listed. Suitable for damp locations.



**PHOTOMETRIC DATA**

**IND240-2-4R-E8**

TEST NO.=LA-T0281  
 LAMP TYPE=FO32T8  
 NO. OF LAMP=2  
 LUMENS PER LAMP=2900  
 WATTS PER LAMP=32  
 BALLAST FACTOR=1  
 PHOTOMETRY TYPE=C



**CANDLEPOWER**

ANGLE	END	45	CROSS
0	1487	1487	1487
5	1367	1401	1412
15	1406	1392	1427
25	1312	1343	1419
35	1191	1262	1336
45	999	1137	1222
55	800	979	1089
65	595	778	853
75	389	470	429
85	174	124	67
90	37	19	3
95	16	12	0
105	5	4	0
115	1	1	0
125	1	0	0
135	0	0	0
145	0	0	0
155	0	0	0
165	0	0	0
175	0	0	0
180	0	0	0

**ZONAL LUMEN SUMMARY**

DEGREES	LUMENS	% LAMP	% FIXTURE
0-30	1158	20.0	23.1
0-40	1952	33.6	38.9
0-60	3685	63.5	73.4
0-90	5000	86.2	99.6
90-120	18	0.3	0.4
90-150	18	0.3	0.4
90-180	18	0.3	0.4
0-180	5019	86.5	100.0

Lumen Output = 5019 lumens  
 Luminaire Efficiency = 86.5%

**SPACING CRITERION**

ALONG	ACROSS
1.25	1.38

This space is intentionally left blank.

This space is intentionally left blank.

This space is intentionally left blank.

