



INDUSTRIAL

IND500 SERIES



13½" Wide Reflector Industrial Luminaire



- 13½" Wide Reflector Industrial Luminaire
- 2 or 3 Lamp / Turret Lampholders
- 22 Ga. Cold Rolled Steel Housing
- Baked White Polyester Finish
- Screw-On End Caps
- Reflector Secured by Quarter turn Fasteners
- Suitable for Damp Locations
- Available with:
 - Fluorescent, LED and LED T8 (Internally Driven)
 - Up-Light
 - 95% Enhanced Specular Aluminum Reflector
 - Emergency Battery Pack
 - Switch
 - 14 Ga. Wire Guard



Photometric Data and IES Files are Available on www.lalighting.com



LOS ANGELES LIGHTING MFG. CO.

10141 OLNEY ST. / EL MONTE, CA 91731

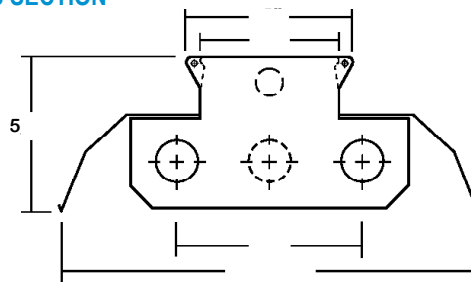
TEL : 626-454-8300 FAX : 626-454-8399

www.lalighting.com



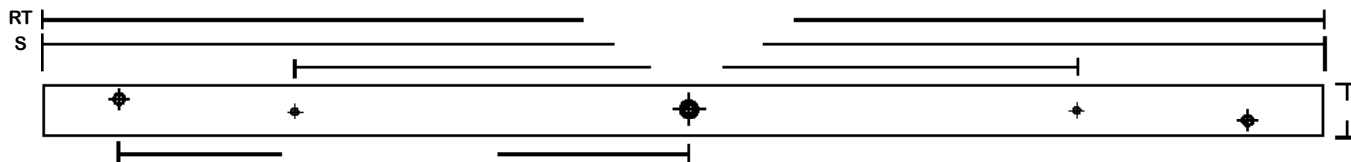
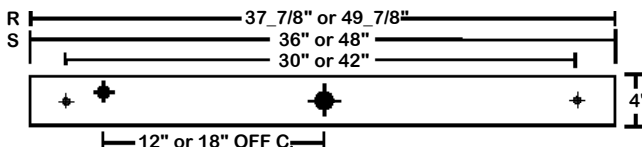
IND500 SERIES 2 OR 3 LAMPS

CROSS SECTION



BACK PLATE

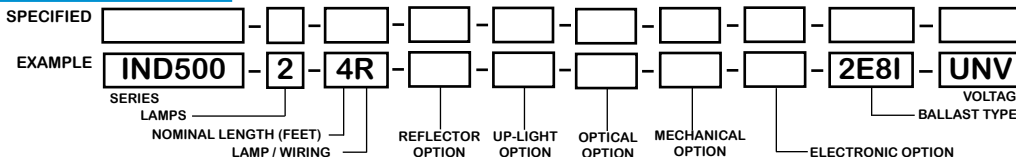
- ◆ 11/16" STEM MTG. K.O.
- ⊕ 7/8" OFFSET K.O.
- ⊕ 2" K.O.



CATALOG NUMBER

	NOMINAL LENGTH	TOTAL LAMPS		NOMINAL LENGTH	TOTAL LAMPS		NOMINAL LENGTH	TOTAL LAMPS		NOMINAL LENGTH	TOTAL LAMPS
IND500-2-4R	4'	2	IND500-2-4H	4'	2	IND500-3-4R	4'	3	IND500-3-4H	4'	3
IND500-2-6RT	6'	4	IND500-2-6H	6'	2	IND500-3-6RT	6'	6	IND500-3-6H	6'	3
IND500-2-8RT	8'	4	IND500-2-8H	8'	2	IND500-3-8RT	8'	6	IND500-3-8H	8'	3
IND500-2-4S	4'	2	IND500-2-4V	4'	2	IND500-3-4S	4'	3	IND500-3-16HT	16'	6
IND500-2-6S	6'	2	IND500-2-6V	6'	2	IND500-3-6S	6'	3	IND500-3-4V	4'	3
IND500-2-8S	8'	2	IND500-2-8V	8'	2	IND500-3-8S	8'	3	IND500-3-6V	6'	3
						IND500-3-16ST	16'	6	IND500-3-8V	8'	3
									IND500-3-16VT	16'	6

ORDERING GUIDE



NOTE: LAMP/WIRING*
 R = Medium Bi-Pin T8
 RT = Medium Bi-Pin T8, Tandem Wiring
 S = Slimline
 ST = Slimline, Tandem Wiring
 H = High Output (800MA)
 HT = High Output, Tandem Wiring
 V = Very High Output (1500MA)
 VT = Very High Output, Tandem Wiring

OPTIONS AND ACCESSORIES

- | | | |
|--|--|---|
| <ul style="list-style-type: none"> ● REFLECTOR OPTIONS SUFFIX
Specular Aluminum Reflector (95%) SR ● UP-LIGHT OPTIONS SUFFIX
10% Uplight S10
20% Uplight S20 ● OPTICAL OPTIONS SUFFIX
Lenses *
Louvers * | <ul style="list-style-type: none"> ● MECHANICAL OPTIONS SUFFIX
Reflector End Enclosures CE ● ELECTRICAL OPTIONS SUFFIX
Emergency Battery Pack BP*
External Line Fusing (HLR/GLR) ELF
Radio Interference Filters RIF
Plug-In Branch Wiring Connector System PIW*
Switch * | <ul style="list-style-type: none"> ● BALLAST OPTIONS SUFFIX
Electronic T8
Electronic Step Dimming T8 ESDM8* ● ACCESSORIES CAT. NO.
Wire Guard - 14 Ga. WG14-IND500
12" Coupling For Row Mounting CMC-200
Channel Hangers CH-500
4" Leg Height V-Hook V4
Fixture Suspension System * |
|--|--|---|

*See Appropriate Reference Page

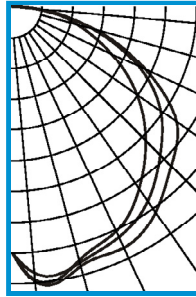
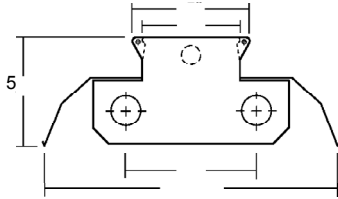
SPECIFICATIONS

- **TYPE** Industrial luminaire for surface or suspended mounting. Metal clad turret longitudinal push-pull lamp holders.
- **CONSTRUCTION** 22 ga. cold rolled steel housing. (20 ga. housing available as specified.) End plates are fastened to housing by sheet metal screws to assure rigidity.
- **FINISH** Baked white polyester finish, minimum reflectance 86%. (Powder coated finish available.)
- **REFLECTOR** 22 ga. cold rolled steel reflector standard.
- **WIRING** 120v 60Hz., 277v 60Hz., UNV (universal voltage 120v thru 277v.) or as otherwise specified.
- **LABELS** U.L. Listed. Suitable for damp locations.



PHOTOMETRIC DATA

IND500-2-4R-E8
TEST NO.=LA-T0545
LAMP TYPE=FO32T8
NO. OF LAMP=2
LUMENS PER LAMP=2900
WATTS PER LAMP=32
BALLAST FACTOR=1
PHOTOMETRY TYPE=C



CANDLEPOWER			
ANGLE	END	45	CROSS
0	1371	1371	1371
5	1532	1490	1543
15	1454	1470	1489
25	1376	1412	1478
35	1230	1315	1390
45	1046	1161	1248
55	841	1003	1111
65	601	768	809
75	371	455	471
85	150	145	94
90	26	19	7
95	5	7	1
105	2	3	0
115	0	1	0
125	0	1	0
135	0	0	0
145	0	0	0
155	0	0	0
165	0	0	0
175	0	0	0
180	0	0	0

ZONAL LUMEN SUMMARY			
DEGREES	LUMENS	% LAMP	% FIXTURE
0-30	1218	21.0	23.7
0-40	2042	35.2	39.7
0-60	3824	65.9	74.3
0-90	5132	88.5	99.8
90-120	12	0.2	0.2
90-150	12	0.2	0.2
90-180	12	0.2	0.2
0-180	5145	88.7	100.0

Lumen Output = 5145 lumens
Luminaire Efficiency = 88.7%

SPACING CRITERION	
ALONG	ACROSS
1.37	1.51

This space is intentionally left blank.

This space is intentionally left blank.

This space is intentionally left blank.

