



# INDUSTRIAL

## IND500 SERIES



# 13½" Wide Reflector Industrial Luminaire



- 13½" Wide Reflector Industrial Luminaire
- 2 or 3 Lamp / Turret Lampholders
- 22 Ga. Cold Rolled Steel Housing
- Baked White Polyester Finish
- Screw-On End Caps
- Reflector Secured by Quarter turn Fasteners
- Suitable for Damp Locations
- Available with:
  - Fluorescent, LED and LED T8 (Internally Driven)
  - Up-Light
  - 95% Enhanced Specular Aluminum Reflector
  - Emergency Battery Pack
  - Switch
  - 14 Ga. Wire Guard



Photometric Data and IES Files are Available on [www.lalighting.com](http://www.lalighting.com)



### LOS ANGELES LIGHTING MFG. CO.

10141 OLNEY ST. / EL MONTE, CA 91731

TEL : 626-454-8300 FAX : 626-454-8399

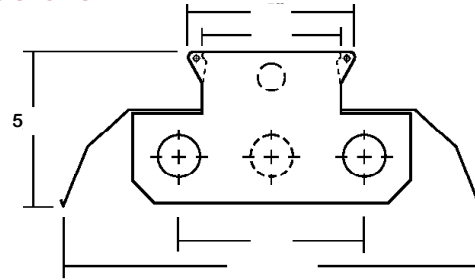
[www.lalighting.com](http://www.lalighting.com)

# INDUSTRIAL - LED T8 (Internally Driven)



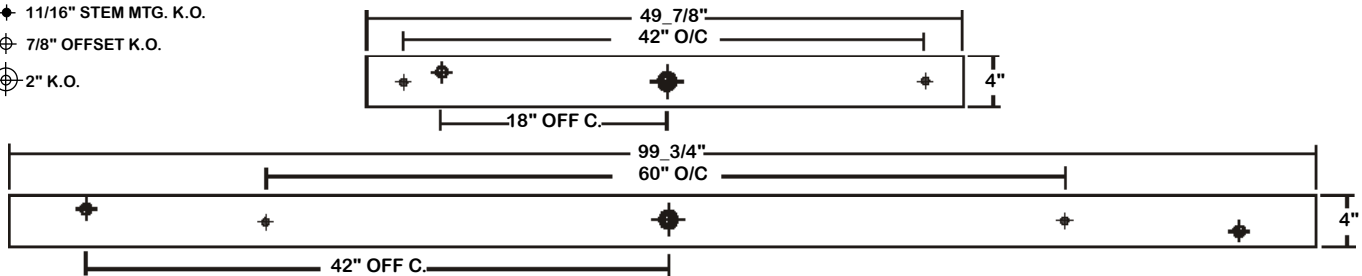
## IND500 SERIES 2 OR 3 LAMPS

### CROSS SECTION



### BACK PLATE

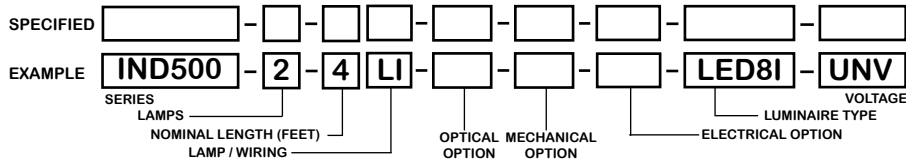
- ◆ 11/16" STEM MTG. K.O.
- ⊕ 7/8" OFFSET K.O.
- ⊕ 2" K.O.



### CATALOG NUMBER

CATALOG NUMBER	NOMINAL LENGTH	TOTAL MODULES
IND500-2-4Lx	4'	2
IND500-2-8LxT	8'	4
IND500-3-4Lx	4'	3
IND500-3-8LxT	8'	6

### ORDERING GUIDE



### TS2 - LED Luminaire On/Off Safety Switch



- Easily accessible on exterior of wire way.
- Allows individual fixture to be switched ON/OFF during re-lamping or Maintenance.
- Prevents damage to lamp and electrical shock during lamping and re-lamping.
- Allows safe entry to wire way channel where power connector can be disconnected for maintenance to fixture.

### LAMP / WIRING

**LI = LED T8 internal driver light tube.**  
Both ends powered.  
Shunted sockets used.



**LR = LED T8 internal driver light tube.**  
Single end powered.  
Non-shunted sockets used.



### OPTIONS AND ACCESSORIES

#### OPTICAL OPTIONS

- Lenses
- Louvers

SUFFIX

- \*
- \*

#### MECHANICAL OPTIONS

- Reflector End Enclosures

SUFFIX

- CE

#### ELECTRICAL OPTIONS

- LED Luminaire ON/OFF Safety Switch

SUFFIX

- TS2

#### ACCESSORIES

- Wire Guard - 14 Ga.
- 12" Coupling For Row Mounting
- Channel Hangers
- 4" Leg Height V-Hook
- Fixture Suspension System

CAT. NO.
WG14-IND500
CMC-200
CH-500
V4
*

\*See appropriate reference page

### SPECIFICATIONS

- TYPE
- CONSTRUCTION
- FINISH
- REFLECTOR
- WIRING
- LABELS

Industrial luminaire for surface or suspended mounting. Metal clad turret longitudinal push-pull lamp holders. 22 ga. cold rolled steel housing. (20 ga. housing available as specified.) End plates are fastened to housing by sheet metal screws to assure rigidity.  
Baked white polyester finish, minimum reflectance 86%. (Powder coated finish available.)  
22 ga. cold rolled steel reflector standard.  
Operate LED T8 internally driven light tube(s)\*\*.  
Suitable for damp locations.

\*\* Lamp(s) by others.

