



# INDUSTRIAL

## IND600 SERIES



### 16½" Wide Reflector Industrial Luminaire



- 16½" Wide Reflector Industrial Luminaire
- 4 Lamp / Turret Lampholders
- 22 Ga. Cold Rolled Steel Housing
- Baked White Polyester Finish
- Screw-On End Caps
- Reflector Secured by Quarter turn Fasteners
- Suitable for Damp Locations
- Available with:
  - Fluorescent, LED and LED T8 (Internally Driven)
  - Up-Light
  - 95% Enhanced Specular Aluminum Reflector
  - Emergency Battery Pack
  - Switch
  - 14 Ga. Wire Guard



Photometric Data and IES Files are Available on [www.lalighting.com](http://www.lalighting.com)



#### LOS ANGELES LIGHTING MFG. CO.

10141 OLNEY ST. / EL MONTE, CA 91731

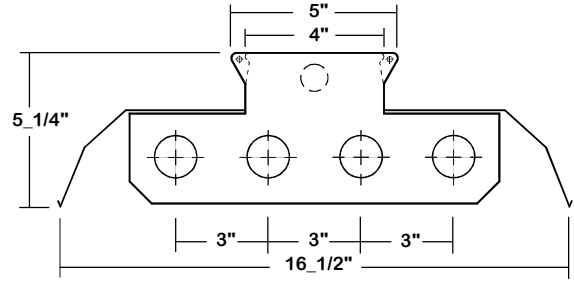
TEL : 626-454-8300 FAX : 626-454-8399

[www.lalighting.com](http://www.lalighting.com)



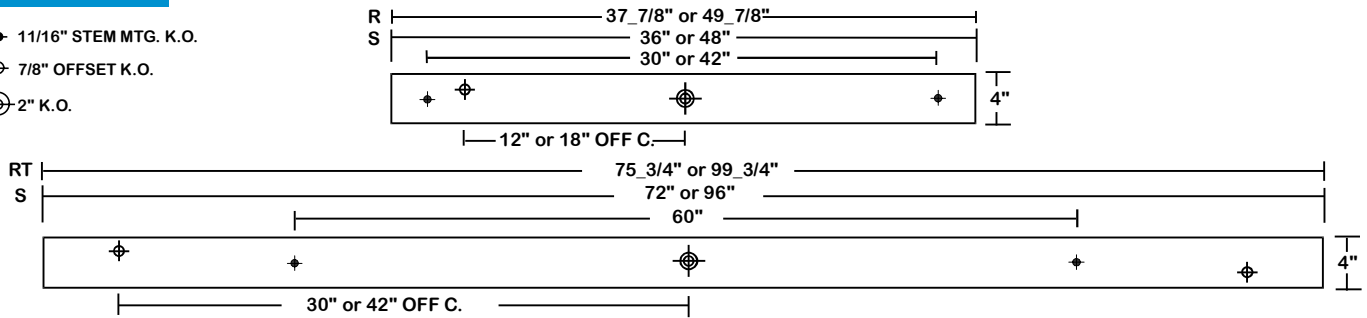
# IND600 SERIES

## CROSS SECTION



## BACK PLATE

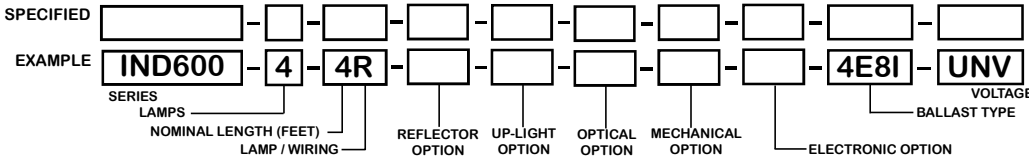
- ◆ 11/16" STEM MTG. K.O.
- ⊕ 7/8" OFFSET K.O.
- ⊕ 2" K.O.



## CATALOG NUMBER

CATALOG NUMBER	NOMINAL LENGTH	TOTAL LAMPS	CATALOG NUMBER	NOMINAL LENGTH	TOTAL LAMPS
IND600-4-3R	3'	4	IND600-4-4H	4'	4
IND600-4-4R	4'	4	IND600-4-6H	6'	4
IND600-4-6RT	6'	8	IND600-4-8H	8'	4
IND600-4-8RT	8'	8	IND600-4-4V	4'	4
IND600-4-4S	4'	4	IND600-4-6V	6'	4
IND600-4-6S	6'	4	IND600-4-8V	8'	4
IND600-4-8S	8'	4			

## ORDERING GUIDE



**NOTE: LAMP/WIRING\***  
 R = Medium Bi-Pin T8  
 RT = Medium Bi-Pin T8, Tandem Wiring  
 S = Slimline  
 H = High Output (800MA)  
 V = Very High Output (1500MA)

## OPTIONS AND ACCESSORIES

- **REFLECTOR OPTIONS**  
 Specular Aluminum Reflector (95%)    SUFFIX SR
- **UP-LIGHT OPTIONS**  
 10% Uplight    SUFFIX S10  
 20% Uplight    SUFFIX S20
- **OPTICAL OPTIONS**  
 Lenses    SUFFIX \*  
 Louvers    SUFFIX \*

- **MECHANICAL OPTIONS**  
 Reflector End Enclosures    SUFFIX CE
- **ELECTRICAL OPTIONS**  
 Emergency Battery Pack    SUFFIX BP\*  
 External Line Fusing (HLR/GLR)    SUFFIX ELF  
 Radio Interference Filters    SUFFIX RIF  
 Plug-In Branch Wiring Connector System    SUFFIX PIW\*  
 Switch    SUFFIX \*

- **BALLAST OPTIONS**  
 Electronic T8    SUFFIX E8\*  
 Electronic Step Dimming T8    SUFFIX ESDM8\*
- **ACCESSORIES**  
 Wire Guard - 14 Ga.    CAT. NO. WG14-IND600  
 12" Coupling For Row Mounting    CMC-200  
 Channel Hangers    CH-200  
 4" Leg Height V-Hook    V4  
 Fixture Suspension System    \*

\*See Appropriate Reference Page

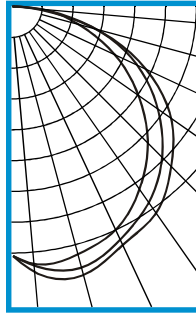
## SPECIFICATIONS

- **TYPE**    Industrial luminaire for surface or suspended mounting. Metal clad turret longitudinal push-pull lamp holders.
- **CONSTRUCTION**    22 ga. cold rolled steel housing. (20 ga. housing available as specified.) End plates are fastened to housing by sheet metal screws to assure rigidity.
- **FINISH**    Baked white polyester finish, minimum reflectance 86%. (Powder coated finish available.)
- **REFLECTOR**    22 ga. cold rolled steel reflector standard.
- **WIRING**    120v 60Hz., 277v 60Hz., UNV (universal voltage 120v thru 277v.) or as otherwise specified.
- **LABELS**    U.L. Listed. Suitable for damp locations.



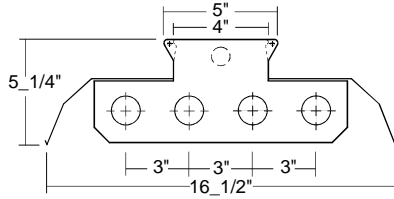
**PHOTOMETRIC DATA**

<b>IND600-4-4R-E8</b>
TEST NO.=LA-T0537
LAMP TYPE=FO32T8
NO. OF LAMP=4
LUMENS PER LAMP=2900
WATTS PER LAMP=32
BALLAST FACTOR=1
PHOTOMETRY TYPE=C



CANDLEPOWER			
ANGLE	END	45	CROSS
0	2709	2709	2809
5	2808	2829	2903
15	2777	2930	3011
25	2663	2779	2846
35	2402	2582	2722
45	2069	2291	2432
55	1654	1914	2092
65	1207	1477	1581
75	728	920	914
85	284	257	185
90	31	22	8
95	9	8	1
105	2	4	0
115	0	1	0
125	0	1	0
135	0	0	0
145	0	0	0
155	0	0	0
165	0	0	0
175	0	0	0
180	0	0	0

ZONAL LUMEN SUMMARY			
DEGREES	LUMENS	% LAMP	% FIXTURE
0-30	2377	20.5	23.7
0-40	3992	34.4	39.9
0-60	7449	64.2	74.4
0-90	10001	86.2	99.9
90-120	14	0.1	0.1
90-150	15	0.1	0.1
90-180	15	0.1	0.1
0-180	10016	86.3	100.0



Lumen Output = 10016 lumens  
Luminaire Efficiency = 86.3%

SPACING CRITERION	
ALONG	ACROSS
1.36	1.51

This space is intentionally left blank.

This space is intentionally left blank.

This space is intentionally left blank.

