



INDUSTRIAL

KDI100 SERIES



Knocked Down One-Light Industrial



- Knocked Down One-Light Industrial Luminaire
- 22 Ga. Cold Rolled Steel Housing
- Baked White Polyester Finish
- Screw-On End Caps
- End Plates May be Used as Channel Couplings
- 22 Ga. Cold Rolled Steel Reflector
- Reflector Secured by Two Quarter Turn Fasteners
- Suitable for Damp Locations
- Available with:
 - Fluorescent and LED Tube (Internally Driven)
 - 14 Ga. Wire Guard
 - 4" Leg Height V-Hook



Photometric Data and IES Files are Available on www.lalighting.com



LOS ANGELES LIGHTING MFG. CO.

10141 OLNEY ST. / EL MONTE, CA 91731

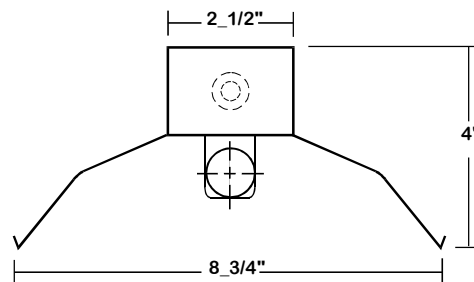
TEL : 626-454-8300 FAX : 626-454-8399

www.lalighting.com



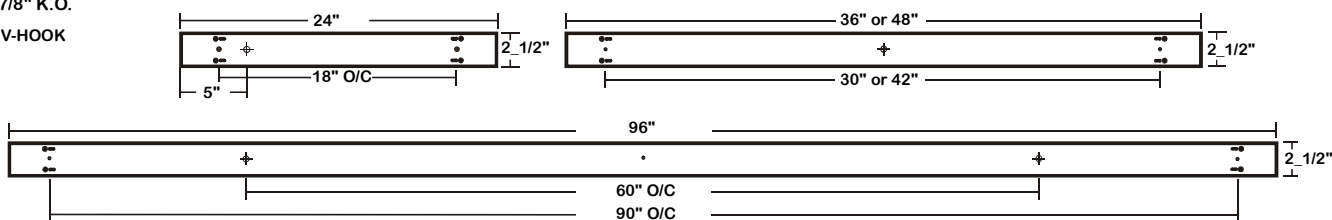
KDI100 SERIES

CROSS SECTION



BACK PLATE

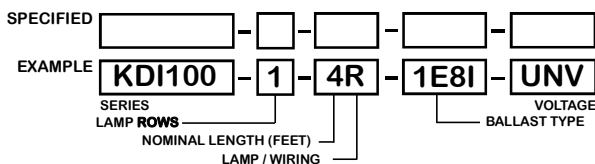
- 3/16" MTG. HOLE
- ⌀ 7/8" K.O.
- V-HOOK



CATALOG NUMBER

CATALOG NUMBER	NOMINAL LENGTH	TOTAL LAMPS	LAMP TYPE
KDI100-1-2R-1E8I-UNV	2'	1	T8
KDI100-1-3R-1E8I-UNV	3'	1	T8
KDI100-1-4R-1E8I-UNV	4'	1	T8
KDI100-1-8RT-2E8I-UNV	8'	2	T8

ORDERING GUIDE



Note: For additional options not available on Knocked Down fixtures, contact Customer Service

AVAILABLE ACCESSORIES

ACCESSORIES	CAT. NO.
Wire Guard - 14 Ga.	WG14-KDI100
4" Leg Height V-Hook	V4

SPECIFICATIONS

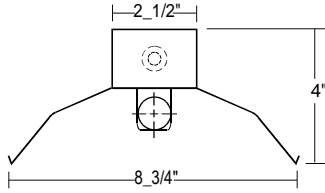
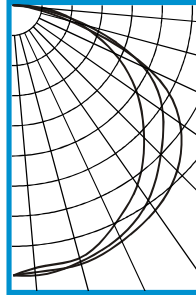
● TYPE	Knocked down one-light industrial.
● CONSTRUCTION	22 ga. cold rolled steel housing. End plates are fastened to housing by sheet metal screws to assure rigidity. End plates may be used as channel couplings.
● FINISH	Bakes white polyester finish standard, minimum reflectance 86%
● REFLECTOR	22 ga. cold rolled steel reflector.
● WIRE GUARDS	Chrome epoxy powder coated.
● WIRING	UNV (universal voltage 120v thru 277v.) ballasts as available, or as otherwise specified.
● LABELS	U.L. Listed. Suitable for damp locations.



PHOTOMETRIC DATA

KDI100-1-4R-E8

TEST NO.=LA-T0280-1
 LAMP TYPE=FO32T8
 NO. OF LAMP1
 LUMENS PER LAMP=2900
 WATTS PER LAMP=32
 BALLAST FACTOR=1
 PHOTOMETRY TYPE=C



CANDLEPOWER

ANGLE	END	45	CROSS
0	757	757	757
5	738	760	751
15	732	743	750
25	676	714	727
35	610	663	698
45	519	586	651
55	422	511	570
65	311	400	418
75	190	211	154
85	84	48	27
90	24	12	2
95	7	5	0
105	2	2	0
115	1	1	0
125	0	0	0
135	0	0	0
145	0	0	0
155	0	0	0
165	0	0	0
175	0	0	0
180	0	0	0

ZONAL LUMEN SUMMARY

DEGREES	LUMENS	% LAMP	% FIXTURE
0-30	610	21.0	23.8
0-40	1023	35.3	39.9
0-60	1929	66.5	75.2
0-90	2566	88.1	99.6
90-120	9	0.3	0.4
90-150	9	0.3	0.4
90-180	9	0.3	0.4
0-180	2566	88.5	100.0

Lumen Output = 2566 lumens
 Luminaire Efficiency = 88.5%

SPACING CRITERION

ALONG	ACROSS
1.26	1.41

This space is intentionally left blank.

This space is intentionally left blank.

This space is intentionally left blank.

