



# INDUSTRIAL

## KDI200 SERIES



### Knocked Down Two-Light Industrial



- Knock Down Two-Light Industrial, Individual Pack
- 22 Ga. Cold Rolled Steel Housing
- Baked White Polyester Finish
- Screw-On End Caps
- 24Ga. Cold Rolled Steel Reflector
- Reflector Secured by Two Quarter Turn Fasteners
- Suitable for Damp Locations
- Available with:
  - Fluorescent and LED Tube (Internally Driven)
  - 14 Ga. Wire Guard
  - 12" Coupling For Row Mounting
  - 4" Leg Height V-Hook



Photometric Data and IES Files are Available on [www.lalighting.com](http://www.lalighting.com)



**LOS ANGELES LIGHTING MFG. CO.**

10141 OLNEY ST. / EL MONTE, CA 91731

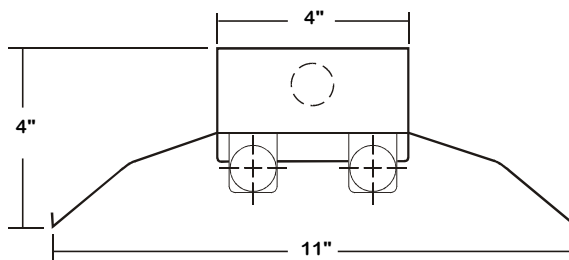
TEL : 626-454-8300 FAX : 626-454-8399

[www.lalighting.com](http://www.lalighting.com)



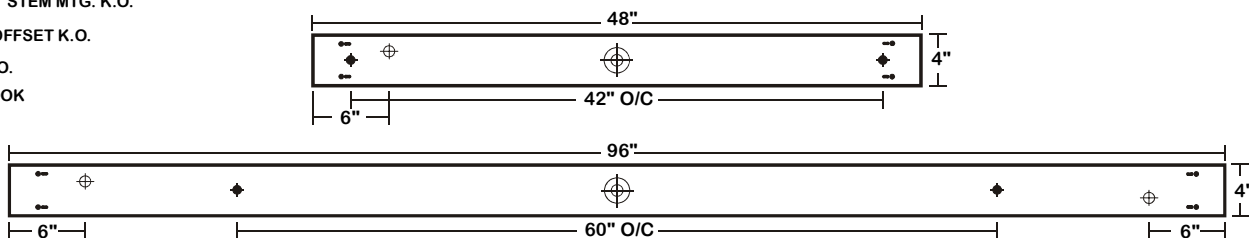
# KDI200 SERIES

## CROSS SECTION



## BACK PLATE

- ◆ 11/16" STEM MTG. K.O.
- ⊕ 7/8" OFFSET K.O.
- ⊕ 2" K.O.
- V-HOOK

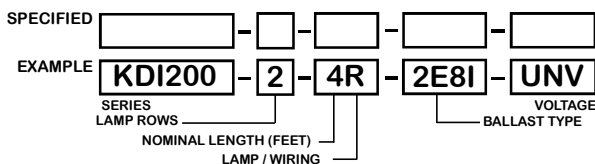


## CATALOG NUMBER

	NOMINAL LENGTH	TOTAL LAMPS	LAMP TYPE		NOMINAL LENGTH	TOTAL LAMPS	LAMP TYPE	
KDI200-2-4R-2E8I-UNV	4'	2	T8		KDI200-2-8S-2E8I-UNV	8'	2	T8
KDI200-2-4R-BP5-2E8I-UNV	4'	2	T8		KDI200-2-4M-2E5H-UNV	4'	2	T5HO
KDI200-2-8RT-4E8I-UNV	8'	4	T8		KDI200-2-8MT-4E5H-UNV	8'	4	T5HO
KDI200-2-8RT-BP5-4E8I-UNV	8'	4	T8					

• BP5 - 1400 Lumen Emergency Ballast

## ORDERING GUIDE



Note: For additional options not available on Knocked Down fixtures, contact Customer Service

## AVAILABLE ACCESSORIES

ACCESSORIES	CAT. NO.
Wire Guard - 14 Ga.	WG14-KDI200
12" Coupling For Row Mounting	CMC-KDI200
4" Leg Height V-Hook	V4

## SPECIFICATIONS

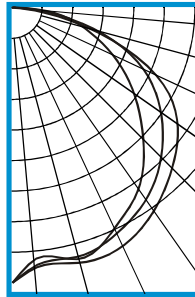
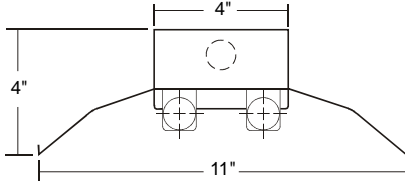
● TYPE	Knocked down two-light industrial.
● CONSTRUCTION	22 ga. cold rolled steel housing. End plates are fastened to housing by sheet metal screws to assure rigidity.
● FINISH	Bakes white polyester finish standard, minimum reflectance 86%.
● REFLECTOR	24 ga. cold rolled steel reflector.
● WIRE GUARDS	Chrome epoxy powder coated.
● WIRING	UNV (universal voltage 120v thru 277v.) ballasts as available, or as otherwise specified.
● LABELS	U.L. Listed. Suitable for damp locations.



**PHOTOMETRIC DATA**

**KDI200-2-4R-E8**

TEST NO.=LA-T0281-1  
 LAMP TYPE=FO32T8  
 NO. OF LAMP=2  
 LUMENS PER LAMP=2900  
 WATTS PER LAMP=32  
 BALLAST FACTOR=1  
 PHOTOMETRY TYPE=C



**CANDLEPOWER**

ANGLE	END	45	CROSS
0	1487	1487	1487
5	1367	1401	1412
15	1406	1392	1427
25	1312	1343	1419
35	1191	1262	1336
45	999	1137	1222
55	800	979	1089
65	595	778	853
75	389	470	429
85	174	124	67
90	37	19	3
95	16	12	0
105	5	4	0
115	1	1	0
125	1	0	0
135	0	0	0
145	0	0	0
155	0	0	0
165	0	0	0
175	0	0	0
180	0	0	0

**ZONAL LUMEN SUMMARY**

DEGREES	LUMENS	% LAMP	% FIXTURE
0-30	1158	20.0	23.1
0-40	1952	33.6	38.9
0-60	3685	63.5	73.4
0-90	5000	86.2	99.6
90-120	18	0.3	0.4
90-150	18	0.3	0.4
90-180	18	0.3	0.4
0-180	5019	86.5	100.0

Lumen Output = 5019 lumens  
 Luminaire Efficiency = 86.5%

**SPACING CRITERION**

ALONG	ACROSS
1.25	1.38

This space is intentionally left blank.

This space is intentionally left blank.

This space is intentionally left blank.

