

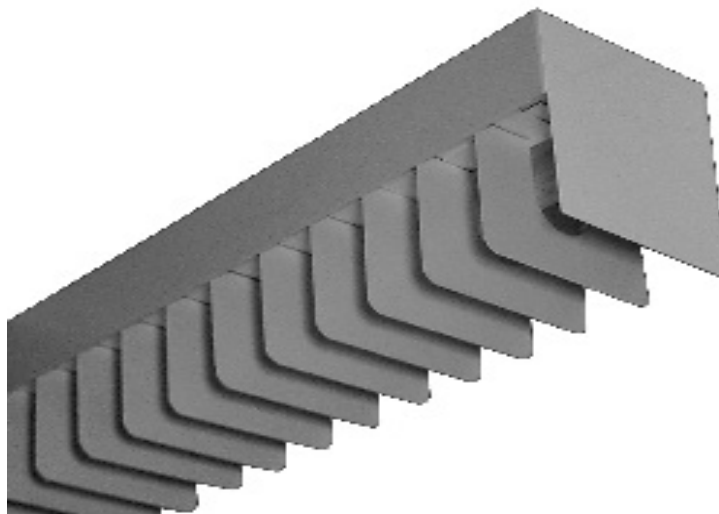


WRAPAROUND

LST100 SERIES



Rectangular Baffled Luminaire



- Rectangular Baffled Luminaire
- Powder Coated Finish / Painted After Fabrication
- Row, Surface or Pendant Mountable
- Suitable for Damp Locations
- Available with:
 - Fluorescent, LED and LED T8 (Internally Driven)
 - Emergency Battery Pack



Photometric Data and IES Files are Available on www.lalighting.com

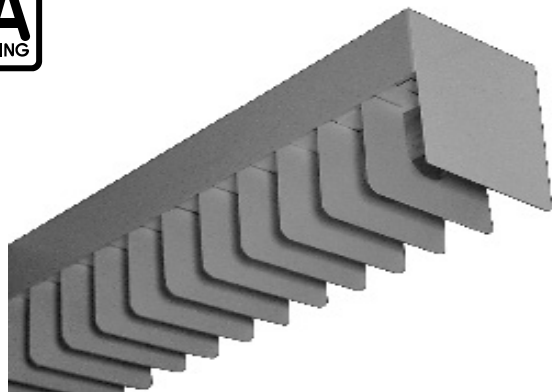


LOS ANGELES LIGHTING MFG. CO.

10141 OLNEY ST. / EL MONTE, CA 91731

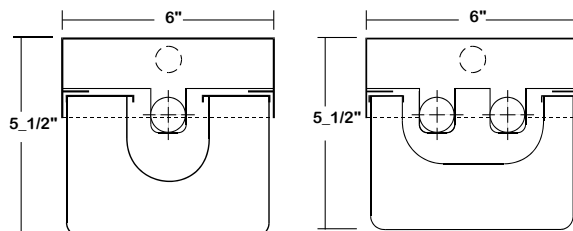
TEL : 626-454-8300 FAX : 626-454-8399

www.lalighting.com



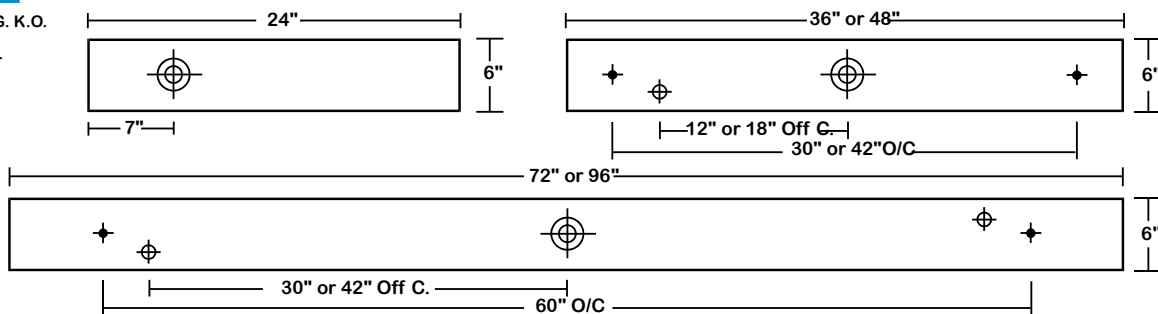
LST100 SERIES

CROSS SECTION



BACK PLATE

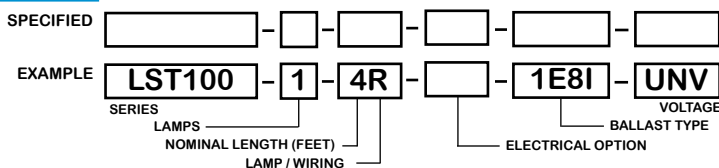
- ◆ 11/16" STEM MTG. K.O.
- ⊕ 7/8" OFFSET K.O.
- ⊕ 2" K.O.



CATALOG NUMBER

NOMINAL LENGTH	TOTAL LAMPS	NOMINAL LENGTH	TOTAL LAMPS	NOMINAL LENGTH	TOTAL LAMPS	NOMINAL LENGTH	TOTAL LAMPS	
LST100-1-2M	2'	1	LST100-2-2M	2'	2	LST100-1-2R	2'	1
LST100-1-3M	3'	1	LST100-2-3M	3'	2	LST100-1-3R	3'	1
LST100-1-4M	4'	1	LST100-2-4M	4'	2	LST100-1-4R	4'	1
LST100-1-6MT	6'	2	LST100-2-6MT	6'	4	LST100-1-6RT	6'	2
LST100-1-8MT	8'	2	LST100-2-8MT	8'	4	LST100-1-8RT	8'	2
						LST100-2-2R	2'	2
						LST100-2-3R	3'	2
						LST100-2-4R	4'	2
						LST100-2-6RT	6'	4
						LST100-2-8RT	8'	4

ORDERING GUIDE



NOTE: LAMP/WIR-
M= Miniature Bi-Pin T5
MT= Miniature Bi-Pin T5 Tandem Wiring
R= Medium Bi-Pin T8
RT= Medium Bi-Pin T8 Tandem Wiring

OPTIONS AND ACCESSORIES

- **ELECTRICAL OPTIONS**
- Emergency Battery Pack
- External Line Fusing (HLR/GLR)
- Radio Interference Filters

- SUFFIX
- BP*
 - ELF
 - RIF

- **BALLAST OPTIONS**
- Electronic T5
- Electronic T5HO
- Electronic Step Dimming T5HO
- Electronic T8
- Electronic Step Dimming T8

- SUFFIX
- E5*
 - E5H
 - ESDM5H
 - E8*
 - ESDM8*

- **ACCESSORIES**
- Fixture Suspension System

CAT.NO.
*

*See Appropriate Reference Page

SPECIFICATIONS

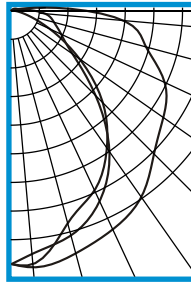
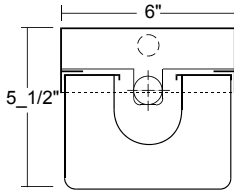
- **TYPE** Baffled luminaire for use in lighting long narrow corridors, aisles, and libraries.
- **CONSTRUCTION** 22 ga. cold rolled steel welded housing.
- **FINISH** Baked white powder coated finish, minimum reflectance 90%. Painted after fabrication.
- **OPTICS** Employing longitudinal shielding only, this stacklite qualifies as an efficient unit for lighting long narrow area.
- **WIRING** 120v 60Hz., 277v 60Hz., UNV (universal voltage 120v thru 277v.) or as otherwise specified.
- **LABELS** U.L. Listed. Suitable for damp locations.



PHOTOMETRIC DATA

LST100-1-4R-E8

TEST NO.=LA-T0425
 LAMP TYPE=FO32T8
 NO. OF LAMP=1
 LUMENS PER LAMP=2900
 WATTS PER LAMP=32
 BALLAST FACTOR=1
 PHOTOMETRY TYPE=C



CANDLEPOWER

ANGLE	END	45	CROSS
0	593	593	593
5	595	571	603
15	513	543	587
25	462	490	563
35	389	399	531
45	301	276	472
55	192	173	434
65	95	128	395
75	36	103	325
85	10	79	262
90	4	53	174
95	3	30	82
105	4	15	10
115	3	11	5
125	2	8	4
135	1	5	2
145	1	3	2
155	0	1	0
165	0	0	0
175	0	0	0
180	0	0	0

ZONAL LUMEN SUMMARY

DEGREES	LUMENS	% LAMP	% FIXTURE
0-30	443	15.3	26.0
0-40	713	24.6	41.8
0-60	1187	40.9	69.6
0-90	1629	56.2	95.5
90-120	68	2.3	4.0
90-150	77	2.6	4.5
90-180	77	2.7	4.5
0-180	1706	58.8	100.0

Lumen Output = 1706 lumens
 Luminaire Efficiency = 58.8%

SPACING CRITERION

ALONG	ACROSS
1.08	1.38

This space is intentionally left blank.

This space is intentionally left blank.

This space is intentionally left blank.

