



# BAYLIGHTER®

## MBL229 SERIES

### Medium / High Bay Luminaire



- Medium / High Bay Compact Fluorescent Luminaire
- High Impact / Vandal Resistant
- 40W, 50W, 55W Biax Lamp
- Powder Coated Finish / Painted After Fabrication
- Full Length Piano Hinge & Captive Screws
- Up To 6 Levels Switching
- Suitable for Damp Locations
- Available with:
  - 95% Enhanced Specular Aluminum Reflectors
  - Variety of Lenses
  - Tamper Proof Screws
  - Emergency Battery Pack
  - Sensor



Photometric Data and IES Files are Available on [www.lalighting.com](http://www.lalighting.com)



**LOS ANGELES LIGHTING MFG. CO.**

10141 OLNEY ST. / EL MONTE, CA 91731

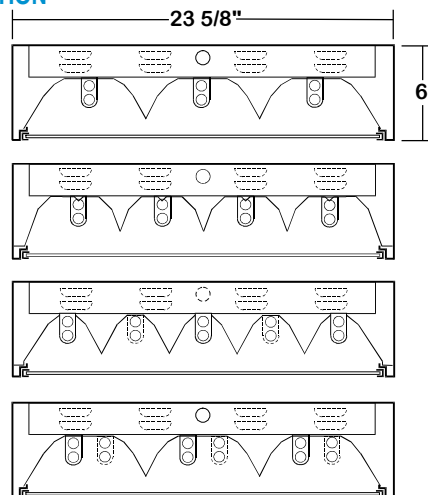
TEL : 626-454-8300 FAX : 626-454-8399

[www.lalighting.com](http://www.lalighting.com)



# MBL229 SERIES

## CROSS SECTION

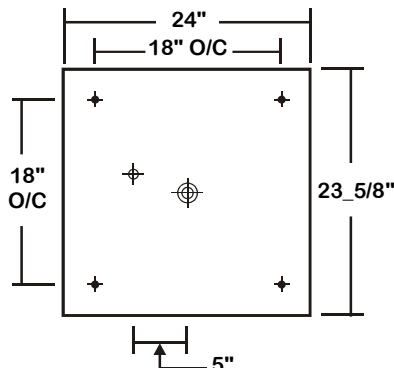


## CATALOG NUMBER

CATALOG NUMBER	NOMINAL WIDTH X LENGTH	TOTAL LAMPS
MBL229-3-2B	2' X 2'	3
MBL229-4-2B	2' X 2'	4
MBL229-5-2B	2' X 2'	5
MBL229-6-2B	2' X 2'	6

## BACK PLATE

- + 11/16" STEM MTG. K.O.
- ⊕ 2" K.O.
- ⊖ 7/8" OFFSET K.O.



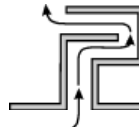
## DOOR FRAME INFORMATION

### ● CROSS SECTION



### ● AIR SLOT

Formed air slot, allows air circulation for heat removal.



### ● EXPLANATION

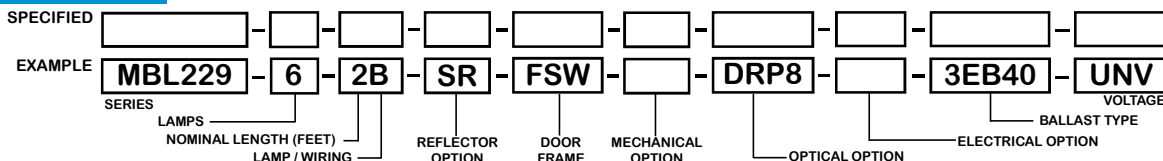
1. Continuous Piano Hinge.
2. Two Captive Screws.
3. Welded Inner Frame Lens Retainer Rail.

**FS W**

**FINISHES**  
W - White Enamel  
B - Black Enamel

**STYLES**  
FS - Flat Steel

## ORDERING GUIDE



**NOTE: LAMP/WIRING\*** B= Compact Twin Tube

## OPTIONS AND ACCESSORIES

### ● REFLECTOR OPTIONS

- Specular Aluminum Reflector (95%)
- White Aluminum Reflector (90%)

### SUFFIX

- SR
- WR

### ● OPTICAL OPTIONS

- High Impact Clear Prismatic Acrylic .125
- High Impact Clear Prismatic Acrylic .187

### SUFFIX

- DRP2
- DRP8

\* Other Lens Available Upon Request

### ● MECHANICAL OPTIONS

- Tamper Proof Screws (Hex Socket With Post)

### SUFFIX

- TP

### ● ELECTRICAL OPTIONS

- Emergency Battery Pack
- External Line Fusing (HLR/GLR)
- Radio Interference Filters
- Motion Sensor

### SUFFIX

- BP\*
- ELF
- RIF
- MS

### ● BALLAST OPTIONS

- Electronic 40W Compact Twin Tube
- Electronic 50W Compact Twin Tube
- Electronic 55W Compact Twin Tube

### SUFFIX

- EB40
- EB50
- EB55

### ● ACCESSORIED

- Ceiling Spacers

### CAT. NO.

\*

\*See appropriate reference page

## SPECIFICATIONS

### ● TYPE

Surface mounted, low bay / high bay general area luminaire, for use in high impact / vandal resistant applications. 5-lamp and 6-lamp fixtures with 50w or 55w lamps and ballasts must be spaced a minimum of 1 1/2" from ceiling when surface mounted.

### ● CONSTRUCTION

20 gauge cold rolled steel housing. Welded construction with louvered vents on each side for heat removal.

### ● FINISH

Baked white powder coated finish, minimum reflectance 90%, painted after fabrication.

### ● REFLECTOR

Enhanced aluminum reflectors, 95% reflectance.

### ● DOOR FRAME

20 gauge cold rolled steel, continuous piano hinge and 2 captive screws, inner frame lens retainer rail.

### ● OPTICS

Available with various high impact acrylic or polycarbonate lenses.

### ● WIRING

120v 60Hz., 277v 60Hz., UNV (universal voltage 120v thru 277v.) or as otherwise specified.

### ● LABELS

Up to 6 levels of switching available as specified.

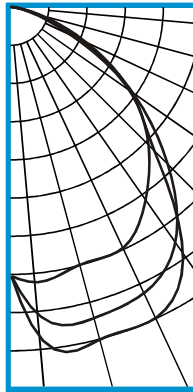
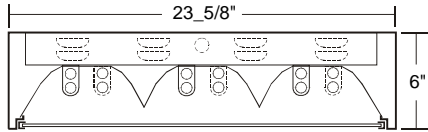
U.L. or ETL Listed. Suitable for damp locations.



**PHOTOMETRIC DATA**

**MBL229-6-2B-SR-FSW-CA2-EB40**

TEST NO.=LA-T0297  
 LAMP TYPE=F40BX  
 NO. OF LAMP=6  
 LUMENS PER LAMP=3150  
 WATTS PER LAMP=40  
 BALLAST FACTOR=1  
 PHOTOMETRY TYPE=C



**CANDLEPOWER**

ANGLE	END	45	CROSS
0	4497	4497	4497
5	4615	5159	5547
15	4452	5374	5743
25	1132	5263	5723
35	3910	4776	4989
45	3234	3683	3365
55	2414	2451	2390
65	1358	1274	1065
75	485	384	319
85	56	41	36
90	0	1	0
95	0	0	0
105	0	0	0
115	0	0	0
125	0	0	0
135	0	0	0
145	0	0	0
155	0	0	0
165	0	0	0
175	0	0	0
180	0	0	0

**ZONAL LUMEN SUMMARY**

DEGREES	LUMENS	% LAMP	% FIXTURE
0-30	4362	23.1	31.6
0-40	7260	38.4	52.5
0-60	12141	64.2	87.8
0-90	13826	73.2	100.0
90-120	0	0.0	0
90-150	0	0.0	0
90-180	0	0.0	0
0-180	13826	73.2	100.0

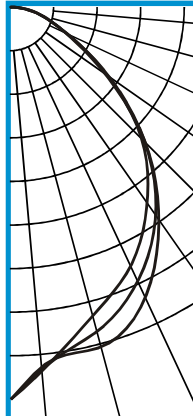
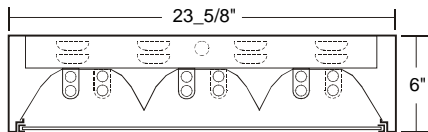
Lumen Output = 13826 lumens  
 Luminaire Efficiency = 73.2%

**SPACING CRITERION**

ALONG	ACROSS
1.35	1.54

**MBL229-6-2B-SR-FSW-PA2-EB40**

TEST NO.=LA-T0298  
 LAMP TYPE=F40BX  
 NO. OF LAMP=6  
 LUMENS PER LAMP=3150  
 WATTS PER LAMP=40  
 BALLAST FACTOR=1  
 PHOTOMETRY TYPE=C



**CANDLEPOWER**

ANGLE	END	45	CROSS
0	5861	5861	5861
5	5446	5427	5388
15	4765	5010	5252
25	4252	4502	4768
35	3551	3773	3852
45	2754	2821	2823
55	1741	1764	1693
65	911	908	888
75	472	468	468
85	146	143	140
90	13	9	14
95	0	0	0
105	0	0	0
115	0	0	0
125	0	0	0
135	0	0	0
145	0	0	0
155	0	0	0
165	0	0	0
175	0	0	0
180	0	0	0

**ZONAL LUMEN SUMMARY**

DEGREES	LUMENS	% LAMP	% FIXTURE
0-30	4026	21.3	34.6
0-40	6373	33.7	54.8
0-60	10107	53.5	87.0
0-90	11620	61.5	100.0
90-120	3	0.0	0
90-150	3	0.0	0
90-180	3	0.0	0
0-180	11623	61.5	100.0

Lumen Output = 11623 lumens  
 Luminaire Efficiency = 61.5%

**SPACING CRITERION**

ALONG	ACROSS
1.35	1.54

This space is intentionally left blank.

This space is intentionally left blank.

