



BAYLIGHTER™ LED

MBL229 (2X2) SERIES

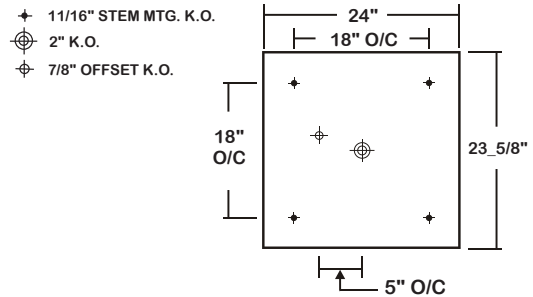
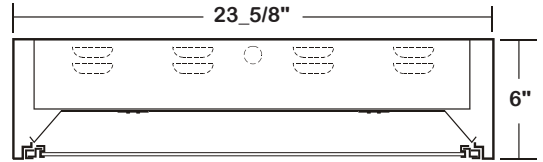
HIGH IMPACT HIGH BAY LUMINAIRE

DATE	
JOB	

WWW.LALIGHTING.COM
626-454-8300

SURFACE / SUSPENSION MOUNTED HIGH IMPACT HIGH BAY LED LUMINAIRE

DIMENSIONS



APPLICATIONS

- Commercial, High Impact Areas, Vandal Resistant Areas

FEATURES

- **High (HT)** ambient temperature version for extreme temperature ranges (See *SYSTEM DATA* for ranges)
- 0-10V dimming driver standard (See *DRIVER OPTIONS* for other dimming types)
- Supports California Title 24 compliance
- Safety cables attached to door frame and LED gear tray
- Formed air slot that allows air circulation for heat removal

OPTIONS

- Full customization available upon request
- Additional lumen packages and color temperatures available
- Controls and sensors available (See *SENSOR OPTIONS* for controls and sensors)
- Wireless control options available (See *SENSOR OPTIONS* for wireless controls)
- Custom colors available (See *CUSTOM COLORS* for standard and custom options)
- Variety of lenses available (See *OPTICAL OPTIONS* for lenses)
- Emergency battery pack available (See *BATTERY PACK OPTIONS* for battery pack options)
- Cable suspension systems available (See *ACCESSORIES* for details)
- Tamper proof screws (hex with post) available

SPECIFICATIONS

CONSTRUCTION

- 20 ga. cold rolled steel housing with louvered vents for heat removal
- 20 ga. cold rolled steel door frame secured by full length piano hinge and 2 captive screws
- One way polyurethane gasket standard

FINISH

- Baked white powder coated finish / painted after fabrication / minimum reflectance 90%

OPTICAL

- High impact clear prismatic acrylic lens (nominal 0.187) standard
- Inner frame lens retainer rail

ELECTRICAL

- High efficiency drivers coupled with long-life LEDs
- Service life greater than 50,000 hours (L70)
- Universal voltage 120V through 277V (347V / 480V available)
- Power Factor (PF) ≥ 0.9
- Total Harmonic Distortion (THD) $\leq 20\%$

LISTING

- UL USA and Canada listed / suitable for damp locations

WARRANTY

- 5-year limited warranty



Los Angeles Lighting Mfg. Co.

Contact Us
T: 626-454-8300 10141 Olney Street
F: 626-454-8399 El Monte, CA 91731
www.lalighting.com Made in the USA



Due to continued product improvements and enhancements, Los Angeles Lighting Manufacturing Company reserves the right to alter specifications, dimensions, data, and/or materials without notice. Please visit our website to view the most current information.

© 2022 LOS ANGELES LIGHTING MANUFACTURING CO. ALL RIGHTS RESERVED.

Revised: 07/27/19



MADE IN THE USA
BAA Compliant

ORDERING INFORMATION

EXAMPLE: MBL229-16-2L-FSW-DRP8-BPL1.5-DRDM-UNV-2/850HT

SERIES	LED LUMEN PACKAGE	NOMINAL LENGTH	DOOR FRAME	OPTICAL	MECHANICAL	ELECTRICAL	DRIVER	VOLTAGE	# OF LED ROW	CRI / CCT	AMBIENT TEMP.
MBL229		2L	FSW				DRDM	UNV	2		HT
MBL229 High Impact High Bay LED Luminaire (HT - High Ambient Temperature Version)	8 Nom. 8000 Lumens 12 Nom. 12000 Lumens 16 Nom. 16000 Lumens *Additional Lumen Packages Available	2L 2' x 2'	FSW Flat Steel White Enamel Door Frame See <u>DOOR FRAME for Options</u>	DRP8 High Impact Clear Prismatic Acrylic 0.187 DRP2 High Impact Clear Prismatic Acrylic 0.125 See <u>OPTICAL OPTIONS for Options</u>	TP Tamper Proof Screws (Hex with Post) *Leave Blank if Not Specified	BPL1.5 Emergency Battery Pack, Nom. 1500 Im See <u>BATTERY PACK OPTIONS for Options</u> MSxx Motion Sensor WLC(LED RU) Wireless Control See <u>SENSOR OPTIONS for Options</u> *Leave Blank if Not Specified Additional <u>Electrical Options</u>	DRDM 0-10V Dimming Driver See <u>DRIVER OPTIONS for Options</u>	UNV 120V-277V See <u>DRIVER OPTIONS for Options</u>	2 Two LED Rows	835 80+CRI / 3500K Color Temp. 840 80+CRI / 4000K Color Temp. 850 80+CRI / 5000K Color Temp. *Additional Color Temp. Available	HT High Ambient Temp.

SYSTEM DATA

THESE ARE THE MOST POPULAR LUMEN PACKAGES. PLEASE CONSULT FACTORY FOR ADDITIONAL SYSTEM DATA.

NOMINAL SIZE	LED LUMEN PACKAGE	CRI / CCT	AMBIENT TEMP.	OPTICAL	DELIVERED LUMENS	SYSTEM WATTS	LUMINAIRE EFFICACY	FLUORESCENT / HID / CFL EQUIVALENT	IES FILES
2' x 2'	8000 lm	850	HT	DRP8	4376 lm	22.0 W	198.6 lm/W	4-F24T5HO, 175 W (MH), 4-BX40	LA-T3144-2
	12000 lm		HT	DRP8	9794 lm	76.1 W	128.6 lm/W	6-F24T5HO, 250 W (MH), 4-BX55	LA-T3145-2
	16000 lm		HT	DRP8	12887 lm	103.3 W	124.7 lm/W	8-F24T5HO, 400 W (MH), 8-BX40	LA-T3146-2

NOTE:

System data above is based on 120V input voltage.
 Actual performance may differ as a result of end-user environment and application.
 HT: High Ambient Operating Temperature Minimum -30°C / Maximum (please consult factory)

Additional lumen packages and color temperatures available.

PERFORMANCE DATA

[VIEW PHOTOMETRICS](#)



Los Angeles Lighting Mfg. Co.

Contact Us
 T: 626-454-8300 10141 Olney Street
 F: 626-454-8399 El Monte, CA 91731
 www.lalighting.com Made in the USA



Due to continued product improvements and enhancements, Los Angeles Lighting Manufacturing Company reserves the right to alter specifications, dimensions, data, and/or materials without notice.
 Please visit our website to view the most current information.

© 2022 LOS ANGELES LIGHTING MANUFACTURING CO. ALL RIGHTS RESERVED.

Revised: 07/27/19



MADE IN THE USA
 BAA Compliant

SENSOR OPTIONS

DRY AND DAMP LOCATIONS - HIGH / LOW AISLE MOUNTING APPLICATIONS - END MOUNT

MS - Motion Sensor

- Turns light ON/OFF based on motion detection
- Fixture mounting height 8-45'
- Universal Voltage (120V-277V)
- 480V available

MSSD - Motion Sensor – Step Dimming

- Step-dims light to desired preset level (based on motion detection)
- Used in conjunction with 0-10V Ballast/Driver
- Fixture mounting height 8-45'
- Universal Voltage (120V-277V)

MSPC - Motion Sensor & Photocell

- Holds lights OFF when sufficient daylight is present regardless of motion detection
- Fixture mounting height 8-45'
- Universal Voltage (120V-277V)

MSPCD(ADC) - Motion Sensor & PhotoCell Dimming (Auto Dim Control)

- Variably dims output to desired preset footcandle level through photocell ON/OFF with motion detection
- Used in conjunction with 0-10V Ballast/Driver
- Fixture mounting height 8-45'
- Universal Voltage (120V-277V)

MSPCD(ANL) - Motion Sensor & Photocell Dimming (Auto Night Light)

- Variably dims output to desired footcandles through photocell
- Low setting when unoccupied (full on with motion)
- For 24 hour use
- Used in conjunction with 0-10V Ballast/Driver
- Fixture mounting height 8-45'
- Universal Voltage (120V-277V)

MSPCDR - Motion Sensor & Photocell Dimming (Setup with Remote Control)

- Field adjustable dimming sensor capabilities:
 - Step Dim (HIGH/LOW output)
 - Auto Dim Control (dim to desired footcandles, ON/OFF with motion)
 - Auto Night Light (dim to desired footcandles, LOW without motion)
- Used in conjunction with 0-10V dimming Ballast /Driver
- Holds lights OFF when sufficient daylight is present regardless of motion detection
- Adjustable ramp up and fade down time
- Fixture mounting height 8-40'
- Universal Voltage (120V-277V)
- Remote setup and adjustment with handheld wireless tool (sold separately)

PCS - Photocell Sensor

- Turns light ON/OFF based on light levels
- Fixture mounting height 8-45'
- Universal Voltage (120V-277V)

PCD - Photocell Dimming

- Dims output to desired footcandles through photocell
- Used in conjunction with 0-10V Ballast/Driver
- Fixture mounting height 8-45'
- Universal Voltage (120V-277V)

HIGH FREQUENCY - INTERNAL FIXTURE MOUNT

MSHPC - Motion Sensor High Frequency (Microwave) & Photocell

- Super high frequency motion sensor (also known as microwave sensor) which detects movement when installed behind low density fixture materials, such as polycarbonate, acrylic and glass diffusers
- Holds lights OFF when sufficient daylight is present regardless of motion detection
- Selectable sensitivity and detection area
- Universal Voltage (120V-277V)
- Mounting height: 10-20 feet

MSHPCD - Motion Sensor High Frequency (Microwave) & Photocell Dimming

- Super high frequency motion sensor (also known as microwave sensor) which detects movement when installed behind low density fixture materials, such as polycarbonate, acrylic and glass diffusers
- Holds lights OFF when sufficient daylight is present regardless of motion detection
- Variably dims output to desired preset level and stand-by period when unoccupied (full on with motion)
- Selectable sensitivity and detection area
- Universal Voltage (120V-277V)
- Mounting height: 10-20 feet



CONTROLS AND SENSORS

LEDRU - EnOcean® LED Relay Zone Controller

- Supports a single LED fixture or multiple daisy chained LED fixtures
- Module installed inside lighting fixture

ESRPU-W-EO - EnOcean® Rocker Switch – Single – Surface Mount

- Wireless single rocker switch with mounting plate
- No batteries needed

ESDRPU-W-EO - EnOcean® Rocker Switch – Double – Surface Mount

- Wireless double rocker switch with mounting plate
- No batteries needed

S3054-N30 - EnOcean® Navigan NWC 300U – Commissioning Tool

- Navigan Wireless Commissioner is used to configure EnOcean controllers & sensors
- It can be used to define link tables, change parameters/settings, and to edit & store projects
- Configuration settings can be saved and cloned to enable quick configuration
- Connectivity is through the NWC 300U USB Stick

EOSWU-W-EO - EnOcean® Occupancy Sensor – Wall Mount

- Wireless wall mounted occupancy sensor
- Solar powered - no batteries needed (coin battery operated in low light conditions)
- PIR motion sensor with both wide angle (50') and long range (100') options
- Mounting height: 6-8 feet

EOSCU-W-EO - EnOcean® Occupancy Sensor – Ceiling Mount

- Wireless ceiling mounted occupancy sensor
- Solar powered - no batteries needed (coin battery operated in low light conditions)
- PIR motion sensor with 360 degree viewing angle lens (34' diameter)
- Mounting height: 7-10 feet

EOSCU-W-EO - EnOcean® Light Level Sensor

- Light Level sensor that measures and reports the level of available natural light
- Solar powered - no batteries needed (coin battery operated in low light conditions)
- Enables implementation of daylight harvesting control systems
- Mounting position: At the ceiling, close to ambient light source



Los Angeles Lighting Mfg. Co.

Contact Us
 T: 626-454-8300 10141 Olney Street
 F: 626-454-8399 El Monte, CA 91731
 www.lalighting.com Made in the USA



Due to continued product improvements and enhancements, Los Angeles Lighting Manufacturing Company reserves the right to alter specifications, dimensions, data, and/or materials without notice. Please visit our website to view the most current information.

© 2022 LOS ANGELES LIGHTING MANUFACTURING CO. ALL RIGHTS RESERVED.

Revised: 07/27/19



MADE IN THE USA
 BAA Compliant

OPTICAL OPTIONS

STANDARD LENSES FOR MBL229

DRP8	High Impact Clear Prismatic Acrylic, Nom. 0.187 OA Thickness, Female Prisms 3/16 Square Base
DRP2	High Impact Clear Prismatic Acrylic, Nom. 0.125 OA Thickness, Female Prisms 3/16 Square Base

ADDITIONAL AVAILABLE LENSES

(Not all optics suitable for fixture. Please consult factory to ensure selected optical option suits fixture. Please consult factory regarding any optical options not shown)

EXTRUDED PRISMATIC PATTERNS

FPA2	Frosted Prismatic Acrylic, Nom. 0.125 OA Thickness
PA2	Clear Prismatic Acrylic, Nom. 0.125 OA Thickness, Female Prisms 3/16 Square Base
PA	Clear Prismatic Acrylic, No Thickness Specified, Female Prisms 3/16 Square Base
PA3	Clear Prismatic Acrylic, Min. 0.125 OA Thickness, Female Prisms 3/16 Square Base
PA8	Clear Prismatic Acrylic, Nom. 0.187 OA Thickness, Female Prisms 3/16 Square Base
P15	Clear Prismatic Acrylic, Nom. 0.200 OA Thickness, Female Prisms 3/8 Square Base
P195	Clear Prismatic Acrylic, Nom. 0.150 OA Thickness, Male Conical Prisms 3/16 Square Base
P3E	3E Batwing Pattern Lens
P195RF	Clear Prismatic Acrylic, 19 Shunts Radio Frequencies To Ground, Nom. 0.150 OA Thickness

FLAT DIFFUSERS

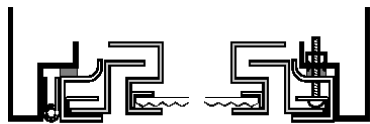
FFA	Frosted Flat Acrylic, No Thickness Specified	FFA2	Frosted Flat Acrylic, Nom. 0.125 Thickness
CA	Clear Acrylic, No Thickness Specified	CA2	Clear Acrylic, Nom. 0.125 OA Thickness
CA8	Clear Acrylic, Nom. 0.187 OA Thickness		

HIGH IMPACT

VL25	Clear Polycarbonate, Nom. 0.125 Thickness with 0.125 Clear Prismatic Acrylic Overlay
VL37	Clear Polycarbonate, Nom. 0.250 Thickness with 0.125 Clear Prismatic Acrylic Overlay
CPC2	Clear Polycarbonate, Nom. 0.125 OA Thickness
CPC8	Clear Polycarbonate, Nom. 0.187 OA Thickness
PPC2	Clear Prismatic Polycarbonate, Nom. 0.125 OA Thickness, Female Prisms 3/16 Square Base
PPC8	Clear Prismatic Polycarbonate, Nom. 0.187 OA Thickness, Female Prisms 3/16 Square Base
DRP2	High Impact Clear Prismatic Acrylic, Nom. 0.125 OA Thickness, Female Prisms 3/16 Square Base
DRP3	High Impact Clear Prismatic Acrylic, Min. 0.125 OA Thickness, Female Prisms 3/16 Square Base
DRP8	High Impact Clear Prismatic Acrylic, Nom. 0.187 OA Thickness, Female Prisms 3/16 Square Base

DOOR FRAME

CROSS SECTION



FEATURES

- Full Length Piano Hinge
- Two Captive Screws
- Welded Inner Frame Lens Retainer Rail

FS W

FINISHES

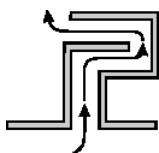
- W** White Enamel
- B** Black Enamel

STYLES

- FS** Flat Steel

AIR SLOT

- Formed air slot
- Allows air circulation for heat removal



Los Angeles Lighting Mfg. Co.

Contact Us
 T: 626-454-8300 10141 Olney Street
 F: 626-454-8399 El Monte, CA 91731
 www.lalighting.com Made in the USA



Due to continued product improvements and enhancements, Los Angeles Lighting Manufacturing Company reserves the right to alter specifications, dimensions, data, and/or materials without notice. Please visit our website to view the most current information.

© 2022 LOS ANGELES LIGHTING MANUFACTURING CO. ALL RIGHTS RESERVED.

Revised: 07/27/19



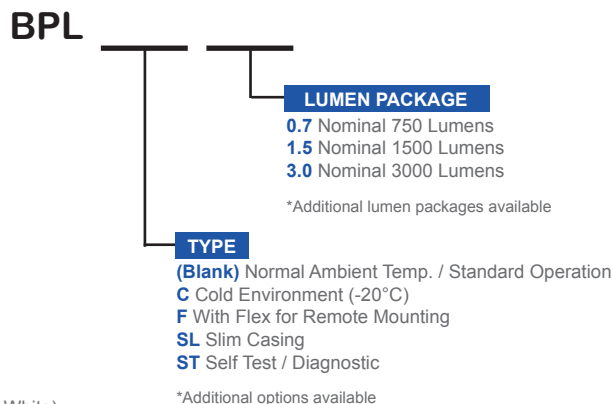
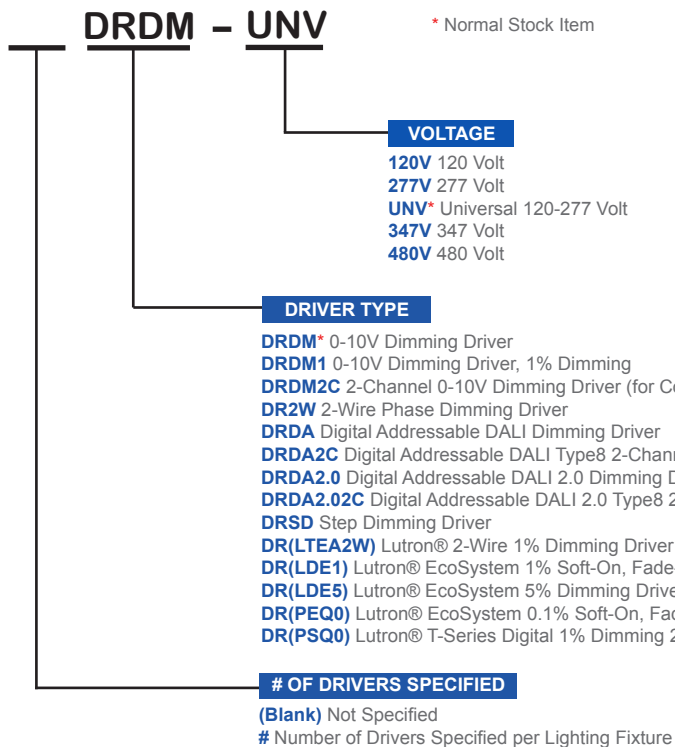
MADE IN THE USA
BAA Compliant

DRIVER OPTIONS

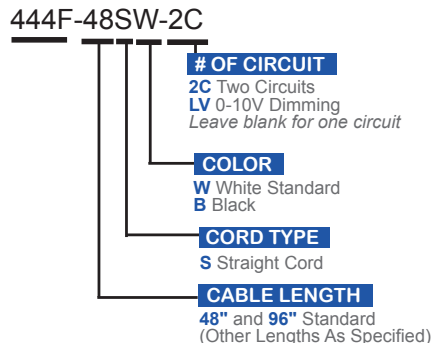
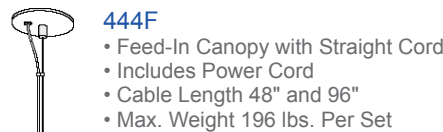
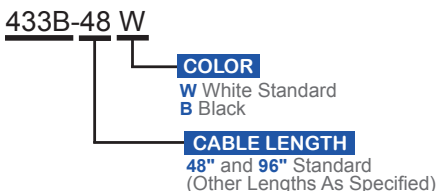
PLEASE CONSULT FACTORY TO SEE IF YOUR SELECTED DRIVER OPTION WORKS WITH THIS FIXTURE.

BATTERY PACK OPTIONS

PLEASE CONSULT FACTORY TO SEE IF YOUR SELECTED BATTERY PACK OPTION WORKS WITH THIS FIXTURE.



ACCESSORIES



NEEDED PER FIXTURE:
 • 3x Blank Canopy with Cable (433B)
 • 1x Feed-In Canopy with Straight Cord (444F)

CUSTOM COLORS

- BLK - Matte Black**
- CS - Camaro Silver**
- BZ - Statuary Bronze**

Variety of RAL colors & Axalta/DuPont colors available upon request.



Los Angeles Lighting Mfg. Co.
 Contact Us
 T: 626-454-8300 10141 Olney Street
 F: 626-454-8399 El Monte, CA 91731
 www.lalighting.com Made in the USA



Due to continued product improvements and enhancements, Los Angeles Lighting Manufacturing Company reserves the right to alter specifications, dimensions, data, and/or materials without notice. Please visit our website to view the most current information.

© 2022 LOS ANGELES LIGHTING MANUFACTURING CO. ALL RIGHTS RESERVED.

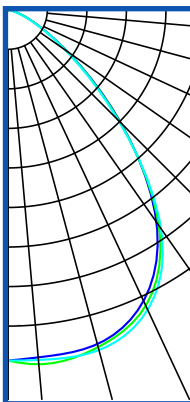
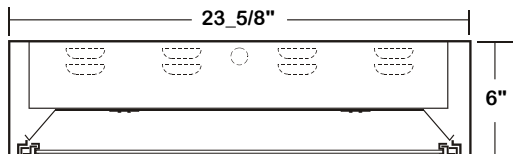
Revised: 07/27/19



PHOTOMETRIC DATA - MBL229 SERIES

MBL229-8-2L-FSW-DRP8-1DRDM-UNV-2/850HT

TEST NO.=LA-T3144-2
 LED TYPE=144 LED MODULE
 NO. OF MODULE=2
 SYSTEM WATT (W)=49.5
 CRI ≥ 80
 L70(Hrs.) ≥ 50,000
 PHOTOMETRY TYPE=C



CANDLEPOWER			
ANGLE	END	45	CROSS
0	3452	3451	3452
5	3433	3502	3459
15	3405	3436	3466
25	3161	3212	3256
35	2550	2591	2630
45	1572	1555	1540
55	717	704	695
65	266	260	255
75	76	73	74
85	11	11	11
90	1	1	1
95	0	0	0
115	0	0	0
125	0	0	0
135	0	0	0
145	0	0	0
155	0	0	0
165	0	0	0
175	0	0	0
180	0	0	0

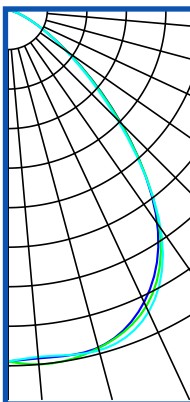
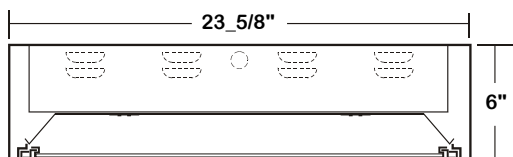
ZONAL LUMEN SUMMARY			
DEGREES	LUMENS	% LAMP	% FIXTURE
0-30	2791	31.9	42.28
0-40	4419	50.5	66.93
0-60	6256	71.4	94.76
0-90	6602	75.4	100.0
90-120	0.1	0.0	0.0
90-150	0.1	0.0	0.0
90-180	0.1	0.0	0.0
0-180	6602	75.4	100.00

Luminaire Output= 6602 lumens
 Luminaire Efficacy = 133.3 lm/W

SPACING CRITERION	
ALONG	ACROSS
1.21	1.24

MBL229-12-2L-FSW-DRP8-1DRDM-UNV-2/850HT

TEST NO.=LA-T3145-2
 LED TYPE=144 LED MODULE
 NO. OF MODULE=2
 SYSTEM WATT (W)=76.1
 CRI ≥ 80
 L70(Hrs.) ≥ 50,000
 PHOTOMETRY TYPE=C



CANDLEPOWER			
ANGLE	END	45	CROSS
0	5112	5112	5112
5	5088	5176	5067
15	5085	5093	5127
25	4691	4762	4847
35	3791	3845	3877
45	2334	2313	2253
55	1065	1054	1030
65	386	386	381
75	111	111	110
85	1	1	1
90	1	1	0
95	0	0	0
115	0	0	0
125	0	0	0
135	0	0	0
145	0	0	0
155	0	0	0
165	0	0	0
175	0	0	0
180	0	0	0

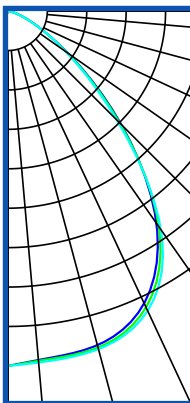
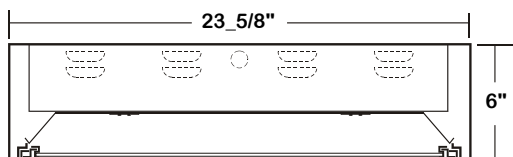
ZONAL LUMEN SUMMARY			
DEGREES	LUMENS	% LAMP	% FIXTURE
0-30	4141	31.8	42.2
0-40	6553	50.4	66.9
0-60	9280	71.4	94.76
0-90	9793	75.4	100
90-120	0.2	0.0	0.0
90-150	0.2	0.0	0.0
90-180	0.2	0.0	0.0
0-180	9793	75.4	100

Luminaire Output= 9793 lumens
 Luminaire Efficacy = 128.7 lm/W

SPACING CRITERION	
ALONG	ACROSS
1.21	1.24

MBL229-16-2L-FSW-DRP8-1DRDM-UNV-2/850HT

TEST NO.=LA-T3136-2
 LED TYPE=144 LED MODULE
 NO. OF MODULE=2
 SYSTEM WATT (W)=103.3
 CRI ≥ 80
 L70(Hrs.) ≥ 50,000
 PHOTOMETRY TYPE=C



CANDLEPOWER			
ANGLE	END	45	CROSS
0	6820	6820	6820
5	6733	6748	6780
15	6648	6696	6726
25	6198	6283	6357
35	4978	5062	5129
45	3080	3039	2964
55	1402	1381	1359
65	514	506	502
75	145	145	140
85	21	22	22
90	1	1	1
95	0	0	0
115	0	0	0
125	0	0	0
135	0	0	0
145	0	0	0
155	0	0	0
165	0	0	0
175	0	0	0
180	0	0	0

ZONAL LUMEN SUMMARY			
DEGREES	LUMENS	% LAMP	% FIXTURE
0-30	5449	31.8	42.2
0-40	8626	50.7	66.9
0-60	12213	71.4	94.7
0-90	12886	75.4	100.0
90-120	0.3	0.0	0.0
90-150	0.3	0.0	0.0
90-180	0.3	0.0	0.0
0-180	12886	75.4	100.00

Luminaire Output= 12886 lumens
 Luminaire Efficacy = 124.7 lm/W

SPACING CRITERION	
ALONG	ACROSS
1.20	1.23

This Space is intentionally left blank.

