



# BAYLIGHTER™

## MBL520 SERIES

### Medium / High Bay Luminaire



- Medium / High Bay Compact Fluorescent Luminaire
- Auditorium, Commercial, Retail Applications
- 40W, 50W, 55W Biax® Lamp
- Powder Coated Finish / Painted After Fabrication
- 95% Enhanced Specular Aluminum Reflectors
- Frame & Lens Assembly With Safety Cables
- 1½" Deep Semi-specular 9-Cell Louver
- Up To 6 Levels Switching
- Available with:
  - 90% White Aluminum Reflectors
  - Emergency Battery Pack
  - Sensor



Photometric Data and IES Files are Available on [www.lalighting.com](http://www.lalighting.com)



**LOS ANGELES LIGHTING MFG. CO.**

10141 OLNEY ST. / EL MONTE, CA 91731

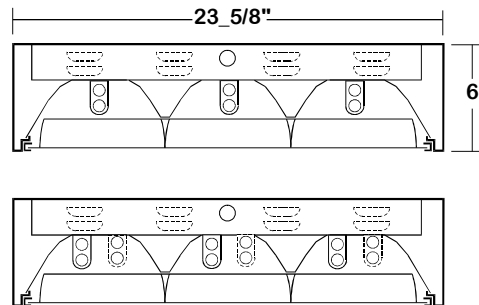
TEL : 626-454-8300 FAX : 626-454-8399

[www.lalighting.com](http://www.lalighting.com)



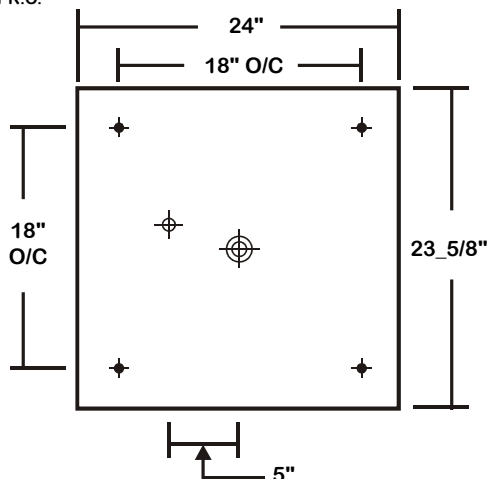
# MBL520 SERIES

## CROSS SECTION



## BACK PLATE

- + 11/16" STEM MTG. K.O.
- ⊕ 7/8" OFFSET K.O.
- ⊕ 2" K.O.

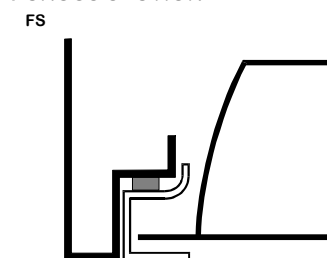


## CATALOG NUMBER

	NOMINAL WIDTH X LENGTH	TOTAL LAMPS
<b>MBL520-3-2B</b>	2' X 2'	3
<b>MBL520-6-2B</b>	2' X 2'	6

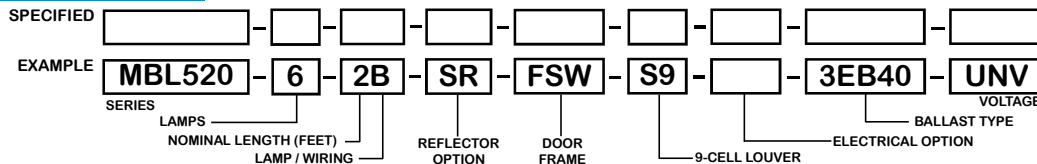
## DOOR FRAME INFORMATION

### ● CROSS SECTION



- FINISHES**  
W - White Enamel  
B - Black Enamel
- STYLES**  
FS - Flat Steel

## ORDERING GUIDE



**NOTE: LAMP/WIRING\***  
B= Compact Twin Tube

## OPTIONS AND ACCESSORIES

### ● REFLECTOR OPTIONS

- Specular Aluminum Reflector (95%)
- White Aluminum Reflector (90%)

### SUFFIX

- SR
- WR

### ● ELECTRICAL OPTIONS

- Emergency Battery Pack
- External Line Fusing (HLR/GLR)
- Radio Interference Filters
- Motion Sensor

### SUFFIX

- BP\*
- ELF
- RIF
- MS

### ● BALLAST OPTIONS

- Electronic 40W Compact Twin Tube
- Electronic 50W Compact Twin Tube
- Electronic 55W Compact Twin Tube

### SUFFIX

- EB40
- EB50
- EB55

### ● ACCESSORIED

- Ceiling Spacers

### CAT. NO.

\*

\*See appropriate reference page

## SPECIFICATIONS

### ● TYPE

Surface mounted, general area luminaire for medium bay / high bay applications. 6-lamp fixtures with 50w or 55w lamps and ballasts must be spaced a minimum of 1 1/2" from ceiling when surface mounted.

### ● CONSTRUCTION

20 gauge cold rolled steel housing. Welded construction with louvered vents on each side for heat removal.

### ● FINISH

Baked white powder coated finish, minimum reflectance 90%, painted after fabrication.

### ● REFLECTOR

Enhanced aluminum reflectors, 95% reflectance.

### ● DOOR FRAME

20 gauge cold rolled steel in various finishes. T-hinges and positive spring loaded latches. Safety cables attached.

### ● OPTICS

1 1/2" deep semi-specular parabolic 9-cell louver standard.

### ● WIRING

120v 60Hz., 277v 60Hz., UNV (universal voltage 120v thru 277v.) or as otherwise specified.

### ● LABELS

Up to 6 levels of switching available as specified.

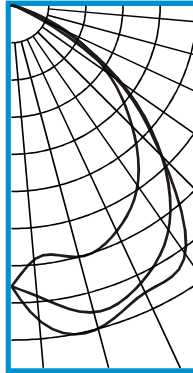
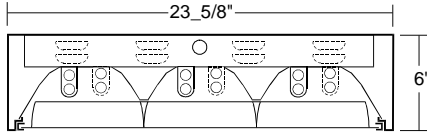
U.L. Listed. Suitable for damp locations.



**PHOTOMETRIC DATA**

**MBL520-6-2B-SR-FSW-S9-EB40**

TEST NO.=LA-T0435  
 LAMP TYPE=F40BX  
 NO. OF LAMP=6  
 LUMENS PER LAMP=3150  
 WATTS PER LAMP=40  
 BALLAST FACTOR=1  
 PHOTOMETRY TYPE=C



**CANDLEPOWER**

ANGLE	END	45	CROSS
0	4800	4800	4800
5	4364	1982	5399
15	4446	5428	5718
25	4255	5233	5410
35	3757	4681	5180
45	2917	3631	3628
55	2016	2293	2205
65	1046	938	549
75	207	181	110
85	76	53	19
90	2	3	1
95	0	0	0
105	0	0	0
115	0	0	0
125	0	0	0
135	0	0	0
145	0	0	0
155	0	0	0
165	0	0	0
175	0	0	0
180	0	0	0

**ZONAL LUMEN SUMMARY**

DEGREES	LUMENS	% LAMP	% FIXTURE
0-30	4289	22.7	33.3
0-40	7163	37.9	55.5
0-60	11812	62.5	91.6
0-90	12895	68.2	100.0
90-120	1	0.0	0
90-150	1	0.0	0
90-180	1	0.0	0
0-180	12895	68.2	100.0

Lumen Output = 12895 lumens  
 Luminaire Efficiency = 68.2%

**SPACING CRITERION**

ALONG	ACROSS
1.24	1.52

This space is intentionally left blank.

This space is intentionally left blank.

This space is intentionally left blank.

