



BAYLIGHTER™

MHB100 SERIES Ultra High Bay Luminaire



- 46" x 46", Ultra High Bay Luminaire
- Typical Mounting Height 40' or Higher
- Quarter Turn Rotary Locking Sockets
- Powder Coated Finish / Painted After Fabrication
- Frame & Lens Assembly With Safety Cables
- Multi-Level Switching
- Removable Wiring Access Plate
- Available with:
 - Fluorescent, LED and LED T8 (Internally Driven)
 - 95% Enhanced Specular Aluminum Reflectors
 - Variety of Lenses
 - Tamper Proof Screws
 - Emergency Battery Pack
 - Sensor



Photometric Data and IES Files are Available on www.lalighting.com

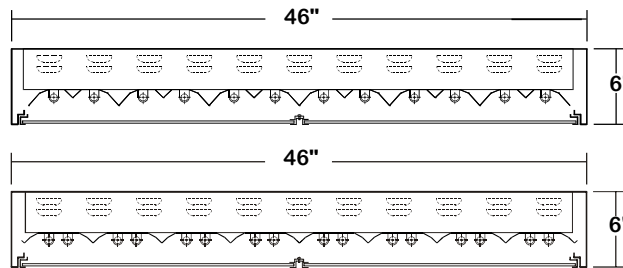


LOS ANGELES LIGHTING MFG. CO.
 10141 OLNEY ST. / EL MONTE, CA 91731
TEL : 626-454-8300 FAX : 626-454-8399
www.lalighting.com



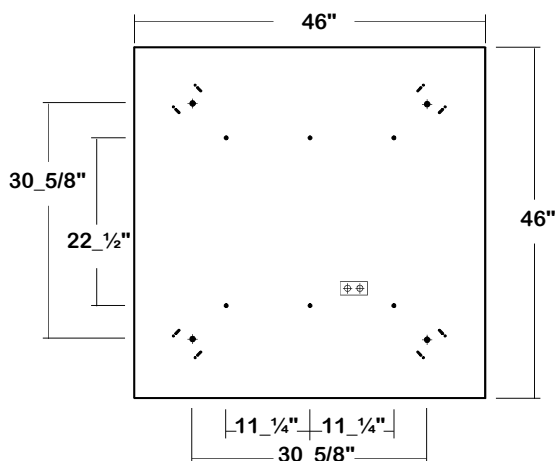
MHB100 SERIES

CROSS SECTION



BACK PLATE

- V-HOOK ♦ 11/16" STEM MTG. K.O. ⊕ ⊕ ACCESS PLATE
- 3/8-16 THREADED INSERT

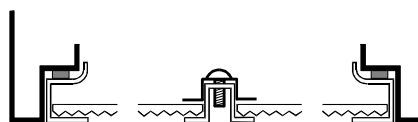


CATALOG NUMBER

	NOMINAL LENGTH	TOTAL LAMPS
MHB100-12-4M	4'	12
MHB100-16-4M	4'	16

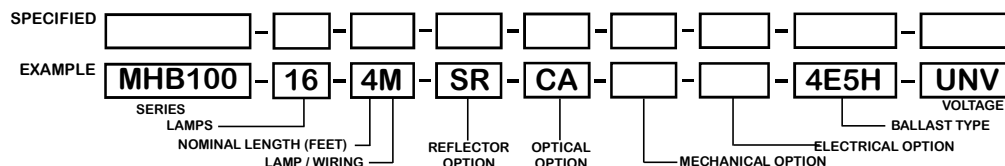
DOORFRAME INFORMATION

• CROSS SECTION



- FS W**
- FINISHES**
W - White Enamel
B - Black Enamel
- STYLES**
FS - Flat Steel

ORDERING GUIDE



NOTE: LAMP/WIRING*
M= Miniature Bi-PinT5

OPTIONS AND ACCESSORIES

<ul style="list-style-type: none"> ● REFLECTOR OPTIONS Specular Aluminum Reflector (95%) White Aluminum Reflector (90%) 	<p>SUFFIX</p> <p>SR</p> <p>WR</p>	<ul style="list-style-type: none"> ● MECHANICAL OPTIONS Tamper Proof Screws (Hex Socket With Post) 	<p>SUFFIX</p> <p>TP</p>	<ul style="list-style-type: none"> ● BALLAST OPTIONS Electronic Ballast T5 Electronic Ballast T5HO Electronic T5HO Step Dimming 	<p>SUFFIX</p> <p>E5</p> <p>E5H</p> <p>E5HSD</p>
<ul style="list-style-type: none"> ● OPTICAL OPTIONS Clear Acrylic Clear Polycarbonate .125 Clear Prismatic Polycarbonate .125 High Impact Clear Prismatic Acrylic .125 High Impact clear Prismatic Acrylic .187 * Other Lens Available Upon Request 	<p>SUFFIX</p> <p>CA</p> <p>CPC2</p> <p>PPC2</p> <p>DRP2</p> <p>DRP8</p>	<ul style="list-style-type: none"> ● ELECTRICAL OPTIONS Emergency Battery Pack External Line Fusing (HLR/GLR) Radio Interference Filters Motion Sensor 	<p>SUFFIX</p> <p>BP*</p> <p>ELF</p> <p>RIF</p> <p>MS</p>		

*See appropriate reference page

SPECIFICATIONS

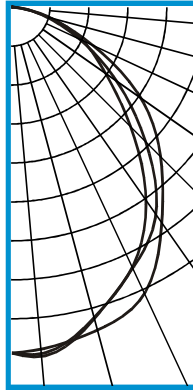
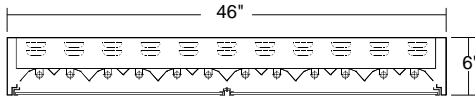
- TYPE: 46" X 46" metal sided high bay luminaire for ultra high bay applications.
- CONSTRUCTION: 20 ga. cold rolled steel welded construction, painted after fabrication. Quarter turn rotary locking lampholders standard.
- FINISH: Baked white powder coated finish, minimum reflectance 90%, painted after fabrication.
- REFLECTOR: Enhanced aluminum reflectors, 95% reflectance. High reflectance white aluminum reflector available.
- DOOR FRAME: 20 gauge cold rolled steel door frame with safety cables, T-hinges and spring loaded latches. Safety cables attached.
- OPTICS: Available with various high impact acrylic or polycarbonate lenses.
- WIRING: 120v 60Hz., 277v 60Hz., UNV (universal voltage 120v thru 277v.) or as otherwise specified. Multi-level s of witching available as specified.
- LABELS: U.L. Listed. Suitable for damp locations.



PHOTOMETRIC DATA

MHB100-12-4M-SR-CA-E5H

TEST NO.=LA-T0734-1
 LAMP TYPE=F54T5HO
 NO. OF LAMP=12
 LUMENS PER LAMP=5000
 WATTS PER LAMP=54
 BALLAST FACTOR=1
 PHOTOMETRY TYPE=C

CANDLEPOWER			
ANGLE	END	45	CROSS
0	22355	22355	22355
5	22180	22658	22478
15	21578	20784	20715
25	20364	18564	18477
35	16900	16247	15106
45	13577	12187	10811
55	10125	8206	7344
65	5687	4738	5008
75	2352	2114	2501
85	297	436	364
90	3	1	0
95	0	0	0
105	0	0	0
115	0	0	0
125	0	0	0
135	0	0	0
145	0	0	0
155	0	0	0
165	0	0	0
175	0	0	0
180	0	0	0

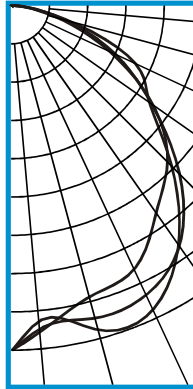
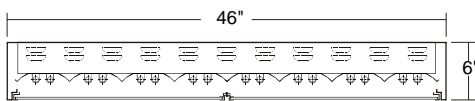
ZONAL LUMEN SUMMARY			
DEGREES	LUMENS	% LAMP	% FIXTURE
0-30	16880	28.1	32.6
0-40	27010	45.0	52.2
0-60	44050	73.4	85.1
0-90	51770	86.3	100.0
90-120	0	0.0	0
90-150	0	0.0	0
90-180	0	0.0	0
0-180	51771	86.3	100.0

Lumen Output = 51771 lumens
 Luminaire Efficiency = 86.3%

SPACING CRITERION	
ALONG	ACROSS
1.22	1.13

MHB100-16-4M-SR-CA-E5H

TEST NO.=LA-T0697
 LAMP TYPE=F54T5HO
 NO. OF LAMP=16
 LUMENS PER LAMP=5000
 WATTS PER LAMP=54
 BALLAST FACTOR=1
 PHOTOMETRY TYPE=C

CANDLEPOWER			
ANGLE	END	45	CROSS
0	23493	23493	23493
5	22304	22106	21567
15	20540	22049	22898
25	19788	21731	22827
35	17165	19916	19795
45	14993	16124	15354
55	11691	11573	11420
65	7265	7706	9226
75	3226	3636	4011
85	508	679	712
90	2	1	0
95	0	0	0
105	0	0	0
115	0	0	0
125	0	0	0
135	0	0	0
145	0	0	0
155	0	0	0
165	0	0	0
175	0	0	0
180	0	0	0

ZONAL LUMEN SUMMARY			
DEGREES	LUMENS	% LAMP	% FIXTURE
0-30	18275	22.8	28.1
0-40	30335	37.9	46.6
0-60	52829	66.0	81.1
0-90	65110	81.4	100.0
90-120	0	0.0	0
90-150	0	0.0	0
90-180	0	0.0	0
0-180	65110	81.4	100.0

Lumen Output = 65110 lumens
 Luminaire Efficiency = 81.4%

SPACING CRITERION	
ALONG	ACROSS
1.17	1.31

This space is intentionally left blank.

This space is intentionally left blank.

