

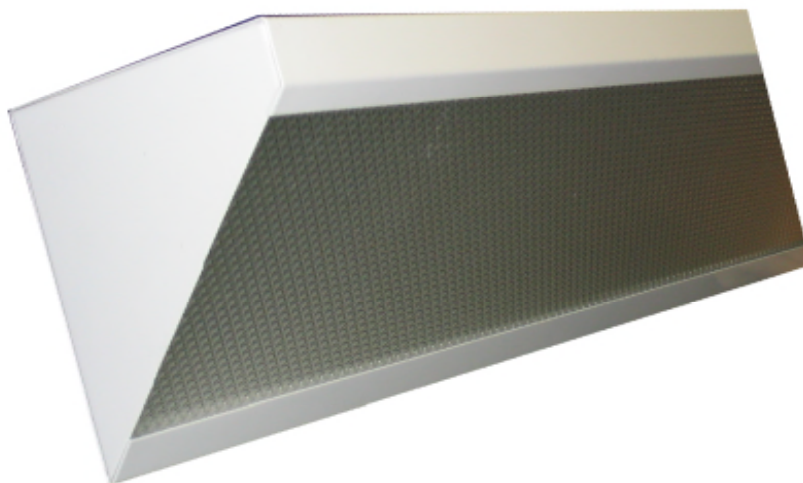


MINIATURE CROSS SECTION

MXANG100 SERIES



Miniature Angle Corner/Ceiling Luminaire



- Corridor and Perimeter Wall Wash
- 20 Ga. Cold Rolled Steel Welded Housing
- Powder Coated Finish / Painted After Fabrication
- Frameless / Lift-and-Shift Lens
- Available with:
 - Custom Colors
 - Variety of Lenses
 - Emergency Battery Pack



Photometric Data and IES Files are Available on www.lalighting.com



LOS ANGELES LIGHTING MFG. CO.

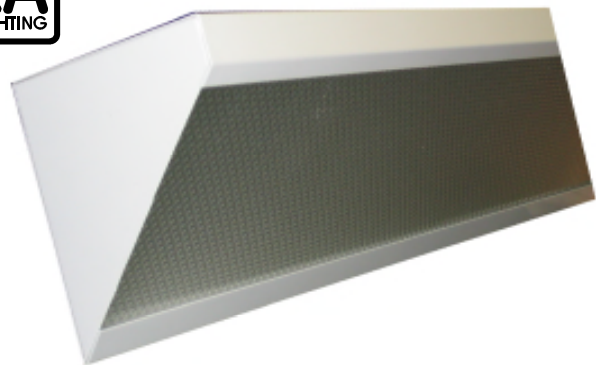
10141 OLNEY ST. / EL MONTE, CA 91731

TEL : 626-454-8300 FAX : 626-454-8399

www.lalighting.com

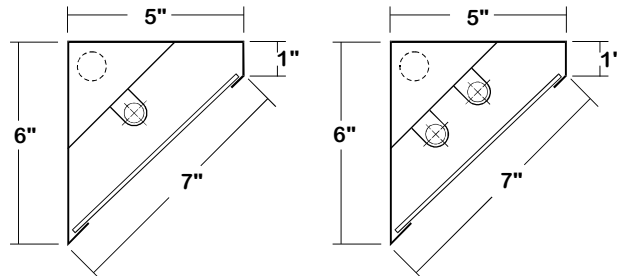
MINIATURE CROSS SECTION - Fluorescent

LED Equivalent Products Available on www.lalighting.com



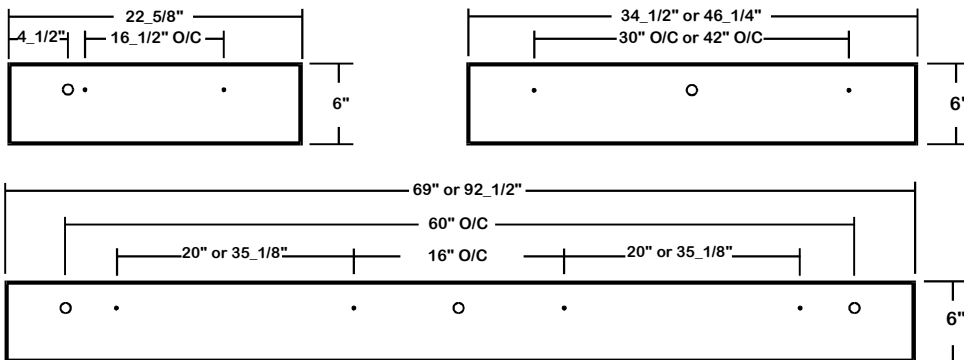
MXANG100 SERIES

CROSS SECTION



BACK PLATE

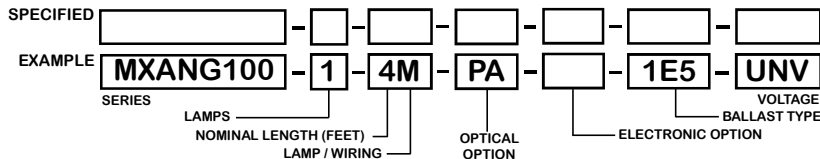
- 3/16" MTG. K.O.
- 7/8" K.O.



CATALOG NUMBER

	NOMINAL LENGTH	TOTAL LAMPS		NOMINAL LENGTH	TOTAL LAMPS
MXANG100-1-2M	2'	1	MXANG100-2-2M	2'	2
MXANG100-1-3M	3'	1	MXANG100-2-3M	3'	2
MXANG100-1-4M	4'	1	MXANG100-2-4M	4'	2
MXANG100-1-6MT	6'	2	MXANG100-2-6MT	6'	4
MXANG100-1-8MT	8'	2	MXANG100-2-8MT	8'	4

ORDERING GUIDE



NOTE: LAMP/WIRING*
 M = Miniature Bi-Pin T5
 MT = Miniature Bi-Pin T5, Tandem Wiring

OPTIONS AND ACCESSORIES

● **OPTICAL OPTIONS**

- Clear Acrylic
- Clear Prismatic Acrylic
- Flat White Acrylic

* Other Lens Available Upon Request

SUFFIX
 CA
 PA
 FWA

● **ELECTRICAL OPTIONS**

- Emergency Battery Pack
- External Line Fusing (HLR/GLR)
- Plug-In Branch Wiring Connector System

SUFFIX
 BP*
 ELF
 PIW

● **BALLAST OPTIONS**

- Electronic Ballast T5
- Electronic Ballast T5HO

SUFFIX
 E5*
 E5H*

*See Appropriate Reference Page

SPECIFICATIONS

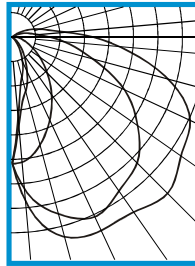
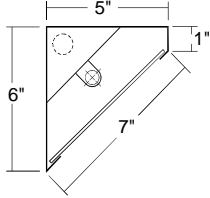
- **TYPE** Miniature surface mounted corner ceiling/wall luminaire with one piece lay-in lens.
- **CONSTRUCTION** 20 ga. cold rolled steel welded housing.
- **FINISH** Baked white powder coated finish, minimum reflectance 90%, painted after fabrication.
- **OPTICS** Clear prismatic acrylic lens standard, other lenses and diffusers available.
- **WIRING** 120v 60Hz., 277v 60Hz., UNV (universal voltage 120v thru 277v.) or as otherwise specified.
- **LABELS** U.L. Listed. Suitable for damp locations.



PHOTOMETRIC DATA

MXANG100-1-4M-PA-E5

TEST NO.=LA-T0722-1
 LAMP TYPE=F28T5
 NO. OF LAMP=1
 LUMENS PER LAMP=2900
 WATTS PER LAMP=28
 BALLAST FACTOR=1
 PHOTOMETRY TYPE=C



CANDLEPOWER

ANGLE	0	45	90	135	180
0	488	488	488	488	488
5	645	594	482	322	286
15	797	707	425	208	150
25	820	762	345	130	87
35	820	719	263	73	36
45	848	681	186	32	2
55	793	588	125	7	0
65	755	475	76	1	0
75	619	318	43	0	0
85	411	199	22	0	0
90	310	143	12	0	0
95	209	100	5	0	0
105	117	58	1	0	0
115	64	25	0	0	0
125	24	4	0	0	0
135	1	0	0	0	0
145	0	0	0	0	0
155	0	0	0	0	0
165	0	0	0	0	0
175	0	0	0	0	0
180	0	0	0	0	0

ZONAL LUMEN SUMMARY

DEGREES	LUMENS	% LAMP	% FIXTURE
0-30	369	12.7	21.2
0-40	602	20.7	34.6
0-60	1108	38.2	63.8
0-90	1625	56.0	93.5
90-120	109	3.8	6.3
90-150	113	3.9	6.5
90-180	113	3.9	6.5
0-180	1737	59.9	100.0

Lumen Output = 1737 lumens
 Luminaire Efficiency = 59.9%

SPACING CRITERION

ALONG	ACROSS
2.24	0.98

This space is intentionally left blank.

This space is intentionally left blank.

This space is intentionally left blank.

