



MINIATURE CROSS SECTION

MXANG200 SERIES



Miniature Angle Corner/Ceiling Luminaire



- Corridor and Perimeter Wall Wash
- 20 Ga. Cold Rolled Steel Welded Housing
- Powder Coated Finish / Painted After Fabrication
- Full Length Piano Hinge and Captive Screws
- Available with:
 - Custom Colors
 - Variety of Lenses
 - Tamper Proof Screws
 - Phil/Pan Machine Screws
 - Emergency Battery Pack



Photometric Data and IES Files are Available on www.lalighting.com



LOS ANGELES LIGHTING MFG. CO.

10141 OLNEY ST. / EL MONTE, CA 91731

TEL : 626-454-8300 FAX : 626-454-8399

www.lalighting.com

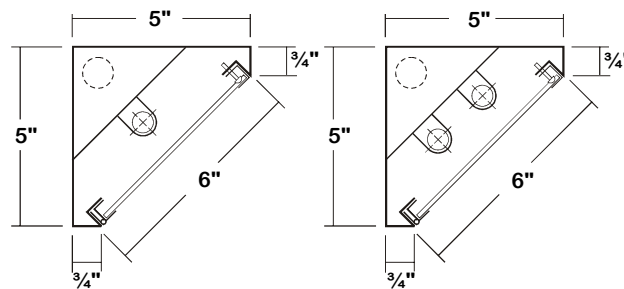
MINIATURE CROSS SECTION - Fluorescent

LED Equivalent Products Available on www.lalighting.com



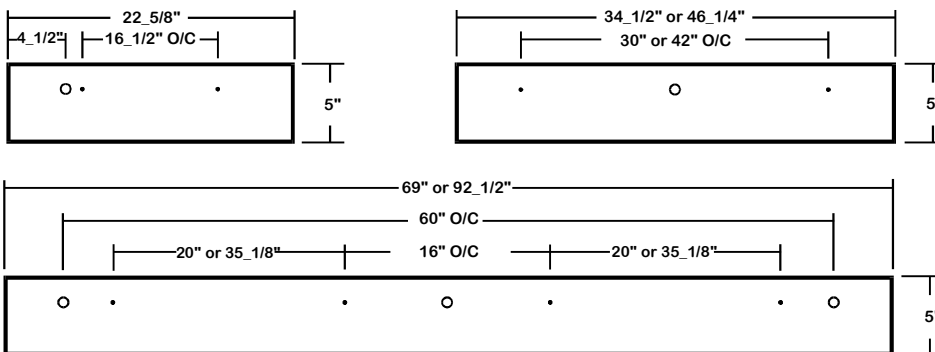
MXANG200 SERIES

CROSS SECTION



BACK PLATE

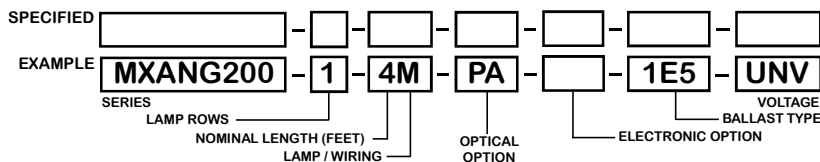
- 3/16" MTG. K.O.
- 7/8" K.O.



CATALOG NUMBER

	NOMINAL LENGTH	TOTAL LAMPS		NOMINAL LENGTH	TOTAL LAMPS
MXANG200-1-2M	2'	1	MXANG200-2-2M	2'	2
MXANG200-1-3M	3'	1	MXANG200-2-3M	3'	2
MXANG200-1-4M	4'	1	MXANG200-2-4M	4'	2
MXANG200-1-6MT	6'	2	MXANG200-2-6MT	6'	4
MXANG200-1-8MT	8'	2	MXANG200-2-8MT	8'	4

ORDERING GUIDE



NOTE: LAMP/WIRING*
 M = Miniature Bi-Pin T5
 MT = Miniature Bi-Pin T5, Tandem Wiring

OPTIONS AND ACCESSORIES

● **OPTICAL OPTIONS**

- Clear Acrylic
- Clear Prismatic Acrylic
- Flat White Acrylic

* Other Lens Available Upon Request

SUFFIX

- CA
- PA
- FWA

● **MECHANICAL OPTIONS**

- Gasketing
- Tamper Proof Screws (Hex Socket With Post)
- Phil/Pan Machine Screws

SUFFIX

- GSK*
- TP
- PP

● **ELECTRICAL OPTIONS**

- Emergency Battery Pack
- External Line Fusing (HLR/GLR)

SUFFIX

- BP*
- ELF

● **BALLAST OPTIONS***

- Electronic T5
- Electronic T5HO

SUFFIX

- xE5
- xE5H

x = Number of Lamps per Ballast

*Refer to www.lalighting.com/resources for more information

SPECIFICATIONS

- **TYPE**
- **CONSTRUCTION**
- **FINISH**
- **DOOR FRAME**
- **OPTICS**
- **WIRING**
- **LABELS**

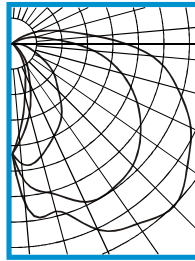
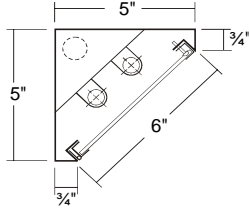
Surface mounted corner ceiling/wall luminaire.
 20 ga. cold rolled steel welded housing.
 Baked white powder coated finish, minimum reflectance 90%, painted after fabrication.
 20 ga. cold rolled steel door frame, full length piano hinge and captive screws.
 Clear prismatic acrylic lens standard, other lenses and diffusers available.
 120v 60Hz., 277v 60Hz., UNV (universal voltage 120v thru 277v.) or as otherwise specified.
 U.L. Listed. Suitable for damp locations.



PHOTOMETRIC DATA

MXANG200-2-4M-PA-E5

TEST NO.=LA-T0862
 LAMP TYPE=F28T5
 NO. OF LAMP=2
 LUMENS PER LAMP=2900
 WATTS PER LAMP=28
 BALLAST FACTOR=1
 PHOTOMETRY TYPE=C



CANDLEPOWER

ANGLE	0	45	90	135	180
0	615	615	615	615	615
5	914	767	676	537	490
15	969	866	643	381	276
25	1148	975	561	229	171
35	1227	985	482	144	82
45	1281	955	362	66	6
55	1194	875	279	16	0
65	1100	769	174	2	0
75	954	631	99	0	0
85	782	457	51	0	0
90	633	348	29	0	0
95	473	247	16	0	0
105	274	141	2	0	0
115	160	61	0	0	0
125	58	13	0	0	0
135	4	0	0	0	0
145	0	0	0	0	0
155	0	0	0	0	0
165	0	0	0	0	0
175	0	0	0	0	0
180	0	0	0	0	0

ZONAL LUMEN SUMMARY

DEGREES	LUMENS	% LAMP	% FIXTURE
0-30	522	9.0	18.3
0-40	878	15.1	30.7
0-60	1667	28.7	58.4
0-90	2588	44.6	90.6
90-120	258	4.5	9.0
90-150	268	4.6	9.4
90-180	268	4.6	9.4
0-180	2856	49.2	100.0

Lumen Output = 2856 lumens
 Luminaire Efficiency = 49.2%

SPACING CRITERION

ALONG	ACROSS
2.45	1.25

This space is intentionally left blank.

This space is intentionally left blank.

This space is intentionally left blank.

