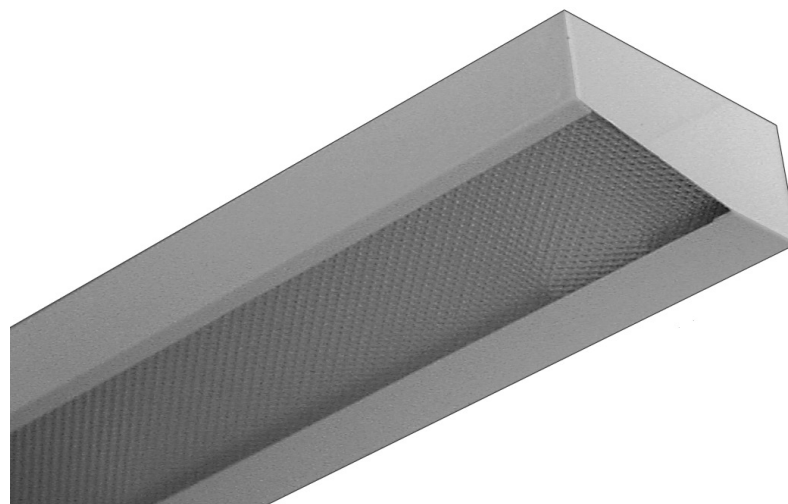


MINIATURE CROSS SECTION

MXBAN100 SERIES



Wall Bracket / Under Cabinet Luminaire



- 1 or 2-Lamp 28WT5 / 54WT5H0
- Welded and Painted After Fabrication
- Frameless Lay-In Style Lens
- Available with:
 - Custom Colors
 - Up-Light
 - Variety of Lenses
 - Emergency Battery Pack
 - Sensor
 - Switch



Photometric Data and IES Files are Available on www.lalighting.com



LOS ANGELES LIGHTING MFG. CO.

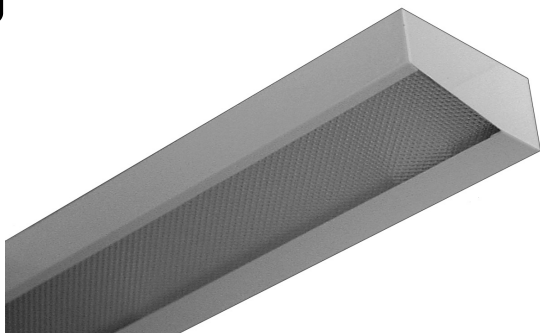
10141 OLNEY ST. / EL MONTE, CA 91731

TEL : 626-454-8300 FAX : 626-454-8399

www.lalighting.com

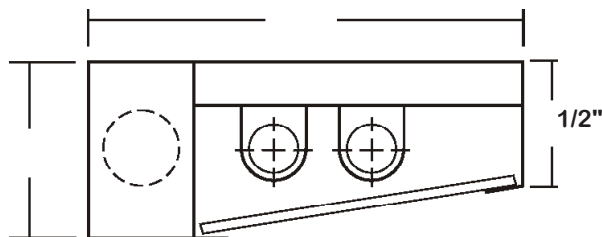
MINIATURE CROSS SECTION - Fluorescent

LED Equivalent Products Available on www.lalighting.com



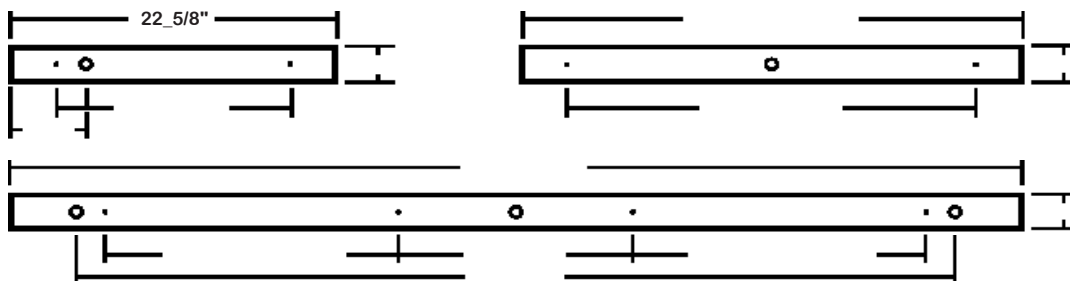
MXBAN100 SERIES

CROSS SECTION



BACK PLATE

- 3/16" MTG. K.O.
- 7/8" K.O.



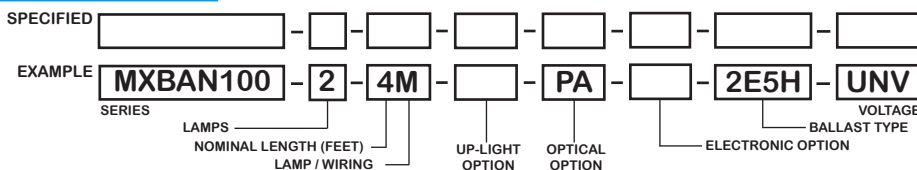
CATALOG NUMBER

	NOMINAL LENGTH	TOTAL LAMPS
MXBAN100-1-2M	2'	1
MXBAN100-1-3M	3'	1
MXBAN100-1-4M	4'	1
MXBAN100-1-6MT	6'	2
MXBAN100-1-8MT	8'	2
MXBAN100-2-2M	2'	2
MXBAN100-2-3M	3'	2
MXBAN100-2-4M	4'	2
MXBAN100-2-6MT	6'	4
MXBAN100-2-8MT	8'	4

Electrical Option
MS - MOTION SENSOR

- Motion sensor for under cabinet application.
- 51° sensor activating zone, covers 24" x 48" area when mounted 20" above working surface.
- 30 seconds to 30 minutes time delay adjustability.

ORDERING GUIDE



NOTE: LAMP/WIRING*
M= Miniature Bi-Pin T5
MT= Miniature Bi-Pin T5, Tandem Wiring

OPTIONS AND ACCESSORIES

<p>● UP-LIGHT OPTIONS</p> <p>Uplight w/ Clear Acrylic Dust Cover SUFFIX UCA</p> <p>Uplight w/ Clear Prismatic Acrylic Dust cover SUFFIX UPA</p>	<p>● OPTICAL OPTIONS</p> <p>Clear Acrylic SUFFIX CA</p> <p>* Other Lens Available Upon Request</p> <p>*See Appropriate Reference Page</p>	<p>● ELECTRICAL OPTIONS</p> <p>Emergency Battery Pack SUFFIX BP*</p> <p>External Line Fusing (HLR/GLR) Switch SUFFIX ELF*</p> <p>Motion Sensor SUFFIX MS</p> <p>● BALLAST OPTIONS</p> <p>Electronic Ballast T5 SUFFIX E5*</p> <p>Electronic Ballast T5HO SUFFIX E5H*</p>
--	---	---

SPECIFICATIONS

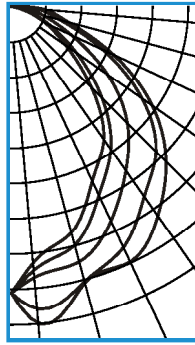
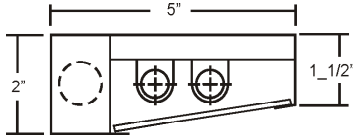
- **TYPE** Miniature under cabinet luminaire.
- **CONSTRUCTION** 20 ga. cold rolled steel welded housing.
- **FINISH** Baked white powder coated finish, minimum reflectance 90% painted after fabrication.
- **UP-LIGHT** Optional up-light w/ acrylic dust cover, available with clear acrylic or clear prismatic.
- **OPTICS** Frameless lay-in lens. Clear prismatic acrylic lens standard. Extensive variety of lenses and diffusers available.
- **WIRING** 120v 60Hz., 277v 60Hz., UNV (universal voltage 120v thru 277v.) or as otherwise specified.
- **LABELS** U.L. Listed. Suitable for damp locations.



PHOTOMETRIC DATA

MXBAN100-2-4M-PA-E5

TEST NO.=LA-T0623
 LAMP TYPE=F28T5
 NO. OF LAMP=2
 LUMENS PER LAMP=2900
 WATTS PER LAMP=28
 BALLAST FACTOR=1
 PHOTOMETRY TYPE=C



CANDLEPOWER

ANGLE	0	45	90	135	180
0	1272	1272	1272	1272	1272
5	1413	1349	1206	1173	1139
15	1267	1262	1172	1095	1037
25	1249	1177	1046	919	849
35	1130	1025	884	768	713
45	967	904	724	563	497
55	758	703	516	347	291
65	495	443	289	182	162
75	258	221	144	79	51
85	148	114	54	10	2
90	71	44	7	0	0
95	14	7	0	0	0
105	0	0	0	0	0
115	0	0	0	0	0
125	0	0	0	0	0
135	0	0	0	0	0
145	0	0	0	0	0
155	0	0	0	0	0
165	0	0	0	0	0
175	0	0	0	0	0
180	0	0	0	0	0

ZONAL LUMEN SUMMARY

DEGREES	LUMENS	% LAMP	% FIXTURE
0-30	936	16.1	30.5
0-40	1501	25.9	48.9
0-60	2536	43.7	82.6
0-90	3060	52.8	99.7
90-120	9	0.2	0.3
90-150	9	0.2	0.3
90-180	9	0.2	0.3
0-180	3069	52.9	100.0

Lumen Output = 3069 lumens
 Luminaire Efficiency = 52.9%

SPACING CRITERION

ALONG	ACROSS
1.37	1.14

This space is intentionally left blank.

This space is intentionally left blank.

This space is intentionally left blank.

