



MINIATURE CROSS SECTION

MXIND100 SERIES

Miniature Industrial Luminaire



- One Lamp 28WT5 / 54WT5HO / T8, Miniature Industrial Luminaire
- 22 Ga. Cold Rolled Steel Housing
- Baked White Polyester Finish
- Screw-On End Caps
- 6" Width 24 Ga. Cold Rolled Steel Reflector
- Reflector Secured by Two Quarter Turn Fasteners
- Suitable for Damp Locations
- Available with:
 - Fluorescent, LED and LED T8 (Internally Driven)
 - Custom Colors
 - Up-Light Reflector
 - Emergency Battery Pack



Photometric Data and IES Files are Available on www.lalighting.com



LOS ANGELES LIGHTING MFG. CO.

10141 OLNEY ST. / EL MONTE, CA 91731

TEL : 626-454-8300 FAX : 626-454-8399

www.lalighting.com

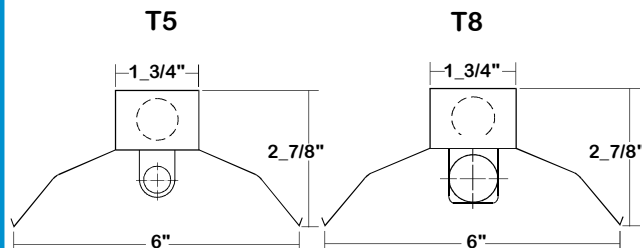
MINIATURE CROSS SECTION - Fluorescent

LED Equivalent Products Available on www.lalighting.com



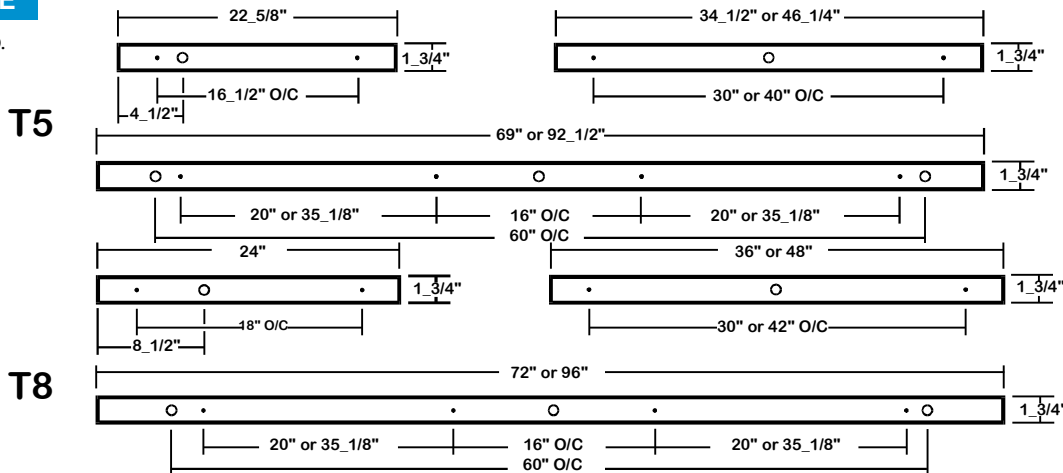
MXIND100 SERIES

CROSS SECTION



BACK PLATE

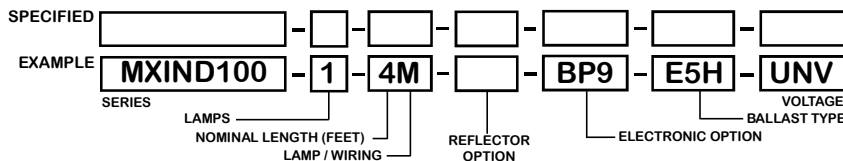
- 3/16" MTG. K.O.
- 7/8" K.O.



CATALOG NUMBER

	NOMINAL LENGTH	TOTAL LAMPS		NOMINAL LENGTH	TOTAL LAMPS
MXIND100-1-2M	2'	1	MXIND100-1-2R	2'	1
MXIND100-1-3M	3'	1	MXIND100-1-3R	3'	1
MXIND100-1-4M	4'	1	MXIND100-1-4R	4'	1
MXIND100-1-6MT	6'	2	MXIND100-1-6RT	6'	2
MXIND100-1-8MT	8'	2	MXIND100-1-8RT	8'	2

ORDERING GUIDE



NOTE: LAMP/WIRING*
 M = Miniature Bi-Pin T5
 R = Miniature Bi-Pin T8
 MT = Miniature Bi-Pin T5, Tandem Wiring
 RT = Miniature Bi-Pin T8, Tandem Wiring

OPTIONS AND ACCESSORIES

REFLECTOR OPTIONS	SUFFIX	ELECTRICAL OPTIONS	SUFFIX	BALLAST OPTIONS	SUFFIX	ACCESSORIES	CAT. No.
10% Slotted Reflector	S10	Emergency Battery Pack	BP9	Electronic Ballast T5	E5*	Fixture Suspension System	*
Specular Aluminum Reflector (95%)	SR	External Line Fusing (HLR/GLR)	ELF	Electronic Ballast T5HO	E5H*		
White Aluminum Reflector (90%)	WR	Plug-In Branch Wiring Connector System	*	Electronic Ballast T8	E8*		

*See Appropriate Reference Page

SPECIFICATIONS

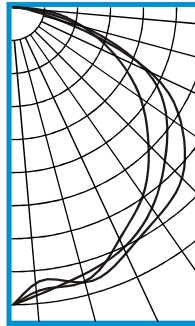
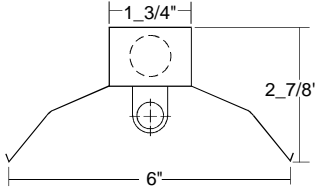
- **TYPE** Miniature open lamp one-light industrial luminaire.
- **CONSTRUCTION** 22 ga. cold rolled steel housing. (20 ga. housing available as specified.) End plates are fastened to housing by sheet metal screws to assure rigidity.
- **FINISH** Baked white polyester finish, minimum reflectance 86%. (Powder coated finish available.)
- **REFLECTOR** 24 ga. cold rolled steel reflector standard. Baked white polyester finish, minimum reflectance 86%. Slotted up-light reflector available.
- **WIRING** 120v 60Hz., 277v 60Hz., UNV (universal voltage 120v thru 277v.) or as otherwise specified.
- **TAGS** U.L. Listed. Suitable for damp locations.



PHOTOMETRIC DATA

MXIND100-1-4M-E5

TEST NO.=LA-T0620
 LAMP TYPE=F28T5
 NO. OF LAMP=1
 LUMENS PER LAMP=2900
 WATTS PER LAMP=28
 BALLAST FACTOR=1
 PHOTOMETRY TYPE=C



CANDLEPOWER

ANGLE	END	45	CROSS
0	821	821	821
5	786	796	762
15	781	762	785
25	701	729	745
35	629	672	702
45	528	594	661
55	428	516	568
65	310	401	414
75	197	195	130
85	82	37	27
90	15	7	3
95	5	3	0
105	1	1	0
115	0	0	0
125	0	0	0
135	0	0	0
145	0	0	0
155	0	0	0
165	0	0	0
175	0	0	0
180	0	0	0

ZONAL LUMEN SUMMARY

DEGREES	LUMENS	% LAMP	% FIXTURE
0-30	630	21.7	24.4
0-40	1050	36.2	40.7
0-60	1966	67.8	76.2
0-90	2573	88.7	99.8
90-120	6	0.2	0.2
90-150	6	0.2	0.2
90-180	6	0.2	0.2
0-180	2579	88.9	100.0

Lumen Output = 2579 lumens
 Luminaire Efficiency = 88.9%

SPACING CRITERION

ALONG	ACROSS
1.21	1.32

This space is intentionally left blank.

This space is intentionally left blank.

This space is intentionally left blank.

