



# MINIATURE CROSS SECTION

## MXIND210 SERIES

### Miniature Industrial Luminaire



- 1 or 2-Lamp 28WT5 / 54WT5H0 / T8, Miniature Industrial Luminaire
- 22 Ga. Cold Rolled Steel Housing
- Baked White Polyester Finish
- Screw-On End Caps
- 7" Width 24 Ga. Cold Rolled Steel Reflector
- Reflector Secured by Two Quarter Turn Fasteners
- Suitable for Damp Locations
- Available with:
  - Fluorescent, LED and LED T8 (Internally Driven)
  - Custom Colors
  - Up-Light Reflector
  - Emergency Battery Pack



Photometric Data and IES Files are Available on [www.lalighting.com](http://www.lalighting.com)



**LOS ANGELES LIGHTING MFG. CO.**

10141 OLNEY ST. / EL MONTE, CA 91731

TEL : 626-454-8300 FAX : 626-454-8399

[www.lalighting.com](http://www.lalighting.com)

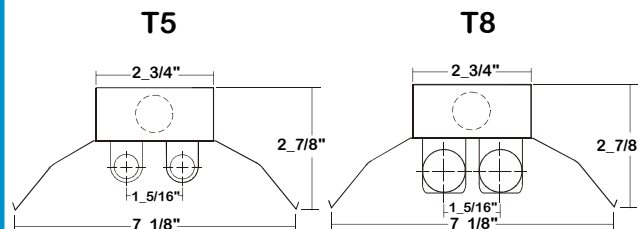
# MINIATURE CROSS SECTION - Fluorescent

LED Equivalent Products Available on [www.lalighting.com](http://www.lalighting.com)



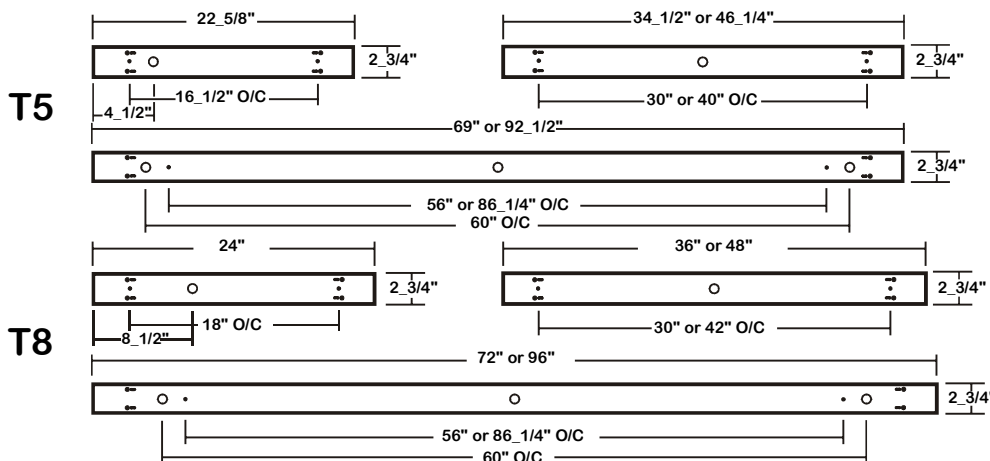
## MXIND210 SERIES

### CROSS SECTION



### BACK PLATE

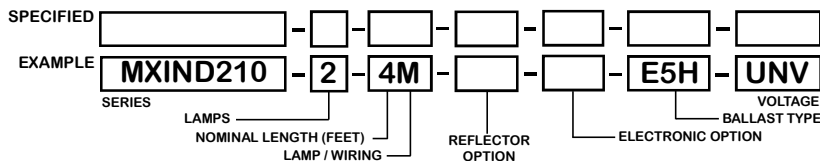
- V-HOOK
- 3/16" MTG. K.O.
- 7/8" K.O.



### CATALOG NUMBER

	NOMINAL LENGTH	TOTAL LAMPS		NOMINAL LENGTH	TOTAL LAMPS		NOMINAL LENGTH	TOTAL LAMPS		NOMINAL LENGTH	TOTAL LAMPS
MXIND210-1-2M	2'	1	MXIND210-2-2M	2'	2	MXIND210-1-2R	2'	1	MXIND210-2-2R	2'	2
MXIND210-1-3M	3'	1	MXIND210-2-3M	3'	2	MXIND210-1-3R	3'	1	MXIND210-2-3R	3'	2
MXIND210-1-4M	4'	1	MXIND210-2-4M	4'	2	MXIND210-1-4R	4'	1	MXIND210-2-4R	4'	2
MXIND210-1-6MT	6'	2	MXIND210-2-6MT	6'	4	MXIND210-1-6RT	6'	2	MXIND210-2-6RT	6'	4
MXIND210-1-8MT	8'	2	MXIND210-2-8MT	8'	4	MXIND210-1-8RT	8'	2	MXIND210-2-8RT	8'	4

### ORDERING GUIDE



**NOTE: LAMP/WIRING\***  
 M = Miniature Bi-Pin T5  
 R = Miniature Bi-Pin T8  
 MT = Miniature Bi-Pin T5, Tandem Wiring  
 RT = Miniature Bi-Pin T8, Tandem Wiring

### OPTIONS AND ACCESSORIES

REFLECTOR OPTIONS	SUFFIX	ELECTRICAL OPTIONS	SUFFIX	BALLAST OPTIONS	SUFFIX	ACCESSORIES	CAT. No.
10% Slotted Reflector	S10	Emergency Battery Pack	BP*	Electronic Ballast T5	E5*	Fixture Suspension System	*
Specular Aluminum Reflector (95%)	SR	External Line Fusing (HLR/GLR)	ELF	Electronic Ballast T5HO	E5H*		
White Aluminum Reflector (90%)	WR	Plug-In Branch Wiring Connector System	*	Electronic Ballast T8	E8*		

\*See Appropriate Reference Page

### SPECIFICATIONS

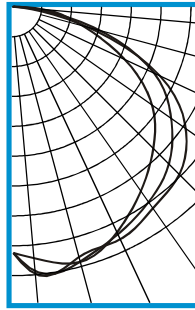
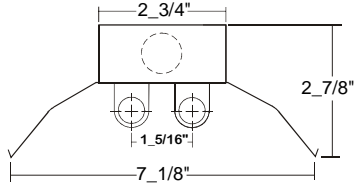
- **TYPE** Miniature open lamp one-light or two-light industrial luminaire.
- **CONSTRUCTION** 22 ga. cold rolled steel housing. (20 ga. housing available as specified.) End plates are fastened to housing by sheet metal screws to assure rigidity. End plates fold down to become channel couplings.
- **FINISH** Baked white polyester finish, minimum reflectance 86%. (Powder coated finish available.)
- **REFLECTOR** 24 ga. cold rolled steel reflector standard. Baked white polyester finish, minimum reflectance 86%. Slotted up-light reflector available.
- **WIRING** 120v 60Hz., 277v 60Hz., UNV (universal voltage 120v thru 277v.) or as otherwise specified.
- **LABELS** U.L. Listed. Suitable for damp locations.



**PHOTOMETRIC DATA**

**MXIND210-2-4M-E5**

TEST NO.=LA-T0871  
 LAMP TYPE=F28T5  
 NO. OF LAMP=2  
 LUMENS PER LAMP=2900  
 WATTS PER LAMP=28  
 BALLAST FACTOR=1  
 PHOTOMETRY TYPE=C



**CANDLEPOWER**

ANGLE	END	45	CROSS
0	1252	1252	1252
5	1285	1353	1368
15	1342	1338	1314
25	1259	1272	1302
35	1137	1207	1246
45	1009	1123	1199
55	860	980	1071
65	620	787	818
75	359	444	382
85	156	95	46
90	22	8	2
95	7	3	0
105	0	0	0
115	0	0	0
125	0	0	0
135	0	0	0
145	0	0	0
155	0	0	0
165	0	0	0
175	0	0	0
180	0	0	0

**ZONAL LUMEN SUMMARY**

DEGREES	LUMENS	% LAMP	% FIXTURE
0-30	1096	18.9	22.6
0-40	1849	31.9	38.1
0-60	3584	61.8	73.9
0-90	4846	83.5	99.9
90-120	6	0.1	0.1
90-150	6	0.1	0.1
90-180	6	0.1	0.1
0-180	4852	83.6	100.0

Lumen Output = 4852 lumens  
 Luminaire Efficiency = 83.6%

**SPACING CRITERION**

ALONG	ACROSS
1.39	1.51

This space is intentionally left blank.

This space is intentionally left blank.

This space is intentionally left blank.

