

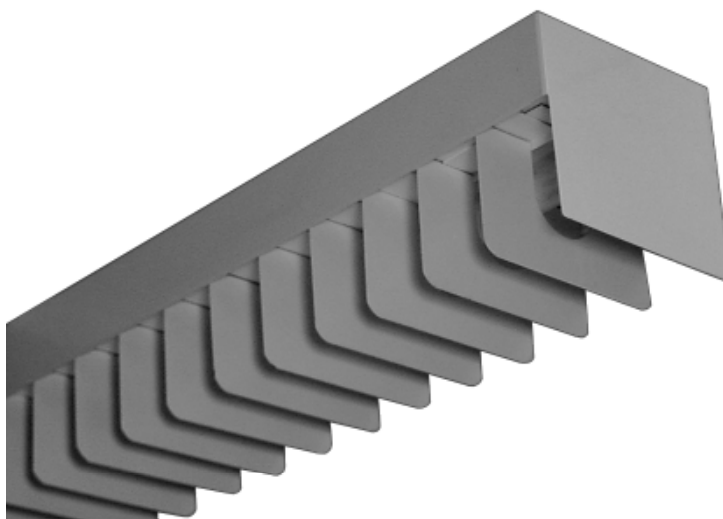


MINIATURE CROSS SECTION

MXLST100 SERIES



Miniature Rectangular Baffled Luminaire



- Retail, Commercial & Institutional Applications
- 1 or 2-Lamp 28WT5 / 54WT5H0
- Welded and Painted After Fabrication
- Row, Surface or Pendant Mountable
- Broad Lighting Distribution
- Available with:
 - Variety of Lenses
 - Emergency Battery Pack



Photometric Data and IES Files are Available on www.lalighting.com

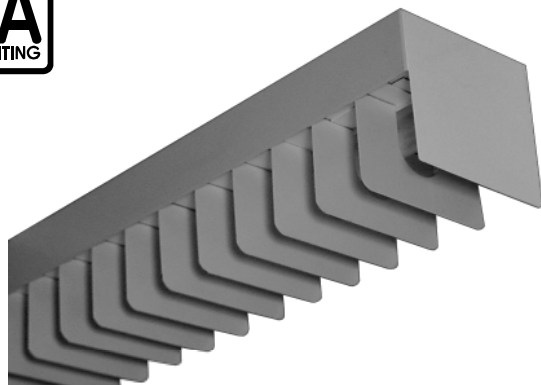


LOS ANGELES LIGHTING MFG. CO.

10141 OLNEY ST. / EL MONTE, CA 91731

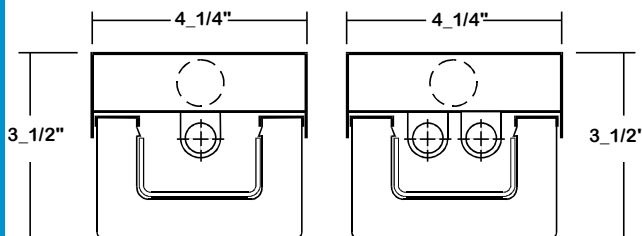
TEL : 626-454-8300 FAX : 626-454-8399

www.lalighting.com



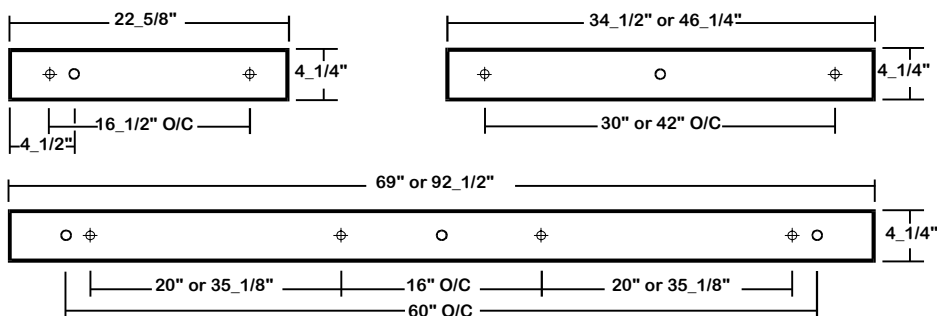
MXLST100 SERIES

CROSS SECTION



BACK PLATE

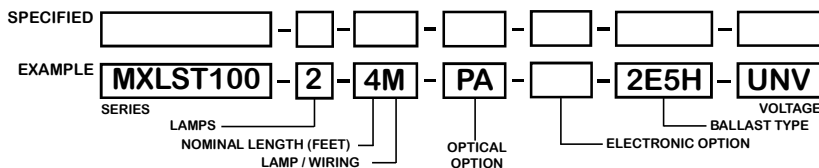
- ⌀ 11/16" STEM MTG. K.O.
- 7/8" K.O.



CATALOG NUMBER

	NOMINAL LENGTH	TOTAL LAMPS		NOMINAL LENGTH	TOTAL LAMPS
MXLST100-1-2M	2'	1	MXLST100-2-2M	2'	2
MXLST100-1-3M	3'	1	MXLST100-2-3M	3'	2
MXLST100-1-4M	4'	1	MXLST100-2-4M	4'	2
MXLST100-1-6MT	6'	2	MXLST100-2-6MT	6'	4
MXLST100-1-8MT	8'	2	MXLST100-2-8MT	8'	4

ORDERING GUIDE



NOTE: LAMP/WIRING*
 M= Miniature Bi-Pin T5
 MT= Miniature Bi-Pin T5, Tandem Wiring

OPTIONS AND ACCESSORIES

OPTICAL OPTIONS

- Clear Prismatic Acrylic
- Flat White Acrylic

SUFFIX
 PA
 FWA

ELECTRICAL OPTIONS

- Emergency Battery Pack
- External Line Fusing (HLR/GLR)

SUFFIX
 BP*
 ELF

BALLAST OPTIONS

- Electronic Ballast T5
- Electronic Ballast T5HO
- Electronic T5HO Step Dimming

SUFFIX
 E5
 E5H
 E5HSD

ACCESSORIES

- Fixture Suspension System

CAT. NO.
 *

*See Appropriate Reference Page

SPECIFICATIONS

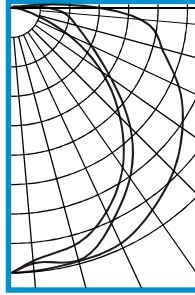
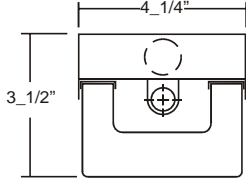
- TYPE** Miniature louvered stack luminaire.
- CONSTRUCTION** 20 ga. cold rolled steel welded housing.
- FINISH** Baked white powder coated finish, minimum reflectance 90%. Painted after fabrication.
- OPTICS** Employing longitudinal shielding only, this stacklite qualifies as an efficient unit for lighting long narrow area. Clear prismatic acrylic or flat white acrylic lens optional.
- WIRING** 120v 60Hz., 277v 60Hz., UNV (universal voltage 120v thru 277v.) or as otherwise specified.
- LABELS** U.L. Listed. Suitable for damp locations.



PHOTOMETRIC DATA

MXLST100-1-4M-E5

TEST NO.=LA-T0625
 LAMP TYPE=F28T5
 NO. OF LAMP=1
 LUMENS PER LAMP=2900
 WATTS PER LAMP=28
 BALLAST FACTOR=1
 PHOTOMETRY TYPE=C



CANDLEPOWER

ANGLE	END	45	CROSS
0	605	605	605
5	580	586	603
15	561	597	599
25	514	542	593
35	443	472	562
45	349	383	525
55	249	275	477
65	139	200	421
75	50	153	356
85	16	119	295
90	6	87	205
95	5	40	95
105	4	13	8
115	3	9	3
125	2	6	2
135	1	4	2
145	1	2	1
155	0	1	0
165	0	0	0
175	0	0	0
180	0	0	0

ZONAL LUMEN SUMMARY

DEGREES	LUMENS	% LAMP	% FIXTURE
0-30	476	16.4	23.4
0-40	783	27.0	38.4
0-60	1387	47.8	68.0
0-90	1952	67.3	95.7
90-120	79	2.7	3.9
90-150	86	3.0	4.2
90-180	87	3.0	4.3
0-180	2038	70.3	100.0

Lumen Output = 2038 lumens
 Luminaire Efficiency = 70.3%

SPACING CRITERION

ALONG	ACROSS
1.17	1.42

This space is intentionally left blank.

This space is intentionally left blank.

This space is intentionally left blank.

