



MINIATURE CROSS SECTION

MXSMS100 SERIES



Miniature Side Mount Strip Luminaire



- T5/T5HO, 1,2 or 3-Lamp Miniature Side Mount Strip Luminaire
- 22 Ga. Cold Rolled Steel Housing
- Baked White Polyester Finish
- Screw-On End Caps
- Cover Secured by Two Quarter Turn Fasteners
- Suitable for Damp Locations
- Available with:
 - Custom Colors
 - Asymmetrical Reflectors
 - Symmetrical Reflectors



Photometric Data and IES Files are Available on www.lalighting.com



LOS ANGELES LIGHTING MFG. CO.

10141 OLNEY ST. / EL MONTE, CA 91731

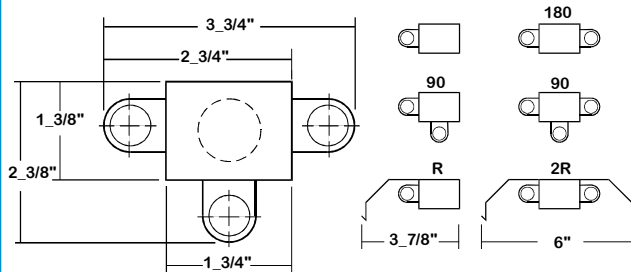
TEL : 626-454-8300 FAX : 626-454-8399

www.lalighting.com



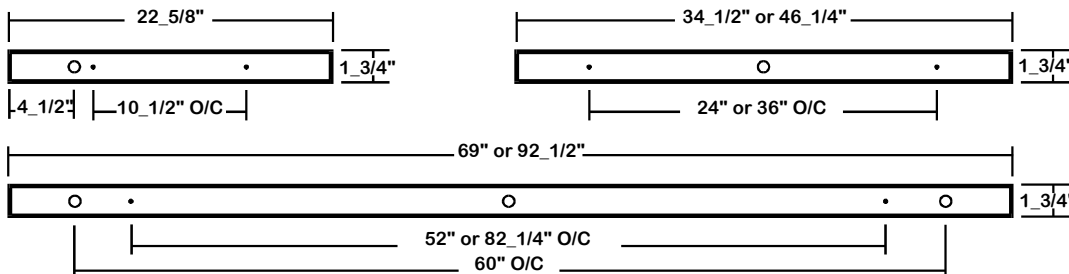
MXSMS100 SERIES

CROSS SECTION



BACK PLATE

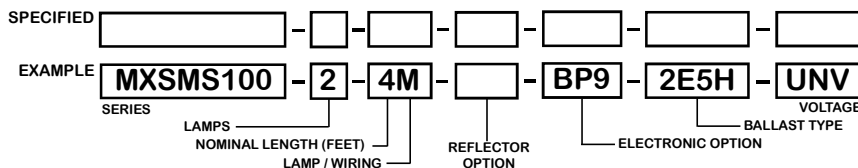
- 3/16" MTG. K.O.
- 7/8" K.O.



CATALOG NUMBER

	NOMINAL LENGTH	LAMP POS.	TOTAL LAMPS		NOMINAL LENGTH	LAMP POS.	TOTAL LAMPS
MXSMS100-1-2M	2'		1	MXSMS109-2-2M	2'	90	2
MXSMS100-1-3M	3'		1	MXSMS109-2-3M	3'	90	2
MXSMS100-1-4M	4'		1	MXSMS109-2-4M	4'	90	2
MXSMS100-1-6MT	6'		2	MXSMS109-2-6MT	6'	90	4
MXSMS100-1-8MT	8'		2	MXSMS109-2-8MT	8'	90	4
MXSMS101-2-2M	2'	180	2	MXSMS109-3-2M	2'	90	3
MXSMS101-2-3M	3'	180	2	MXSMS109-3-3M	3'	90	3
MXSMS101-2-4M	4'	180	2	MXSMS109-3-4M	4'	90	3
MXSMS101-2-6MT	6'	180	4	MXSMS109-3-6MT	6'	90	6
MXSMS101-2-8MT	8'	180	4	MXSMS109-3-8MT	8'	90	6

ORDERING GUIDE



NOTE: LAMP/WIRING*
M = Miniature Bi-Pin T5
MT = Miniature Bi-Pin T5, Tandem Wiring

OPTIONS AND ACCESSORIES

<ul style="list-style-type: none"> ● REFLECTOR OPTIONS 	<ul style="list-style-type: none"> SUFFIX 	<ul style="list-style-type: none"> ● ELECTRICAL OPTIONS 	<ul style="list-style-type: none"> SUFFIX 	<ul style="list-style-type: none"> ● BALLAST OPTIONS 	<ul style="list-style-type: none"> SUFFIX
<ul style="list-style-type: none"> Asymmetrical Reflectors Symmetrical Reflector 	<ul style="list-style-type: none"> R 2R 	<ul style="list-style-type: none"> Emergency Battery Pack External Line Fusing (HLR/GLR) Plug-In Branch Wiring Connector System 	<ul style="list-style-type: none"> BP9 ELF * 	<ul style="list-style-type: none"> Electronic Ballast T5 Electronic Ballast T5HO 	<ul style="list-style-type: none"> E5* E5H*
				<ul style="list-style-type: none"> ● ACCESSORIES 	<ul style="list-style-type: none"> CAT. No.
				<ul style="list-style-type: none"> Fixture Suspension System 	<ul style="list-style-type: none"> *

*See Appropriate Reference Page

SPECIFICATIONS

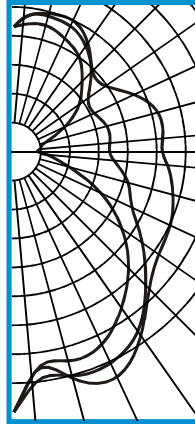
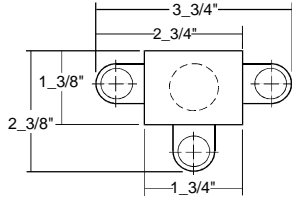
- TYPE: Miniature open lamp channel with reflector available for 1, 2, 3 lamps in various side mount configurations.
- CONSTRUCTION: 22 ga. cold rolled steel housing. (20 ga. housing available as specified.) End plates are fastened to housing by sheet metal screws to assure rigidity.
- FINISH: Baked white polyester finish, minimum reflectance 86%. (Powder coated finish available.)
- REFLECTOR: Optional 24 ga. cold rolled steel asymmetrical or symmetrical reflector. Baked white polyester finish, minimum reflectance 86%.
- WIRING: 120v 60Hz., 277v 60Hz., UNV (universal voltage 120v thru 277v.) or as otherwise specified.
- LABELS: U.L. Listed. Suitable for damp locations.



PHOTOMETRIC DATA

MXSMS109-3-4M-E5

TEST NO.=LA-T0618
 LAMP TYPE=F28T5
 NO. OF LAMP=3
 LUMENS PER LAMP=2900
 WATTS PER LAMP=28
 BALLAST FACTOR=1
 PHOTOMETRY TYPE=C



CANDLEPOWER

ANGLE	END	45	CROSS
0	1329	1329	1329
5	1140	1190	1139
15	1105	1184	1203
25	1076	1184	1262
35	961	1108	1132
45	826	950	978
55	667	796	905
65	480	663	881
75	281	601	839
85	165	512	785
90	120	487	757
95	131	491	761
105	158	491	761
115	274	456	682
125	402	462	579
135	490	557	570
145	583	645	661
155	629	700	731
165	663	712	728
175	652	692	689
180	637	637	637

ZONAL LUMEN SUMMARY

DEGREES	LUMENS	% LAMP	% FIXTURE
0-30	988	11.4	12.0
0-40	1665	19.1	20.3
0-60	3092	35.5	37.7
0-90	4903	56.4	59.7
90-120	1476	17.0	18.0
90-150	2722	31.3	33.2
90-180	3306	38.0	40.3
0-180	8209	94.4	100.0

Lumen Output = 8209 lumens
 Luminaire Efficiency = 94.4%

SPACING CRITERION

ALONG	ACROSS
1.15	1.33

This space is intentionally left blank.

This space is intentionally left blank.

This space is intentionally left blank.

