



MINIATURE CROSS SECTION

MXSTR100 SERIES



Miniature 1-Lamp Strip Luminaire



- One Lamp 28WT5 / 54WT5HO / T8
- 22 Ga. Cold Rolled Steel Housing
- Baked White Polyester Finish
- Screw-On End Caps
- Cover Secured by Two Quarter Turn Fasteners
- Suitable for Damp Locations
- Available with:
 - Fluorescent, LED and LED T8 (Internally Driven)
 - Custom Colors
 - Asymmetrical Reflectors



Photometric Data and IES Files are Available on www.lalighting.com



LOS ANGELES LIGHTING MFG. CO.

10141 OLNEY ST. / EL MONTE, CA 91731

TEL : 626-454-8300 FAX : 626-454-8399

www.lalighting.com

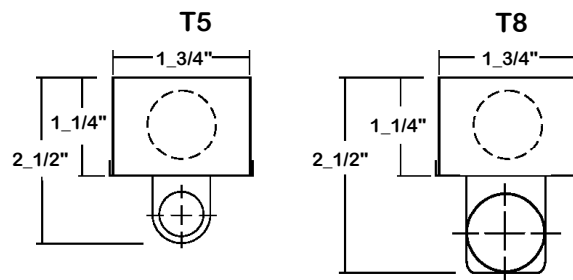
MINIATURE CROSS SECTION - Fluorescent

LED Equivalent Products Available on www.lalighting.com



MXSTR100 SERIES

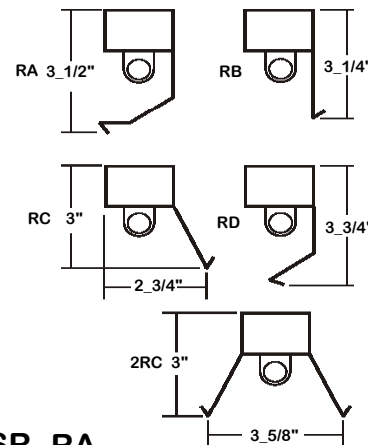
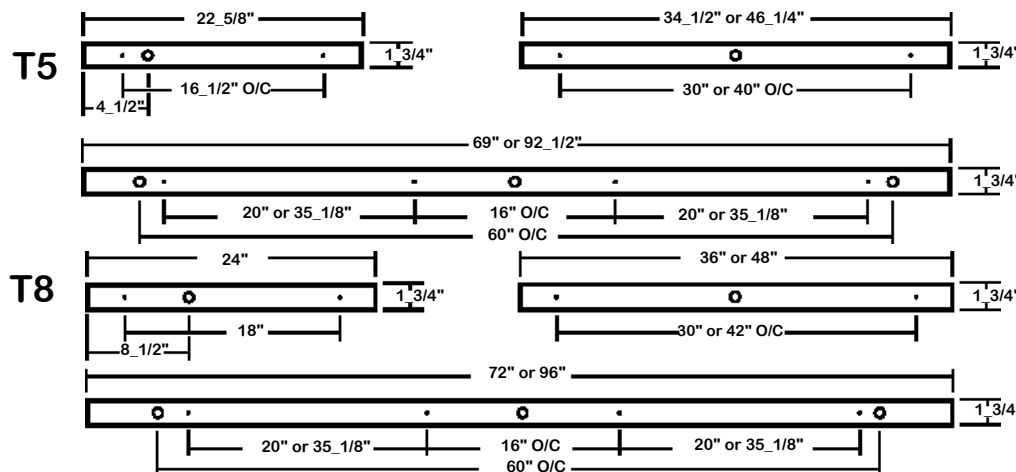
CROSS SECTION



BACK PLATE

• 3/16" MTG. K.O. ○ 7/8" K.O.

REFLECTOR INFORMATION



CATALOG NUMBER

CATALOG NUMBER	NOMINAL LENGTH	TOTAL LAMPS	CATALOG NUMBER	NOMINAL LENGTH	TOTAL LAMPS
MXSTR100-1-2M	2'	1	MXSTR100-1-2R	2'	1
MXSTR100-1-3M	3'	1	MXSTR100-1-3R	3'	1
MXSTR100-1-4M	4'	1	MXSTR100-1-4R	4'	1
MXSTR100-1-6MT	6'	2	MXSTR100-1-6RT	6'	2
MXSTR100-1-8MT	8'	2	MXSTR100-1-8RT	8'	2

SR RA

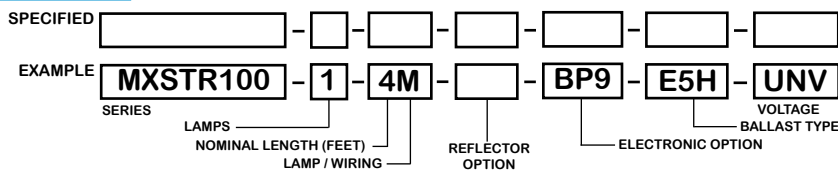
STYLE

- RA - 3-Bend asymmetrical Refl.
- RB - 90° 1-Bend asymmetrical Refl.
- RC - 45° 1-Bend asymmetrical Refl.
- RD - 2-Bend asymmetrical Refl.
- 2RC - 45° symmetrical Refl.

MATERIAL

Leave blank for white steel
SR - Specular aluminum (95%)

ORDERING GUIDE



NOTE: LAMP/WIRING*
M = Miniature Bi-Pin T5
R = Miniature Bi-Pin T8
MT = Miniature Bi-Pin T5, Tandem Wiring
RT = Miniature Bi-Pin T8, Tandem Wiring

OPTIONS AND ACCESSORIES

● **ELECTRICAL OPTIONS**

- Emergency Battery Pack
(Must be remote mounted for 2' version)
- External Line Fusing (HLR/GLR)
- Plug-In Branch Wiring Connector System

SUFFIX

- BP9
- ELF
- *

● **BALLAST OPTIONS**

- Electronic Ballast T5
- Electronic Ballast T5HO
- Electronic Ballast T8

SUFFIX

- E5*
- E5H*
- E8*

● **ACCESSORIES**

- Fixture Suspension System

CAT. No.

*

*See Appropriate Reference Page

SPECIFICATIONS

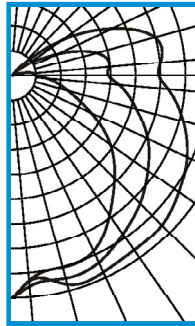
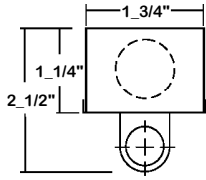
- **TYPE** Miniature open lamp one-light channel.
- **CONSTRUCTION** 22 ga. cold rolled steel housing. (20 ga. housing available as specified.) End plates are fastened to housing by sheet metal screws to assure rigidity. End plates fold down to become channel couplings.
- **FINISH** Baked white polyester finish, minimum reflectance 86%. (Powder coated finish available.)
- **REFLECTOR** Optional 24 ga. cold rolled steel asymmetrical reflector. Baked white polyester finish, minimum reflectance 86%.
- **WIRING** 120v 60Hz., 277v 60Hz., UNV (universal voltage 120v thru 277v.) or as otherwise specified.
- **LABELS** U.L. Listed. Suitable for damp locations.



PHOTOMETRIC DATA

MXSTR100-1-4M-E5

TEST NO.=LA-T0616
 LAMP TYPE=F28T5
 NO. OF LAMP=1
 LUMENS PER LAMP=2900
 WATTS PER LAMP=28
 BALLAST FACTOR=1
 PHOTOMETRY TYPE=C



CANDLEPOWER

ANGLE	END	45	CROSS
0	497	497	497
5	456	470	458
15	442	468	482
25	430	458	482
35	376	429	474
45	320	401	470
55	264	366	451
65	190	331	427
75	126	284	392
85	76	237	346
90	51	212	323
95	47	215	329
105	15	195	328
115	1	119	248
125	0	47	144
135	0	6	45
145	0	0	0
155	0	0	0
165	0	0	0
175	0	0	0
180	0	0	0

ZONAL LUMEN SUMMARY

DEGREES	LUMENS	% LAMP	% FIXTURE
0-30	388	13.4	14.2
0-40	656	22.6	24.0
0-60	1289	44.5	47.2
0-90	2131	73.5	78.1
90-120	534	18.4	19.6
90-150	599	20.6	21.9
90-180	599	20.6	21.9
0-180	2729	94.1	100.0

Lumen Output = 2729 lumens
 Luminaire Efficiency = 94.1%

SPACING CRITERION

ALONG	ACROSS
1.21	1.46

This space is intentionally left blank.

This space is intentionally left blank.

This space is intentionally left blank.

