



MINIATURE CROSS SECTION

MXSTR210 SERIES

Miniature Strip Luminaire



- T5 / T5HO / T8, 1 or 2-Lamp Miniature Strip Luminaire
- 22 Ga. Cold Rolled Steel Housing
- Baked White Polyester Finish
- Screw-On End Caps
- Cover Secured by Two Quarter Turn Fasteners
- Suitable for Damp Locations
- Available with:
 - Fluorescent and LED T8 (Internally Driven)
 - Custom Colors
 - Asymmetrical Reflectors



Photometric Data and IES Files are Available on www.lalighting.com



LOS ANGELES LIGHTING MFG. CO.

10141 OLNEY ST. / EL MONTE, CA 91731

TEL : 626-454-8300 FAX : 626-454-8399

www.lalighting.com

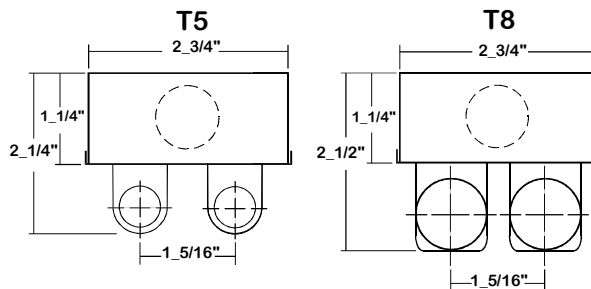
MINIATURE CROSS SECTION - Fluorescent

LED Equivalent Products Available on www.lalighting.com



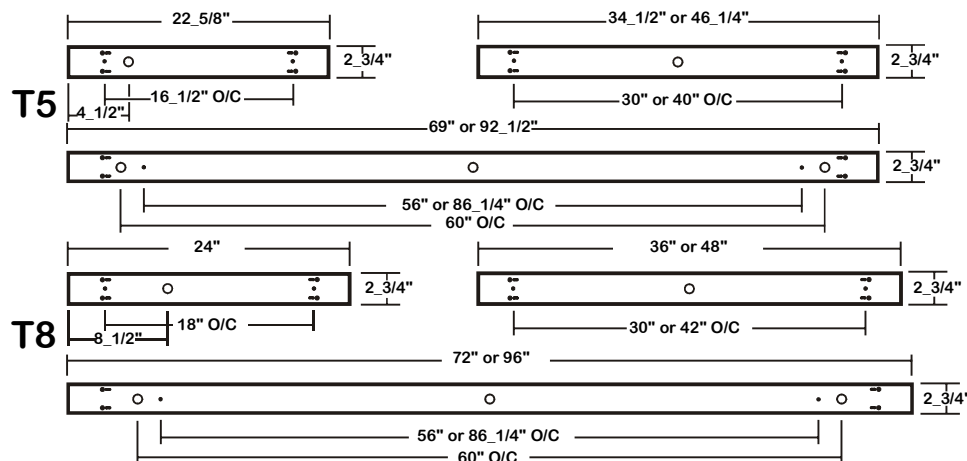
MXSTR210 SERIES

CROSS SECTION

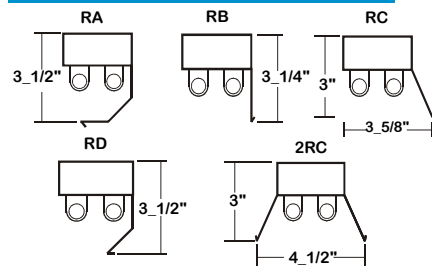


BACK PLATE

- V-HOOK
- 3/16" MTG. K.O.
- 7/8" K.O.



REFLECTOR INFORMATION



SR RA

STYLE

- RA - 3-Bend asymmetrical Reflector
- RB - 90° 1-Bend asymmetrical Reflector
- RC - 45° 1-Bend asymmetrical Reflector
- RD - 2-Bend asymmetrical Reflector
- 2RC - 45° symmetrical Reflector

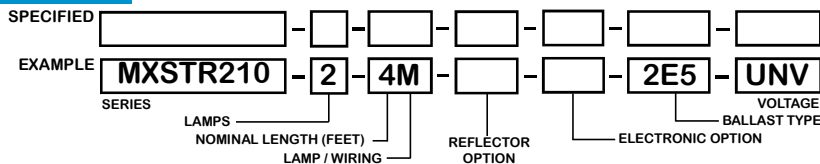
MATERIAL

Leave blank for white steel
SR - Specular aluminum (95%)

CATALOG NUMBER

	NOMINAL LENGTH	TOTAL LAMPS		NOMINAL LENGTH	TOTAL LAMPS		NOMINAL LENGTH	TOTAL LAMPS		NOMINAL LENGTH	TOTAL LAMPS
MXSTR210-1-2M	2'	1	MXSTR210-2-2M	2'	2	MXSTR210-1-2R	2'	1	MXSTR210-2-2R	2'	2
MXSTR210-1-3M	3'	1	MXSTR210-2-3M	3'	2	MXSTR210-1-3R	3'	1	MXSTR210-2-3R	3'	2
MXSTR210-1-4M	4'	1	MXSTR210-2-4M	4'	2	MXSTR210-1-4R	4'	1	MXSTR210-2-4R	4'	2
MXSTR210-1-6MT	6'	2	MXSTR210-2-6MT	6'	4	MXSTR210-1-6RT	6'	2	MXSTR210-2-6RT	6'	4
MXSTR210-1-8MT	8'	2	MXSTR210-2-8MT	8'	4	MXSTR210-1-8RT	8'	2	MXSTR210-2-8RT	8'	4

ORDERING GUIDE



NOTE: LAMP/WIRING*
 M = Miniature Bi-Pin T5
 R = Miniature Bi-Pin T8
 MT = Miniature Bi-Pin T5, Tandem Wiring
 RT = Miniature Bi-Pin T8, Tandem Wiring

OPTIONS AND ACCESSORIES

ELECTRICAL OPTIONS

- Emergency Battery Pack
- External Line Fusing (HLR/GLR)
- Plug-In Branch Wiring Connector System

SUFFIX
BP*
ELF
*

BALLAST OPTIONS*

- Electronic T5
- Electronic T5HO
- Electronic T8 Instant Start
- Electronic T8 Rapid Start
- Electronic T8HO

SUFFIX
xE5
xE5H
xE8I
xE8R
xE8H

x = Number of Lamps per Ballast

ACCESSORIES

- Fixture Suspension System

CAT. No.

*

* Refer to www.lalighting.com/resources for more information

SPECIFICATIONS

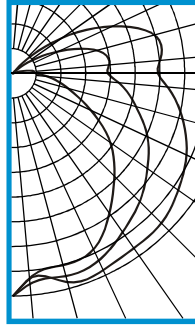
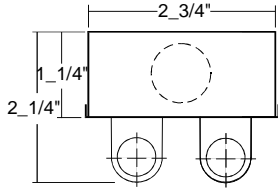
- TYPE** Miniature open lamp one-light or two-light channel.
- CONSTRUCTION** 22 ga. cold rolled steel housing. (20 ga. housing available as specified.) End plates are fastened to housing by sheet metal screws to assure rigidity. End plates fold down to become channel couplings.
- FINISH** Baked white polyester finish, minimum reflectance 86%. (Powder coated finish available.)
- REFLECTOR** Optional 24 ga. cold rolled steel asymmetrical reflector. Baked white polyester finish, minimum reflectance 86%.
- WIRING** 120v 60Hz., 277v 60Hz., UNV (universal voltage 120v thru 277v.) or as otherwise specified.
- LABELS** U.L. Listed. Suitable for damp locations.



PHOTOMETRIC DATA

MXSTR210-2-4M-E5

TEST NO.=LA-T0867
 LAMP TYPE=F28T5
 NO. OF LAMP=2
 LUMENS PER LAMP=2900
 WATTS PER LAMP=28
 BALLAST FACTOR=1
 PHOTOMETRY TYPE=C



CANDLEPOWER

ANGLE	END	45	CROSS
0	1050	1050	1050
5	1047	1054	1092
15	1014	1058	1047
25	944	1021	1072
35	868	975	1047
45	741	894	1016
55	601	793	922
65	439	679	830
75	304	534	653
85	155	353	483
90	73	237	349
95	63	295	438
105	28	244	410
115	4	161	301
125	0	90	200
135	0	31	105
145	0	2	24
155	0	0	0
165	0	0	0
175	0	0	0
180	0	0	0

ZONAL LUMEN SUMMARY

DEGREES	LUMENS	% LAMP	% FIXTURE
0-30	867	14.9	16.7
0-40	1474	25.4	28.4
0-60	2857	49.3	55.1
0-90	4380	75.5	84.5
90-120	685	11.8	13.2
90-150	807	13.9	15.5
90-180	807	13.9	15.5
0-180	5187	89.4	100.0

Lumen Output = 5187 lumens
 Luminaire Efficiency = 89.4%

SPACING CRITERION

ALONG	ACROSS
1.29	1.52

