



BAYLIGHTER™

PBL520 SERIES

Medium / High Bay Luminaire



- Medium / High Bay Compact Fluorescent Luminaire
- Auditorium, Commercial, Retail Applications
- Pendant Mounted
- Die Cast Center Hub For 3/4" Pipe
- 40W, 50W, 55W Biax® Lamp
- Powder Coated Finish / Painted After Fabrication
- 95% Enhanced Specular Aluminum Reflectors
- Frame & Lens Assembly With Safety Cables
- 1½" Deep Semi-specular 9-Cell Louver
- Up To 6 Levels Switching
- Available with:
 - 90% White Aluminum Reflectors
 - Emergency Battery Pack
 - Sensor



Photometric Data and IES Files are Available on www.lalighting.com



LOS ANGELES LIGHTING MFG. CO.

10141 OLNEY ST. / EL MONTE, CA 91731

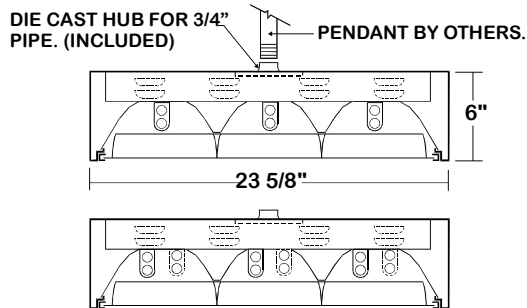
TEL : 626-454-8300 FAX : 626-454-8399

www.lalighting.com



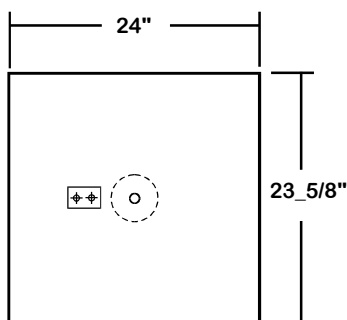
PBL520 SERIES

CROSS SECTION



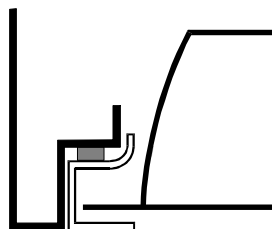
BACK PLATE

- 3/4" HUB
- ACCESS PLATE



DOOR FRAME INFORMATION

- CROSS SECTION



FS W

FINISHES

- W - White Enamel
- B - Black Enamel

STYLES

- FS - Flat Steel

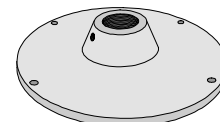
CATALOG NUMBER

CATALOG NUMBER	NOMINAL WIDTH X LENGTH	TOTAL LAMPS
PBL520-3-2B	2' X 2'	3
PBL520-6-2B	2' X 2'	6

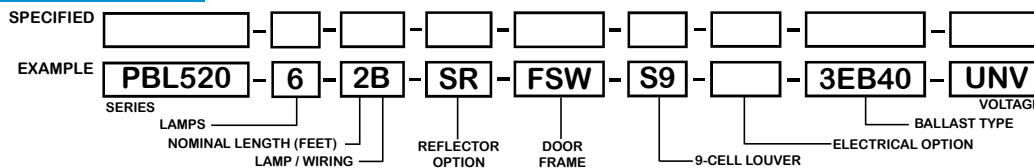
HUB FOR 3/4" PIPE

- Each set consists of:
- One Hub .
 - 8' cable, one end free and the other end secured within fixture.
 - Self-locking device secures the free end to ceiling member.
- *Please see Page REF-5 for mounting detail.

Aluminum die cast hub for 3/4" pipe with safety cable set.



ORDERING GUIDE



NOTE: LAMP/WIRING*
B= Compact Twin Tube

OPTIONS AND ACCESSORIES

REFLECTOR OPTIONS

- Specular Aluminum Reflector (95%)
- White Aluminum Reflector (90%)

SUFFIX

- SR
- WR

ELECTRICAL OPTIONS

- Emergency Battery Pack
- External Line Fusing (HLR/GLR)
- Radio Interference Filters
- Motion Sensor

SUFFIX

- BP*
- ELF
- RIF
- MS

BALLAST OPTIONS

- Electronic 40W Compact Twin Tube
- Electronic 50W Compact Twin Tube
- Electronic 55W Compact Twin Tube

SUFFIX

- EB40
- EB50
- EB55

*See appropriate reference page

SPECIFICATIONS

- **TYPE** Pendant mounted, general area luminaire for high bay / low bay applications.
- **CONSTRUCTION** 20 gauge die formed cold rolled steel housing with hub for 3/4" pipe. Welded construction with louvered vents on each side for heat removal.
- **FINISH** Baked white powder coated finish, minimum reflectance 90%, painted after fabrication.
- **REFLECTOR** Enhanced aluminum reflectors, 95% reflectance.
- **DOOR FRAME** 20 gauge cold rolled steel in various finishes. T-hinge, positive spring loaded latch. Safety cables attached.
- **OPTICS** 1_1/2" deep semi-specular parabolic 9 cells louver standard.
- **SAFETY CABLE** 1/8" safety cable allows attachment to ceiling member at a maximum of 72" from top of fixture. Supplied with a self-locking grip.
- **WIRING** 120v 60Hz., 277v 60Hz., UNV (universal voltage 120v thru 277v.) or as otherwise specified.
- **LABELS** Up to 6 levels of switching available as specified.
- **OTHER** U.L. Listed. Suitable for damp locations.



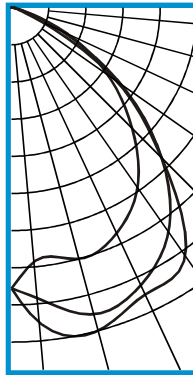
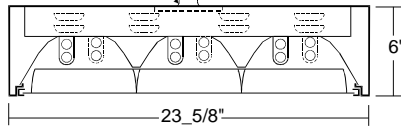
PHOTOMETRIC DATA

PBL520-6-2B-SR-FSW-S9-EB40

TEST NO.=LA-T0435-1
 LAMP TYPE=F40BX
 NO. OF LAMP=6
 LUMENS PER LAMP=3150
 WATTS PER LAMP=40
 BALLAST FACTOR=1
 PHOTOMETRY TYPE=C



DIE CAST HUB FOR 3/4" PIPE. (INCLUDED) PENDANT BY OTHERS



CANDLEPOWER

ANGLE	END	45	CROSS
0	4800	4800	4800
5	4364	1982	5399
15	4446	5428	5718
25	4255	5233	5410
35	3757	4681	5180
45	2917	3631	3628
55	2016	2293	2205
65	1046	938	549
75	207	181	110
85	76	53	19
90	2	3	1
95	0	0	0
105	0	0	0
115	0	0	0
125	0	0	0
135	0	0	0
145	0	0	0
155	0	0	0
165	0	0	0
175	0	0	0
180	0	0	0

ZONAL LUMEN SUMMARY

DEGREES	LUMENS	% LAMP	% FIXTURE
0-30	4289	22.7	33.3
0-40	7163	37.9	55.5
0-60	11812	62.5	91.6
0-90	12895	68.2	100.0
90-120	1	0.0	0
90-150	1	0.0	0
90-180	1	0.0	0
0-180	12895	68.2	100.0

Lumen Output = 12895 lumens
 Luminaire Efficiency = 68.2%

SPACING CRITERION

ALONG	ACROSS
1.24	1.52

This space is intentionally left blank.

This space is intentionally left blank.

This space is intentionally left blank.

