



# OPEN COMMERCIAL

## SMS100 SERIES

### Side Mount Strip



- 1, 2 or 3 Lamp Side Mount Strip
- 22 Ga. Cold Rolled Steel Housing
- Baked White Polyester Finish
- Screw-On End Caps
- Cover Secured by Two Quarter Turn Fasteners
- Suitable for Damp Locations
- Available with:
  - Fluorescent, LED and LED T8 (Internally Driven)
  - 22 ga. Cold Rolled Steel Top Reflector
  - Emergency Battery Pack
  - Switch



Photometric Data and IES Files are Available on [www.lalighting.com](http://www.lalighting.com)



**LOS ANGELES LIGHTING MFG. CO.**

10141 OLNEY ST. / EL MONTE, CA 91731

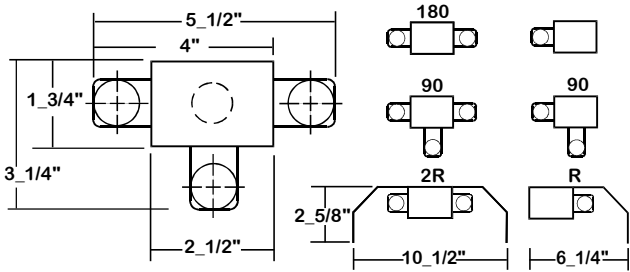
TEL : 626-454-8300 FAX : 626-454-8399

[www.lalighting.com](http://www.lalighting.com)



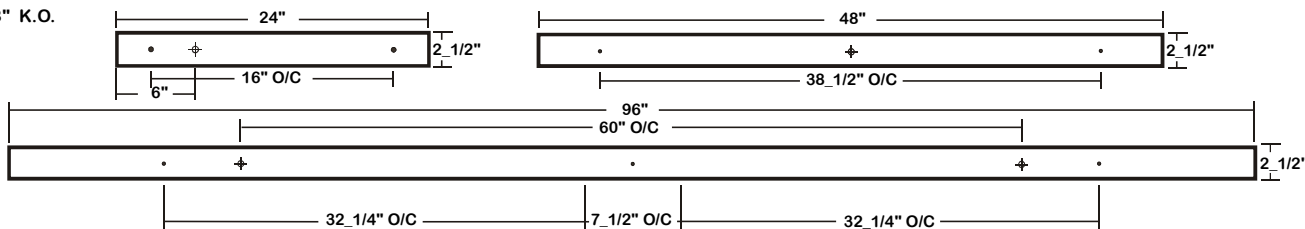
# SMS100 SERIES

## CROSS SECTION



## BACK PLATE

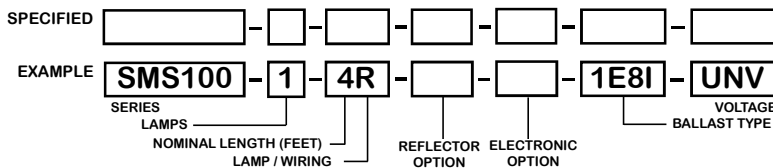
- 3/16" MTG. HOLE
- ⊕ 7/8" K.O.



## CATALOG NUMBER

	NOMINAL LENGTH	TOTAL LAMPS		NOMINAL LENGTH	LAMP POS.	TOTAL LAMPS		NOMINAL LENGTH	LAMP POS.	TOTAL LAMPS
SMS100-1-2R	2'	1	SMS101-2-2R	2'	180	2	SMS109-2-4R	4'	90	2
SMS100-1-3R	3'	1	SMS101-2-3R	3'	180	2	SMS109-2-6RT	6'	90	4
SMS100-1-4R	4'	1	SMS101-2-4R	4'	180	2	SMS109-2-8RT	8'	90	4
SMS100-1-6RT	6'	2	SMS101-2-6RT	6'	180	4	SMS109-3-2R	2'	90	3
SMS100-1-8RT	8'	2	SMS101-2-8RT	8'	180	4	SMS109-3-3R	3'	90	3
			SMS109-2-2R	2'	90	2	SMS109-3-4R	4'	90	3
			SMS109-2-3R	3'	90	2	SMS109-3-6RT	6'	90	6
							SMS109-3-8RT	8'	90	6

## ORDERING GUIDE



## OPTIONS AND ACCESSORIES

### REFLECTOR OPTIONS

- Asymmetrical Reflector
- Symmetrical Reflector

SUFFIX  
R  
2R

### ELECTRICAL OPTIONS

- Emergency Battery Pack
- External Line Fusing (HLR/GLR)
- Radio Interference Filters
- Plug-In Branch Wiring Connector System Switch

SUFFIX  
BP\*  
ELF  
RIF  
PIW\*  
\*

### BALLAST OPTIONS

- Electronic T8
- Electronic Step Dimming T8

SUFFIX  
E8\*  
ESDM8\*

\*See Appropriate Reference Page

## SPECIFICATIONS

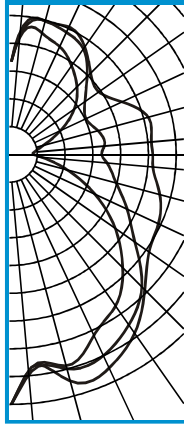
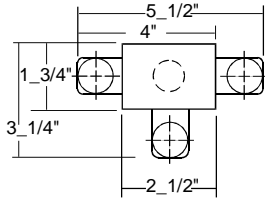
- **TYPE** Open lamp channel available with 1, 2 or 3 lamps in various side mounted configurations.
- **CONSTRUCTION** 22 ga. cold rolled steel housing. (20 ga. housing available as specified.) End plates are fastened to housing by sheet metal screws to assure rigidity.
- **FINISH** Baked white polyester finish standard, minimum reflectance 86%. (Powder coated finish available)
- **WIRING** 120v 60Hz., 277v 60Hz., UNV (universal voltage 120v thru 277v.) or as otherwise specified.
- **LABELS** U.L. Listed. Suitable for damp locations.



**PHOTOMETRIC DATA**

**SMS109-3-4R-E8**

TEST NO.=LA-T0536  
 LAMP TYPE=F032T8  
 NO. OF LAMP=3  
 LUMENS PER LAMP=2900  
 WATTS PER LAMP=32  
 BALLAST FACTOR=1  
 PHOTOMETRY TYPE=C



**CANDLEPOWER**

ANGLE	END	45	CROSS
0	1324	1324	1324
5	1141	1159	1139
15	1157	1177	1247
25	1047	1169	1241
35	969	1092	1145
45	833	977	1000
55	667	796	891
65	482	674	860
75	299	573	813
85	158	507	752
90	117	477	749
95	119	494	744
105	170	476	752
115	279	438	653
125	402	474	571
135	492	566	596
145	562	671	683
155	622	708	740
165	658	728	726
175	644	655	677
180	490	490	490

**ZONAL LUMEN SUMMARY**

DEGREES	LUMENS	% LAMP	% FIXTURE
0-30	983	11.3	12.0
0-40	1658	19.1	20.3
0-60	3098	35.6	37.9
0-90	4881	56.1	59.7
90-120	1447	16.6	17.7
90-150	2714	31.2	33.2
90-180	3299	37.9	40.3
0-180	8180	94.0	100.0

Lumen Output = 8180 lumens  
 Luminaire Efficiency = 94.0%

**SPACING CRITERION**

ALONG	ACROSS
1.13	1.34

This space is intentionally left blank.

This space is intentionally left blank.

This space is intentionally left blank.

