



OPEN COMMERCIAL

SMS100 SERIES Side Mount Strip



- 1, 2 or 3 Lamp Side Mount Strip
- 22 Ga. Cold Rolled Steel Housing
- Baked White Polyester Finish
- Screw-On End Caps
- Cover Secured by Two Quarter Turn Fasteners
- Suitable for Damp Locations
- Available with:
 - Fluorescent, LED and LED T8 (Internally Driven)
 - 22 ga. Cold Rolled Steel Top Reflector
 - Emergency Battery Pack
 - Switch



Photometric Data and IES Files are Available on www.lalighting.com



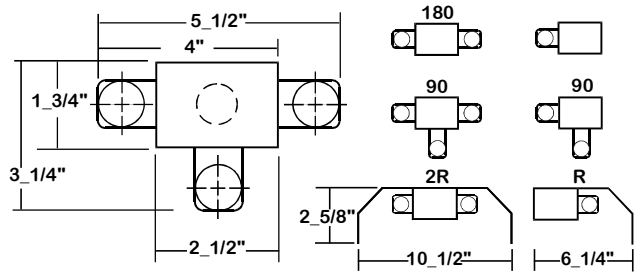
LOS ANGELES LIGHTING MFG. CO.
 10141 OLNEY ST. / EL MONTE, CA 91731
TEL : 626-454-8300 FAX : 626-454-8399
www.lalighting.com

OPEN COMMERCIAL - LED T8 (Internally Driven)



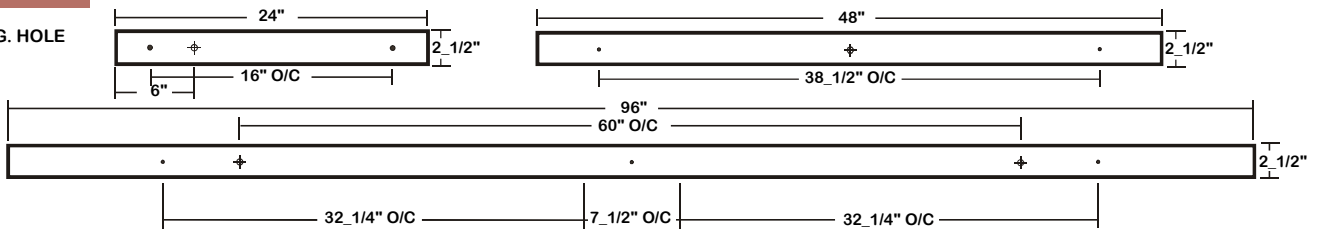
SMS100 SERIES - LED T8

CROSS SECTION



BACK PLATE

- 3/16" MTG. HOLE
- 7/8" K.O.

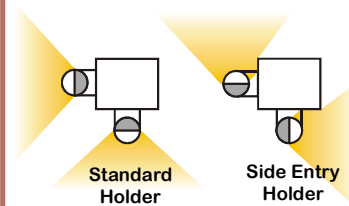


CATALOG NUMBER

CATALOG NUMBER	NOMINAL LENGTH	LAMP POS.	TOTAL MODULES
SMS100-1-2Lx	2'		1
SMS100-1-4Lx	4'		1
SMS100-1-8LxT	8'		2
SMS101-2-2Lx	2'	180	2
SMS101-2-4Lx	4'	180	2
SMS101-2-8LxT	8'	180	4
SMS109-2-2Lx	2'	90	2
SMS109-2-4Lx	4'	90	2
SMS109-2-8LxT	8'	90	4
SMS109-3-2Lx	2'	90	3
SMS109-3-4Lx	4'	90	3
SMS109-3-8LxT	8'	90	6

Electrical Option SEH - Side Entry Holders

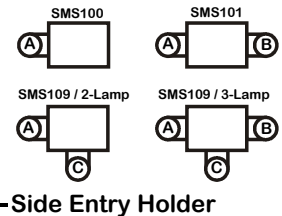
- Rotary locking side entry holders that allow specified LED module in 90° position after installed.



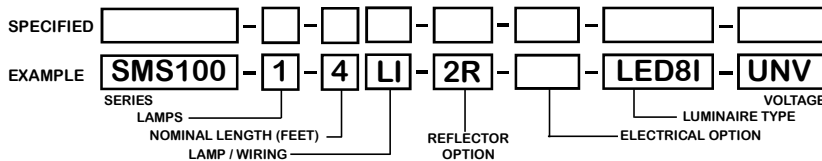
SEH / A

Location

Please specify location of SEH to be installed, Multiple locations ok.



ORDERING GUIDE



OPTIONS AND ACCESSORIES

- REFLECTOR OPTIONS
 - Asymmetrical Reflector SUFFIX R
 - Symmetrical Reflector SUFFIX 2R
- ELECTRICAL OPTIONS
 - LED Luminaire ON/OFF Safety Switch SUFFIX TS2
 - Side Entry Holders SUFFIX SEH/**

**Specify location

LAMP / WIRING

LI = LED T8 internal driver light tube.
 Both ends powered.
 Shunted sockets used.



LR = LED T8 internal driver light tube.
 Single end powered.
 Non-shunted sockets used.



SPECIFICATIONS

- TYPE: Open lamp channel available with 1, 2 or 3 lamps in various side mounted configurations, for LED T8 internally driven light tube(s)**.
- CONSTRUCTION: 22 ga. cold rolled steel housing. (20 ga. housing available as specified.) End plates are fastened to housing by sheet metal screws to assure rigidity.
- FINISH: Baked white polyester finish, minimum reflectance 86%. (Powder coated finish available.)
- WIRING: Operate LED T8 internally driven light tube(s)**.
- LABELS: Suitable for damp locations.

** Lamp(s) by others.

