

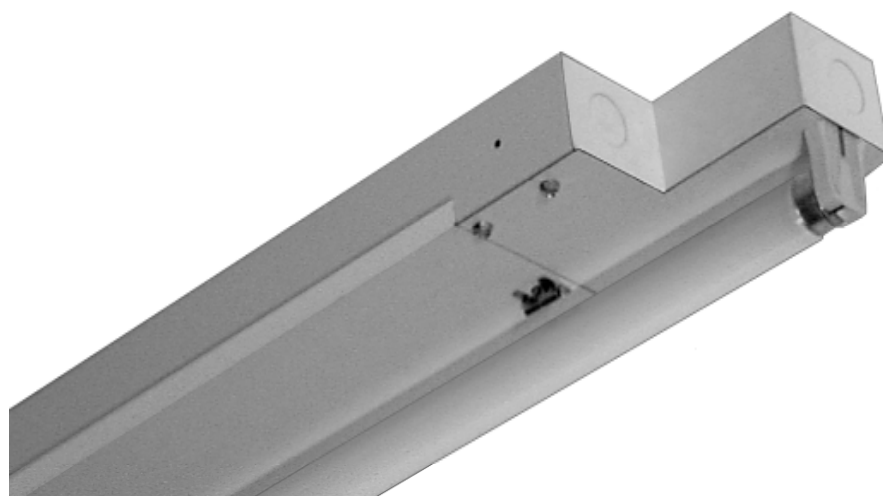


OPEN COMMERCIAL

STG100-1 SERIES



One-Light Staggered Strip Luminaire



- One-Light Staggered Strip Luminaire
- 3" Overlap
- 22 Ga. Cold Rolled Steel Housing
- Baked White Polyester Finish
- Screw-On End Caps
- Cover Secured by Two Quarter Turn Fasteners
- Suitable for Damp Locations
- Available with:
 - Fluorescent, LED and LED T8 (Internally Driven)
 - Asymmetrical Reflectors
 - Emergency Battery Pack



Photometric Data and IES Files are Available on www.lalighting.com

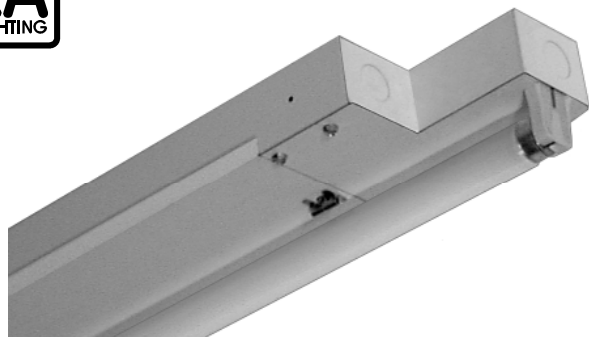


LOS ANGELES LIGHTING MFG. CO.

10141 OLNEY ST. / EL MONTE, CA 91731

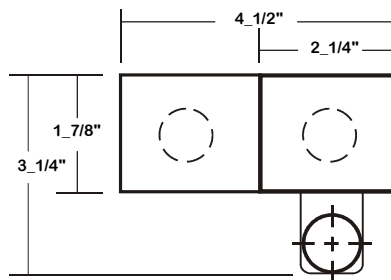
TEL : 626-454-8300 FAX : 626-454-8399

www.lalighting.com



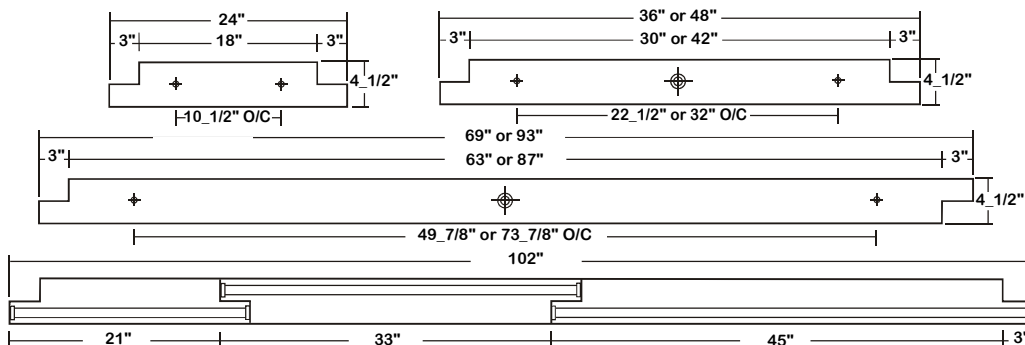
STG100-1 SERIES

CROSS SECTION



BACK PLATE

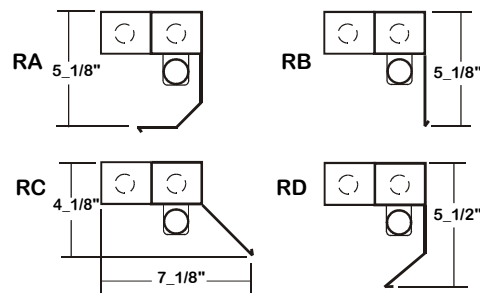
- 7/8" OFFSET K.O.
- 2" K.O.



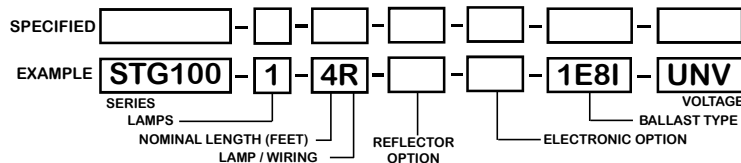
CATALOG NUMBER

| | NOMINAL LENGTH | TOTAL LAMPS | | NOMINAL LENGTH | TOTAL LAMPS |
|--------------|----------------|-------------|---------------|----------------|-------------|
| STG100-1-2R | 2' | 1 | STG100-1-4S | 4' | 1 |
| STG100-1-3R | 3' | 1 | STG100-1-6S | 6' | 1 |
| STG100-1-4R | 4' | 1 | STG100-1-8S | 8' | 1 |
| STG100-1-6RT | 6' | 2 | STG100-1-16ST | 16' | 2 |
| STG100-1-8RT | 8' | 2 | STG100-1-4H | 4' | 1 |
| | | | STG100-1-6H | 6' | 1 |
| | | | STG100-1-8H | 8' | 1 |
| | | | STG100-1-16HT | 16' | 2 |

REFLECTOR INFORMATION



ORDERING GUIDE



NOTE: LAMP/WIRING*
 R = Medium Bi-Pin T8 RT = Medium Bi-Pin T8, Tandem Wiring
 S = Slimline ST = Slimline, Tandem Wiring
 H = High Output (800MA) HT = High Output, Tandem Wiring

SR RA

STYLE

- RA - 3-Bend asymmetrical Refl.
- RB - 90° 1-Bend asymmetrical Refl.
- RC - 45° 1-Bend asymmetrical Refl.
- RD - 2-Bend asymmetrical Refl.

MATERIAL

Leave blank for white steel
 SR - Specular aluminum (95%)

OPTIONS AND ACCESSORIES

ELECTRICAL OPTIONS

- Emergency Battery Pack
- External Line Fusing (HLR/GLR)
- Radio Interference Filters
- Plug-In Branch Wiring Connector System

SUFFIX

- BP*
- ELF
- RIF
- PIW

BALLAST OPTIONS

- Electronic T8
- Electronic Step Dimming T8

SUFFIX

- E8*
- ESDM8*

*See Appropriate Reference Page

SPECIFICATIONS

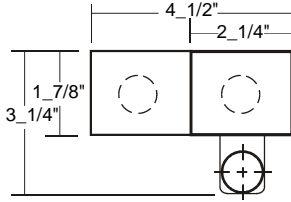
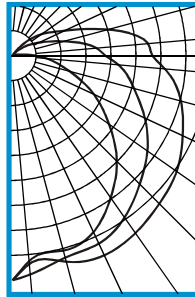
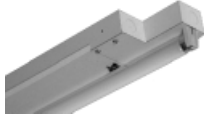
- TYPE** Surface mounted staggered strips for installation where shadow free illumination is desired.
- CONSTRUCTION** 22 ga. cold rolled steel housing. (20 ga. housing available as specified) End plates are fastened to housing by sheet metal screws to assure rigidity.
- FINISH** Baked white polyester finish, minimum reflectance 86%. (Powder coated finish available.)
- WIRING** 120v 60Hz., 277v 60Hz., UNV (universal voltage 120v thru 277v.) or as otherwise specified.
- LABELS** U.L. Listed. Suitable for damp locations.



PHOTOMETRIC DATA

STG100-1-4R-E8

TEST NO.=LA-T0409
 LAMP TYPE=FO32T8
 NO. OF LAMP=1
 LUMENS PER LAMP=2900
 WATTS PER LAMP=32
 BALLAST FACTOR=1
 PHOTOMETRY TYPE=C



CANDLEPOWER

| ANGLE | END | 45 | CROSS |
|-------|-----|-----|-------|
| 0 | 526 | 526 | 526 |
| 5 | 480 | 513 | 488 |
| 15 | 472 | 488 | 500 |
| 25 | 453 | 484 | 514 |
| 35 | 402 | 460 | 505 |
| 45 | 345 | 422 | 488 |
| 55 | 274 | 385 | 470 |
| 65 | 207 | 341 | 440 |
| 75 | 136 | 294 | 408 |
| 85 | 80 | 249 | 358 |
| 90 | 52 | 217 | 327 |
| 95 | 27 | 198 | 318 |
| 105 | 10 | 128 | 235 |
| 115 | 2 | 74 | 139 |
| 125 | 0 | 40 | 91 |
| 135 | 0 | 14 | 47 |
| 145 | 0 | 1 | 8 |
| 155 | 0 | 0 | 0 |
| 165 | 0 | 0 | 0 |
| 175 | 0 | 0 | 0 |
| 180 | 0 | 0 | 0 |

ZONAL LUMEN SUMMARY

| DEGREES | LUMENS | % LAMP | % FIXTURE |
|---------|--------|--------|-----------|
| 0-30 | 410 | 14.1 | 15.2 |
| 0-40 | 697 | 24.0 | 25.8 |
| 0-60 | 1361 | 46.9 | 50.4 |
| 0-90 | 2237 | 77.1 | 82.8 |
| 90-120 | 411 | 14.2 | 15.2 |
| 90-150 | 466 | 16.1 | 17.2 |
| 90-180 | 466 | 16.1 | 17.2 |
| 0-180 | 2702 | 93.2 | 100.0 |

Lumen Output = 2702 lumens
 Luminaire Efficiency = 93.2%

SPACING CRITERION

| ALONG | ACROSS |
|-------|--------|
| 1.21 | 1.47 |

This space is intentionally left blank.

This space is intentionally left blank.

This space is intentionally left blank.

