



OPEN COMMERCIAL

STR240 SERIES



Specification Grade Strip Luminaire



- Specification Grade Strip Luminaire
- 22 Ga. Cold Rolled Steel Housing
- Baked White Polyester Finish
- Screw-On End Caps
- Cover Secured by Two Quarter turn Fasteners
- Suitable for Damp Locations
- Available with:
 - Fluorescent and LED Tube (Internally Driven)
 - Emergency Battery Pack
 - Switch
 - 14 Ga. Wire Guard
 - 12" Coupling For Row Mounting



Photometric Data and IES Files are Available on www.lalighting.com



LOS ANGELES LIGHTING MFG. CO.

10141 OLNEY ST. / EL MONTE, CA 91731

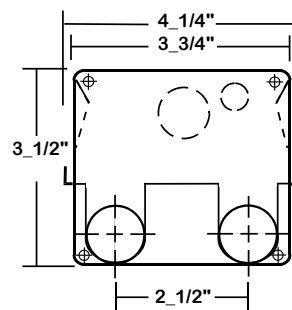
TEL : 626-454-8300 FAX : 626-454-8399

www.lalighting.com



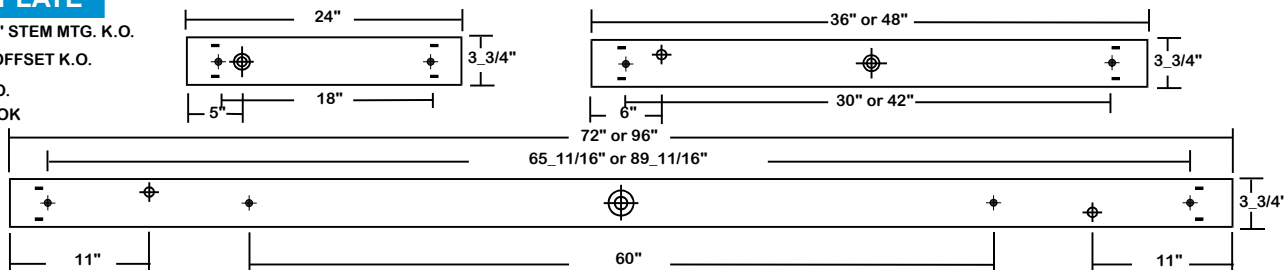
STR240 SERIES

CROSS SECTION



BACK PLATE

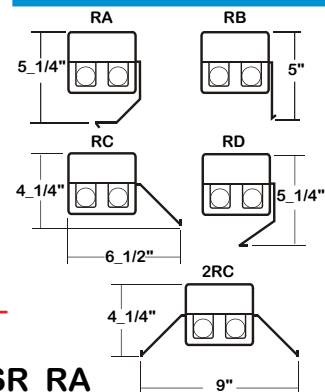
- ◆ 11/16" STEM MTG. K.O.
- ⊕ 7/8" OFFSET K.O.
- ⊕ 2" K.O.
- V-HOOK



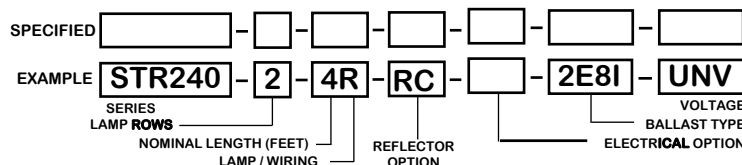
CATALOG NUMBER

NOMINAL LENGTH	TOTAL LENGTH	LAMPS	NOMINAL LENGTH	TOTAL LENGTH	LAMPS	NOMINAL LENGTH	TOTAL LENGTH	LAMPS	NOMINAL LENGTH	TOTAL LENGTH	LAMPS
STR240-1-2M	2'	1	STR240-1-6RT	6'	2	STR240-2-2M	2'	2	STR240-2-6RT	6'	4
STR240-1-3M	3'	1	STR240-1-8RT	8'	2	STR240-2-3M	3'	2	STR240-2-8RT	8'	4
STR240-1-4M	4'	1			STR240-2-4M	4'	2				
STR240-1-6MT	6'	2			STR240-2-6MT	6'	4				
STR240-1-8MT	8'	2			STR240-2-8MT	8'	4				
STR240-1-2R	2'	1			STR240-2-2R	2'	2				
STR240-1-3R	3'	1			STR240-2-3R	3'	2				
STR240-1-4R	4'	1			STR240-2-4R	4'	2				

REFLECTOR INFO



ORDERING GUIDE



NOTE: LAMP/WIRING* M = Miniature Bi-Pin T5 R = Medium Bi-Pin T8 MT = Miniature Bi-Pin T5, Tandem Wiring RT = Medium Bi-Pin T8, Tandem Wiring

SR RA

STYLE

- RA - 3-Bend asymmetrical Refl.
- RB - 90° 1-Bend asymmetrical Refl.
- RC - 45° 1-Bend asymmetrical Refl.

MATERIAL

- Leave blank for white steel
- SR - Specular aluminum (95%)

OPTIONS AND ACCESSORIES

ELECTRICAL OPTIONS

- Emergency Battery Pack **SUFFIX BP***
- External Line Fusing (HLR/GLR) **SUFFIX ELF**
- Plug-In Branch Wiring Connector System **SUFFIX PIW***
- Switch **SUFFIX ***

BALLAST OPTIONS

- Electronic T5 **SUFFIX xE5**
- Electronic T5HO **SUFFIX xE5H**
- Electronic T8 Instant Start **SUFFIX xE8I**
- Electronic T8 Rapid Start **SUFFIX xE8R**
- Electronic T8HO **SUFFIX xE8H**

x = Number of Lamps per Ballast

*See Appropriate Reference Page

ACCESSORIES

- Wire Guard - 14 Ga.
- 12" Coupling For Row Mounting
- Channel Hangers
- 4" Leg Height V-Hook
- Fixture Suspension System

CAT. NO.

- WG14-STR240
- CMC-STR240
- CH-240
- V4
- *

SPECIFICATIONS

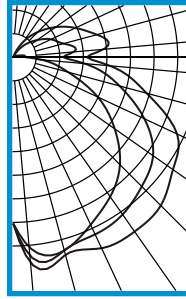
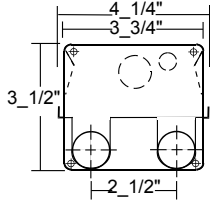
- TYPE
- CONSTRUCTION
- FINISH
- WIRING
- LABELS

Open commercial luminaire for installation in commercial, industrial and mass merchandising applications.
 22 ga. cold rolled steel housing. (20 ga. housing available as specified.) End plates are fastened to housing by sheet metal screws to assure rigidity.
 Baked white polyester finish, minimum reflectance 86%. (Powder coated finish available.)
 120v 60Hz., 277v 60Hz., UNV (universal voltage 120v thru 277v.) or as otherwise specified.
 U.L. Listed. Suitable for damp locations.



STR240-2-4R-E8

TEST NO.=LA-T0274
 LAMP TYPE=FO32T8
 NO. OF LAMP=2
 LUMENS PER LAMP=2900
 WATTS PER LAMP=32
 BALLAST FACTOR=1
 PHOTOMETRY TYPE=C



CANDLEPOWER

ANGLE	END	45	CROSS
0	784	784	784
5	902	943	977
15	942	941	963
25	869	920	993
35	800	903	1002
45	712	859	986
55	583	805	920
65	438	681	852
75	266	518	650
85	136	337	458
90	60	238	348
95	55	286	427
105	34	248	410
115	18	200	327
125	7	143	249
135	1	92	173
145	0	43	103
155	0	9	35
165	0	0	0
175	0	0	0
180	0	0	0

ZONAL LUMEN SUMMARY

DEGREES	LUMENS	% LAMP	% FIXTURE
0-30	786	13.5	15.3
0-40	1352	23.3	26.3
0-60	2712	46.8	52.7
0-90	4206	72.5	81.8
90-120	709	12.2	13.8
90-150	929	16.0	18.1
90-180	936	16.1	18.2
0-180	5142	88.7	100.0

Lumen Output = 5142 lumens
 Luminaire Efficiency = 88.7%

SPACING CRITERION

ALONG	ACROSS
1.52	1.83

This space is intentionally left blank.

This space is intentionally left blank.

This space is intentionally left blank.

