

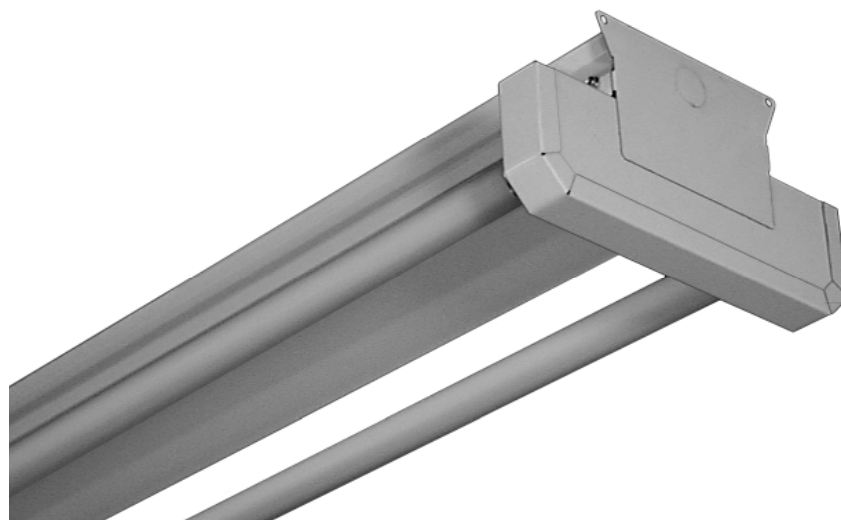


OPEN COMMERCIAL

STR500 SERIES



Open Lamp Strip / Turret Lampholder



- Open Lamp Strip / Turret Lampholder Luminaire
- 22 Ga. Cold Rolled Steel Housing
- Baked White Polyester Finish
- Screw-On End Caps
- Cover Secured by Two Quarter turn Fasteners
- Suitable for Damp Locations
- Available with:
 - Fluorescent, LED and LED T8 (Internally Driven)
 - Emergency Battery Pack
 - Switch
 - 12" Coupling For Row Mounting



Photometric Data and IES Files are Available on www.lalighting.com



LOS ANGELES LIGHTING MFG. CO.

10141 OLNEY ST. / EL MONTE, CA 91731

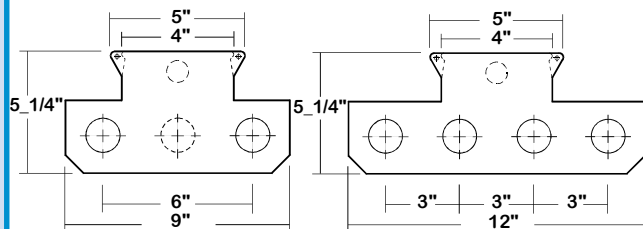
TEL : 626-454-8300 FAX : 626-454-8399

www.lalighting.com



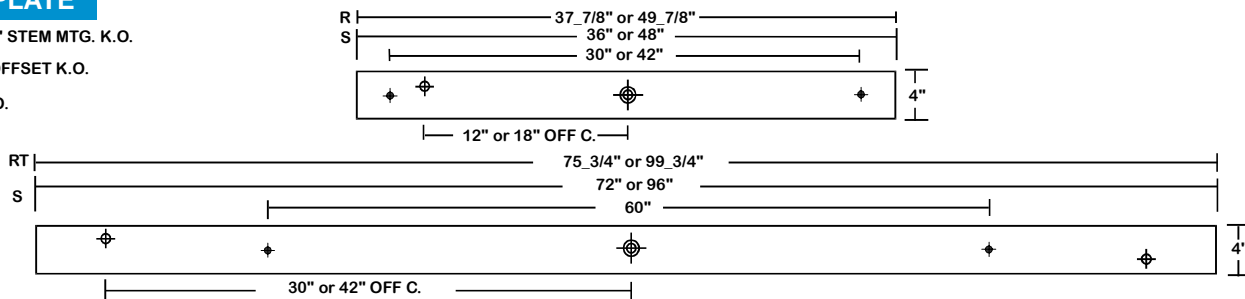
STR500 SERIES

CROSS SECTION



BACK PLATE

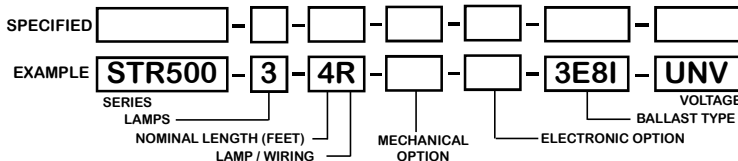
- ◆ 11/16" STEM MTG. K.O.
- ⊕ 7/8" OFFSET K.O.
- ⊕ 2" K.O.



CATALOG NUMBER

	NOMINAL LENGTH	TOTAL LAMPS		NOMINAL LENGTH	TOTAL LAMPS		NOMINAL LENGTH	TOTAL LAMPS
STR500-2-4R	4'	2	STR500-3-4R	4'	3	STR500-4-4R	4'	4
STR500-2-6RT	6'	4	STR500-3-6RT	6'	6	STR500-4-6RT	6'	8
STR500-2-8RT	8'	4	STR500-3-8RT	8'	6	STR500-4-8RT	8'	8
STR500-2-4S	4'	2	STR500-3-4S	4'	3	STR500-4-4S	4'	4
STR500-2-6S	6'	2	STR500-3-6S	6'	3	STR500-4-6S	6'	4
STR500-2-8S	8'	2	STR500-3-8S	8'	3	STR500-4-8S	8'	4
STR500-2-4H	4'	2	STR500-3-16ST	16'	6	STR500-4-4H	4'	4
STR500-2-6H	6'	2	STR500-3-4H	4'	3	STR500-4-6H	6'	4
STR500-2-8H	8'	2	STR500-3-6H	6'	3	STR500-4-8H	8'	4
			STR500-3-8H	8'	3			
			STR500-3-16HT	16'	6			

ORDERING GUIDE



NOTE: LAMP/WIRING*
 R = Medium Bi-Pin T8
 S = Slimline
 H = High Output (800MA)
 RT = Medium Bi-Pin T8, Tandem Wiring
 ST = Slimline, Tandem Wiring
 HT = High Output, Tandem Wiring

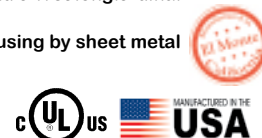
OPTIONS AND ACCESSORIES

● MECHANICAL OPTIONS	SUFFIX	● BALLAST OPTIONS	SUFFIX	● ACCESSORIES	CAT. NO.
Low Density	LD	Electronic T8	E8*	12" Coupling For Row Mounting	CMC-200
● ELECTRICAL OPTIONS	SUFFIX	Electronic Step Dimming T8	ESDM8*	Channel Hangers	CH-200
Emergency Battery Pack	BP*			4" Leg Height V-Hook	V4
External Line Fusing (HLR/GLR)	ELF			Fixture Suspension System	*
Radio Interference Filters	RIF				
Plug-In Branch Wiring Connector System	PIW*				
Switch	*				

*See Appropriate Reference Page

SPECIFICATIONS

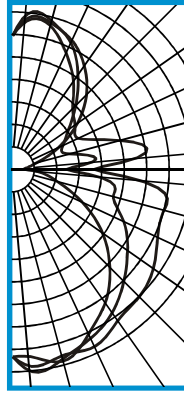
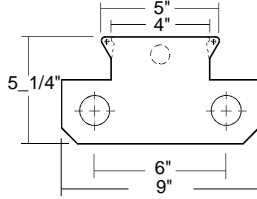
- **TYPE** Open commercial luminaire for installation in areas requiring a large concentration of light. Metal clad turret longitudinal push-pull lamp holders.
- **CONSTRUCTION** 22 ga. cold rolled steel housing. (20 ga. housing available as specified.) End plates are fastened to housing by sheet metal screws to assure rigidity.
- **FINISH** Baked white polyester finish, minimum reflectance 86%. (Powder coated finish available.)
- **WIRING** 120v 60Hz., 277v 60Hz., UNV (universal voltage 120v thru 277v.) or as otherwise specified.
- **LABELS** U.L. Listed. Suitable for damp locations.



PHOTOMETRIC DATA

STR500-2-4R-E8

TEST NO.=LA-T0541
 LAMP TYPE=FO32T8
 NO. OF LAMP=2
 LUMENS PER LAMP=2900
 WATTS PER LAMP=32
 BALLAST FACTOR=1
 PHOTOMETRY TYPE=C



CANDLEPOWER

ANGLE	END	45	CROSS
0	786	786	786
5	787	849	828
15	832	821	808
25	758	780	819
35	679	730	771
45	576	660	753
55	458	588	721
65	319	513	671
75	193	437	657
85	102	364	538
90	52	227	343
95	55	331	513
105	103	249	467
115	206	231	306
125	328	286	319
135	437	373	356
145	525	477	445
155	594	582	534
165	633	641	620
175	632	650	622
180	561	561	561

ZONAL LUMEN SUMMARY

DEGREES	LUMENS	% LAMP	% FIXTURE
0-30	674	11.6	11.9
0-40	1131	19.5	19.9
0-60	2172	37.5	38.3
0-90	3466	59.8	61.0
90-120	834	14.4	14.7
90-150	1706	29.4	30.1
90-180	2212	38.1	39.0
0-180	5678	97.9	100.0

Lumen Output = 5678 lumens
 Luminaire Efficiency = 97.9%

SPACING CRITERION

ALONG	ACROSS
1.34	1.49

This space is intentionally left blank.

This space is intentionally left blank.

This space is intentionally left blank.

