

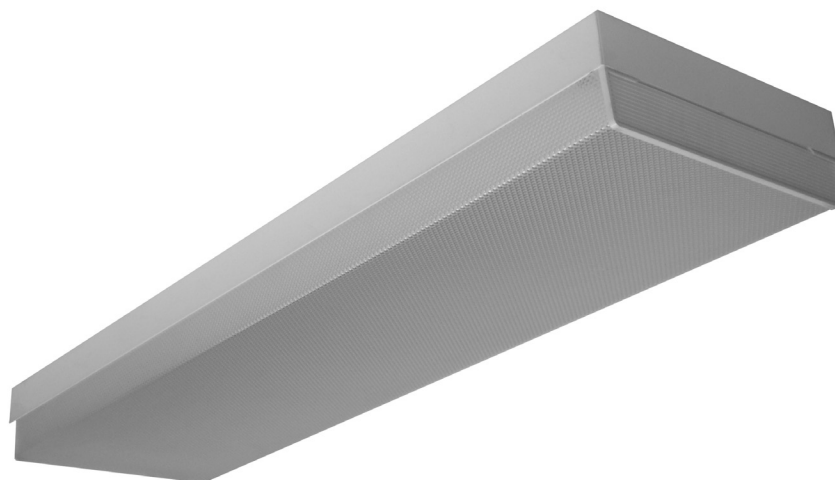


# WRAPAROUND

## WCP300 SERIES



### Square Metal Sided Wrap Luminaire



- 2, 3 or 4 Lamp Square Metal Sided Wrap
- Powder Coated Finish / Painted After Fabrication
- Lens Secured By Spring Loaded Scissors Clips
- Pendant Mountable
- Suitable for Damp Locations
- Available with:
  - Fluorescent, LED and LED T8 (Internally Driven)
  - Variety of Lenses
  - Emergency Battery Pack



Photometric Data and IES Files are Available on [www.lalighting.com](http://www.lalighting.com)

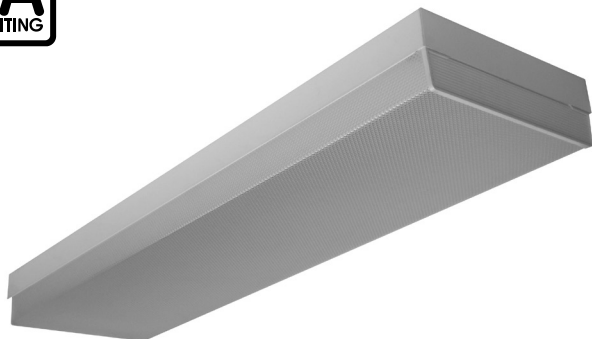


**LOS ANGELES LIGHTING MFG. CO.**

10141 OLNEY ST. / EL MONTE, CA 91731

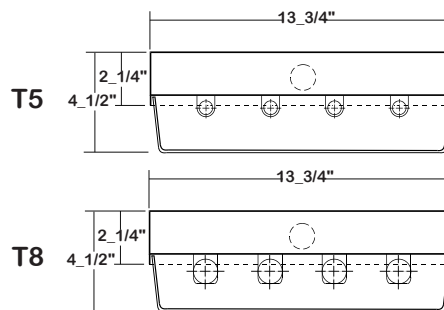
TEL : 626-454-8300 FAX : 626-454-8399

[www.lalighting.com](http://www.lalighting.com)



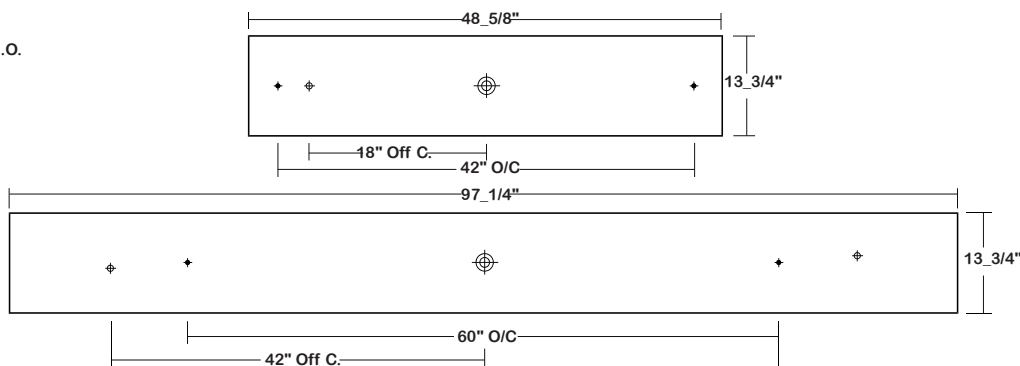
# WCP300 SERIES

## CROSS SECTION



## BACK PLATE

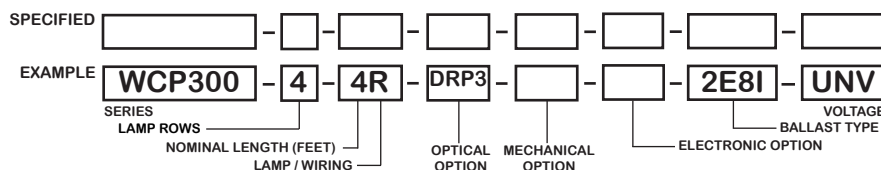
- ◆ 11/16" STEM MTG. K.O.
- ⊕ 7/8" OFFSET K.O.
- ⊕ 2" K.O.



## CATALOG NUMBER

	NOMINAL LENGTH	TOTAL LAMPS
WCP300-3-4R	4'	3
WCP300-3-8RT	8'	6
WCP300-4-4R	4'	4
WCP300-4-8RT	8'	8

## ORDERING GUIDE



**NOTE: LAMP/WIRING\***  
 M= Miniature Bi-Pin T5  
 R = Medium Bi-Pin T8  
 MT= Miniature Bi-Pin T5, Tandem Wiring  
 RT = Medium Bi-Pin T8, Tandem Wiring

## OPTIONS AND ACCESSORIES

<ul style="list-style-type: none"> <li>● <b>OPTICAL OPTIONS</b></li> <li>High Impact Clear Prismatic Acrylic</li> </ul>	SUFFIX DRP3	<ul style="list-style-type: none"> <li>● <b>ELECTRICAL OPTIONS</b></li> <li>Emergency Battery Pack</li> <li>External Line Fusing (HLR/GLR)</li> </ul>	SUFFIX BP* ELF	<ul style="list-style-type: none"> <li>● <b>BALLAST OPTIONS*</b></li> <li>Electronic T5</li> <li>Electronic T5HO</li> <li>Electronic T8 Instant Start</li> <li>Electronic T8 Rapid Start</li> <li>Electronic T8HO</li> <li>x = Number of Lamps per Ballast</li> </ul>	SUFFIX xE5 xE5H xE8I xE8R xE8H
<ul style="list-style-type: none"> <li>● <b>MECHANICAL OPTIONS</b></li> <li>Wet Location (Electro Galvanized Steel Housing)</li> </ul>	SUFFIX WL			<ul style="list-style-type: none"> <li>● <b>ACCESSORIES</b></li> <li>Fixture Suspension System</li> </ul>	CAT. NO. *

\*Refer to [www.lalighting.com/resources](http://www.lalighting.com/resources) for more information

## SPECIFICATIONS

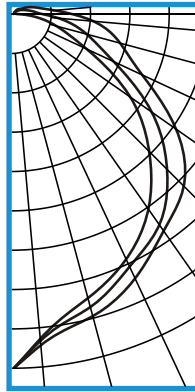
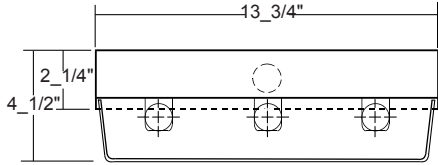
- **TYPE** Surface mounted wrap around square housing. Finger actuated, spring-loaded stamped steel hinge & latch catch located on each lens end plate. Opens from either side for easy relamping.
- **CONSTRUCTION** 22 ga. cold rolled steel welded housing.
- **OPTICS** Flat white acrylic and clear prismatic acrylic lenses are available.
- **FINISH** Baked white powder coated finish, minimum reflectance 90%, painted after fabrication.
- **WIRING** 120v 60Hz., 277v 60Hz., UNV (universal voltage 120v thru 277v.) or as otherwise specified.
- **LABELS** U.L. Listed. Suitable for damp locations.



**PHOTOMETRIC DATA**

WCP300-3-4R-PA-E8

TEST NO.=LA-T0249  
 LAMP TYPE=F032T8  
 NO. OF LAMP=3  
 LUMENS PER LAMP=2900  
 WATTS PER LAMP=32  
 BALLAST FACTOR=1  
 PHOTOMETRY TYPE=C



**CANDLEPOWER**

ANGLE	END	45	CROSS
0	2206	2206	2206
5	2018	2033	2061
15	1824	1882	1942
25	1674	1726	1806
35	1467	1590	1637
45	1190	1350	1501
55	876	1042	1229
65	485	677	876
75	266	465	683
85	98	277	496
90	29	179	365
95	16	138	258
105	12	91	154
115	10	61	101
125	5	42	60
135	2	27	46
145	0	16	32
155	1	10	19
165	0	4	7
175	0	0	0
180	0	0	0

**ZONAL LUMEN SUMMARY**

DEGREES	LUMENS	% LAMP	% FIXTURE
0-30	1531	17.6	24.2
0-40	2518	28.9	39.7
0-60	4501	51.7	71.0
0-90	5958	68.5	94.0
90-120	313	3.6	4.9
90-150	376	4.3	5.9
90-180	382	4.4	6.0
0-180	6340	72.9	100.0

Lumen Output = 6340 lumens  
 Luminaire Efficiency = 72.9%

**SPACING CRITERION**

ALONG	ACROSS
1.06	1.16

This space is intentionally left blank.

This space is intentionally left blank.

This space is intentionally left blank.

