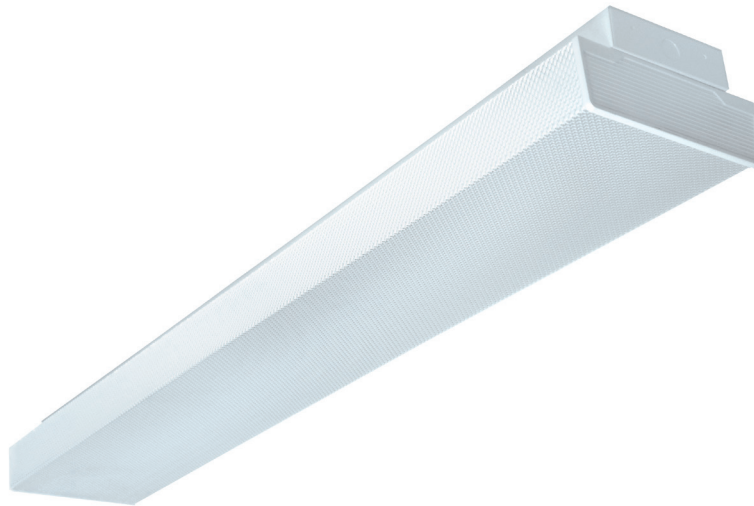




WRAPAROUND

WHO200 SERIES Wraparound Luminaire



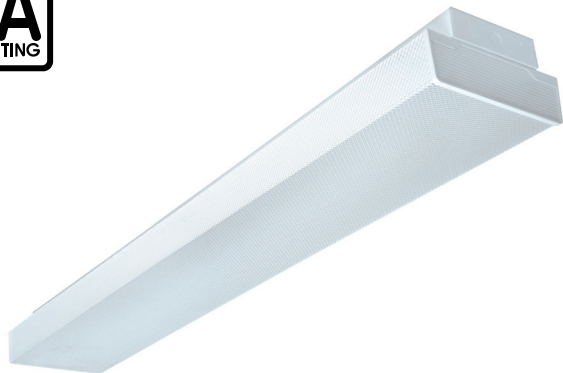
- 2 or 3 Lamp Wraparound Luminaire
- 22 Ga. Cold Rolled Steel Welded Housing
- Powder Coated Finish / Painted After Fabrication
- Lens Secured By Spring Loaded Barrel Latches
- Pendant Mountable
- Suitable for Damp Locations
- Available with:
 - Fluorescent, LED and LED T8 (Internally Driven)
 - Variety of Lenses
 - Emergency Battery Pack



Photometric Data and IES Files are Available on www.lalighting.com

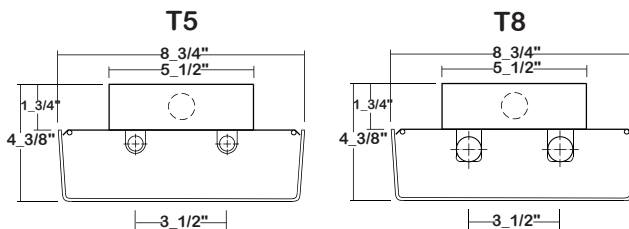


LOS ANGELES LIGHTING MFG. CO.
 10141 OLNEY ST. / EL MONTE, CA 91731
TEL : 626-454-8300 FAX : 626-454-8399
www.lalighting.com



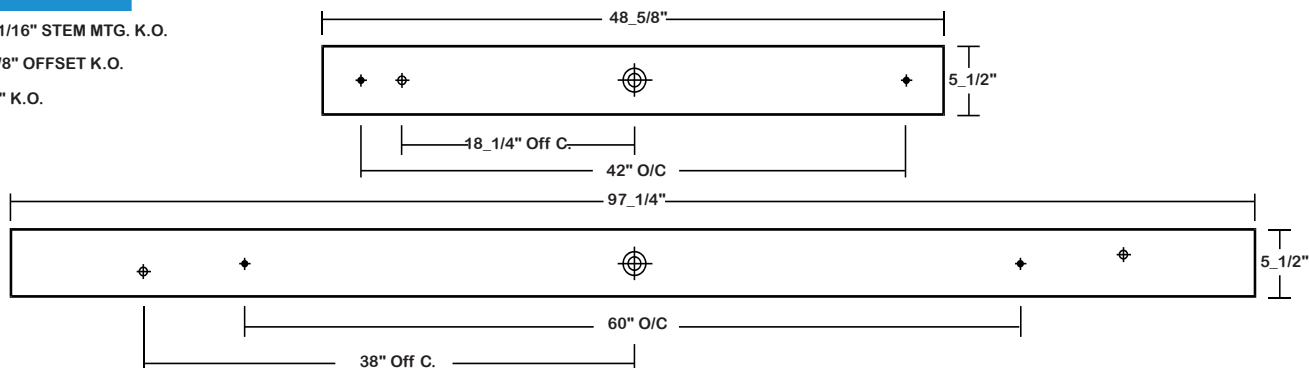
WHO200 SERIES

CROSS SECTION



BACK PLATE

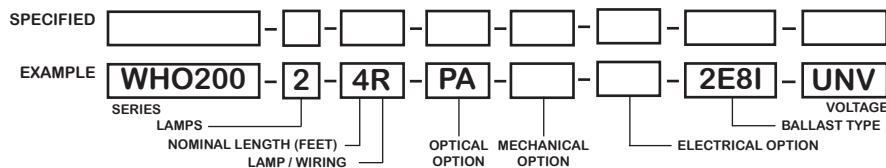
- ◆ 11/16" STEM MTG. K.O.
- ⊕ 7/8" OFFSET K.O.
- ⊕ 2" K.O.



CATALOG NUMBER

	NOMINAL LENGTH	TOTAL LAMPS		NOMINAL LENGTH	TOTAL LAMPS
WHO200-2-4M	4'	2	WHO200-2-4R	4'	2
WHO200-2-8MT	8'	4	WHO200-2-8RT	8'	4
WHO200-3-4M	4'	3	WHO200-3-4R	4'	3
WHO200-3-8MT	8'	6	WHO200-3-8RT	8'	6

ORDERING GUIDE



NOTE: LAMP/WIR-
M= Miniature Bi-Pin T5
MT= Miniature Bi-Pin T5 Tandem Wiring
R= Medium Bi-Pin T8
RT= Medium Bi-Pin T8 Tandem Wiring

OPTIONS AND ACCESSORIES

- | | | | | | |
|--|----------------|--|------------------------------------|--|---|
| <ul style="list-style-type: none"> ● OPTICAL OPTIONS
High Impact Clear Prismatic Acrylic | SUFFIX
DRPA | <ul style="list-style-type: none"> ● ELECTRICAL OPTIONS
Emergency Battery Pack
External Line Fusing (HLR/GLR)
Radio Interference Filters
Night Light (Fluor. 7W or 9W) | SUFFIX
BP*
ELF
RIF
NL9 | <ul style="list-style-type: none"> ● BALLAST OPTIONS
Electronic T5
Electronic T5HO
Electronic Step Dimming T5HO
Electronic T8
Electronic Step Dimming T8 | SUFFIX
E5*
E5H
ESDM5H
E8*
ESDM8* |
| | | | | <ul style="list-style-type: none"> ● ACCESSORIES
Fixture Suspension System | CAT.NO.
* |

*See Appropriate Reference Page

SPECIFICATIONS

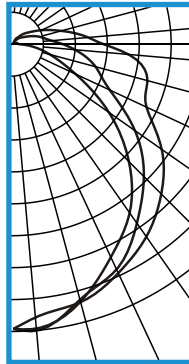
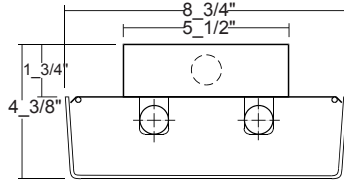
- **TYPE** Surface or pendant mounted luminaire for use in corridors. Spring loaded barrel pin hinge and latch.
- **CONSTRUCTION** 22 ga. cold rolled steel welded housing.
- **FINISH** Baked white powder coated finish, minimum reflectance 90%, painted after fabrication.
- **OPTICS** Available in extruded clear prismatic acrylic or flat white acrylic.
- **WIRING** 120v 60Hz., 277v 60Hz., UNV (universal voltage 120v thru 277v.) or as otherwise specified.
- **LABELS** U.L. Listed. Suitable for damp locations.



PHOTOMETRIC DATA

WHO200-2-4R-PA-E8

TEST NO.=LA-T0244
 LAMP TYPE=F032T8
 NO. OF LAMP=2
 LUMENS PER LAMP=2900
 WATTS PER LAMP=32
 BALLAST FACTOR=1
 PHOTOMETRY TYPE=C



CANDLEPOWER

ANGLE	END	45	CROSS
0	1254	1254	1254
5	1256	1266	1205
15	1168	1159	1173
25	1027	1088	1107
35	897	953	1028
45	717	813	923
55	507	650	796
65	293	465	646
75	161	373	611
85	67	272	508
90	27	218	398
95	21	171	333
105	18	123	224
115	12	83	147
125	8	54	95
135	6	39	65
145	2	24	39
155	1	13	26
165	0	6	9
175	0	0	1
180	0	0	0

ZONAL LUMEN SUMMARY

DEGREES	LUMENS	% LAMP	% FIXTURE
0-30	948	16.3	21.4
0-40	1550	26.7	35.0
0-60	2766	47.7	62.5
0-90	3919	67.6	88.5
90-120	411	7.1	9.3
90-150	501	8.6	11.3
90-180	509	8.8	11.5
0-180	4428	76.3	100.0

Lumen Output = 4428 lumens
 Luminaire Efficiency = 76.3%

SPACING CRITERION

ALONG	ACROSS
1.15	1.27

This space is intentionally left blank.

This space is intentionally left blank.

This space is intentionally left blank.

