

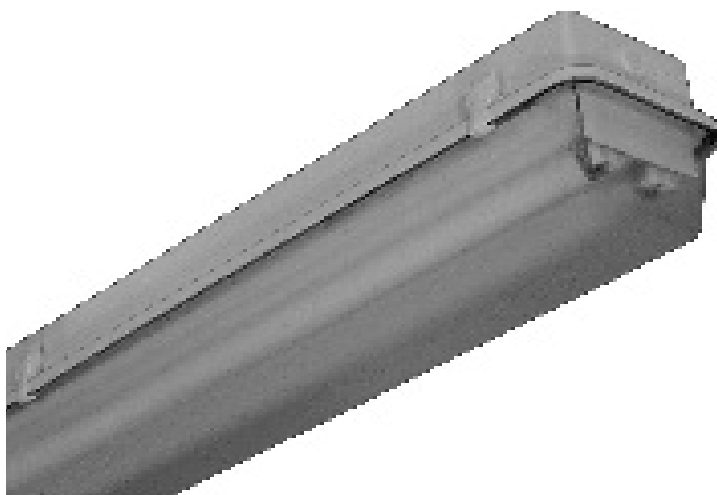


WRAPAROUND

WPL200 SERIES



Fully Gasketed Enclosure Luminaire



- Fiberglass Housing and White Celcon Latches
- 22 Ga. Cold Rolled Steel Internal Housing
- Continuous Poured Gasket
- Clear Stippled Acrylic Deep Diffuser
- Suitable for Damp Locations
- IP Rating :
 - IP65 - Dust tight / Protected Against Water Jetting
 - IP67 - Dust tight / Temporary Submersion Under Water For 30 Minutes
- Available with :
 - Fluorescent, LED and LED T8 (Internally Driven)
 - Stainless Steel Mounting Brackets
 - Stainless Steel Latches
 - Tamper Proof Screws
 - Emergency Battery Pack
 - 14Ga. Wire Guard



Photometric Data and IES Files are Available on www.lalighting.com



LOS ANGELES LIGHTING MFG. CO.

10141 OLNEY ST. / EL MONTE, CA 91731

TEL : 626-454-8300 FAX : 626-454-8399

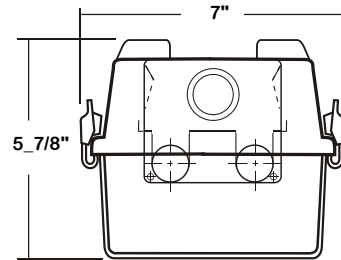
www.lalighting.com

BAYLIGHTER™ - LED T8 (Internally Driven)



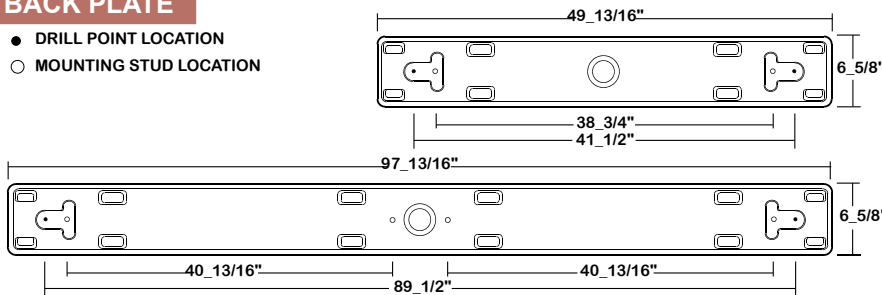
WPL200 SERIES - LED T8

CROSS SECTION



BACK PLATE

- DRILL POINT LOCATION
- MOUNTING STUD LOCATION



ACCESSORIES

WPL2/SSMB-MOUNTING BRACKET

- Corrosion resistant stainless steel bracket, two brackets per set.
- Fixture snaps securely into place, mounting method does not require stud in fixture.



CATALOG NUMBER

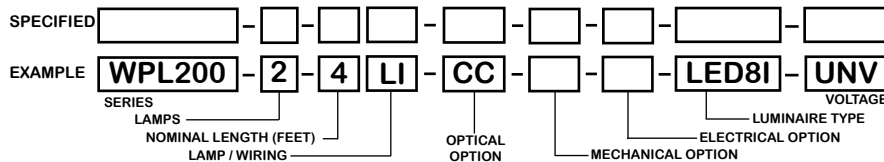
	NOMINAL LENGTH	TOTAL MODULES		NOMINAL LENGTH	TOTAL MODULES
WPL200-1-4Lx	4'	1	WPL200-2-8LxT	8'	4
WPL200-1-8LxT	8'	2	WPL200-3-4Lx	4'	3
WPL200-2-4Lx	4'	2	WPL200-3-8LxT	8'	6

TS2 - LED Luminaire On/Off Safety Switch

- Easily accessible on exterior of wire way.
- Allows individual fixture to be switched ON/OFF during re-lamping or Maintenance.
- Prevents damage to lamp and electrical shock during lamping and re-lamping.
- Allows safe entry to wire way channel where power connector can be disconnected for maintenance to fixture.



ORDERING GUIDE



LAMP / WIRING

LI = LED T8 internal driver light tube.
Both ends powered.
Shunted sockets used.



LR = LED T8 internal driver light tube.
Single end powered.
Non-shunted sockets used.



OPTIONS AND ACCESSORIES

● OPTICAL OPTIONS	SUFFIX	● MECHANICAL OPTIONS	SUFFIX	● ACCESSORIES	CAT. NO.
Clear Stippled Acrylic	CC	Wet Location	WL	Stainless Steel Mounting Bracket	WPL2/SSMB
Baked white polyester finish	CCDR	(Two Mtg. Brackets and One Watertight Hub Provided)		Additional Stainless Steel Latch Set for 4' Fixture	WPL2/SSL4
Clear Prismatic Polycarbonate	PPC2	Stainless Steel Latches	SSL	Additional Stainless Steel Latch Set for 8' Fixture	WPL2/SSL8
* Other Lens Available Upon Request		Tamper Proof Screws (Hex Socket With Post)	TP	Wire Guard - 14 Ga.	WG14-WPL200
		● ELECTRICAL OPTIONS	SUFFIX		
		LED Luminaire ON/OFF Safety Switch	TS2		

*See appropriate reference page

SPECIFICATIONS

- TYPE: Surface mounted, fully enclosed luminaire for installation in damp or wet locations as specified. LED T8 internally driven light tube(s)**
- CONSTRUCTION: 22 ga. cold rolled steel internal housing (20 ga. housing available as specified), fiberglass External wrap.
- FINISH: Baked white polyester finish, minimum reflectance 86%. (Powder coated finish available.)
- OPTICS: Clear stippled acrylic deep lens standard. Secured to fiberglass housing by plastic trunk type latches, stainless steel latches available.
- WIRING: Operate LED T8 internally driven light tube(s)**.
- LABELS: Suitable for damp locations.

** Lamp(s) by others.

