

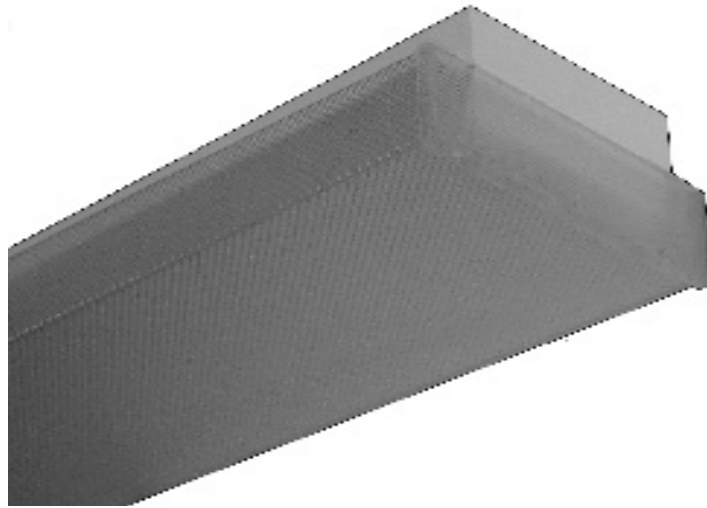


WRAPAROUND

WSB100 SERIES



Square Basket Wraparound Luminaire



- 11" Width, Square Basket Wraparound Luminaire
- 20 Ga. Cold Rolled Steel Welded Housing
- Powder Coated Finish / Painted After Fabrication
- Lens Secured By Spring Loaded Barrel Latches
- Pendant Mountable
- Suitable for Damp Locations
- Available with:
 - Fluorescent, LED and LED T8 (Internally Driven)
 - Variety of Lenses
 - Emergency Battery Pack



Photometric Data and IES Files are Available on www.lalighting.com

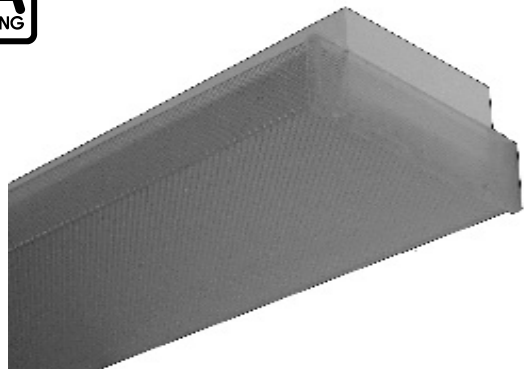


LOS ANGELES LIGHTING MFG. CO.

10141 OLNEY ST. / EL MONTE, CA 91731

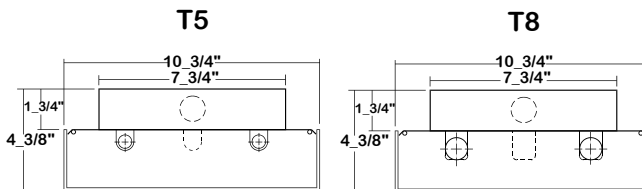
TEL : 626-454-8300 FAX : 626-454-8399

www.lalighting.com



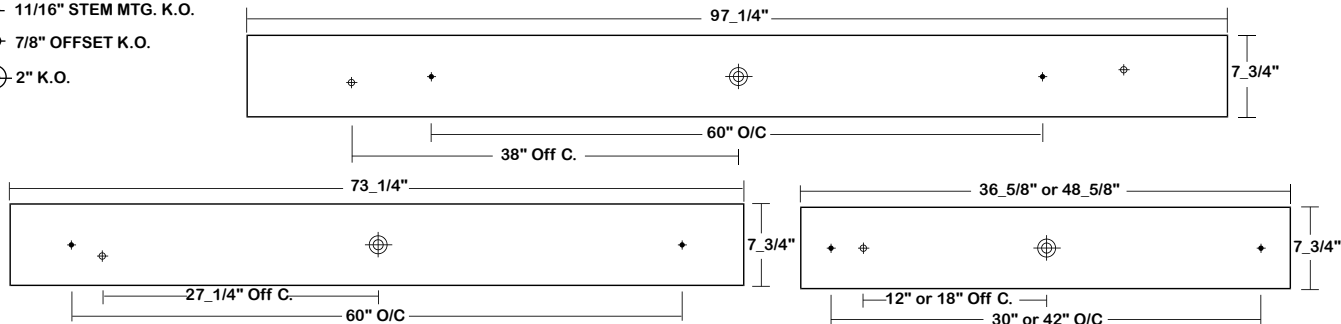
WSB100 SERIES

CROSS SECTION



BACK PLATE

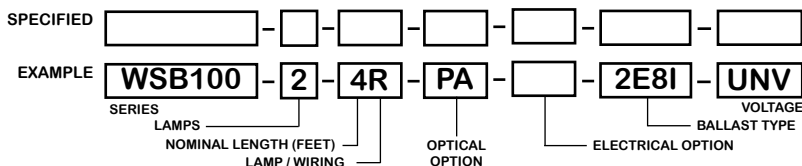
- ◆ 11/16" STEM MTG. K.O.
- ⊕ 7/8" OFFSET K.O.
- ⊕ 2" K.O.



CATALOG NUMBER

	NOMINAL LENGTH	TOTAL LAMPS		NOMINAL LENGTH	TOTAL LAMPS		NOMINAL LENGTH	TOTAL LAMPS		NOMINAL LENGTH	TOTAL LAMPS
WSB100-2-3M	3'	2	WSB100-3-4M	4'	3	WSB100-2-3R	3'	2	WSB100-3-4R	4'	3
WSB100-2-4M	4'	2	WSB100-3-6MT	6'	6	WSB100-2-4R	4'	2	WSB100-3-6RT	6'	6
WSB100-2-6MT	6'	4	WSB100-3-8RT	8'	6	WSB100-2-6RT	6'	4	WSB100-3-8RT	8'	6
	8'	4				WSB100-2-8RT	8'	4			

ORDERING GUIDE



NOTE: LAMP/WIR-
 M= Miniature Bi-Pin T5
 MT= Miniature Bi-Pin T5 Tandem Wiring
 R= Medium Bi-Pin T8
 RT= Medium Bi-Pin T8 Tandem Wiring

OPTIONS AND ACCESSORIES

- | | | | | | |
|---|---|--|---|---|--|
| <ul style="list-style-type: none"> ● OPTICAL OPTIONS Clear Prismatic Acrylic Flat White Acrylic American Louver® Injection Molded Lens | <p>SUFFIX</p> <p>PA</p> <p>FWA</p> <p>IML</p> | <ul style="list-style-type: none"> ● ELECTRICAL OPTIONS Emergency Battery Pack External Line Fusing (HLR/GLR) Radio Interference Filters Night Light (Fluor. 7W or 9W) | <p>SUFFIX</p> <p>BP*</p> <p>ELF</p> <p>RIF</p> <p>NL9</p> | <ul style="list-style-type: none"> ● BALLAST OPTIONS Electronic T5 Electronic T5HO Electronic Step Dimming T5HO Electronic T8 Electronic Step Dimming T8 | <p>SUFFIX</p> <p>E5*</p> <p>E5H</p> <p>ESDM5H</p> <p>E8*</p> <p>ESDM8*</p> |
| | | | | <ul style="list-style-type: none"> ● ACCESSORIES Fixture Suspension System | <p>CAT.NO.</p> <p>*</p> |

*See Appropriate Reference Page

SPECIFICATIONS

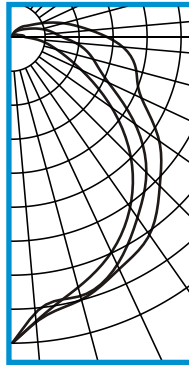
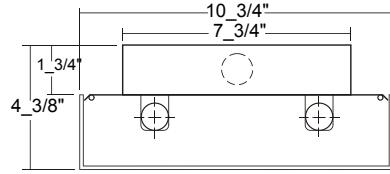
- **TYPE** Surface mounted luminaire. Spring loaded hinge and latch. Opens from either side, for easy relamping.
- **CONSTRUCTION** 22 ga. cold rolled steel welded housing.
- **FINISH** Baked white powder coated finish, minimum reflectance 90%, painted after fabrication.
- **OPTICS** Clear prismatic acrylic lens with injection molded clear prismatic ends, flat white acrylic diffuser with injection molded white ends, or clear prismatic injection molded lens.
- **WIRING** 120v 60Hz., 277v 60Hz., UNV (universal voltage 120v thru 277v.) or as otherwise specified.
- **LABELS** U.L. Suitable for damp locations.



PHOTOMETRIC DATA

WSB100-2-4R-PA-E8

TEST NO.=LA-T0256
 LAMP TYPE=FO32T8
 NO. OF LAMP=2
 LUMENS PER LAMP=2900
 WATTS PER LAMP=32
 BALLAST FACTOR=1
 PHOTOMETRY TYPE=C



CANDLEPOWER

ANGLE	END	45	CROSS
0	1347	1347	1347
5	1252	1215	1256
15	1137	1178	1194
25	1041	1101	1123
35	908	964	1058
45	738	836	920
55	532	659	790
65	332	466	627
75	200	369	566
85	108	280	489
90	60	222	420
95	53	190	348
105	36	138	237
115	26	90	147
125	21	61	91
135	15	44	67
145	9	32	44
155	4	20	28
165	2	11	14
175	1	3	9
180	0	0	0

ZONAL LUMEN SUMMARY

DEGREES	LUMENS	% LAMP	% FIXTURE
0-30	956	16.5	21.0
0-40	1567	27.0	34.5
0-60	2804	48.3	61.7
0-90	3971	68.5	87.4
90-120	456	7.9	10.0
90-150	560	9.6	12.3
90-180	571	9.8	12.6
0-180	4542	78.3	100.0

Lumen Output = 4542 lumens
 Luminaire Efficiency = 78.3%

SPACING CRITERION

ALONG	ACROSS
1.08	1.21

This space is intentionally left blank.

This space is intentionally left blank.

This space is intentionally left blank.

