



# WRAPAROUND

## WSE200 SERIES Parking Structure Luminaire



- Parking Structure Luminaire
- Side KO's For 1/2" Conduit
- 22 ga. Cold Rolled Steel Housing With 18 ga. End Plates
- Welded And Painted After Fabrication
- 25% DR High Impact Frosted Acrylic Lens
- Lens Secured By Stainless Steel Knurled Head Screws
- Fully Neoprene Gasketed
- Suitable for Damp Locations
- Available with:
  - Fluorescent, LED and LED T8 (Internally Driven)
  - 95% Enhanced Specular Aluminum Reflectors
  - Tamper Proof Screws / Phillips Head Screws
  - Emergency Battery Pack



Photometric Data and IES Files are Available on [www.lalighting.com](http://www.lalighting.com)



**LOS ANGELES LIGHTING MFG. CO.**  
 10141 OLNEY ST. / EL MONTE, CA 91731  
**TEL : 626-454-8300 FAX : 626-454-8399**  
[www.lalighting.com](http://www.lalighting.com)

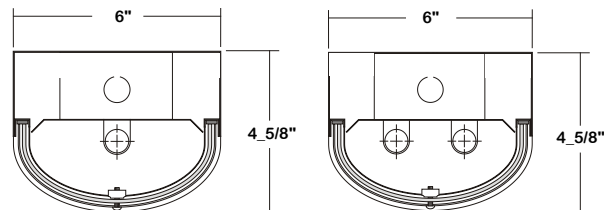


Side KO's for 1/2" Conduit



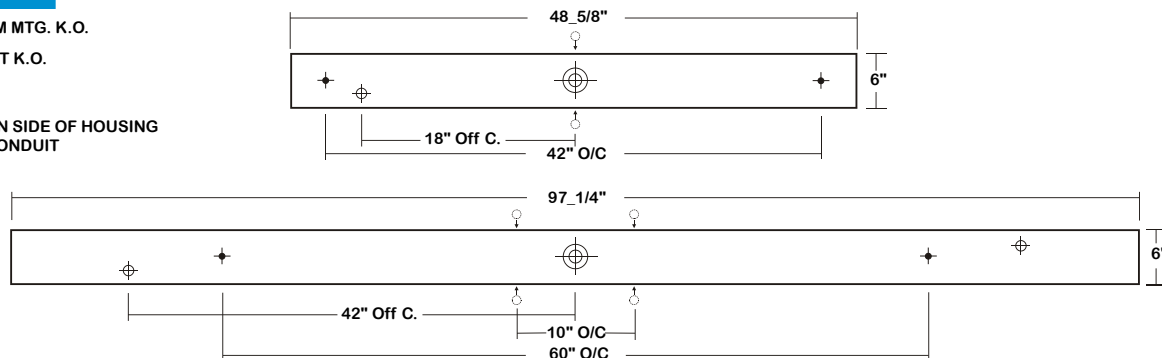
# WSE200 SERIES

## CROSS SECTION



## BACK PLATE

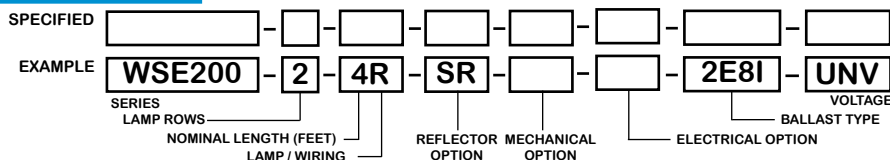
- ◆ 11/16" STEM MTG. K.O.
- ⊕ 7/8" OFFSET K.O.
- ⊕ 2" K.O.
- 7/8" K.O. ON SIDE OF HOUSING FOR 1/2" CONDUIT



## CATALOG NUMBER

	NOMINAL LENGTH	TOTAL LAMPS		NOMINAL LENGTH	TOTAL LAMPS
WSE200-1-4M	4'	1	WSE200-1-4R	4'	1
WSE200-1-8MT	8'	2	WSE200-1-8RT	8'	2
WSE200-2-4M	4'	2	WSE200-2-4R	4'	2
WSE200-2-8MT	8'	4	WSE200-2-8RT	8'	4
WSE200-3-4M	4'	3	WSE200-3-4R	4'	3
WSE200-3-8MT	8'	6	WSE200-3-8RT	8'	6

## ORDERING GUIDE



**NOTE: LAMP/WIRING\***  
 M= Miniature Bi-Pin T5  
 MT= Miniature Bi-Pin T5 Tandem Wiring  
 R= Medium Bi-Pin T8  
 RT= Medium Bi-Pin T8 Tandem Wiring

## OPTIONS AND ACCESSORIES

### REFLECTOR OPTIONS

- Specular Aluminum Reflector (95%)
- White Reflector

SUFFIX  
SR  
WR

### MECHANICAL OPTIONS

- Tamper Proof Screws (Hex Socket with Post)
- Phillips Head Screw

SUFFIX  
TP  
PH

### ELECTRICAL OPTIONS

- Emergency Battery Pack
- External Line Fusing (HLR/GLR)

SUFFIX  
BP\*  
ELF

### BALLAST OPTIONS\*

- Electronic T5
- Electronic T5HO
- Electronic T8 Instant Start
- Electronic T8 Rapid Start
- Electronic T8HO

SUFFIX  
xE5  
xE5H  
xE8I  
xE8R  
xE8H

### ACCESSORIES

- Fixture Suspension System

CAT.NO.  
\*

\*Refer to [www.lalighting.com/resources](http://www.lalighting.com/resources) for more information

## SPECIFICATIONS

- TYPE
- CONSTRUCTION
- FINISH
- REFLECTOR
- OPTICS
- WIRING
- LABELS

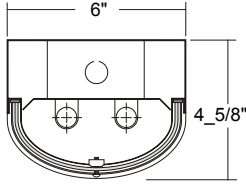
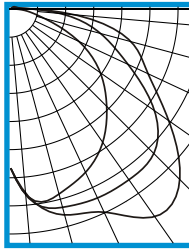
1, 2 or 3 lamps parking structure luminaire.  
 22 ga. die formed cold rolled steel housing with 18ga. end plates, spot welded seams and corners.  
 Baked white powder coated finish, minimum reflectance 90%, painted after fabrication.  
 White reflector standard, (95% reflectance specular aluminum reflector available).  
 25% DR high impact linear pattern frosted acrylic lens, neoprene gasketed. Lens secured by steel lens-retainers and 2 stainless steel knurled head thumb screws. Phillips head screws and temper proof screws available.  
 120v 60Hz., 277v 60Hz., UNV (universal voltage 120v thru 277v.) or as otherwise specified.  
 U.L. Listed. Suitable for damp locations.



**PHOTOMETRIC DATA**

WSE200-2-4M-SR-E5H

TEST NO.=LA-T1766  
 LAMP TYPE=F54T5HO  
 NO. OF LAMP=2  
 LUMENS PER LAMP=5000  
 WATTS PER LAMP=54  
 BALLAST FACTOR=1  
 PHOTOMETRY TYPE=C



**CANDLEPOWER**

ANGLE	END	45	CROSS
0	1554	1554	1554
5	1831	1838	1821
15	1863	2002	2082
25	1749	2031	2189
35	1574	2028	2471
45	1326	1983	2337
55	1063	1711	1880
65	722	1257	1478
75	325	903	1211
85	129	480	620
90	50	211	227
95	25	98	102
105	10	51	64
115	6	34	48
125	2	23	40
135	0	12	24
145	0	6	13
155	0	1	5
165	0	0	0
175	0	0	0
180	0	0	0

**ZONAL LUMEN SUMMARY**

DEGREES	LUMENS	% LAMP	% FIXTURE
0-30	1662	16.6	19.5
0-40	2935	29.3	34.5
0-60	5839	58.4	68.6
0-90	8290	82.9	97.4
90-120	190	1.9	2.2
90-150	223	2.2	2.6
90-180	224	2.2	2.6
0-180	8514	85.1	100.0

Lumen Output = 8514lumens  
 Luminaire Efficiency = 85.1%

**SPACING CRITERION**

ALONG	ACROSS
1.49	2.05

This space is intentionally left blank.

This space is intentionally left blank.

This space is intentionally left blank.

