



WRAPAROUND

WSE200 SERIES



Parking Structure Luminaire



- Parking Structure Luminaire
- Side KO's For 1/2" Conduit
- 22 ga. Cold Rolled Steel Housing With 18 ga. End Plates
- Welded And Painted After Fabrication
- 25% DR High Impact Frosted Acrylic Lens
- Lens Secured By Stainless Steel Knurled Head Screws
- Fully Neoprene Gasketed
- Suitable for Damp Locations
- Available with:

Fluorescent, LED and LED T8 (Internally Driven)

95% Enhanced Specular Aluminum Reflectors

Tamper Proof Screws / Phillips Head Screws

Emergency Battery Pack



Photometric Data and IES Files are Available on www.lalighting.com



LOS ANGELES LIGHTING MFG. CO.

10141 OLNEY ST. / EL MONTE, CA 91731

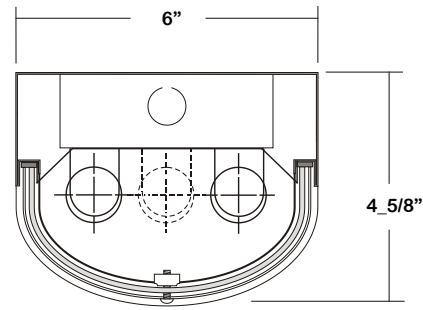
TEL : 626-454-8300 FAX : 626-454-8399

www.lalighting.com



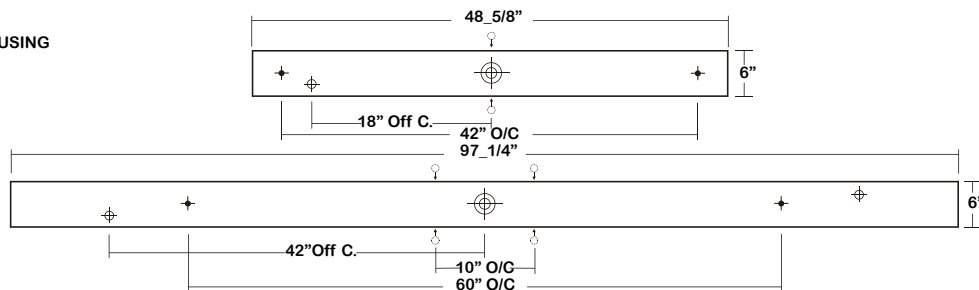
WSE200 SERIES - LED T8

CROSS SECTION



BACK PLATE

- 7/8" K.O. ON SIDE OF HOUSING FOR 1/2" CONDUIT
- ◆ 11/16" STEM MTG. K.O.
- ⊕ 7/8" OFFSET K.O.
- ⊕ 2" K.O.



CATALOG NUMBER

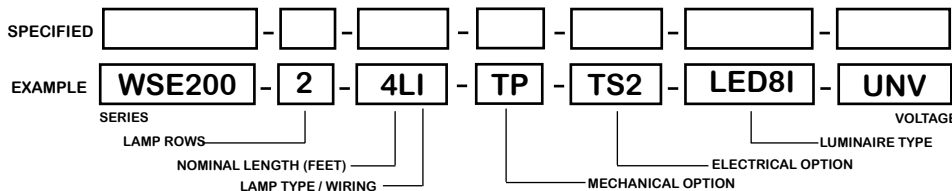
| | NOMINAL LENGTH | TOTAL LAMPS | | NOMINAL LENGTH | TOTAL LAMPS |
|---------------|----------------|-------------|---------------|----------------|-------------|
| WSE200-1-4LI | 4' | 1 | WSE200-2-8LIT | 8' | 4 |
| WSE200-1-4LR | 4' | 1 | WSE200-2-8LRT | 8' | 4 |
| WSE200-1-8LIT | 8' | 2 | WSE200-3-4LI | 4' | 3 |
| WSE200-1-8LRT | 8' | 2 | WSE200-3-4LR | 4' | 3 |
| WSE200-2-4LI | 4' | 2 | WSE200-3-8LIT | 8' | 6 |
| WSE200-2-4LR | 4' | 2 | WSE200-3-8LRT | 8' | 6 |

TS2 - LED Luminaire On/Off Safety Switch



- Easily accessible on exterior of wire way.
- Allows individual fixture to be switched ON/OFF during re-lamping or Maintenance.
- Prevents damage to lamp and electrical shock during lamping and re-lamping.
- Allows safe entry to wire way channel where power connector can be disconnected for maintenance to fixture.

ORDERING GUIDE



LAMP/ WIRING

LI = LED T8 internal driver light tube.
Both ends powered.
Shunted sockets used.



LR = LED T8 internal driver light tube.
Single end powered.
Non-shunted sockets used.



OPTIONS AND ACCESSORIES

| MECHANICAL OPTIONS | SUFFIX | ELECTRICAL OPTIONS | SUFFIX | ACCESSORIES | CAT.NO. |
|--|--------|------------------------------------|--------|---------------------------|---------|
| Tamper Proof Screws (Hex Socket w/ Post) | TP | LED Luminaire ON/OFF Safety Switch | TS2 | Fixture Suspension System | * |
| Phillips Head Screw | PH | | * | | |

*See Appropriate Reference Page

SPECIFICATIONS

- **TYPE** 1, 2 or 3 lamps parking structure luminaire for LED T8 internal driver light tube (s)**.
- **CONSTRUCTION** 22 ga. die formed cold rolled steel housing with 18ga. end plates, spot welded seams and corners.
- **FINISH** Baked white powder coated finish, minimum reflectance 90%, painted after fabrication.
- **OPTICS** 25% DR high impact linear pattern frosted acrylic lens, neoprene gasketed. Lens secured by steel lens-retainers and 2 knurled head thumb screws. Phillips head screws and tamper proof screws available.
- **WIRING** Operates LED T8 internal driver light tube(s)**.
- **LABELS** Conforms to UL standard 1598 - SUB 8750.



** Lamp(s) by others.