

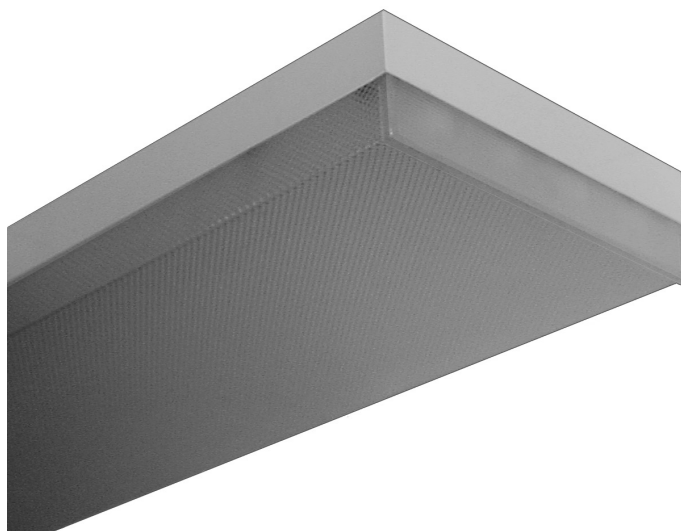


WRAPAROUND

WSM200 SERIES



Square Metal Sided Wrap Luminaire



- 16" Width Square Metal Sided Wrap Luminaire
- 20 Ga. Cold Rolled Steel Housing
- Welded and Painted After Fabrication
- Lens Secured By Torsion Springs
- Pendant Mountable
- Suitable for Damp Locations
- Available with:
 - Fluorescent, LED and LED T8 (Internally Driven)
 - Variety of Lenses
 - Tamper Proof Screws
 - Emergency Battery Pack



Photometric Data and IES Files are Available on www.lalighting.com

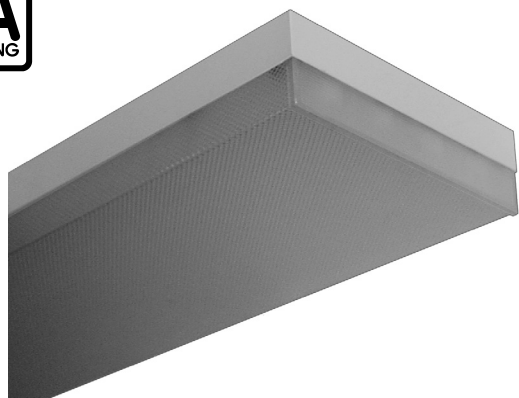


LOS ANGELES LIGHTING MFG. CO.

10141 OLNEY ST. / EL MONTE, CA 91731

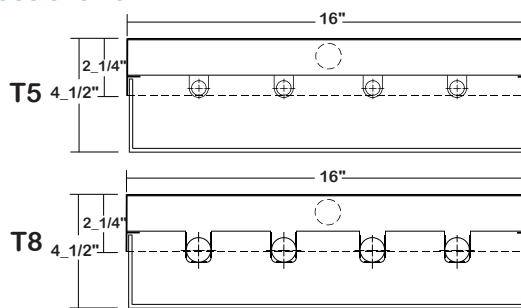
TEL : 626-454-8300 FAX : 626-454-8399

www.lalighting.com



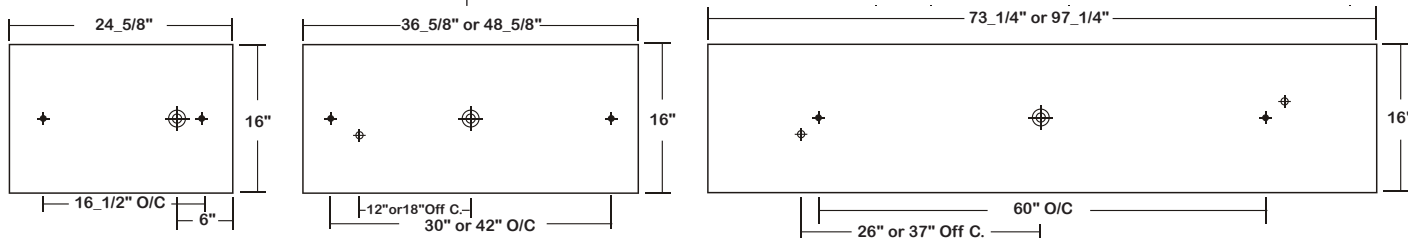
WSM200 SERIES

CROSS SECTION



BACK PLATE

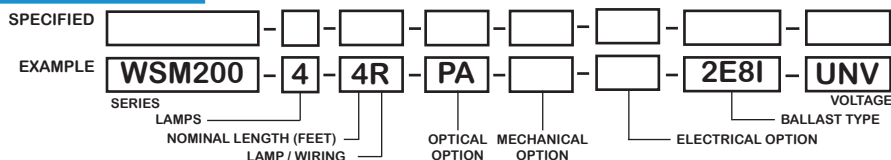
- ◆ 11/16" STEM MTG. K.O.
- ⊕ 7/8" OFFSET K.O.
- ⊕ 2" K.O.



CATALOG NUMBER

	NOMINAL LENGTH	TOTAL LAMPS		NOMINAL LENGTH	TOTAL LAMPS		NOMINAL LENGTH	TOTAL LAMPS		NOMINAL LENGTH	TOTAL LAMPS
WSM200-2-2M	2'	2	WSM200-3-6MT	6'	6	WSM200-2-2R	2'	2	WSM200-3-6RT	6'	6
WSM200-2-3M	3'	2	WSM200-3-8MT	8'	6	WSM200-2-3R	3'	2	WSM200-3-8RT	8'	6
WSM200-2-4M	4'	2	WSM200-4-2M	2'	4	WSM200-2-4R	4'	2	WSM200-4-2R	2'	4
WSM200-2-6MT	6'	4	WSM200-4-3M	3'	4	WSM200-2-6RT	6'	4	WSM200-4-3R	3'	4
WSM200-2-8MT	8'	4	WSM200-4-4M	4'	4	WSM200-2-8RT	8'	4	WSM200-4-4R	4'	4
WSM200-3-2M	2'	3	WSM200-4-6MT	6'	8	WSM200-3-2R	2'	3	WSM200-4-6RT	6'	8
WSM200-3-3M	3'	3	WSM200-4-8MT	8'	8	WSM200-3-3R	3'	3	WSM200-4-8RT	8'	8
WSM200-3-4M	4'	3				WSM200-3-4R	4'	3			

ORDERING GUIDE



NOTE: LAMP/WIR-
 M= Miniature Bi-Pin T5
 MT= Miniature Bi-Pin T5 Tandem Wiring
 R= Medium Bi-Pin T8
 RT= Medium Bi-Pin T8 Tandem Wiring

OPTIONS AND ACCESSORIES

- | | | | | | |
|---|-----------------------|--|------------------------------------|---|---|
| <ul style="list-style-type: none"> ● OPTICAL OPTIONS
 High Impact Clear Prismatic Acrylic
 American Louver® Injection Molded Lens | SUFFIX
DRPA
IML | <ul style="list-style-type: none"> ● ELECTRICAL OPTIONS
 Emergency Battery Pack
 External Line Fusing (HLR/GLR)
 Radio Interference Filters
 Night Light (Fluor. 7W or 9W) | SUFFIX
BP*
ELF
RIF
NL9 | <ul style="list-style-type: none"> ● BALLAST OPTIONS
 Electronic T5
 Electronic T5HO
 Electronic Step Dimming T5HO
 Electronic T8
 Electronic Step Dimming T8 | SUFFIX
E5*
E5H
ESDM5H
E8*
ESDM8* |
| <ul style="list-style-type: none"> ● MECHANICAL OPTIONS
 Tamper Proof Screws
 (Hex Socket With Post) | SUFFIX
TP | *See Appropriate Reference Page | | <ul style="list-style-type: none"> ● ACCESSORIES
 Fixture Suspension System | CAT.NO.
* |

SPECIFICATIONS

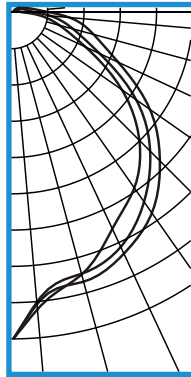
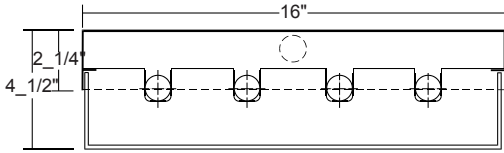
- **TYPE**
Surface mounted shallow wrap around luminaire with extruded lens and injection molded ends. Spring loaded hinge and latch. Opens from either side for easy relamping.
- **CONSTRUCTION**
20 ga. cold rolled steel welded housing.
- **FINISH**
Baked white powder coated finish, minimum reflectance 90%, painted after fabrication.
- **OPTICS**
Clear prismatic acrylic lens with injection molded clear prismatic ends, flat white acrylic diffuser with injection molded white end, or clear prismatic injection molded lens.
- **WIRING**
120v 60Hz., 277v 60Hz., UNV (universal voltage 120v thru 277v.) or as otherwise specified.
- **LABELS**
U.L. Listed. Suitable for damp locations.



PHOTOMETRIC DATA

WSM200-4-4R-PA-E8

TEST NO.=LA-T0255
 LAMP TYPE=F032T8
 NO. OF LAMP=4
 LUMENS PER LAMP=2900
 WATTS PER LAMP=32
 BALLAST FACTOR=1
 PHOTOMETRY TYPE=C



CANDLEPOWER

ANGLE	END	45	CROSS
0	3069	3069	3069
5	2784	2712	2734
15	2538	2538	2616
25	2226	2418	2488
35	1995	2152	2283
45	1673	1818	1949
55	1233	1399	1560
65	731	879	1076
75	440	574	776
85	216	343	526
90	96	214	348
95	70	160	245
105	49	108	151
115	37	78	98
125	25	56	77
135	17	42	58
145	10	29	39
155	8	18	23
165	4	7	11
175	0	3	0
180	0	0	0

ZONAL LUMEN SUMMARY

DEGREES	LUMENS	% LAMP	% FIXTURE
0-30	2093	18.0	24.8
0-40	3441	29.7	40.8
0-60	6100	52.6	72.3
0-90	7962	68.6	94.3
90-120	372	3.2	4.4
90-150	467	4.0	5.5
90-180	477	4.1	5.7
0-180	8439	72.8	100.0

Lumen Output = 8439 lumens
 Luminaire Efficiency = 72.8%

SPACING CRITERION

ALONG	ACROSS
1.02	1.16

This space is intentionally left blank.

This space is intentionally left blank.

This space is intentionally left blank.

