

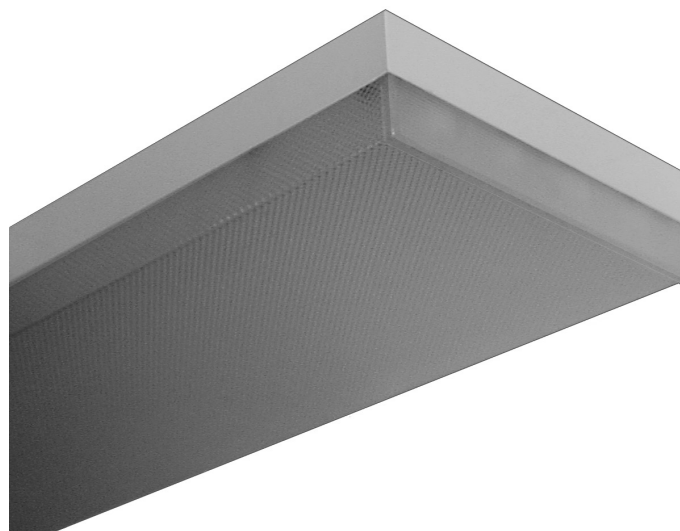


# WRAPAROUND

## WSM200 SERIES



### Square Metal Sided Wrap Luminaire



- 16" Width Square Metal Sided Wrap Luminaire
- 20 Ga. Cold Rolled Steel Housing
- Welded and Painted After Fabrication
- Lens Secured By Torsion Springs
- Pendant Mountable
- Suitable for Damp Locations
- Available with:
  - Fluorescent, LED and LED T8 (Internally Driven)
  - Variety of Lenses
  - Tamper Proof Screws
  - Emergency Battery Pack



Photometric Data and IES Files are Available on [www.lalighting.com](http://www.lalighting.com)



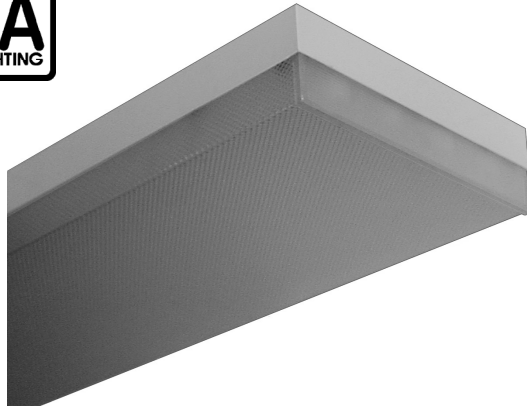
**LOS ANGELES LIGHTING MFG. CO.**

10141 OLNEY ST. / EL MONTE, CA 91731

TEL : 626-454-8300 FAX : 626-454-8399

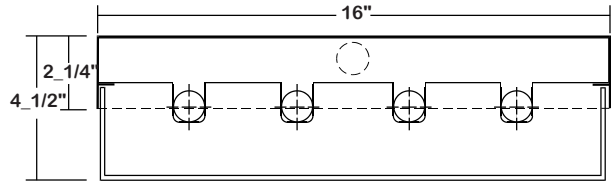
[www.lalighting.com](http://www.lalighting.com)

# WRAPAROUND - LED T8 (Internally Driven)



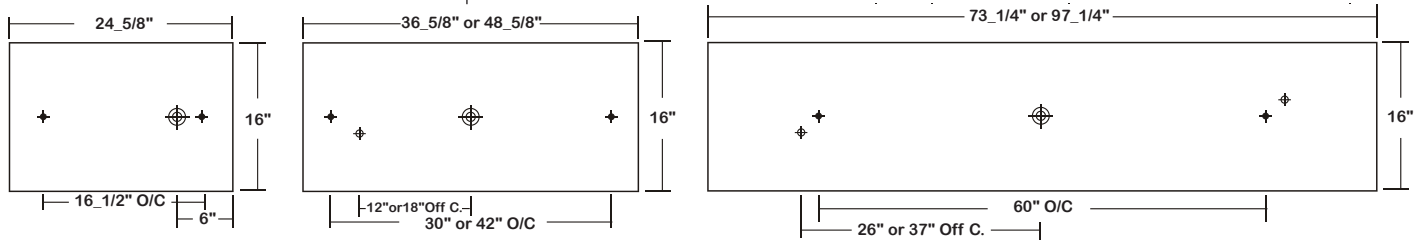
## WSM200 SERIES - LED T8

### CROSS SECTION



### BACK PLATE

◆ 11/16" STEM MTG. K.O.    ⊕ 7/8" OFFSET K.O.    ⊕ 2" K.O.



### CATALOG NUMBER

NOMINAL LENGTH	TOTAL MODULES	NOMINAL LENGTH	TOTAL MODULES	NOMINAL LENGTH	TOTAL MODULES
WSM200-2-2Lx	2'	2	WSM200-3-2Lx	2'	3
WSM200-2-3Lx	3'	2	WSM200-3-3Lx	3'	3
WSM200-2-4Lx	4'	2	WSM200-3-4Lx	4'	3
WSM200-2-6LxT	6'	4	WSM200-3-6LxT	6'	6
WSM200-2-8LxT	8'	4	WSM200-3-8LxT	8'	6
			WSM200-4-2Lx	2'	4
			WSM200-4-3Lx	3'	4
			WSM200-4-4Lx	4'	4
			WSM200-4-6LxT	6'	8
			WSM200-4-8LxT	8'	8

### TS2 - LED Luminaire

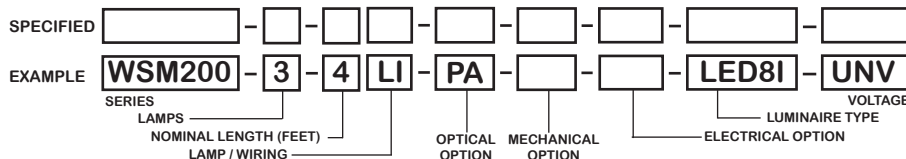
#### On/Off Safety Switch



- Easily accessible on exterior of wire way.
- Allows individual fixture to be switched ON/OFF during re-lamping or Maintenance.

- Prevents damage to lamp and electrical shock during lamping and re-lamping.
- Allows safe entry to wire way channel where power connector can be disconnected for maintenance to fixture.

### ORDERING GUIDE



### LAMP / WIRING

**LI = LED T8 internal driver light tube.**

Both ends powered.  
Shunted sockets used.



**LR = LED T8 internal driver light tube.**

Single end powered.  
Non-shunted sockets used.



### OPTIONS AND ACCESSORIES

#### OPTICAL OPTIONS

High Impact Clear Prismatic Acrylic    SUFFIX DRPA  
American Louver® Injection Molded Lens    SUFFIX IML

#### MECHANICAL OPTIONS

Tamper Proof Screws

#### SUFFIX TP

#### ELECTRICAL OPTIONS

LED Luminaire ON/OFF Safety Switch

#### SUFFIX TS2

#### ACCESSORIES

Fixture Suspension System

#### CAT. NO. \*

\*See appropriate reference page

### SPECIFICATIONS

#### TYPE

Surface mounted shallow wrap around luminaire with extruded lens and injection molded ends. Spring loaded hinge and latch. Opens from either side for easy relamping.

#### CONSTRUCTION

20 ga. cold rolled steel welded housing.

#### FINISH

Baked white powder coated finish, minimum reflectance 90%, painted after fabrication.

#### OPTICS

Clear prismatic acrylic lens with injection molded clear prismatic ends or flat white acrylic diffuser with injection molded white end.

#### WIRING

Operate LED T8 internally driven light tube(s)\*\*.

#### LABELS

Suitable for damp locations.

\*\* Lamp(s) by others.

