



SURFACE MOUNT LED

MHL320 (2X8) SERIES (2X2 AND 2X4 AVAILABLE)

HINGE AND LATCH DOOR FRAME LUMINAIRE

DATE	
JOB	

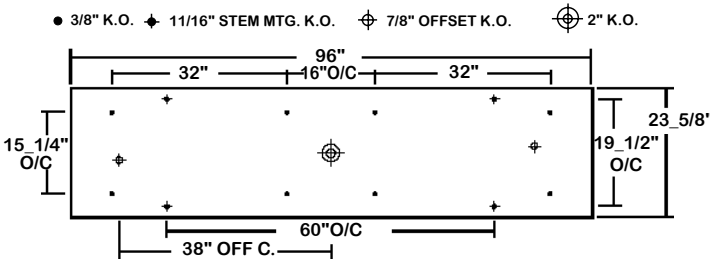
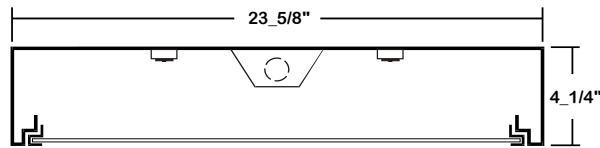
WWW.LALIGHTING.COM
626-454-8300

APPLICATIONS

COMMERCIAL, CLASSROOM



DIMENSIONS



SPECIFICATIONS

FEATURES

- Surface mounted LED luminaire
- 0-10V dimming driver standard (other dimming types available)
- Controls and sensors available
- Wireless control options (Lutron, EnOcean, ZigBee, etc.)
- Supports California Title 24 compliance
- Suitable for damp locations
- Additional lumen packages and color temperatures available
- Full customization available upon request

CONSTRUCTION

- 20 ga. cold rolled steel welded housing
- 20 ga. cold rolled steel door frame (extruded aluminum in various finishes available) secured by T-hinges and positive spring loaded latches
- One way polyurethane gasket (additional options available)
- Tamper proof screws available

OPTICAL

- Clear prismatic acrylic lens
- Variety of lenses available

ELECTRICAL

- High efficiency drivers coupled with long-life LEDs
- Service life greater than 50,000 hours (L70)
- Universal voltage 120V through 277V (347V / 480V available)
- Emergency battery pack available

FINISH

- Baked white powder coated finish / painted after fabrication
- Minimum reflectance 90%
- Custom colors available

CUSTOM COLORS

BLK - Matte Black

CS - Camaro Silver

BZ - Statuary Bronze

Variety of RAL colors & Axalta/DuPont colors available upon request.

CERTIFICATIONS



ORDERING INFORMATION

EXAMPLE: MHL320-16-8L-FSW-FPA2-TP-BPL-1DRDM-UNV-2/840

SERIES	LED LUMEN PACKAGE	NOMINAL LENGTH	DOOR FRAME	OPTICAL	MECHANICAL	ELECTRICAL	DRIVER	VOLTAGE	# OF LED ROW	CRI / CCT
MHL320		8L						UNV	2	
MHL320 Hinge and Latch Door Frame LED Luminaire	8 Nom. 8000 Lumens 12 Nom. 12000 Lumens 16 Nom. 16000 Lumens 28 Nom. 28000 Lumens 32 Nom. 32000 Lumens <i>Additional Lumen Packages Available</i>	8L 2' x 8'	See DOOR FRAME for Options	FPA2 Frosted Prismatic Acrylic 0.125 FFA Frosted Flat Acrylic PA Clear Prismatic Acrylic <i>Additional Optical Options</i>	TP Tamper Proof Screws (Hex Socket with Post) GSK Gasket *Leave Blank if Not Specified See GASKET for Options <i>Additional Mechanical Options</i>	BPL Emergency Battery Pack SDxx Step Dimming Control *Leave Blank if Not Specified <i>Additional Electrical Options</i>	1DRDM 0-10V One Dimming Driver <i>Additional Driver Options</i>	UNV 120V-277V *Additional Voltages Available	2 Two LED Rows	835 80+CRI / 3500K Color Temp. 840 80+CRI / 4000K Color Temp. 850 80+CRI / 5000K Color Temp. *Additional Color Temp. Available



Los Angeles Lighting Mfg. Co.

Headquarters
10141 Olney Street
El Monte, CA 91731
Made in the USA

Contact Us
T: 626-454-8300
F: 626-454-8399
www.lalighting.com

Due to continued product improvements and enhancements, Los Angeles Lighting Manufacturing Company reserves the right to alter specifications, dimensions, data, and/or materials without notice. Please visit our website to view the most current information.

Revised 07-31-17

SYSTEM DATA

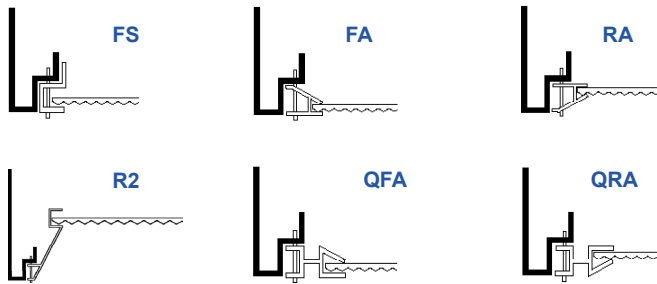
NOMINAL SIZE	LED LUMEN PACKAGE	DOOR FRAME STYLE	OPTICAL OPTION	CRI / CCT	DELIVERED LUMENS	SYSTEM WATTS	LUMINAIRE EFFICACY	FLUORESCENT EQUIVALENT	IES FILES
2' x 8'	8000 lm	FS	PA	840	*	*	*	4-F32T8, 2-F54T5HO	*
	12000 lm	FS	PA		*	*	*	6-F32T8	*
	16000 lm	FS	PA		*	*	*	8-F32T8M 4-F54T5HO	*
	28000 lm	FS	PA		*	*	*	12-F32T8, 6-F54T5HO	*
	32000 lm	FS	PA		*	*	*	8-F54T5HO	*

NOTE:
 System data above is based on 120V input voltage.
 Actual performance may differ as a result of end-user environment and application.
 This fixture has been tested and listed in accordance with UL Standards. L.A. Lighting certifies that it will operate safely when installed properly, and within an ambient temperature range from -20°C to 40°C.

Additional lumen packages and color temperatures available.

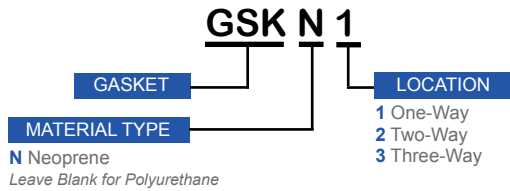
DOOR FRAME

CROSS SECTION



- FS W**
- FINISHES**
W White Enamel
B Black Enamel
N Natural Anodized Aluminum
 (Only FA / RA / R2 / QFA / QRA styles)
- STYLES**
FS Flat Steel
FA Flat Extruded Aluminum
RA 5/8" Regressed Extruded Aluminum
R2 2" Regressed Extruded Aluminum
QFA Flat Extruded Aluminum-Black Reveal
QRA 1/2" Regressed Extruded Aluminum-Black Reveal

GASKET



	1 - WAY	2 - WAY	3 - WAY
T-BAR			
TRIM FLANGE			



Los Angeles Lighting Mfg. Co.

Headquarters
 10141 Olney Street
 El Monte, CA 91731
 Made in the USA

Contact Us
 T: 626-454-8300
 F: 626-454-8399
 www.lalighting.com

Due to continued product improvements and enhancements, Los Angeles Lighting Manufacturing Company reserves the right to alter specifications, dimensions, data, and/or materials without notice. Please visit our website to view the most current information.