



# WRAPAROUND



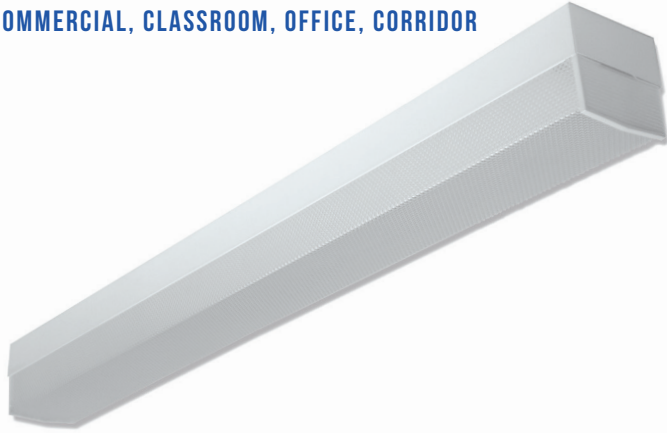
**WCP100 (8FT)** SERIES (4' AVAILABLE)  
HIGH IMPACT SQUARE WRAPAROUND LUMINAIRE

DATE	
JOB	

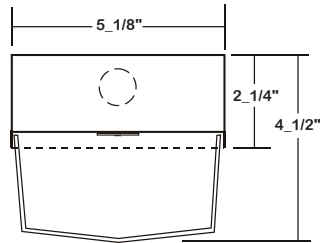
WWW.LALIGHTING.COM  
626-454-8300

## APPLICATIONS

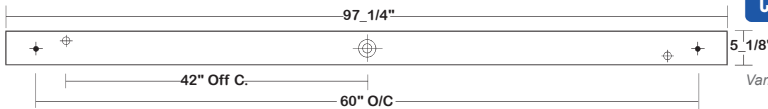
COMMERCIAL, CLASSROOM, OFFICE, CORRIDOR



## DIMENSIONS



- ✦ 11/16" STEM MTG. K.O.
- ✦ 7/8" OFFSET K.O.
- ✦ 2" K.O.



## SPECIFICATIONS

### FEATURES

- Surface / pendant mounted LED luminaire
- 0-10V dimming driver standard (other dimming types available)
- Controls and sensors available
- Wireless control options (Lutron, EnOcean, ZigBee, etc.)
- Supports California Title 24 compliance
- Suitable for damp locations
- Additional lumen packages and color temperatures available
- Full customization available upon request

### CONSTRUCTION

- 22 ga. cold rolled steel welded housing
- Finger actuated, spring-loaded stamped steel hinges and latch catch located on each lens end plate
- Neoprene gasket available
- Tamper proof screws available
- Wet location optional

### OPTICAL

- High impact clear prismatic acrylic lens (minimum 0.125 thickness)
- Lens secured by spring loaded scissor clips

### ELECTRICAL

- High efficiency drivers coupled with long-life LEDs
- Service life greater than 50,000 hours (L70)
- Universal voltage 120V through 277V (347V / 480V available)
- Emergency battery pack available

### FINISH

- Baked white powder coated finish
- Painted after fabrication
- Minimum reflectance 90%
- Custom colors available

## CUSTOM COLORS

BLK - Matte Black

CS - Camaro Silver

BZ - Statuary Bronze

Variety of RAL colors & Axalta/DuPont colors available upon request.



## ORDERING INFORMATION

EXAMPLE: WCP100-8-8L-DRP3-TP-BPL1.5-DRDM-UNV-1/840

SERIES	LED LUMEN PACKAGE	NOMINAL LENGTH	OPTICAL	MECHANICAL	ELECTRICAL	DRIVER	VOLTAGE	# OF LED ROW	CRI / CCT
<b>WCP100</b>		<b>8L</b>					<b>UNV</b>	<b>1</b>	
<b>WCP100</b> High Impact Square Wraparound LED Luminaire	<b>4</b> Nom. 000 Lumens <b>6</b> Nom. 6000 Lumens <b>8</b> Nom. 8000 Lumens <b>16</b> Nom. 16000 Lumens <i>*Additional Lumen Packages Available</i>	<b>8L</b> 8'	<b>DRP3</b> High Impact Clear Prismatic Acrylic Min. 0.125 Thickness	<b>TP</b> Tamper Proof Screws (Hex Socket with Post)  <b>WL</b> Wet Location (Electro Galvanized Steel Housing)  <b>GSK</b> Gasket  *Leave Blank if Not Specified <i>Additional Mechanical Options</i>	<b>BPL1.5</b> Emergency Battery Pack  <b>MS</b> Motion Sensor  *Leave Blank if Not Specified <i>Additional Motion Sensor Options</i> <i>Additional Electrical Options</i>	<b>DRDM</b> 0-10V Dimming Driver  <i>Additional Driver Options</i>	<b>UNV</b> 120V-277V  *Additional Voltages Available	<b>1</b> One LED Row	<b>835</b> 80+CRI / 3500K Color Temp.  <b>840</b> 80+CRI / 4000K Color Temp.  <b>850</b> 80+CRI / 5000K Color Temp.  *Additional Color Temp. Available



**Los Angeles Lighting Mfg. Co.**  
Contact Us  
T: 626-454-8300  
F: 626-454-8399  
www.lalighting.com  
10141 Olney Street  
El Monte, CA 91731  
Made in the USA



Due to continued product improvements and enhancements, Los Angeles Lighting Manufacturing Company reserves the right to alter specifications, dimensions, data, and/or materials without notice. Please visit our website to view the most current information.

© 2022 LOS ANGELES LIGHTING MANUFACTURING CO. ALL RIGHTS RESERVED.

Revised: 09/13/17



## SYSTEM DATA

NOMINAL SIZE	LED LUMEN PACKAGE	CRI / CCT	DELIVERED LUMENS	SYSTEM WATTS	LUMINAIRE EFFICACY	FLUORESCENT EQUIVALENT	IES FILES
8'	4000 lm	840	3832 lm	32.9 W	116.5 lm/W	2-F32T8	<a href="#">LA-T2599</a>
	6000 lm		5380 lm	52.3 W	102.9 lm/W	3-F32T8	<a href="#">LA-T2600</a>
	8000 lm		7200 lm	67.6 W	106.5 lm/W	4-F32T8, 2-F54T5HO	<a href="#">LA-T2601</a>
	16000 lm		14411 lm	133.1 W	108.3 lm/W	8-F32T8, 4-F54T5HO	<a href="#">LA-T2602</a>

**NOTE:**

System data above is based on 120V input voltage.

Actual performance may differ as a result of end-user environment and application.

This fixture has been tested and listed in accordance with UL Standards. L.A. Lighting certifies that it will operate safely when installed properly, and within an ambient temperature range from -20°C to 40°C.

Additional lumen packages and color temperatures available.



**Los Angeles Lighting Mfg. Co.**

Contact Us

T: 626-454-8300

F: 626-454-8399

[www.lalighting.com](http://www.lalighting.com)

10141 Olney Street

El Monte, CA 91731

Made in the USA



Due to continued product improvements and enhancements, Los Angeles Lighting Manufacturing Company reserves the right to alter specifications, dimensions, data, and/or materials without notice. Please visit our website to view the most current information.

© 2022 LOS ANGELES LIGHTING MANUFACTURING CO. ALL RIGHTS RESERVED.

Revised: 09/13/17



MADE IN THE USA  
BAA Compliant