



# WRAPAROUND



## WSE251 (8FT) SERIES (4' AVAILABLE)

SENSOR CONTROLLED PARKING STRUCTURE WRAPAROUND LUMINAIRE

DATE	
JOB	

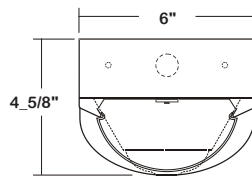
WWW.LALIGHTING.COM  
626-454-8300

### APPLICATIONS

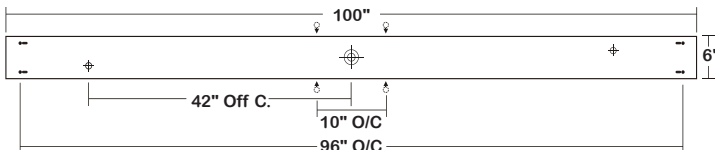
COMMERCIAL, PARKING STRUCTURE



### DIMENSIONS



- V-HOOK
- ⊕ 7/8" OFFSET K.O.
- ⊕ 2" K.O.
- 7/8" K.O. ON SIDE OF HOUSING FOR 1/2" CONDUIT



### SPECIFICATIONS

#### FEATURES

- Surface / suspension mounted LED luminaire (Aircraft Cable Mounting System available)
- 0-10V dimming driver standard (other dimming types available)
- Controls and sensors available
- Wireless control options (Lutron, EnOcean, ZigBee, etc.)
- Supports California Title 24 compliance
- Suitable for damp locations
- Additional lumen packages and color temperatures available
- Full customization available upon request

#### CONSTRUCTION

- Aluminum housing with riveted end plates
- Side knockouts for 1/2" conduit
- End neoprene gasket

#### OPTICAL

- 4' snap-on frosted acrylic radial lens (two per fixture)

#### ELECTRICAL

- Wide range infrared sensor with several mounting options and integral light level daylighting feature from 2-55 fc.
- High efficiency drivers coupled with long-life LEDs
- Service life greater than 50,000 hours (L70)
- Universal voltage 120V through 277V (347V / 480V available)
- Emergency battery pack available

#### FINISH

- Baked white polyester finish
- Minimum reflectance 90%

#### WARRANTY

- 5-Year limited warranty standard. 10-Year limited warranty also available

### ORDERING INFORMATION

EXAMPLE: WSE251-4-8L-BPL1.5-MSxx-DRDM-UNV-1/840

SERIES	LED LUMEN PACKAGE	NOMINAL LENGTH	ELECTRICAL	SENSOR CONFIGURATION	DRIVER	VOLTAGE	# OF LED ROW	CRI / CCT
<b>WSE251</b>		<b>8L</b>				<b>UNV</b>	<b>1</b>	
<b>WSE251</b> Sensor Controlled Parking Structure Wraparound LED Luminaire	<b>4</b> Nom. 4000 Lumens <b>8</b> Nom. 8000 Lumens <b>12</b> Nom. 12000 Lumens <b>16</b> Nom. 16000 Lumens <i>*Additional Lumen Packages Available</i>	<b>8L</b> 8'	<b>BPL1.5</b> 1500lm Emergency Battery Pack  <i>*Leave Blank if Not Specified</i> <i>Additional Electrical Options</i>	<b>MSxx</b> Motion Sensor  <b>WLC(xxxxx)</b> Wireless Control  <i>*Leave Blank if Not Specified</i> <i>Note: For no sensor, refer to WSE250.</i>  See SENSOR for Options CONFIGURATION	<b>DRDM</b> 0-10V Dimming Driver  <i>Additional Driver Options</i>	<b>UNV</b> 120V-277V  <i>*Additional Voltages Available</i>	<b>1</b> One LED Row	<b>835</b> 80+CRI / 3500K Color Temp.  <b>840</b> 80+CRI / 4000K Color Temp.  <b>850</b> 80+CRI / 5000K Color Temp.  <i>*Additional Color Temp. Available</i>
Standard options for WSE251 shown above. For additional options, including lumen packages, controls, lenses, switches, finishes, and more, visit <a href="http://www.lalighting.com/resources">www.lalighting.com/resources</a> or contact customer service.								



**Los Angeles Lighting Mfg. Co.**  
Contact Us  
T: 626-454-8300  
F: 626-454-8399  
www.lalighting.com  
10141 Olney Street  
El Monte, CA 91731  
Made in the USA



Due to continued product improvements and enhancements, Los Angeles Lighting Manufacturing Company reserves the right to alter specifications, dimensions, data, and/or materials without notice. Please visit our website to view the most current information.

© 2022 LOS ANGELES LIGHTING MANUFACTURING CO. ALL RIGHTS RESERVED.

Revised: 07/17/23



**SYSTEM DATA**

NOMINAL SIZE	LED LUMEN PACKAGE	CRI / CCT	STEP DIMMING	DELIVERED LUMENS	SYSTEM WATTS	LUMINAIRE EFFICACY	FLUORESCENT EQUIVALENT	IES FILES
8'	4000 lm	840	Full Load	3780 lm	31.9 W	118.5 lm/W	2-F32T8	<a href="#">LA-T2922</a>
			SD50	1987 lm	16.0 W	124.2 lm/W		<a href="#">LA-T2923</a>
	8000 lm		Full Load	7616 lm	60.9 W	125.1 lm/W	4-F32T8, 2-F54T5HO	<a href="#">LA-T2924</a>
			SD50	3969 lm	29.9 W	132.7 lm/W		<a href="#">LA-T2925</a>
	12000 lm		Full Load	10626 lm	89.4 W	118.9 lm/W	6-F32T8	<a href="#">LA-T2926</a>
			SD50	5657 lm	45.1 W	125.4 lm/W		<a href="#">LA-T2927</a>
	16000 lm		Full Load	14227 lm	125.6 W	127.4 lm/W	4-54T5HO, 4-F54T5HO	<a href="#">LA-T2928</a>
			SD50	7532 lm	61.0 W	123.5 lm/W		<a href="#">LA-T2929</a>

**NOTE:**

System data above is based on 120V input voltage.  
 Actual performance may differ as a result of end-user environment and application.  
 This fixture has been tested and listed in accordance with UL Standards. L.A. Lighting certifies that it will operate safely when installed properly, and within an ambient temperature range from -20°C to 40°C.

Additional lumen packages and color temperatures available.

**SENSOR CONFIGURATION**

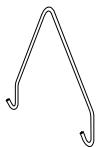
**MS (LOWE)**

	LENS	SHAPE	MOUNTING HEIGHT		COVERAGE
(LOWE)	Extra Wide	Cone	8~10 ft	2.4~3.0m	6X Height
(HI)	High Bay	Cone	15~30 ft	4.5~9.0m	3X Height
(LOW)	Standard	Round	8~20 ft.	2.4~6.0m	2X Height
(AIL)	Aisle Way	Arch	8~40 ft.	2.4~12.0m	3X Height

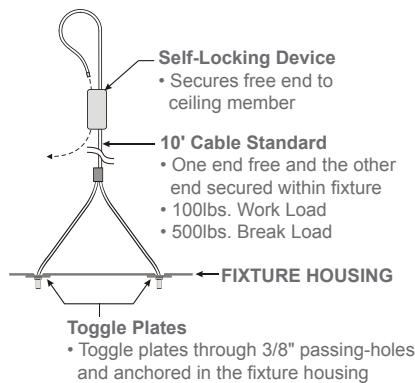
- MS** Turns light ON/OFF based on motion detection
- MSPC** Holds lights OFF when sufficient daylight is present regardless of motion detection
- MSPCD** Variably Dims output to desired footcandles through photocell. Low setting when unoccupied. Full on with motion.

**ACCESSORIES**

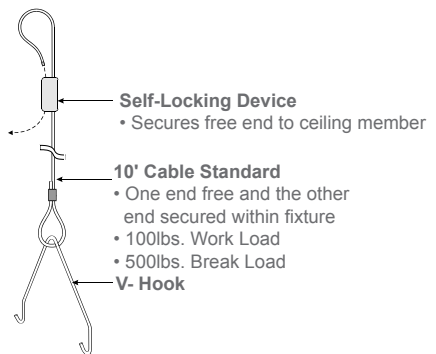
- V4**
- 4" Leg Height V-Hook
  - Two (2) per fixture



- YTCS10**
- Y-Toggle-End / Cable Suspension System



- V4CS10**
- V-Hook / Cable Suspension System
  - Cable set with V4 hooks



**Los Angeles Lighting Mfg. Co.**  
 Contact Us  
 T: 626-454-8300 10141 Olney Street  
 F: 626-454-8399 El Monte, CA 91731  
 www.lalighting.com Made in the USA



Due to continued product improvements and enhancements, Los Angeles Lighting Manufacturing Company reserves the right to alter specifications, dimensions, data, and/or materials without notice. Please visit our website to view the most current information.

© 2022 LOS ANGELES LIGHTING MANUFACTURING CO. ALL RIGHTS RESERVED.

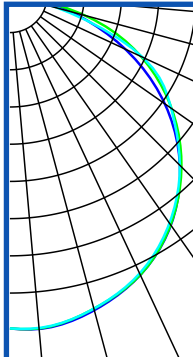
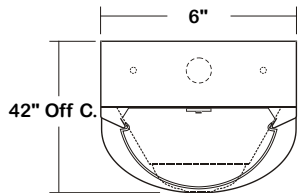
Revised: 07/17/23



**PHOTOMETRIC DATA - WSE251 SERIES**

**WSE251-4-8L-SD50-DRDM(ULT)-UNV-1S/840(SAM)**

TEST NO.=LA-T2713  
 LED TYPE= 24 LED MODULE  
 NO. OF MODULE=4  
 SYSTEM WATT (W)=34.6  
 CRI ≥ 80  
 L70(Hrs.) ≥ 50,000  
 PHOTOMETRY TYPE=C



**CANDLEPOWER**

ANGLE	END	45	CROSS
0	1271	1271	1271
5	1278	1276	1274
15	1244	1238	1237
25	1177	1176	1171
35	1070	1069	1061
45	917	925	917
55	721	753	751
65	486	552	559
75	240	297	197
85	64	34	21
90	7	23	25
95	2	9	16
105	0	3	3
115	0	1	2
125	0	0	1
135	0	0	0
145	0	0	0
155	0	0	0
165	0	0	0
175	0	0	0
180	0	0	0

**ZONAL LUMEN SUMMARY**

DEGREES	LUMENS	% LAMP	% FIXTURE
0-30	1017	23.6	25.9
0-40	1687	39.2	42.9
0-60	3069	71.2	78.1
0-90	3911	90.8	99.6
90-120	17	0.4	0.4
90-150	17	0.4	0.4
90-180	17	0.4	0.4
0-180	3929	91.2	100.0

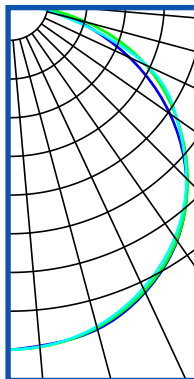
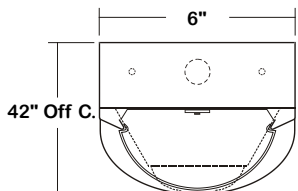
Luminaire Output= 3929 lumens  
 Luminaire Efficacy = 113.6 LPW

**SPACING CRITERION**

ALONG	ACROSS
1.31	1.30

**WSE251-4(STEP)-8L-SD50-DRDM(ULT)-UNV-1S/840(SAM)  
 50% Dimmed**

TEST NO.=LA-T2714  
 LED TYPE= 24 LED MODULE  
 NO. OF MODULE=4  
 SYSTEM WATT (W)=18.5  
 CRI ≥ 80  
 L70(Hrs.) ≥ 50,000  
 PHOTOMETRY TYPE=C



**CANDLEPOWER**

ANGLE	END	45	CROSS
0	672	672	672
5	667	669	668
15	654	652	649
25	619	616	610
35	563	562	555
45	482	486	482
55	377	394	394
65	255	291	293
75	127	154	104
85	34	18	11
90	4	12	12
95	1	12	8
105	0	5	2
115	0	2	1
125	0	1	0
135	0	0	0
145	0	0	0
155	0	0	0
165	0	0	0
175	0	0	0
180	0	0	0

**ZONAL LUMEN SUMMARY**

DEGREES	LUMENS	% LAMP	% FIXTURE
0-30	533	23.6	25.9
0-40	885	39.2	43.0
0-60	1610	71.2	78.1
0-90	2052	90.8	99.6
90-120	9	0.4	0.4
90-150	9	0.4	0.4
90-180	9	0.4	0.4
0-180	2061	91.2	100.0

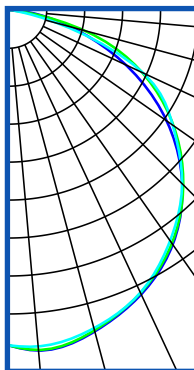
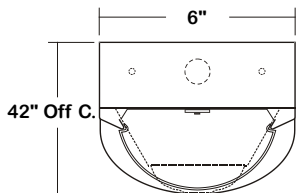
Luminaire Output= 2061 lumens  
 Luminaire Efficacy = 111.4 LPW

**SPACING CRITERION**

ALONG	ACROSS
1.30	1.29

**WSE251-8-8L-SD50-DRDM(PHI)-UNV-1S/840(SAM)**

TEST NO.=LA-T2715  
 LED TYPE= 32 LED MODULE  
 NO. OF MODULE=4  
 SYSTEM WATT (W)=69.6  
 CRI ≥ 80  
 L70(Hrs.) ≥ 50,000  
 PHOTOMETRY TYPE=C



**CANDLEPOWER**

ANGLE	END	45	CROSS
0	2381	2381	2381
5	2428	2424	2398
15	2363	2355	2339
25	2228	2217	2214
35	2063	2022	1999
45	1300	1754	1743
55	920	1430	1423
65	455	1047	1055
75	122	559	373
85	14	64	41
90	3	45	47
95	1	17	32
105	0	6	6
115	0	3	3
125	0	1	2
135	0	0	1
145	0	0	0
155	0	0	0
165	0	0	0
175	0	0	0
180	0	0	0

**ZONAL LUMEN SUMMARY**

DEGREES	LUMENS	% LAMP	% FIXTURE
0-30	1925	23.6	25.9
0-40	3193	39.1	42.9
0-60	5815	71.3	78.1
0-90	7409	90.8	99.6
90-120	32	0.4	0.4
90-150	33	0.4	0.4
90-180	33	0.4	0.4
0-180	7442	91.2	100.0

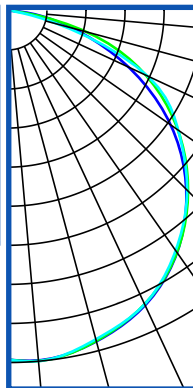
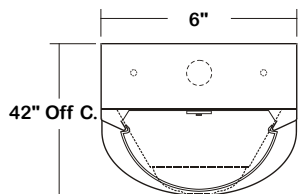
Luminaire Output= 7442 lumens  
 Luminaire Efficacy = 106.9 LPW

**SPACING CRITERION**

ALONG	ACROSS
1.32	1.31

**WSE251-8(STEP)-8L-SD50-DRDM(PHI)-UNV-1S/840(SAM)  
 50% Dimmed**

TEST NO.=LA-T2716  
 LED TYPE= 32 LED MODULE  
 NO. OF MODULE=4  
 SYSTEM WATT (W)=33.7  
 CRI ≥ 80  
 L70(Hrs.) ≥ 50,000  
 PHOTOMETRY TYPE=C



**CANDLEPOWER**

ANGLE	END	45	CROSS
0	1297	1297	1297
5	1305	1307	1308
15	1273	1271	1265
25	1208	1204	1204
35	1098	1097	1089
45	938	948	943
55	740	772	774
65	450	566	573
75	248	304	201
85	65	34	22
90	7	24	25
95	2	9	17
105	0	3	2
115	0	2	3
125	0	1	2
135	0	0	1
145	0	0	0
155	0	0	0
165	0	0	0
175	0	0	0
180	0	0	0

**ZONAL LUMEN SUMMARY**

DEGREES	LUMENS	% LAMP	% FIXTURE
0-30	1043	23.6	25.9
0-40	1730	39.2	42.9
0-60	3148	71.2	78.1
0-90	4011	90.8	99.6
90-120	17	0.4	0.4
90-150	18	0.4	0.4
90-180	18	0.4	0.4
0-180	4029	92.2	100.0

Luminaire Output= 4029 lumens  
 Luminaire Efficacy = 119.6 LPW

**SPACING CRITERION**

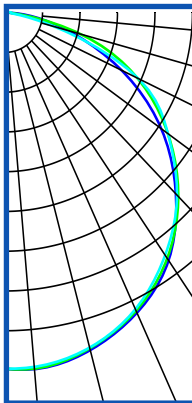
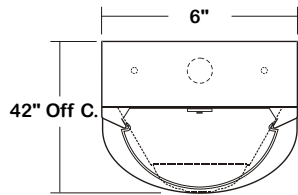
ALONG	ACROSS
1.31	1.30



**PHOTOMETRIC DATA - WSE251 SERIES**

**WSE251-12-8L-SD50-DRDM(ULT)-UNV-1S/840(SAM)**

TEST NO.=LA-T2717  
 LED TYPE= 72 LED MODULE  
 NO. OF MODULE=4  
 SYSTEM WATT (W)=91.6  
 CRI ≥ 80  
 L70(Hrs.) ≥ 50,000  
 PHOTOMETRY TYPE=C



**CANDLEPOWER**

ANGLE	END	45	CROSS
0	3579	3579	3579
5	3596	3591	3573
15	3510	3492	3484
25	3327	3305	3284
35	3040	3014	3288
45	2575	2612	2975
55	2033	2120	2120
65	1372	1557	1569
75	686	836	555
85	186	97	63
90	20	69	68
95	5	26	46
105	1	09	8
115	0	4	5
125	0	1	3
135	0	0	1
145	0	0	0
155	0	0	0
165	0	0	0
175	0	0	0
180	0	0	0

**ZONAL LUMEN SUMMARY**

DEGREES	LUMENS	% LAMP	% FIXTURE
0-30	2863	23.7	25.9
0-40	4755	39.4	42.9
0-60	8650	71.7	78.1
0-90	11028	91.4	99.6
90-120	47	0.4	0.4
90-150	49	0.4	0.4
90-180	49	0.4	0.4
0-180	11077	91.8	100.0

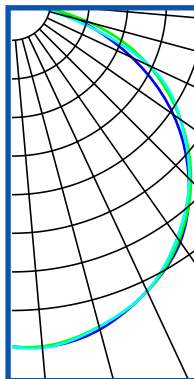
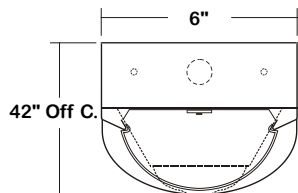
Luminaire Output= 11077 lumens  
 Luminaire Efficacy = 120.9 LPW

**SPACING CRITERION**

ALONG	ACROSS
1.31	1.30

**WSE251-12(STEP)-8L-SD50-DRDM(ULT)-UNV-1S/840(SAM)**  
 50% Dimmed

TEST NO.=LA-T2718  
 LED TYPE= 72 LED MODULE  
 NO. OF MODULE=4  
 SYSTEM WATT (W)=46  
 CRI ≥ 80  
 L70(Hrs.) ≥ 50,000  
 PHOTOMETRY TYPE=C



**CANDLEPOWER**

ANGLE	END	45	CROSS
0	1867	1868	1867
5	1876	1872	1880
15	1836	1820	1822
25	1728	1730	1727
35	1587	1575	1558
45	1352	1369	1356
55	1065	1112	1112
65	717	816	820
75	361	438	290
85	98	50	31
90	11	35	35
95	3	14	24
105	1	5	5
115	0	2	3
125	0	0	1
135	0	0	0
145	0	0	0
155	0	0	0
165	0	0	0
175	0	0	0
180	0	0	0

**ZONAL LUMEN SUMMARY**

DEGREES	LUMENS	% LAMP	% FIXTURE
0-30	1496	23.7	25.8
0-40	2485	39.4	42.9
0-60	4527	71.4	78.1
0-90	5772	91.4	99.6
90-120	25	0.4	0.4
90-150	25	0.4	0.4
90-180	25	0.4	0.4
0-180	5797	91.8	100.0

Luminaire Output= 5797 lumens  
 Luminaire Efficacy = 126.0 LPW

**SPACING CRITERION**

ALONG	ACROSS
1.31	1.30

