



SECURITY LED

WSE500 (2FT) SERIES (4' AVAILABLE)

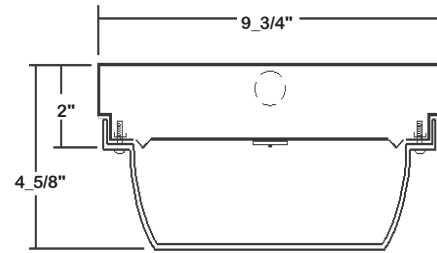
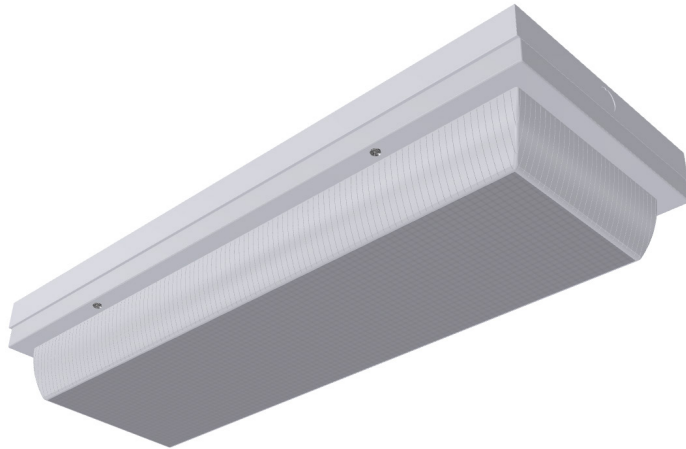
HIGH IMPACT WRAPAROUND SECURITY LUMINAIRE

DATE	
JOB	

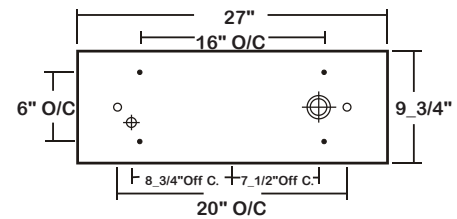
WWW.LALIGHTING.COM
626-454-8300

SURFACE / CEILING MOUNTED SECURITY LED LUMINAIRE

DIMENSIONS



• 3/8" MTG. K.O. ○ 11/16" STEM MTG. K.O. ⌀ 7/8" K.O. ⊕ 2" K.O.



APPLICATIONS

- Security, Vandal Resistant Areas, Commercial

FEATURES

- 0-10V dimming driver standard (See *DRIVER OPTIONS* for other dimming types)
- Supports California Title 24 compliance

OPTIONS

- Full customization available upon request
- Additional lumen packages and color temperatures available
- Controls and sensors available (See *SENSOR OPTIONS* for controls and sensors)
- Wireless control options available (See *SENSOR OPTIONS* for wireless controls)
- Emergency battery pack available (See *BATTERY PACK OPTIONS* for battery pack options)

SPECIFICATIONS

CONSTRUCTION

- 20 ga. cold rolled steel welded housing
- Spot welded seams and corners
- Lens secured by 4 stainless steel captive tamper resistant screws
- One-way cross-linked polyethylene gasket standard

FINISH

- Baked white powder coated finish / welded and painted after fabrication / minimum reflectance 90%

OPTICAL

- Clear prismatic polycarbonate lens (nominal 0.187) standard

ELECTRICAL

- High efficiency drivers coupled with long-life LEDs
- Service life greater than 50,000 hours (L70)
- Universal voltage 120V through 277V (347V / 480V available)
- Power Factor (PF) ≥ 0.9
- Total Harmonic Distortion (THD) ≤ 20%

LISTING

- UL USA and Canada listed / suitable for damp locations

WARRANTY

- 5-year limited warranty



Los Angeles Lighting Mfg. Co.
Headquarters
10141 Olney Street
El Monte, CA 91731
Made in the USA

Contact Us
T: 626-454-8300
F: 626-454-8399
www.lalighting.com



Due to continued product improvements and enhancements, Los Angeles Lighting Manufacturing Company reserves the right to alter specifications, dimensions, data, and/or materials without notice. Please visit our website to view the most current information.

MADE IN THE U.S.A.

Revised 01-09-19

WARNING

ORDERING INFORMATION

EXAMPLE: WSE500-3-2L-BPL10-1DRDM-UNV-1/840

SERIES	LED LUMEN PACKAGE	EFFICACY	NOMINAL LENGTH	ELECTRICAL	DRIVER	VOLTAGE	# OF LED ROW	CRI / CCT
WSE500			2L		1DRDM	UNV		
WSE500 High Impact Wraparound Security LED Luminaire	2 Nom. 2000 Lumens 3 Nom. 3000 Lumens 4 Nom. 4000 Lumens 6 Nom. 6000 Lumens *Additional Lumen Packages Available	(Blank) Standard HE High Efficacy (Only 2000 / 3000 / 6000 lumens System)	2L 2'	BPL10 Emergency Battery Pack, Constant 10W Nom. 1500 lm See BATTERY PACK OPTIONS for Options MSHxx Motion Sensor WLC(LED RU) EnOcean Wireless Control See SENSOR OPTIONS for Options *Leave Blank if Not Specified Additional Electrical Options	1DRDM 0-10V One Dimming Driver See DRIVER OPTIONS for Options	UNV 120V-277V See DRIVER OPTIONS for Options	1 One LED Row (Only 2000 / 3000 / 4000 lumens Systems) 2 Two LED Rows (Only 6000 lumens System)	830 80+CRI / 3000K Color Temp. 835 80+CRI / 3500K Color Temp. 840 80+CRI / 4000K Color Temp. 850 80+CRI / 5000K Color Temp. *Additional Color Temp. Available

SYSTEM DATA

THESE ARE THE MOST POPULAR LUMEN PACKAGES. PLEASE CONSULT FACTORY FOR ADDITIONAL SYSTEM DATA.

LED LUMEN PACKAGE	NORMAL AMBIENT TEMPERATURE PRODUCT CODE	DELIVERED LUMENS	SYSTEM WATTS	LUMINAIRE EFFICACY	AMBIENT TEMP.	FLUORESCENT / HID / CFL EQUIVALENT	IES FILES
2000 Lumens (Nominal)	WSE500-2-2L-1DRDM-UNV-1/840	2001 lm	16.7 W	120.1 lm/W	-20°C / 35°C	1-F32T8	*
3000 Lumens (Nominal)	WSE500-3-2L-1DRDM-UNV-1/840	2860 lm	26.0 W	110.0 lm/W	-20°C / 35°C	2-F32T8, 1-F54T5HO	LA-T3189
4000 Lumens (Nominal)	WSE500-4-2L-1DRDM-UNV-1/840	3862 lm	26.9 W	143.6 lm/W	-20°C / 35°C	3-F32T8	*
6000 Lumens (Nominal)	WSE500-6-2L-1DRDM-UNV-2/840	5720 lm	52.3 W	109.3 lm/W	-20°C / 35°C	4-F32T8, 2-F54T5HO	*

LED LUMEN PACKAGE	NORMAL AMBIENT TEMPERATURE (HIGH EFFICACY) PRODUCT CODE	DELIVERED LUMENS	SYSTEM WATTS	LUMINAIRE EFFICACY	AMBIENT TEMP.	FLUORESCENT / HID / CFL EQUIVALENT	IES FILES
2000 Lumens (Nominal)	WSE500-2HE-2L-1DRDM-UNV-1/840	1978 lm	13.0 W	152.6 lm/W	-20°C / 35°C	1-F32T8	*
3000 Lumens (Nominal)	WSE500-3HE-2L-1DRDM-UNV-1/840	2934 lm	19.8 W	148.1 lm/W	-20°C / 35°C	2-F32T8, 1-F54T5HO	*
6000 Lumens (Nominal)	WSE500-6HE-2L-1DRDM-UNV-2/840	5868 lm	39.6 W	148.1 lm/W	-20°C / 35°C	3-F32T8	*

NOTE:
System data is based on 120V input voltage. Actual performance may differ as a result of end-user environment and application.

This fixture has been tested and listed in accordance with UL Standards. L.A. Lighting certifies that it will operate safely when installed properly, and within an ambient temperature range noted in the system data table.

Additional lumen packages and color temperatures available.

PERFORMANCE DATA

[VIEW PHOTOMETRICS](#)



Los Angeles Lighting Mfg. Co.
 Headquarters
 10141 Olney Street
 El Monte, CA 91731
 Made in the USA

Contact Us
 T: 626-454-8300
 F: 626-454-8399
www.lalighting.com



Due to continued product improvements and enhancements, Los Angeles Lighting Manufacturing Company reserves the right to alter specifications, dimensions, data, and/or materials without notice. Please visit our website to view the most current information.

MADE IN THE U.S.A.

Revised 01-09-19

WARNING

SENSOR OPTIONS

HIGH FREQUENCY - INTERNALLY MOUNTED BEHIND FIXTURE LENS

MSHPC - Motion Sensor High Frequency (Microwave) with Photocell Option

- Super high frequency motion sensor (also known as microwave sensor) which detects movement when installed behind low density fixture materials, such as polycarbonate, acrylic and glass diffusers
- Holds lights OFF when sufficient daylight is present regardless of motion detection
- Selectable sensitivity and detection area
- Universal Voltage (120V-277V)
- Photocell is disabled by default

MSH - Motion Sensor High Frequency (Microwave)

- Super high frequency motion sensor (also known as microwave sensor) which detects movement when installed behind low density fixture materials, such as polycarbonate, acrylic and glass diffusers
- Turns light ON/OFF based on motion detection
- Universal Voltage (120V-277V)

MSHPCD - Motion Sensor High Frequency (Microwave) with Photocell Dimming Option

- Super high frequency motion sensor (also known as microwave sensor) which detects movement when installed behind low density fixture materials, such as polycarbonate, acrylic and glass diffusers
- Holds lights OFF when sufficient daylight is present regardless of motion detection
- Variably dims output to desired preset level and stand-by period when unoccupied (full on with motion)
- Selectable sensitivity and detection area
- Universal Voltage (120V-277V)
- Photocell dimming is disabled by default



CONTROLS AND SENSORS

WLC(LED RU) - EnOcean® LED Relay Zone Controller

- Supports a single LED fixture or multiple daisy chained LED fixtures
- Module installed inside lighting fixture

ESRPU-W-EO - EnOcean® Rocker Switch – Single – Surface Mount

- Wireless single rocker switch with mounting plate
- No batteries needed

EDRPU-W-EO - EnOcean® Rocker Switch – Double – Surface Mount

- Wireless double rocker switch with mounting plate
- No batteries needed

S3054-N300 - EnOcean® Navigan NWC 300U – Commissioning Tool

- Navigan Wireless Commissioner is used to configure EnOcean controllers & sensors
- It can be used to define link tables, change parameters/settings, and to edit & store projects
- Configuration settings can be saved and cloned to enable quick configuration
- Connectivity is through the NWC 300U USB Stick

EOSWU-W-EO - EnOcean® Occupancy Sensor – Wall Mount

- Wireless wall mounted occupancy sensor
- Solar powered - no batteries needed (coin battery operated in low light conditions)
- PIR motion sensor with both wide angle (50') and long range (100') options
- Mounting height: 6-8 feet

EOSCU-W-EO - EnOcean® Occupancy Sensor – Ceiling Mount

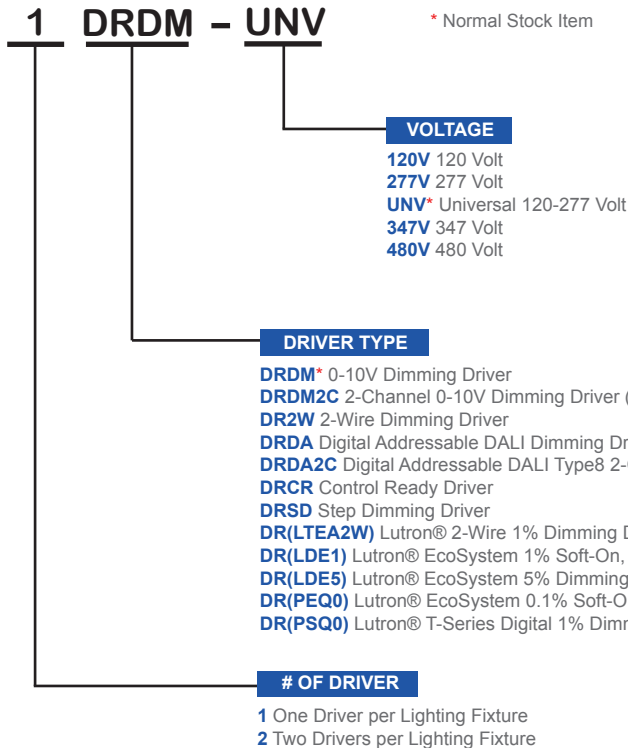
- Wireless ceiling mounted occupancy sensor
- Solar powered - no batteries needed (coin battery operated in low light conditions)
- PIR motion sensor with 360 degree viewing angle lens (34' diameter)
- Mounting height: 7-10 feet

ELLSU-W-EO - EnOcean® Light Level Sensor – Ceiling Mount

- Light Level sensor that measures and reports the level of available natural light
- Solar powered - no batteries needed (coin battery operated in low light conditions)
- Enables implementation of daylight harvesting control systems
- Mounting position: At the ceiling, close to ambient light source

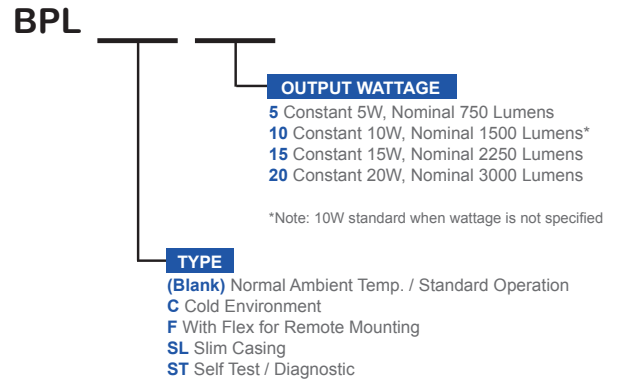
DRIVER OPTIONS

PLEASE CONSULT FACTORY TO SEE IF YOUR SELECTED DRIVER OPTION WORKS WITH THIS FIXTURE.



BATTERY PACK OPTIONS

PLEASE CONSULT FACTORY TO SEE IF YOUR SELECTED BATTERY PACK OPTION WORKS WITH THIS FIXTURE.



Los Angeles Lighting Mfg. Co.
 Headquarters
 10141 Olney Street
 El Monte, CA 91731
 Made in the USA

Contact Us
 T: 626-454-8300
 F: 626-454-8399
 www.lalighting.com



Due to continued product improvements and enhancements, Los Angeles Lighting Manufacturing Company reserves the right to alter specifications, dimensions, data, and/or materials without notice. Please visit our website to view the most current information.

MADE IN THE U.S.A.

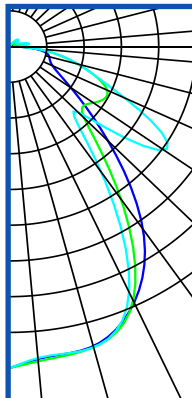
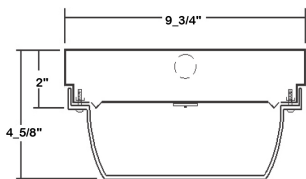
Revised 01-09-19

WARNING

PHOTOMETRIC DATA - WSE500 SERIES

WSE500-3-2L-1DRDM-UNV-1/840

TEST NO.=LA-T3189
 LED TYPE=48 LED MODULE
 NO. OF MODULE=1
 SYSTEM WATT (W)=26.0
 CRI ≥ 80
 L70(Hrs.) ≥ 50,000
 PHOTOMETRY TYPE=C



CANDLEPOWER

ANGLE	END	45	CROSS
0	1199	1199	1199
5	1170	1178	1166
15	1157	1161	1161
25	1053	1045	1011
35	831	694	571
45	498	378	346
55	268	366	674
65	169	385	453
75	147	252	254
85	89	98	99
90	21	33	32
95	15	49	61
115	20	27	27
125	14	29	37
135	7	13	35
145	2	1	7
155	0	0	0
165	0	0	0
175	0	0	0
180	0	0	0

ZONAL LUMEN SUMMARY

DEGREES	LUMENS	% LAMP	% FIXTURE
0-30	922	30.1	32.2
0-40	1360	44.4	47.5
0-60	2046	66.8	71.5
0-90	2719	88.8	95.0
90-120	100.4	3.2	3.5
90-150	140.8	4.6	4.9
90-180	140.8	4.6	4.9
0-180	2860	93.4	100.00

Luminaire Output = 2860 lumens
 Luminaire Efficacy = 110.0 lm/W

SPACING CRITERION

ALONG	ACROSS
0.94	1.45

