



# BAYLIGHTER™

## HBI609 UP-LIGHT SERIES

### Rugged Gymnasium Luminaire



- Rugged Gymnasium High Impact / Vandal Resistant Up-Light Luminaire
- Multi-Level Switching
- Heavy Gauge Cold Rolled Steel Welded Construction
- Powder Coated Finish / Painted After Fabrication
- Full Length Piano Hinge and Captive Screws
- Removable Wiring Access Plate
- Stem, Cable or Chain Mountable
- Available with:

Fluorescent, LED and LED T8 (Internally Driven)

11ga. Wire Guard

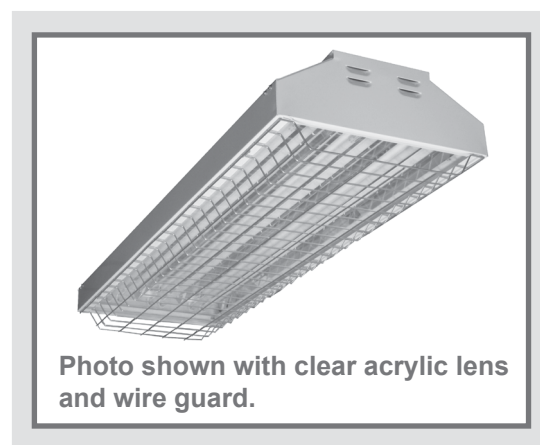
95% Enhanced Specular Aluminum Reflectors

Sensor

Emergency Battery Pack

Pendant Mtg. Hub / Adapter

Custom Colors



Photometric Data and IES Files are Available on [www.lalighting.com](http://www.lalighting.com)



**LOS ANGELES LIGHTING MFG. CO.**

10141 OLNEY ST. / EL MONTE, CA 91731

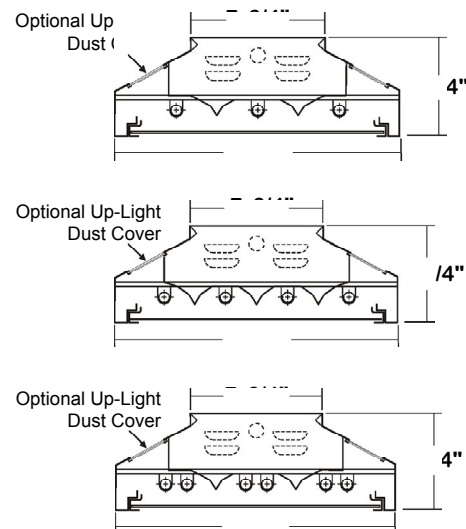
TEL : 626-454-8300 FAX : 626-454-8399

[www.lalighting.com](http://www.lalighting.com)



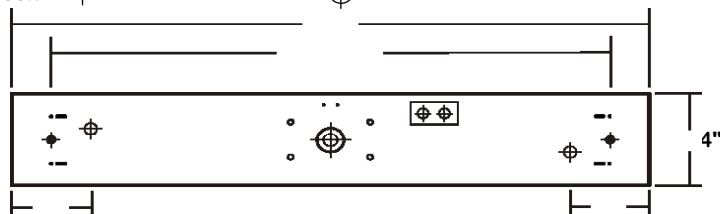
# HBI609 UP-LIGHT

## CROSS SECTION



## BACK PLATE

- 3/16" K.O.    ♦ 11/16" STEM MTG. K.O.    ⊕ ⊕ ACCESS PLATE
- V-HOOK    ⊕ 7/8" OFFSET K.O.    ⊕ 2" K.O.

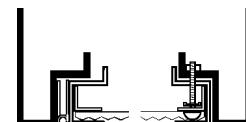


## CATALOG NUMBER

	NOMINAL LENGTH	TOTAL LAMPS		NOMINAL LENGTH	TOTAL LAMPS
HBI609-3-4M-UCA	4'	3	HBI609-3-4R-UCA	4'	3
HBI609-4-4M-UCA	4'	4	HBI609-4-4R-UCA	4'	4
HBI609-6-4M-UCA	4'	6	HBI609-6-4R-UCA	4'	6

## DOOR FRAME INFORMATION

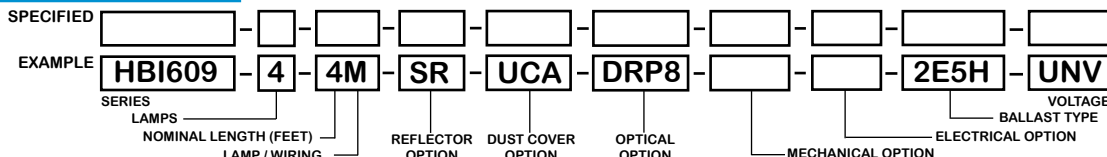
### ● CROSS SECTION



### ● EXPLANATION

1. Continuous Piano Hinge.
2. Two Captive Screws.
3. Inner Frame Lens Retainer Rail.

## ORDERING GUIDE



**NOTE: LAMP/WIRING\***  
 M= Miniature Bi-Pin T5  
 R= Medium Bi-Pin T8

## OPTIONS AND ACCESSORIES

### ● REFLECTOR OPTIONS

- Specular Aluminum Reflector (95%)
- White Aluminum Reflector (90%)

SUFFIX  
SR  
WR

### ● DUST COVER OPTIONS

- Up-Light w/ Clear Acrylic Cover
- Up-Light w/ Clear Prismatic Acrylic Cover

SUFFIX  
UCA  
UPA

### ● OPTICAL OPTIONS

- Clear Polycarbonate .125
- Clear Prismatic Polycarbonate .125
- High Impact Clear Prismatic Acrylic .125
- High Impact Clear Prismatic Acrylic .187
- \* Other Lens Available Upon Request

SUFFIX  
CPC2  
PPC2  
DRP2  
DRP8

### ● MECHANICAL OPTIONS

- Gasketing
- Tamper Proof Screws (Hex Socket With Post)

SUFFIX  
**GSK\***  
TP

### ● ELECTRICAL OPTIONS

- Emergency Battery Pack
- External Line Fusing (HLR/GLR)
- Radio Interference Filters
- Motion Sensor

SUFFIX  
BP\*  
ELF  
RIF  
MS

### ● BALLAST OPTIONS

- Electronic Ballasts T8
- Electronic T8 Step Dimming
- Electronic Ballast T5
- Electronic Ballast T5HO
- Electronic T5HO Step Dimming

SUFFIX  
E8\*  
E8SD  
E5  
E5H  
E5HSD

### ● ACCESSORIES

- Wire Guard - 11 Ga.
- Fixture Suspension System
- Ceiling Spacer
- 6" Leg Height V-Hook
- Die Cast Hub For 3/4" Pipe

CAT.NO.  
WG11-HBI609  
\*  
\*  
V6  
HUB

\*See appropriate reference page

## SPECIFICATIONS

### ● TYPE

Medium or high bay gymnasium area luminaire for surface, pendant, or chain mounting. Must be spaced a minimum of 1 1/2" from ceiling when surface mounted. Design for use in high impact / vandal resistant applications.

### ● CONSTRUCTION

22 ga. cold rolled steel welded housing. Quarter turn rotary locking lampholders standard. (20 ga. housing available as specified) Baked white powder coated finish, minimum reflectance 90%. Painted after fabrication.

### ● FINISH

Enhanced aluminum reflectors, 95% reflectance. High reflectance white aluminum reflector available.

### ● REFLECTOR

20 gauge cold rolled steel door frame, continuous piano hinge and 2 captive screws. Inner frame lens retainer rail.

### ● DOOR FRAME

Up-light with clear acrylic cover standard.

### ● UP\_LIGHT / DUST COVER

Available with various high impact acrylic or polycarbonate lenses.

### ● OPTICS

Chrome epoxy powder coated.

### ● WIRE GUARDS

120v 60Hz., 277v 60Hz., UNV (universal voltage 120v thru 277v.) or as otherwise specified.

### ● WIRING

Multiple levels of switching available as specified. U.L. Listed. Suitable for damp locations.

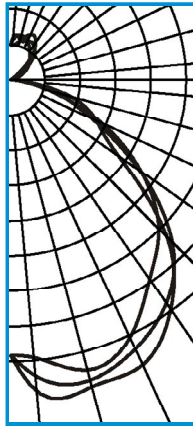
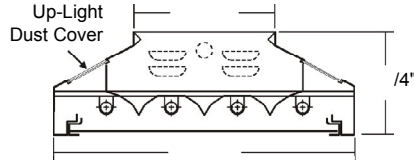
### ● LABELS



**PHOTOMETRIC DATA**

**HBI609-4-4M-SR-UCA-CPC2-E5H**

TEST NO.=LA-T2300  
 LAMP TYPE=F54T5HO  
 NO. OF LAMP=4  
 LUMENS PER LAMP=5000  
 WATTS PER LAMP=54  
 BALLAST FACTOR=1  
 PHOTOMETRY TYPE=C



**CANDLEPOWER**

ANGLE	END	45	CROSS
0	4252	4252	4252
5	4311	4600	4834
15	4642	4797	4898
25	4377	1576	4851
35	3746	4199	4312
45	3234	3522	3399
55	2451	2421	2018
65	1533	1365	1456
75	622	740	943
85	102	164	155
90	2	9	13
95	5	8	11
105	80	11	5
115	194	84	17
125	326	265	73
135	423	517	391
145	520	640	681
155	641	662	771
165	703	627	630
175	644	685	542
180	529	529	529

**ZONAL LUMEN SUMMARY**

DEGREES	LUMENS	% LAMP	% FIXTURE
0-30	3919	19.6	25.7
0-40	6503	32.5	42.7
0-60	11240	56.2	73.8
0-90	13586	67.9	89.2
90-120	131	0.7	0.9
90-150	1087	5.4	7.1
90-180	1647	8.2	10.8
0-180	15233	76.2	100.0

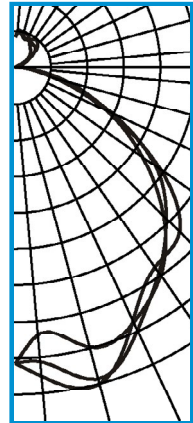
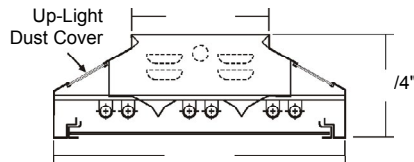
Lumen Output = 15233 lumens  
 Luminaire Efficiency = 76.2%

**SPACING CRITERION**

ALONG	ACROSS
1.36	1.49

**HBI609-6-4M-SR-UCA-CPC2-E5H**

TEST NO.=LA-T2301  
 LAMP TYPE=F54T5HO  
 NO. OF LAMP=6  
 LUMENS PER LAMP=5000  
 WATTS PER LAMP=54  
 BALLAST FACTOR=1  
 PHOTOMETRY TYPE=C



**CANDLEPOWER**

ANGLE	END	45	CROSS
0	6364	6364	6364
5	5757	6352	6676
15	6238	6933	7040
25	6028	3213	5982
35	5447	5376	5234
45	4490	4576	4987
55	3311	3658	3779
65	2129	2260	2220
75	877	983	1134
85	150	188	175
90	1	5	9
95	15	2	2
105	97	33	1
115	235	208	63
125	345	455	435
135	276	603	683
145	544	628	731
155	702	643	659
165	780	693	664
175	760	796	751
180	656	656	656

**ZONAL LUMEN SUMMARY**

DEGREES	LUMENS	% LAMP	% FIXTURE
0-30	5352	17.8	25.5
0-40	8718	29.1	41.5
0-60	15556	51.9	74.1
0-90	18953	63.2	90.3
90-120	226	0.8	1.1
90-150	1460	4.9	7.0
90-180	2041	6.8	9.7
0-180	20993	70.0	100.0

Lumen Output = 20993 lumens  
 Luminaire Efficiency = 70.0%

**SPACING CRITERION**

ALONG	ACROSS
1.32	1.29

