



SECURITY

MSE120 SERIES



2X2, Metal Sided Security Luminaire



- 2X2, Metal Sided Security Luminaire
- Welded and Painted After Fabrication
- Full Length Piano Hinge and Captive Tamper Proof Screws
- Nominal .187 High Impact Clear Prismatic Acrylic Lens
- One Way Polyurethane Gasketed
- Suitable for Damp Locations
- Available with:
 - Fluorescent, LED and LED T8 (Internally Driven)
 - Variety of Lens
 - Emergency Battery Pack



Photometric Data and IES Files are Available on www.lalighting.com



LOS ANGELES LIGHTING MFG. CO.

10141 OLNEY ST. / EL MONTE, CA 91731

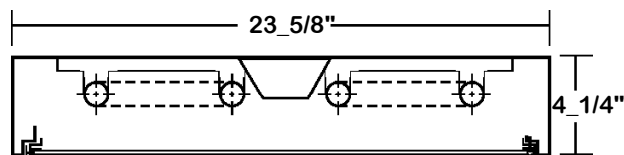
TEL : 626-454-8300 FAX : 626-454-8399

www.lalighting.com



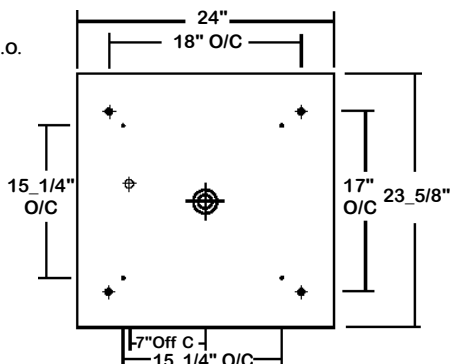
MSE120 SERIES 2x2

CROSS SECTION



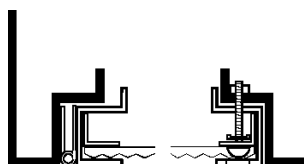
BACK PLATE

- 3/8" K.O.
- ◆ 11/16" STEM MTG. K.O.
- ⊕ 7/8" OFFSET K.O.
- ⊕ 2" K.O.



DOOR FRAME INFORMATION

● CROSS SECTION



● EXPLANATION

1. Continuous Piano Hinge.
2. Two Captive Tamper Proof Screws (Hex Socket With Post).
3. Inner Frame Lens Retainer Rail.

FS W

FINISHES

- W - White Enamel
- B - Black Enamel

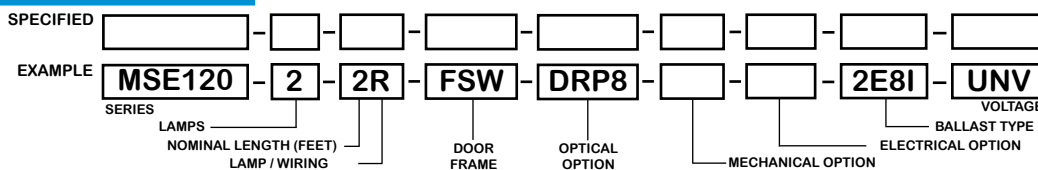
STYLES

- FS - Flat Steel

CATALOG NUMBER

	NOMINAL WIDTH X LENGTH	TOTAL LAMPS		NOMINAL WIDTH X LENGTH	TOTAL LAMPS		NOMINAL WIDTH X LENGTH	TOTAL LAMPS
MSE120-2-2M	2' X 2'	2	MSE120-2-2R	2' X 2'	2	MSE120-2-2RU1	2' X 2'	2
MSE120-3-2M	2' X 2'	3	MSE120-3-2R	2' X 2'	3	MSE120-3-2RU1	2' X 2'	3
MSE120-4-2M	2' X 2'	4	MSE120-4-2R	2' X 2'	4	MSE120-2-2RU6	2' X 2'	2

ORDERING GUIDE



NOTE: LAMP/WIRING*
 M = Miniature Bi-Pin T5
 R = Medium Bi-Pin T8
 RU1 = Medium Bi-Pin T8 U Shaped 1_5/8" Spacing
 RU6 = Medium Bi-Pin T8 U Shaped 6" Spacing

OPTIONS AND ACCESSORIES

● OPTICAL OPTIONS

- High Impact Clear Prismatic Acrylic .187
- High Impact Clear Prismatic Acrylic .125
- Clear Prismatic Polycarbonate .125

* Other Lens Available Upon Request

● MECHANICAL OPTIONS

- Gasketing

SUFFIX

- DRP8
- DRP2
- PPC2

SUFFIX

- GSK*

● ELECTRICAL OPTIONS

- Emergency Battery Pack
- External Line Fusing (HLR/GLR)
- Radio Interference Filters
- Night Light

SUFFIX

- BP*
- ELF
- RIF
- NL*

● BALLAST OPTIONS

- Electronic T5
- Electronic T5HO
- Electronic Step Dimming T5HO
- Electronic T8
- Electronic Step Dimming T8

SUFFIX

- E5*
- E5H
- ESDM5H
- E8*
- ESDM8*

● ACCESSORIES

- Fixture Suspension System

CAT. NO.

*

*See appropriate reference page

SPECIFICATIONS

- TYPE
- CONSTRUCTION
- FINISH
- DOOR FRAME

Surface mounted, metal sided 24" wide fixture. Design for use in public areas where vandalism is a problem.
 Die formed 20 gauge. C.R.S. Spot welded seams and corners.
 Baked white powder coated finish, minimum reflectance 90%, painted after fabrication.
 20 gauge cold rolled steel continuous piano hinge and 2 captive tamper proof screws (hex socket with post).
 Inner frame lens retainer rail.

- GASKET
- OPTICS
- WIRING
- LABELS

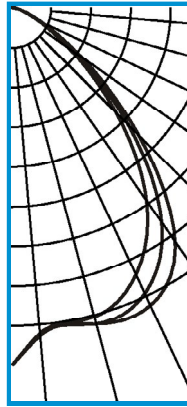
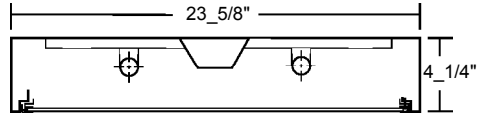
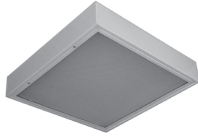
One way polyurethane gasketed standard. More options available.
 .187 high impact clear prismatic acrylic standard.
 120v 60Hz., 277v 60Hz., UNV (universal voltage 120v thru 277v.) or as otherwise specified.
 U.L. Listed. Suitable for damp locations.



PHOTOMETRIC DATA

MSE120-2-2R-FSW-DRP8-E8

TEST NO.=LA-T0381-1
 LAMP TYPE=FO17T8
 NO. OF LAMP=2
 LUMENS PER LAMP=1350
 WATTS PER LAMP=17
 BALLAST FACTOR=1
 PHOTOMETRY TYPE=C



CANDLEPOWER

ANGLE	END	45	CROSS
0	880	880	880
5	808	806	802
15	765	804	805
25	721	773	806
35	574	639	696
45	356	398	434
55	166	182	201
65	64	67	72
75	18	18	20
85	2	3	3
90	0	0	0
95	0	0	0
105	0	0	0
115	0	0	0
125	0	0	0
135	0	0	0
145	0	0	0
155	0	0	0
165	0	0	0
175	0	0	0
180	0	0	0

ZONAL LUMEN SUMMARY

DEGREES	LUMENS	% LAMP	% FIXTURE
0-30	660	24.4	40.7
0-40	1060	39.2	65.4
0-60	1531	56.7	94.5
0-90	1620	60.0	100.0
90-120	0	0.0	0
90-150	0	0.0	0
90-180	0	0.0	0
0-180	1620	60.0	100.0

Lumen Output = 1620 lumens
 Luminaire Efficiency = 60.0%

SPACING CRITERION

ALONG	ACROSS
1.11	1.25

This space is intentionally left blank.

This space is intentionally left blank.

This space is intentionally left blank.

