



WRAPAROUND LED

WHO100 (4FT) SERIES (8' AVAILABLE)

HIGH IMPACT WRAPAROUND LUMINAIRE

| | |
|------|--|
| DATE | |
| JOB | |

WWW.LALIGHTING.COM
626-454-8300

APPLICATIONS

COMMERCIAL, CLASSROOM



SPECIFICATIONS

FEATURES

- Surface / pendant mounted LED luminaire
- 0-10V dimming driver standard (other dimming types available)
- Controls and sensors available
- Wireless control options (Lutron, EnOcean, ZigBee, etc.)
- Supports California Title 24 compliance
- Suitable for damp locations
- Additional lumen packages and color temperatures available
- Full customization available upon request

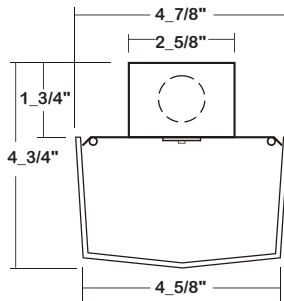
CONSTRUCTION

- 22 ga. cold rolled steel welded housing
- Canopy suspension system available

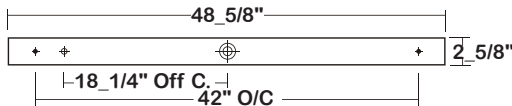
OPTICAL

- High impact clear prismatic acrylic lens (minimum 0.125 thickness)
- Lens secured by spring loaded barrel latches

DIMENSIONS



✦ 11/16" STEM MTG. K.O. ✦ 7/8" OFFSET K.O. ✦ 2" K.O.



ELECTRICAL

- High efficiency drivers coupled with long-life LEDs
- Service life greater than 50,000 hours (L70)
- Universal voltage 120V through 277V (347V / 480V available)
- Emergency battery pack available

FINISH

- Baked white powder coated finish
- Painted after fabrication
- Minimum reflectance 90%

ORDERING INFORMATION

EXAMPLE: WHO100-2-4L-DRP3-BPL1.5-DRDM-UNV-1/840

| SERIES | LED LUMEN PACKAGE | NOMINAL LENGTH | OPTICAL | ELECTRICAL | DRIVER | VOLTAGE | # OF LED ROW | CRI / CCT |
|---|---|-----------------|---|---|---|---|-------------------------|---|
| WHO100 | | 4L | | | | UNV | 1 | |
| WHO100 High Impact Wraparound LED Luminaire | 2 Nom. 2000 Lumens 6 Nom. 6000 Lumens <i>*Additional Lumen Packages Available</i> | 4L 4' | DRP3 High Impact Clear Prismatic Acrylic Min. 0.125 Thickness | BPL1.5 Emergency Battery Pack SDxx Step Dimming Control *Leave Blank if Not Specified <i>Additional Electrical Options</i> | DRDM 0-10V Dimming Driver <i>Additional Driver Options</i> | UNV 120V-277V *Additional Voltages Available | 1 One LED Row | 835 80+CRI / 3500K Color Temp. 840 80+CRI / 4000K Color Temp. 850 80+CRI / 5000K Color Temp. *Additional Color Temp. Available |



Los Angeles Lighting Mfg. Co.
Contact Us
T: 626-454-8300 10141 Olney Street
F: 626-454-8399 El Monte, CA 91731
www.lalighting.com Made in the USA



Due to continued product improvements and enhancements, Los Angeles Lighting Manufacturing Company reserves the right to alter specifications, dimensions, data, and/or materials without notice. Please visit our website to view the most current information.

© 2022 LOS ANGELES LIGHTING MANUFACTURING CO. ALL RIGHTS RESERVED.

Revised: 08/15/17



SYSTEM DATA

| NOMINAL SIZE | LED LUMEN PACKAGE | OPTICAL OPTION | CRI / CCT | DELIVERED LUMENS | SYSTEM WATTS | LUMINAIRE EFFICACY | FLUORESCENT EQUIVALENT | IES FILES |
|--------------|-------------------|----------------|-----------|------------------|--------------|--------------------|------------------------|--------------------------|
| 4' | 2000 lm | DRP3 | 840 | 1931 lm | 17.8 W | 108.5 lm/W | 1-F32T8 | LA-T2618 |
| | 6000 lm | DRP3 | | 5355 lm | 45.2 W | 118.5 lm/W | 3-F32T8 | LA-T2894 |

NOTE:

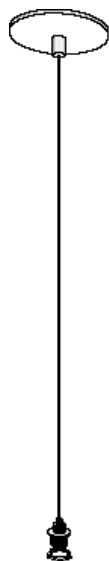
System data above is based on 120V input voltage.

Actual performance may differ as a result of end-user environment and application.

This fixture has been tested and listed in accordance with UL Standards. L.A. Lighting certifies that it will operate safely when installed properly, and within an ambient temperature range from -20°C to 40°C.

Additional lumen packages and color temperatures available.

ACCESSORIES



433B

- Blank canopy with cable
- No power cord
- Cable length 48" and 96"
- Max. weight 196 lbs. per set

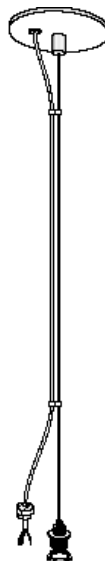
433B - 48 W

COLOR

- W** White Standard
- B** Black

CABLE LENGTH

48" and 96" Standard
(other lengths as specified)



444F

- Feed-in canopy with straight cord
- Includes power cord
- Cable length 48" and 96"
- Max. weight 196 lbs. per set

444F-48SW-2C

OF CIRCUIT

- 2C** Two Circuits
- LV** 0-10V Dimming
- Leave blank for one circuit

COLOR

- W** White Standard
- B** Black

CORD TYPE

- S** Straight Cord

CABLE LENGTH

48" and 96" Standard
(other lengths as specified)



Los Angeles Lighting Mfg. Co.
 Contact Us
 T: 626-454-8300 10141 Olney Street
 F: 626-454-8399 El Monte, CA 91731
 www.lalighting.com Made in the USA



Due to continued product improvements and enhancements, Los Angeles Lighting Manufacturing Company reserves the right to alter specifications, dimensions, data, and/or materials without notice. Please visit our website to view the most current information.

© 2022 LOS ANGELES LIGHTING MANUFACTURING CO. ALL RIGHTS RESERVED.

Revised: 08/15/17

