



RETROFIT SOLUTION LED

RWHO 100 SERIES

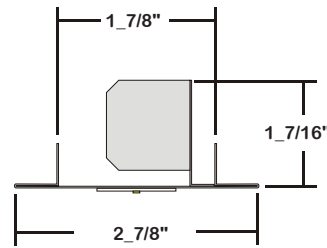
WRAPAROUND RETROFIT SOLUTION

DATE	
JOB	

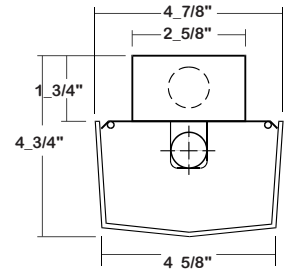
WWW.LALIGHTING.COM
626-454-8300

**EASILY CONVERTS EXISTING SURFACE / PENDANT MOUNTED
4' AND 8' WRAPAROUND FLUORESCENT FIXTURES TO LED LUMINAIRES**

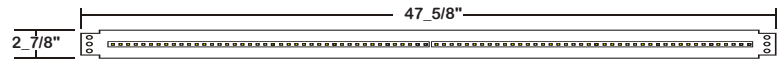
DIMENSIONS



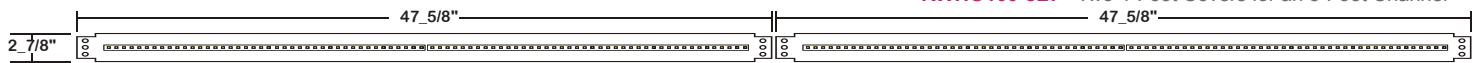
Typical Host Fixture Dimension



RWHO100-4L - One 4-Foot Cover for a 4-Foot Channel



RWHO100-8LT - Two 4-Foot Covers for an 8-Foot Channel



**Dimensions must be checked against host fixture to ensure the retrofit solution will fit properly. L.A. Lighting has the capability to modify the retrofit solution to fit your fixture.*

FEATURES

- LED retrofit solution for wraparound fluorescent luminaires
- 0-10V dimming driver standard
- Includes easy-to-read installation instructions
- Safety cables pre-installed
- Supports California Title 24 compliance

OPTIONS

- Full customization available upon request
- Additional lumen packages and color temperatures available
- Controls and sensors available
- Wireless control options available
- Emergency battery pack available
- Tunable white available (2700K-6500K)
- Painted after fabrication available

SPECIFICATIONS

CONSTRUCTION

- 22 ga. cold rolled steel LED cover tray
- LED cover tray to be secured to the host fixture with provided screws

FINISH

- Baked white polyester finish / minimum reflectance 86%

ELECTRICAL

- High efficiency drivers coupled with long-life LEDs
- Service life greater than 50,000 hours (L70)
- Universal voltage 120V through 277V (347V / 480V available)
- LED light engine is pre-wired with a quick connector for easy connection
- Driver-disconnect is provided for disconnecting the electrical supply conductors to the LED driver
- Power Factor (PF) ≥ 0.9
- Total Harmonic Distortion (THD) $\leq 20\%$

LISTING

- UL USA and Canada classified

WARRANTY

- 5-Year limited warranty standard. 10-Year limited warranty also available.



Los Angeles Lighting Mfg. Co.
Contact Us
T: 626-454-8300 10141 Olney Street
F: 626-454-8399 El Monte, CA 91731
www.lalighting.com Made in the USA



Due to continued product improvements and enhancements, Los Angeles Lighting Manufacturing Company reserves the right to alter specifications, dimensions, data, and/or materials without notice. Please visit our website to view the most current information.

© 2022 LOS ANGELES LIGHTING MANUFACTURING CO. ALL RIGHTS RESERVED.

Revised: 07/27/23



ORDERING INFORMATION EXAMPLE: RWHO100-2-4L-DRDM-UNV-1/840

RETROFIT SERIES	LED LUMEN PACKAGE	EFFICACY	NOMINAL LENGTH	MECHANICAL	ELECTRICAL	DRIVER	VOLTAGE	# OF LED ROW	CRI / CCT
RWHO100						DRDM	UNV	1	
RWHO100 Wraparound Fluorescent Fixture to LED Luminaire Retrofit Solution	2 Nom. 2000 Lumens 4 Nom. 4000 Lumens *Additional Lumen Packages Available	(Blank) Standard HE High Efficacy	4L 4' (one 4-foot cover for a 4-foot channel) (Only 2000 lumens Systems) 8LT 8' (two 4-foot covers for an 8-foot channel) (Only 4000 lumens Systems)	PAF Painted After Fabrication *Leave Blank if Not Specified	BPL1.5 1500lm Emergency Battery Pack WLC(LED RU) EnOcean Wireless Control *Leave Blank if Not Specified <u>Additional Electrical Options</u>	DRDM 0-10V Dimming Driver	UNV 120V-277V	1 One LED Row	830 80+CRI / 3000K Color Temp. 835 80+CRI / 3500K Color Temp. 840 80+CRI / 4000K Color Temp. 850 80+CRI / 5000K Color Temp. *Additional Color Temp. Available
Standard options for RWHO100 shown above. For additional options, including lumen packages, controls, lenses, switches, finishes, and more, visit www.lalighting.com/resources or contact customer service.									

SYSTEM DATA

THESE ARE THE MOST POPULAR LUMEN PACKAGES. PLEASE CONSULT FACTORY FOR ADDITIONAL SYSTEM DATA.

LED LUMEN PACKAGE	NORMAL AMBIENT TEMPERATURE PRODUCT CODE	DELIVERED LUMENS**	SYSTEM WATTS	LUMINAIRE EFFICACY	AMBIENT TEMP.	FLUORESCENT EQUIVALENT	IES FILES
2000 Lumens (Nominal)	RWHO100-2-4L-DRDM-UNV-1/840	2021 lm	14.2 W	142.1 lm/W	-20°C / 35°C	1-F32T8	LA-T3423
4000 Lumens (Nominal)	RWHO100-4-8LT-DRDM-UNV-1/840	3719 lm	25.9 W	143.4 lm/W	-20°C / 35°C	2-F32T8	*

LED LUMEN PACKAGE	NORMAL AMBIENT TEMPERATURE (HIGH EFFICACY) PRODUCT CODE	DELIVERED LUMENS**	SYSTEM WATTS	LUMINAIRE EFFICACY	AMBIENT TEMP.	FLUORESCENT EQUIVALENT	IES FILES
2000 Lumens (Nominal)	RWHO100-2HE-4L-DRDM-UNV-1/840	2028 lm	11.9 W	171.0 lm/W	-20°C / 35°C	1-F32T8	*
4000 Lumens (Nominal)	RWHO100-4HE-8LT-DRDM-UNV-1/840	3648 lm	21.3 W	171.5 lm/W	-20°C / 35°C	2-F32T8	*

NOTE:
System data is based on 120V input voltage. Actual performance may differ as a result of end-user environment and application.

** As tested in a host fixture with a clear prismatic acrylic lens

This fixture has been tested and listed in accordance with UL Standards. L.A. Lighting certifies that it will operate safely when installed properly, and within an ambient temperature range noted in the system data table.

Additional lumen packages and color temperatures available.



Los Angeles Lighting Mfg. Co.
Contact Us
T: 626-454-8300 10141 Olney Street
F: 626-454-8399 El Monte, CA 91731
www.lalighting.com Made in the USA



Due to continued product improvements and enhancements, Los Angeles Lighting Manufacturing Company reserves the right to alter specifications, dimensions, data, and/or materials without notice. Please visit our website to view the most current information.

© 2022 LOS ANGELES LIGHTING MANUFACTURING CO. ALL RIGHTS RESERVED.

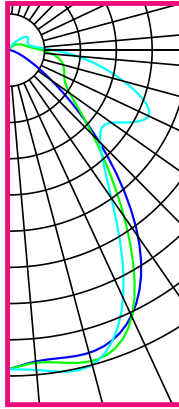
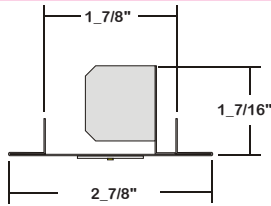
Revised: 07/27/23



PHOTOMETRIC DATA - RWHO100 SERIES

RWHO100-2-4L-DRDM-UNV-1/840

TEST NO.=LA-T3423
 HOST FIXTURE=WHO100 with Clear Prismatic Acrylic Lens
 LED TYPE=48 LED MODULE
 NO. OF MODULE=2
 SYSTEM WATT (W)=14.2
 CRI ≥ 80
 L70(Hrs.) ≥ 50,000
 PHOTOMETRY TYPE=C



CANDLEPOWER

ANGLE	END	45	CROSS
0	806	806	806
5	789	792	811
15	791	813	823
25	740	743	690
35	575	512	456
45	323	303	330
55	134	190	320
65	48	156	394
75	17	144	303
85	6	112	175
90	3	84	114
95	3	63	77
115	2	44	53
125	2	34	54
135	1	25	58
145	1	14	38
155	0	7	17
165	0	3	7
175	0	1	2
180	0	0	0

ZONAL LUMEN SUMMARY

DEGREES	LUMENS	% LAMP	% FIXTURE
0-30	643	29	32
0-40	966	43	48
0-60	1397	62	69
0-90	1846	82	91
90-120	130	6	6
90-150	172	8	9
90-180	174	8	9
0-180	2020	90	100

Luminaire Output = 2020.3 lumens
 Luminaire Efficacy = 142.3 lm/W
 Luminaire Efficiency = 90.1%

SPACING CRITERION

ALONG	ACROSS
1.20	1.10

