



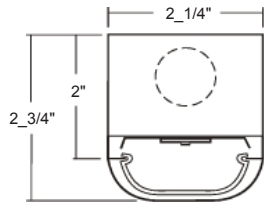
IN-STOCK PRODUCT SCHEDULE

FOR IMMEDIATE SHIPMENT OR PICK-UP!



WWW.LALIGHTING.COM - (626) 454-8300

AS OF 06/06/2019



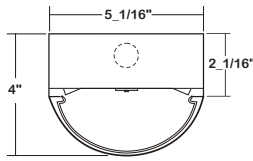
VIEW DETAILS

LED Strip with Diffuser (One Per Carton) 4000°K

Fluorescent Equivalent

| | |
|------------------------------------------------------------|------------------------|
| STW100-2-2L-FRWA-DRDM-UNV-1/840 | (2) F17T8, (1) F24T5HO |
| STW100-2-4L-FRWA-DRDM-UNV-1/840 | (1) F32T8 |
| STW100-4-4L-FRWA-DRDM-UNV-1/840 | (2) F32T8, (1) F54T5HO |
| STW100-4-8L-FRWA-DRDM-UNV-1/840 | (2) F32T8 |
| STW100-8-8L-FRWA-DRDM-UNV-1/840 | (4) F32T8, (2) F54T5HO |
| Additional Color Temperatures and Lumen Packages Available | |
| 5-7 Working Days Lead Time | |

| | |
|----------|---------------------------------------------------------------------------------|
| BPLSL1.5 | SLIM BATTERY PACK, NOMINAL 1500 LM (4L & 8L ONLY) (7-10 Working Days Lead Time) |
|----------|---------------------------------------------------------------------------------|



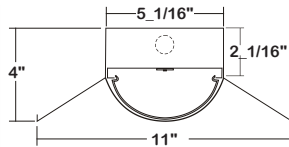
VIEW DETAILS

LED Strip Wraparound w/ Diffuser (One Per Carton) 4000°K

Fluorescent Equivalent

| | |
|------------------------------------------------------------|------------------------|
| STW200-4-4L-DRDM-UNV-1/840 | (2) F32T8, (1) F54T5HO |
| STW200-8-8L-DRDM-UNV-1/840 | (4) F32T8, (2) F54T5HO |
| Additional Color Temperatures and Lumen Packages Available | |
| 5-7 Working Days Lead Time | |

| | |
|----------------------------------------------|----------------------------------|
| MS | MOTION SENSOR - ON/OFF |
| MSPC | MOTION SENSOR PHOTOCELL - ON/OFF |
| BPL1.5 | BATTERY PACK, NOMINAL 1500 LM |
| CONTACT THE FACTORY FOR OTHER SENSOR OPTIONS | |



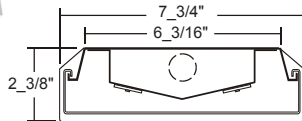
VIEW DETAILS

LED Industrial (One Per Carton) 4000°K

Fluorescent Equivalent

| | |
|------------------------------------------------------------|------------------------|
| INW200-4-4L-DRDM-UNV-1/840 | (2) F32T8, (1) F54T5HO |
| INW200-8-8L-DRDM-UNV-1/840 | (4) F32T8, (2) F54T5HO |
| Additional Color Temperatures and Lumen Packages Available | |
| 5-7 Working Days Lead Time | |

| | |
|----------------------------------------------|----------------------------------------------------------------|
| MS | MOTION SENSOR - ON/OFF (5-10 Working Days Lead Time) |
| MSPC | MOTION SENSOR PHOTOCELL - ON/OFF (5-10 Working Days Lead Time) |
| BPL1.5 | BATTERY PACK, NOMINAL 1500 LM (7-10 Working Days Lead Time) |
| CONTACT THE FACTORY FOR OTHER SENSOR OPTIONS | |



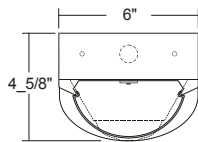
VIEW DETAILS

LED Wraparound (One Per Carton) 4000°K

Fluorescent Equivalent

| | |
|------------------------------------------------------------|------------------------|
| WAN107-4-4L-FPA-DRDM-UNV-2/840 | (2) F32T8, (1) F54T5HO |
| Additional Color Temperatures and Lumen Packages Available | |
| 5-7 Working Days Lead Time | |

| | |
|--------|-------------------------------------------------------------|
| BPL1.5 | BATTERY PACK, NOMINAL 1500 LM (7-10 Working Days Lead Time) |
|--------|-------------------------------------------------------------|



VIEW DETAILS

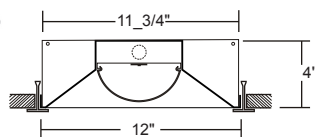
LED Radial Wrap (Variable Dimming) (One Per Carton) 4000°K

Suitable for: Parking Structure, Stairwell, Storage, Corridor, Canopy

Fluorescent Equivalent

| | |
|------------------------------------------------------------|------------------------|
| WSE251-4-4L-MSPCD(LOWE)-DRDM-UNV-1/840 | (2) F32T8, (1) F54T5HO |
| Additional Color Temperatures and Lumen Packages Available | |
| 5-7 Working Days Lead Time | |

| | |
|--------|-------------------------------------------------------------|
| BPL1.5 | BATTERY PACK, NOMINAL 1500 LM (7-10 Working Days Lead Time) |
|--------|-------------------------------------------------------------|



VIEW DETAILS

LED Direct Recessed T-Bar (1x4 / One Per Carton) 4000°K

Fluorescent Equivalent

| | |
|------------------------------------------------------------|------------------------|
| 3-GDC310-4K-4L-1DRDM-UNV-1/840 * | (2) F32T8, (1) F54T5HO |
| Additional Color Temperatures and Lumen Packages Available | |
| 5-7 Working Days Lead Time | |

| | |
|--------|-------------------------------------------------------------|
| BPL1.5 | BATTERY PACK, NOMINAL 1500 LM (7-10 Working Days Lead Time) |
|--------|-------------------------------------------------------------|



Los Angeles Lighting Mfg. Co.

Headquarters
10141 Olney Street
El Monte, CA 91731
Made in the USA

Contact Us
T: 626-454-8300
F: 626-454-8399
www.lalighting.com

DesignLights Consortium® (DLC) qualified product *
DesignLights Consortium® (DLC Premium) qualified product **



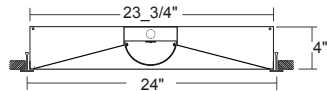
IN-STOCK PRODUCT SCHEDULE

FOR IMMEDIATE SHIPMENT OR PICK-UP!



WWW.LALIGHTING.COM - (626) 454-8300

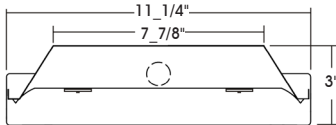
AS OF 06/06/2019



VIEW DETAILS

LED Direct Recessed T-Bar (2x2, 2x4 / One Per Carton) 4000°K Fluorescent Equivalent

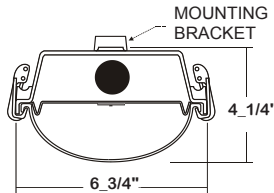
| | |
|---------------------------------------------------------------------------------------|-------------------------------------------------------------|
| 3-GDC320-3K-2L-1DRDM-UNV-1/840 * | (3) F17T8 |
| 3-GDC320-4K-4L-1DRDM-UNV-1/840 * | (2) F32T8, (1) F54T5HO |
| Additional Color Temperatures and Lumen Packages Available 5-7 Working Days Lead Time | |
| BPL1.5 | BATTERY PACK, NOMINAL 1500 LM (7-10 Working Days Lead Time) |



VIEW DETAILS

LED High Bay (One Per Carton) 5000°K Lumen Equivalent

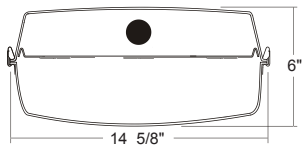
| | |
|---------------------------------------------------------------------------------------|----------------------------------------------------------------|
| 3-HBN100-12K-2L-PA-1DRDM-UNV-2/850HT ** | 250W (MH), (6) F24T5HO, (3) F54T5HO |
| HBN100-12-4L-PA-1DRDM-UNV-1/850HT ** | 250W (MH), (6) F32T8, (3) F54T5HO |
| HBN100-16-4L-PA-1DRDM-UNV-1/850HT ** | 400W (MH), (4) F54T5HO |
| HBN100-24-4L-1DRDM-UNV-2/850HT ** (No Lens) | 400W (MH), (6) F54T5HO |
| HBN100-24-4L-PA-1DRDM-UNV-2/850HT ** | 400W (MH), (6) F54T5HO |
| Additional Color Temperatures and Lumen Packages Available 5-7 Working Days Lead Time | |
| WG11-HBN100 | 11 GAUGE WIRE GUARD (NOT AVAILABLE WITH PA LENS) (Each) |
| YTCS10 | 10' Y-TOGGLE END CABLE W/ SELF-LOCKING DEVICE (Set of 2) |
| MS | MOTION SENSOR - ON/OFF (5-10 Working Days Lead Time) |
| MSPC | MOTION SENSOR PHOTOCELL - ON/OFF (5-10 Working Days Lead Time) |
| BPL1.5 | BATTERY PACK, NOMINAL 1500 LM (7-10 Working Days Lead Time) |
| CONTACT THE FACTORY FOR OTHER SENSOR OPTIONS | |



VIEW DETAILS

LED Vapor Tight Wet Location (One Per Carton) 4000°K Fluorescent Equivalent

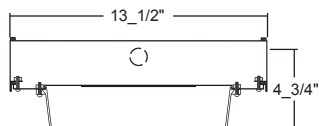
| | |
|---------------------------------------------------------------------------------------|-------------------------------------------------------------|
| CIT200-4-4L-DRFA-WL-DRDM-UNV-1/840 | (2) F32T8, (1) F54T5HO |
| CIT200-8-8L-DRFA-WL-DRDM-UNV-1/840 | (4) F32T8, (2) F54T5HO |
| Additional Color Temperatures and Lumen Packages Available 5-7 Working Days Lead Time | |
| CIT2/SSL4 | STAINLESS STEEL LATCHES FOR 4" CIT200 (Set) |
| CIT2/SSL8 | STAINLESS STEEL LATCHES FOR 8" CIT200 (Set) |
| CIT2/SSV | STAINLESS STEEL CHAIN MOUNT V-HOOK (Set of 2) |
| BPL1.5 | BATTERY PACK, NOMINAL 1500 LM (7-10 Working Days Lead Time) |



VIEW DETAILS

LED Vapor Tight Wet Location (One Per Carton) 5000°K Lumen Equivalent

| | |
|---------------------------------------------------------------------------------------|-------------------------------------------------------------|
| CIT400-16-4L-DRFA-WL-DRDM-UNV-2/850 | 400W (MH), (4) F54T5HO |
| CIT400-24-4L-DRFA-WL-1DRDM-UNV-2/850HT ** | 750W (MH), (6) F54T5HO |
| Additional Color Temperatures and Lumen Packages Available 5-7 Working Days Lead Time | |
| CIT4/VH | STAINLESS STEEL V-HOOK (Set of 2) |
| CIT4/CM | CEILING MOUNT HANGER (Set of 2) |
| CIT4/LT | LENS TETHER (FIELD INSTALLED) (Set of 2) |
| BPL1.5 | BATTERY PACK, NOMINAL 1500 LM (7-10 Working Days Lead Time) |



VIEW DETAILS

LED Canopy / Surface Security Wet Location (One Per Carton) 4000°K

| | |
|---------------------------------------------------------------------------------------|-------------------------------------------------------------|
| BCL100-1-1L-DRDM740-UNV-840 (3000 Lumen) | |
| BCL100-1-1L-1DRCDM1050-UNV-840 * (4000 Lumen) | |
| Additional Color Temperatures and Lumen Packages Available 5-7 Working Days Lead Time | |
| TP | TAMPER PROOF SCREWS (Set) |
| BPL1.5 | BATTERY PACK, NOMINAL 1500 LM (7-10 Working Days Lead Time) |



Los Angeles Lighting Mfg. Co.

Headquarters
10141 Olney Street
El Monte, CA 91731
Made in the USA

Contact Us
T: 626-454-8300
F: 626-454-8399
www.lalighting.com

DesignLights Consortium® (DLC) qualified product *
DesignLights Consortium® (DLC Premium) qualified product **