



SURFACE MOUNT

MFF 106 (2FT)

SERIES (4' AND 8' AVAILABLE)
6" WIDE FRAMELESS FLAT LUMINAIRE

LED

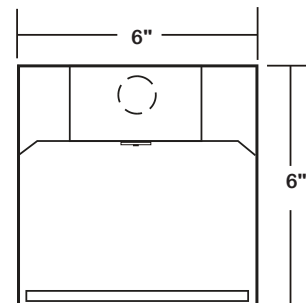
DATE

JOB

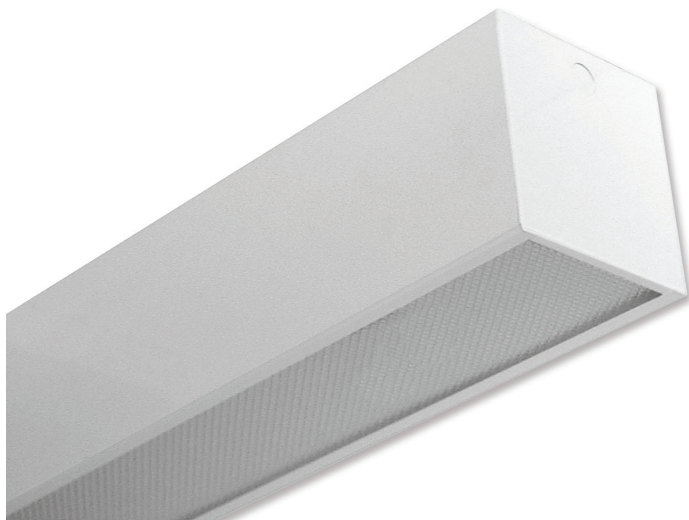
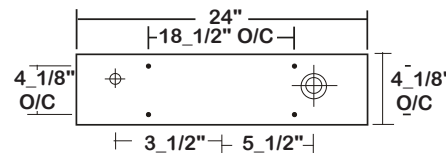
WWW.LALIGHTING.COM
626-454-8300

SURFACE / SUSPENSION MOUNTED LED LUMINAIRE

DIMENSIONS



- 3/8" K.O. ♦ 11/16" STEM MTG. K.O. ⊕ 7/8" OFFSET K.O. ⊕ 2" K.O.



APPLICATIONS

- Commercial, Office, Retail, Accent Lighting

FEATURES

- 0-10V dimming driver standard (See DRIVER OPTIONS for other dimming types)
- Supports California Title 24 compliance

OPTIONS

- Full customization available upon request
- Additional lumen packages and color temperatures available
- Wireless control options available (See SENSOR OPTIONS for wireless controls)
- Custom colors available (See CUSTOM COLORS for standard and custom options)
- Variety of lenses available (See OPTICAL OPTIONS for lenses)
- Emergency battery pack available (See BATTERY PACK OPTIONS for battery pack options)
- Tunable white available (2700K-6500K)

SPECIFICATIONS

CONSTRUCTION

- 20 ga. cold rolled steel welded housing
- Frameless lens

FINISH

- Baked white powder coated finish / painted after fabrication / minimum reflectance 90%

OPTICAL

- Clear prismatic acrylic lens

ELECTRICAL

- High efficiency drivers coupled with long-life LEDs
- Service life greater than 50,000 hours (L70)
- Universal voltage 120V through 277V (347V / 480V available)
- Power Factor (PF) ≥ 0.9
- Total Harmonic Distortion (THD) ≤ 20%

LISTING

- UL USA and Canada listed / suitable for damp locations

WARRANTY

- 5-year limited warranty



Los Angeles Lighting Mfg. Co.
Headquarters
10141 Olney Street
El Monte, CA 91731
Made in the USA

Contact Us
T: 626-454-8300
F: 626-454-8399
www.lalighting.com



Due to continued product improvements and enhancements, Los Angeles Lighting Manufacturing Company reserves the right to alter specifications, dimensions, data, and/or materials without notice. Please visit our website to view the most current information.

MADE IN THE U.S.A.

Revised 07-19-19

WARNING

ORDERING INFORMATION

EXAMPLE: MFF106-4-2L-PA-BPL1.5-DRDM-UNV-1/840

SERIES	LED LUMEN PACKAGE	EFFICACY	NOMINAL LENGTH	OPTICAL	ELECTRICAL	DRIVER	VOLTAGE	# OF LED ROW	CRI / CCT
MFF106			2L			DRDM	UNV	1	
MFF106 6" Wide Frameless Flat LED Luminaire	1 Nom. 1000 Lumens 2 Nom. 2000 Lumens 3 Nom. 3000 Lumens 4 Nom. 4000 Lumens *Additional Lumen Packages Available	(Blank) Standard HE High Efficacy (Only 1000 / 2000 / 3000 lumens Systems)	2L 2'	PA Clear Prismatic Acrylic FPA2 Frosted Clear Prismatic Acrylic, Nom. 0.125 FFA Flat Frosted Acrylic <i>See OPTICAL OPTIONS for Options</i>	BPL1.5 Emergency Battery Pack, Nom. 1500 lm <i>See BATTERY PACK OPTIONS for Options</i> WLC(LED RU) EnOcean Wireless Control <i>See SENSOR OPTIONS for Options</i> *Leave Blank if Not Specified <i>Additional Electrical Options</i>	DRDM 0-10V Dimming Driver <i>See DRIVER OPTIONS for Options</i>	UNV 120V-277V <i>See DRIVER OPTIONS for Options</i>	1 One LED Row	830 80+CRI / 3000K Color Temp. 835 80+CRI / 3500K Color Temp. 840 80+CRI / 4000K Color Temp. 850 80+CRI / 5000K Color Temp. *Additional Color Temp. Available

SYSTEM DATA

THESE ARE THE MOST POPULAR LUMEN PACKAGES. PLEASE CONSULT FACTORY FOR ADDITIONAL SYSTEM DATA.

LED LUMEN PACKAGE	NORMAL AMBIENT TEMPERATURE PRODUCT CODE	DELIVERED LUMENS	SYSTEM WATTS	LUMINAIRE EFFICACY	AMBIENT TEMP.	FLUORESCENT EQUIVALENT	IES FILES
1000 Lumens (Nominal)	MFF106-1-2L-PA-DRDM-UNV-1/840	778 lm	8.0 W	97.9 lm/W	-20°C / 35°C	1-F17T8	*
2000 Lumens (Nominal)	MFF106-2-2L-PA-DRDM-UNV-1/840	1487 lm	16.9 W	88.2 lm/W	-20°C / 35°C	2-F17T8, 1-F24T5HO	LA-T3268
3000 Lumens (Nominal)	MFF106-3-2L-PA-DRDM-UNV-1/840	2126 lm	26.5 W	80.3 lm/W	-20°C / 35°C	3-F17T8	*
4000 Lumens (Nominal)	MFF106-4-2L-PA-DRDM-UNV-1/840	2775 lm	26.4 W	105.3 lm/W	-20°C / 35°C	4-F17T8, 2-F24T5HO	*

LED LUMEN PACKAGE	NORMAL AMBIENT TEMPERATURE (HIGH EFFICACY) PRODUCT CODE	DELIVERED LUMENS	SYSTEM WATTS	LUMINAIRE EFFICACY	AMBIENT TEMP.	FLUORESCENT EQUIVALENT	IES FILES
1000 Lumens (Nominal)	MFF106-1HE-2L-PA-DRDM-UNV-1/840	750 lm	6.2 W	120.1 lm/W	-20°C / 35°C	1-F17T8	*
2000 Lumens (Nominal)	MFF106-2HE-2L-PA-DRDM-UNV-1/840	1476 lm	12.9 W	114.8 lm/W	-20°C / 35°C	2-F17T8, 1-F24T5HO	*
3000 Lumens (Nominal)	MFF106-3HE-2L-PA-DRDM-UNV-1/840	2151 lm	19.6 W	109.5 lm/W	-20°C / 35°C	3-F17T8	*

NOTE:
System data is based on 120V input voltage. Actual performance may differ as a result of end-user environment and application.

This fixture has been tested and listed in accordance with UL Standards. L.A. Lighting certifies that it will operate safely when installed properly, and within an ambient temperature range noted in the system data table.

Additional lumen packages and color temperatures available.

PERFORMANCE DATA

[VIEW PHOTOMETRICS](#)



Los Angeles Lighting Mfg. Co.
Headquarters
10141 Olney Street
El Monte, CA 91731
Made in the USA

Contact Us
T: 626-454-8300
F: 626-454-8399
www.lalighting.com



Due to continued product improvements and enhancements, Los Angeles Lighting Manufacturing Company reserves the right to alter specifications, dimensions, data, and/or materials without notice. Please visit our website to view the most current information.

MADE IN THE U.S.A.

Revised 07-19-19

WARNING

SENSOR OPTIONS



CONTROLS AND SENSORS

WLC(LEDRU) - EnOcean® LED Relay Zone Controller

- Supports a single LED fixture or multiple daisy chained LED fixtures
- Module installed inside lighting fixture

ESRPU-W-EO - EnOcean® Rocker Switch – Single – Surface Mount

- Wireless single rocker switch with mounting plate
- No batteries needed

ESDRPU-W-EO - EnOcean® Rocker Switch – Double – Surface Mount

- Wireless double rocker switch with mounting plate
- No batteries needed

S3054-N30 - EnOcean® Navigan NWC 300U – Commissioning Tool

- Navigan Wireless Commissioner is used to configure EnOcean controllers & sensors
- It can be used to define link tables, change parameters/settings, and to edit & store projects
- Configuration settings can be saved and cloned to enable quick configuration
- Connectivity is through the NWC 300U USB Stick

EOSWU-W-EO - EnOcean® Occupancy Sensor – Wall Mount

- Wireless wall mounted occupancy sensor
- Solar powered - no batteries needed (coin battery operated in low light conditions)
- PIR motion sensor with both wide angle (50') and long range (100') options
- Mounting height: 6-8 feet

EOSCU-W-EO - EnOcean® Occupancy Sensor – Ceiling Mount

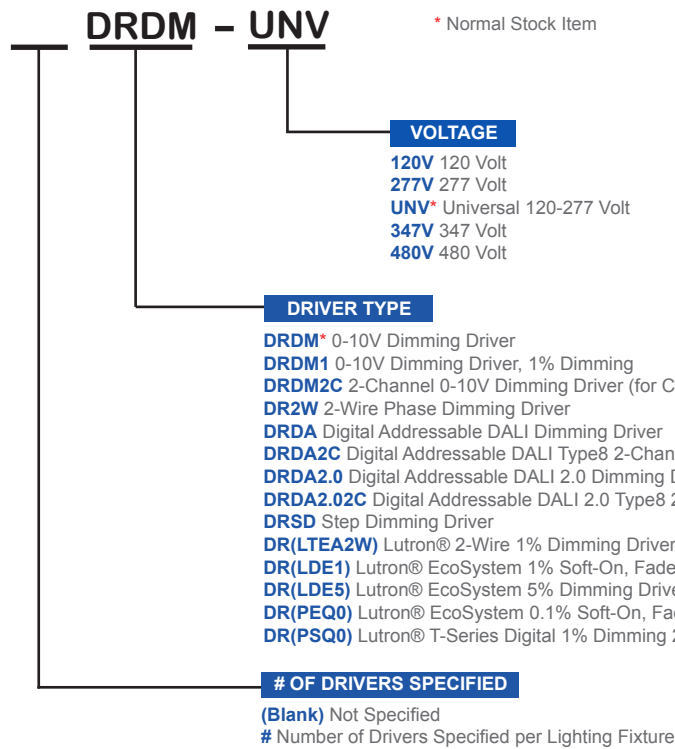
- Wireless ceiling mounted occupancy sensor
- Solar powered - no batteries needed (coin battery operated in low light conditions)
- PIR motion sensor with 360 degree viewing angle lens (34' diameter)
- Mounting height: 7-10 feet

ELLSU-W-EO - EnOcean® Light Level Sensor – Ceiling Mount

- Light Level sensor that measures and reports the level of available natural light
- Solar powered - no batteries needed (coin battery operated in low light conditions)
- Enables implementation of daylight harvesting control systems
- Mounting position: At the ceiling, close to ambient light source

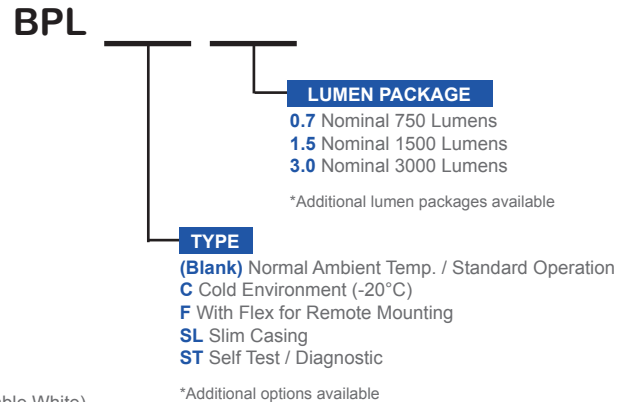
DRIVER OPTIONS

PLEASE CONSULT FACTORY TO SEE IF YOUR SELECTED DRIVER OPTION WORKS WITH THIS FIXTURE.



BATTERY PACK OPTIONS

PLEASE CONSULT FACTORY TO SEE IF YOUR SELECTED BATTERY PACK OPTION WORKS WITH THIS FIXTURE.



Los Angeles Lighting Mfg. Co.
Headquarters
10141 Olney Street
El Monte, CA 91731
Made in the USA

Contact Us
T: 626-454-8300
F: 626-454-8399
www.lalighting.com



Due to continued product improvements and enhancements, Los Angeles Lighting Manufacturing Company reserves the right to alter specifications, dimensions, data, and/or materials without notice. Please visit our website to view the most current information.

MADE IN THE U.S.A.

Revised 07-19-19

WARNING

OPTICAL OPTIONS

STANDARD LENSES FOR MFF106

PA	Clear Prismatic Acrylic, No Thickness Specified, Female Prisms 3/16 Square Base
FPA2	Frosted Prismatic Acrylic, Nom. 0.125 OA Thickness, Female Prisms 3/16 Square Base
FFA	Flat Frosted Acrylic

CUSTOM COLORS

- BLK - Matte Black
- CS - Camaro Silver
- BZ - Statuary Bronze

Variety of RAL colors & Axalta/DuPont colors available upon request.



Los Angeles Lighting Mfg. Co.
 Headquarters
 10141 Olney Street
 El Monte, CA 91731
 Made in the USA

Contact Us
 T: 626-454-8300
 F: 626-454-8399
 www.lalighting.com



Due to continued product improvements and enhancements, Los Angeles Lighting Manufacturing Company reserves the right to alter specifications, dimensions, data, and/or materials without notice. Please visit our website to view the most current information.

MADE IN THE U.S.A.

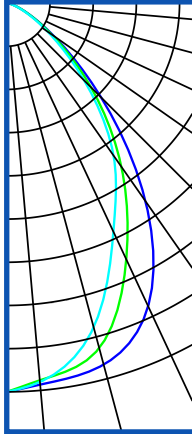
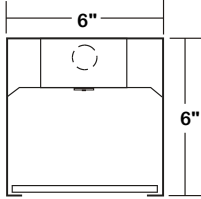
Revised 07-19-19

WARNING

PHOTOMETRIC DATA - MFF106 SERIES - 2'

MFF106-2-2L-PA-1DRDM-UNV-1/840

TEST NO. = LA-T3268
 LED TYPE = 32 LED MODULE
 NO. OF MODULE = 1
 SYSTEM WATT (W) = 16.9 W
 CRI ≥ 80
 L70(Hrs.) ≥ 50,000
 PHOTOMETRY TYPE = C



CANDLEPOWER

ANGLE	END	45	CROSS
0	1017	1017	1017
5	1002	991	995
15	979	935	878
25	875	740	660
35	633	523	487
45	349	311	287
55	150	143	131
65	54	51	48.7
75	15.1	14.6	13.7
85	2.1	1.7	1.6
90	0.06	0.05	0.06
95	0	0	0
105	0	0	0
115	0	0	0
125	0	0	0
135	0	0	0
145	0	0	0
155	0	0	0
165	0	0	0
175	0	0	0
180	0	0	0

ZONAL LUMEN SUMMARY

DEGREES	LUMENS	% LAMP	% FIXTURE
0-30	708	33.1	47.6
0-40	1048	48.9	70.5
0-60	1419	66.2	95.4
0-90	1487	69.4	100.0
90-120	0	0.0	0.0
90-150	0	0.0	0.0
90-180	0	0.0	0.0
0-180	1487	69.4	100.0

Luminaire Output = 1486.9 lumens
 Luminaire Efficacy = 87.98 lm/W

SPACING CRITERION

ALONG	ACROSS
1.12	0.9

