



WRAPAROUND



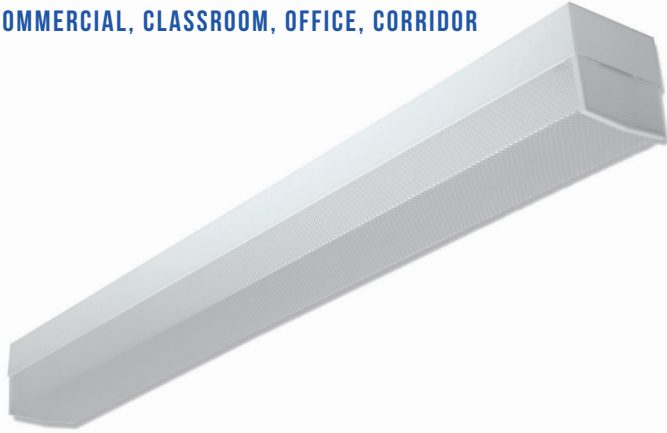
WCP100 (4FT) SERIES (8' AVAILABLE)
HIGH IMPACT SQUARE WRAPAROUND LUMINAIRE

DATE	
JOB	

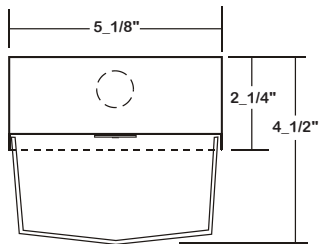
WWW.LALIGHTING.COM
626-454-8300

APPLICATIONS

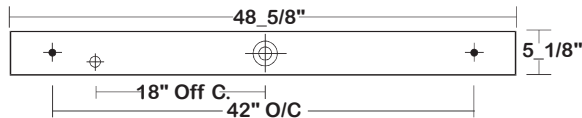
COMMERCIAL, CLASSROOM, OFFICE, CORRIDOR



DIMENSIONS



- ✦ 11/16" STEM MTG. K.O.
- ✦ 7/8" OFFSET K.O.
- ✦ 2" K.O.



SPECIFICATIONS

FEATURES

- Surface / pendant mounted LED luminaire
- 0-10V dimming driver standard (other dimming types available)
- Controls and sensors available
- Wireless control options (Lutron, EnOcean, ZigBee, etc.)
- Supports California Title 24 compliance
- Suitable for damp locations
- Additional lumen packages and color temperatures available
- Full customization available upon request

CONSTRUCTION

- 22 ga. cold rolled steel welded housing
- Finger actuated, spring-loaded stamped steel hinges and latch catch located on each lens end plate
- Neoprene gasket available
- Tamper proof screws available
- Wet location optional

OPTICAL

- High impact clear prismatic acrylic lens (minimum 0.125 thickness)
- Lens secured by spring loaded scissor clips

ELECTRICAL

- High efficiency drivers coupled with long-life LEDs
- Service life greater than 50,000 hours (L70)
- Universal voltage 120V through 277V (347V / 480V available)
- Emergency battery pack available

FINISH

- Baked white powder coated finish
- Painted after fabrication
- Minimum reflectance 90%
- Custom colors available

CUSTOM COLORS

BLK - Matte Black

CS - Camaro Silver

BZ - Statuary Bronze

Variety of RAL colors & Axalta/DuPont colors available upon request.

CERTIFICATIONS



ORDERING INFORMATION

EXAMPLE: WCP100-2-4L-DRP3-TP-BPL1.5-DRDM-UNV-1/840

SERIES	LED LUMEN PACKAGE	NOMINAL LENGTH	OPTICAL	MECHANICAL	ELECTRICAL	DRIVER	VOLTAGE	# OF LED ROW	CRI / CCT
WCP100		4L					UNV	1	
WCP100 High Impact Square Wraparound LED Luminaire	2 Nom. 2000 Lumens 4 Nom. 4000 Lumens 8 Nom. 8000 Lumens <i>*Additional Lumen Packages Available</i>	4L 4'	DRP3 High Impact Clear Prismatic Acrylic Min. 0.125 Thickness	TP Tamper Proof Screws (Hex Socket with Post) WL Wet Location (Electro Galvanized Steel Housing) GSK Gasket *Leave Blank if Not Specified <i>Additional Mechanical Options</i>	BPL1.5 Emergency Battery Pack MS Motion Sensor *Leave Blank if Not Specified <i>Additional Motion Sensor Options</i> <i>Additional Electrical Options</i>	DRDM 0-10V Dimming Driver <i>Additional Driver Options</i>	UNV 120V-277V *Additional Voltages Available	1 One LED Row	835 80+CRI / 3500K Color Temp. 840 80+CRI / 4000K Color Temp. 850 80+CRI / 5000K Color Temp. *Additional Color Temp. Available



Los Angeles Lighting Mfg. Co.

Headquarters
10141 Olney Street
El Monte, CA 91731
Made in the USA

Contact Us
T: 626-454-8300
F: 626-454-8399
www.lalighting.com

Due to continued product improvements and enhancements, Los Angeles Lighting Manufacturing Company reserves the right to alter specifications, dimensions, data, and/or materials without notice. Please visit our website to view the most current information.

Revised 09-13-17

SYSTEM DATA

NOMINAL SIZE	LED LUMEN PACKAGE	CRI / CCT	DELIVERED LUMENS	SYSTEM WATTS	LUMINAIRE EFFICACY	FLUORESCENT / HID EQUIVALENT	IES FILES
4'	2000 lm	840	1721 lm	17.8 W	96.7 lm/W	1-F32T8	LA-T2432
	4000 lm		3257 lm	34.7 W	93.9 lm/W	2-F32T8, 1-F54T5HO	LA-T2597
	8000 lm		6471 lm	66.4 W	97.5 lm/W	4-F32T8, 2-F54T5HO, 175 W (MH)	LA-T2598

NOTE:

System data above is based on 120V input voltage.

Actual performance may differ as a result of end-user environment and application.

This fixture has been tested and listed in accordance with UL Standards. L.A. Lighting certifies that it will operate safely when installed properly, and within an ambient temperature range from -20°C to 40°C.

Additional lumen packages and color temperatures available.


Los Angeles Lighting Mfg. Co.

Headquarters
10141 Olney Street
El Monte, CA 91731
Made in the USA

Contact Us
T: 626-454-8300
F: 626-454-8399
www.lalighting.com

Due to continued product improvements and enhancements, Los Angeles Lighting Manufacturing Company reserves the right to alter specifications, dimensions, data, and/or materials without notice. Please visit our website to view the most current information.