



# WRAPAROUND

## WSE200 (4FT) SERIES (3' AND 8' AVAILABLE)

HIGH IMPACT SECURITY WRAPAROUND LUMINAIRE



DATE	
JOB	

WWW.LALIGHTING.COM  
626-454-8300

### APPLICATIONS

COMMERCIAL, PARKING STRUCTURE,  
CLASSROOM, CORRIDOR, CANOPY



### SPECIFICATIONS

#### FEATURES

- Stem / suspension mounted LED luminaire (Aircraft Cable Mounting System available)
- 0-10V dimming driver standard (other dimming types available)
- Controls and sensors available
- Wireless control options (Lutron, EnOcean, ZigBee, etc.)
- Supports California Title 24 compliance
- Suitable for damp locations
- Additional lumen packages and color temperatures available
- Full customization available upon request

#### CONSTRUCTION

- 22 ga. cold rolled steel housing with 18 ga. end plates
- Spot welded seams and corners
- Full neoprene gasket
- Phillips head screws / tamper proof screws available
- Wet location available
- 45-degree mounting bracket available

#### OPTICAL

- 25% "DR" high impact linear pattern frosted acrylic lens
- Lens secured by steel lens retainers and 2 stainless steel knurled head thumb screws

#### ELECTRICAL

- High efficiency drivers coupled with long-life LEDs
- Service life tested at 148,000 hours (L70), 41,000 hours (L90)
- Universal voltage 120V through 277V (347V / 480V available)
- Emergency battery pack available

#### FINISH

- Baked white powder coated finish
- Minimum reflectance 90%
- Welded and painted after fabrication
- Custom colors available

#### CUSTOM COLORS

BLK - Matte Black

CS - Camaro Silver

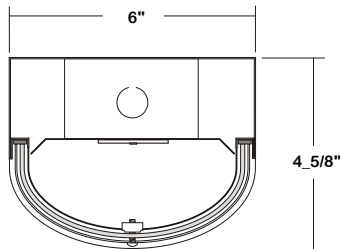
BZ - Statuary Bronze

Variety of RAL colors & Axalta/DuPont colors available upon request.

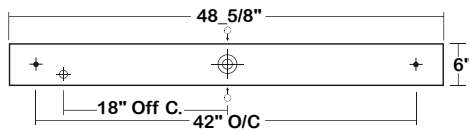
#### CERTIFICATIONS



### DIMENSIONS



- 1 1/16" STEM MTG. K.O.
- 7/8" OFFSET K.O.
- 2" K.O.
- 7/8" K.O. ON SIDE OF HOUSING FOR 1/2" CONDUIT



### ORDERING INFORMATION

EXAMPLE: WSE200-4-4L-BPL-1DRDM-UNV-1/840

SERIES	LED LUMEN PACKAGE	NOMINAL LENGTH	MECHANICAL	ELECTRICAL	DRIVER	VOLTAGE	# OF LED ROW	CRI / CCT
<b>WSE200</b>		<b>4L</b>				<b>UNV</b>	<b>1</b>	
<b>WSE200</b> High Impact Security Wraparound LED Luminaire	<b>2</b> Nom. 2000 Lumens <b>4</b> Nom. 4000 Lumens <b>6</b> Nom. 6000 Lumens <b>8</b> Nom. 8000 Lumens <i>*Additional Lumen Packages Available</i>	<b>4L</b> 4'	<b>TP</b> Tamper Proof Screws (Hex Socket w/Post) <b>PH</b> Phillips Head Screws <b>WL</b> Wet Location (Electro Galvanized Steel Housing)  <i>*Leave Blank for Standard Knurled Head Screws</i> <i>Additional Mechanical Options</i>	<b>BPL</b> Emergency Battery Pack <b>MSxx</b> Motion Sensor (End-Mounted) <b>SDxx</b> Step Dimming Control  <i>*Leave Blank if Not Specified</i> <i>Additional Motion Sensor Options</i> <i>Additional Electrical Options</i>	<b>1DRDM</b> 0-10V One Dimming Driver  <i>Additional Driver Options</i>	<b>UNV</b> 120V-277V  <i>*Additional Voltages Available</i>	<b>1</b> One LED Row	<b>835</b> 80+CRI / 3500K Color Temp.  <b>840</b> 80+CRI / 4000K Color Temp.  <b>850</b> 80+CRI / 5000K Color Temp.  <i>*Additional Color Temp. Available</i>



Los Angeles Lighting Mfg. Co.

Headquarters  
10141 Olney Street  
El Monte, CA 91731  
Made in the USA

Contact Us  
T: 626-454-8300  
F: 626-454-8399  
www.lalighting.com

Due to continued product improvements and enhancements, Los Angeles Lighting Manufacturing Company reserves the right to alter specifications, dimensions, data, and/or materials without notice. Please visit our website to view the most current information.

Revised 11-01-17

SYSTEM DATA

NOMINAL SIZE	LED LUMEN PACKAGE	CRI / CCT	DELIVERED LUMENS	SYSTEM WATTS	LUMINAIRE EFFICACY	FLUORESCENT / HID EQUIVALENT	IES FILES
4'	4000 lm *	840	3667 lm	34.62 W	105.9 lm/W	2-F32T8, 1-F54T5HO	<a href="#">LA-T3104</a>
		850	3739 lm	35.04 W	106.7 lm/W		*
	6000 lm *	840	5394 lm	49.89 W	108.1 lm/W	3-F32T8	<a href="#">LA-T3105</a>
		850	5557 lm	50.78 W	109 lm/W		*
	8000 lm *	840	7588 lm	65.27 W	116.3 lm/W	4-F32T8, 2-F54T5HO, 175 W (MH)	<a href="#">LA-T2873-1</a>
		850	8026 lm	66.77 W	120 lm/W		*

**NOTE:**

System data above is based on 120V input voltage.  
 Actual performance may differ as a result of end-user environment and application.  
 This fixture has been tested and listed in accordance with UL Standards. L.A. Lighting certifies that it will operate safely when installed properly, and within an ambient temperature range from -20°C to 40°C.

Additional lumen packages and color temperatures available.

Due to constant updates on this product, please visit the [DLC QPL Website](#) for the most accurate system data and information.



**DLC part numbers:**

- 3-WSE200-4K-4L-xxxx-xxxx-1DRDM-UNV-1/840
- 3-WSE200-4K-4L-xxxx-xxxx-1DRDM-UNV-1/850
- 3-WSE200-6K-4L-xxxx-xxxx-1DRDM-UNV-1/840
- 3-WSE200-6K-4L-xxxx-xxxx-1DRDM-UNV-1/850
- 3-WSE200-8K-4L-xxxx-xxxx-1DRDM-UNV-1/840
- 3-WSE200-8K-4L-xxxx-xxxx-1DRDM-UNV-1/850

PERFORMANCE DATA

VIEW LIGHTING FACTS

VIEW PHOTOMETRICS

ACCESSORIES

- 433B**
- Blank Canopy with Cable
  - No Power Cord
  - Cable Length 48" and 96"
  - Max. Weight 196 lbs. Per Set

**433B-48 W**

**COLOR**

- W White Standard
- B Black

**CABLE LENGTH**

- 48" and 96" Standard
- (Other Lengths As Specified)

- 444F**
- Feed-In Canopy with Straight Cord
  - Includes Power Cord
  - Cable Length 48" and 96"
  - Max. Weight 196 lbs. Per Set

**444F-48SW-2C**

**# OF CIRCUIT**

- 2C Two Circuits
- LV 0-10V Dimming
- Leave blank for one circuit

**COLOR**

- W White Standard
- B Black

**CORD TYPE**

- S Straight Cord

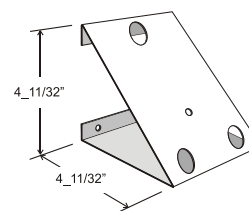
**CABLE LENGTH**

- 48" and 96" Standard
- (Other Lengths As Specified)

**45MB**

- 45-Degree Mounting Bracket
- Designed for mounting lighting fixtures at 45° angle
- Ideal for wall or ceiling mount applications
- 18 ga. electro galvanized steel
- Baked white powder coated finish

Note: Must drill own holes for 45-Degree Mounting Bracket.



**Los Angeles Lighting Mfg. Co.**

Headquarters  
 10141 Olney Street  
 El Monte, CA 91731  
 Made in the USA

Contact Us  
 T: 626-454-8300  
 F: 626-454-8399  
[www.lalighting.com](http://www.lalighting.com)

Due to continued product improvements and enhancements, Los Angeles Lighting Manufacturing Company reserves the right to alter specifications, dimensions, data, and/or materials without notice. Please visit our website to view the most current information.

## LED lighting facts

### 3-WSE200-4K-4L-1DRDM-UNV-1/840

- 4000 Lumen System
- L70 performance at 148,000 hours



Los Angeles Lighting Mfg. Co.

**LED lighting facts**  
A Program of the U.S. DOE

Light Output (Lumens)	3667
Watts	34.62
Lumens per Watt (Efficacy)	105.9

Color Accuracy Color Rendering Index (CRI)	84
---	----

**Light Color**  
Correlated Color Temperature (CCT) **4083 (Bright White)**

2700K 3000K 4500K 6500K

All results are according to IESNA LM-79-2008: *Approved Method for the Electrical and Photometric Testing of Solid-State Lighting*. The U.S. Department of Energy (DOE) verifies product test data and results.

Visit [www.lightingfacts.com](http://www.lightingfacts.com) for the *Label Reference Guide*.

Registration Number: -OMAXD3 (1/26/2016)  
Model Number: 3-WSE20x-4K-4L-xxxx-xxxx-1DRDM-UNV-1/840  
Type: Luminaire - Linear

### 3-WSE200-4K-4L-1DRDM-UNV-1/850

- 4000 Lumen System
- L70 performance at 148,000 hours
- L90 performance at 41,000 hours



Los Angeles Lighting Mfg. Co.

**LED lighting facts**  
A Program of the U.S. DOE

Light Output (Lumens)	3739
Watts	35.04
Lumens per Watt (Efficacy)	106.71

Color Accuracy Color Rendering Index (CRI)	82
---	----

**Light Color**  
Correlated Color Temperature (CCT) **4747 (Daylight)**

2700K 3000K 4500K 6500K

All results are according to IESNA LM-79-2008: *Approved Method for the Electrical and Photometric Testing of Solid-State Lighting*. The U.S. Department of Energy (DOE) verifies product test data and results.

Visit [www.lightingfacts.com](http://www.lightingfacts.com) for the *Label Reference Guide*.

Registration Number: -E4XGXH (1/26/2016)  
Model Number: 3-WSE20x-4K-4L-xxxx-xxxx-1DRDM-UNV-1/850  
Type: Luminaire - Linear

### 3-WSE200-6K-4L-1DRDM-UNV-1/840

- 6000 Lumen System
- L70 performance at 97,000 hours
- L90 performance at 27,000 hours



Los Angeles Lighting Mfg. Co.

**LED lighting facts**  
A Program of the U.S. DOE

Light Output (Lumens)	5394
Watts	49.89
Lumens per Watt (Efficacy)	108.12

Color Accuracy Color Rendering Index (CRI)	84
---	----

**Light Color**  
Correlated Color Temperature (CCT) **3934 (Bright White)**

2700K 3000K 4500K 6500K

All results are according to IESNA LM-79-2008: *Approved Method for the Electrical and Photometric Testing of Solid-State Lighting*. The U.S. Department of Energy (DOE) verifies product test data and results.

Visit [www.lightingfacts.com](http://www.lightingfacts.com) for the *Label Reference Guide*.

Registration Number: -Z6TUUL (1/26/2016)  
Model Number: 3-WSE20x-6K-4L-xxxx-xxxx-1DRDM-UNV-1/840  
Type: Luminaire - Linear

### 3-WSE200-6K-4L-1DRDM-UNV-1/850

- 6000 Lumen System
- L70 performance at 97,000 hours



Los Angeles Lighting Mfg. Co.

**LED lighting facts**  
A Program of the U.S. DOE

Light Output (Lumens)	5557
Watts	50.78
Lumens per Watt (Efficacy)	109.43

Color Accuracy Color Rendering Index (CRI)	83
---	----

**Light Color**  
Correlated Color Temperature (CCT) **5238 (Daylight)**

2700K 3000K 4500K 6500K

All results are according to IESNA LM-79-2008: *Approved Method for the Electrical and Photometric Testing of Solid-State Lighting*. The U.S. Department of Energy (DOE) verifies product test data and results.

Visit [www.lightingfacts.com](http://www.lightingfacts.com) for the *Label Reference Guide*.

Registration Number: -8Q7EXP (1/26/2016)  
Model Number: 3-WSE20x-6K-4L-xxxx-xxxx-1DRDM-UNV-1/850  
Type: Luminaire - Linear



**LOS ANGELES LIGHTING MFG. CO.**

10141 OLNEY ST. / EL MONTE, CA 91731

TEL 626-454-8300 | FAX 626-454-8399 |

[www.lalighting.com](http://www.lalighting.com)

## LED lighting facts

### 3-WSE200-8K-4L-1DRDM-UNV-1/840

- 8000 Lumen System
- L70 performance at 116,000 hours
- L90 performance at 33,000 hours



Los Angeles Lighting Mfg. Co.

**LED lighting facts**  
A Program of the U.S. DOE

Light Output (Lumens)	7588
Watts	65.27
Lumens per Watt (Efficacy)	116.26

---

**Color Accuracy**  
Color Rendering Index (CRI) **84**

---

**Light Color**  
Correlated Color Temperature (CCT) **4105 (Bright White)**

2700K    3000K    4500K    6500K

Warm White    Bright White    Daylight

All results are according to IESNA LM-79-2008: *Approved Method for the Electrical and Photometric Testing of Solid-State Lighting*. The U.S. Department of Energy (DOE) verifies product test data and results.

Visit [www.lightingfacts.com](http://www.lightingfacts.com) for the *Label Reference Guide*.

Registration Number: -4UGDA4 (1/26/2016)  
Model Number: 3-WSE20x-8K-4L-xxxx-xxxx-1DRDM-UNV-1/840  
Type: Luminaire - Linear

### 3-WSE200-8K-4L-1DRDM-UNV-1/850

- 8000 Lumen System
- L70 performance at 116,000 hours
- L90 performance at 33,000 hours



Los Angeles Lighting Mfg. Co.

**LED lighting facts**  
A Program of the U.S. DOE

Light Output (Lumens)	8026
Watts	66.77
Lumens per Watt (Efficacy)	120.2

---

**Color Accuracy**  
Color Rendering Index (CRI) **83**

---

**Light Color**  
Correlated Color Temperature (CCT) **5187 (Daylight)**

2700K    3000K    4500K    6500K

Warm White    Bright White    Daylight

All results are according to IESNA LM-79-2008: *Approved Method for the Electrical and Photometric Testing of Solid-State Lighting*. The U.S. Department of Energy (DOE) verifies product test data and results.

Visit [www.lightingfacts.com](http://www.lightingfacts.com) for the *Label Reference Guide*.

Registration Number: -1LS4VX (1/26/2016)  
Model Number: 3-WSE20x-8K-4L-xxxx-xxxx-1DRDM-UNV-1/850  
Type: Luminaire - Linear

This Space is intentionally left blank.



**LOS ANGELES LIGHTING MFG. CO.**

10141 OLNEY ST. / EL MONTE, CA 91731

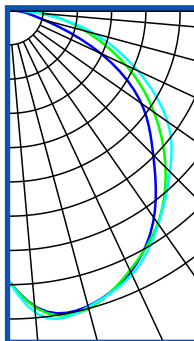
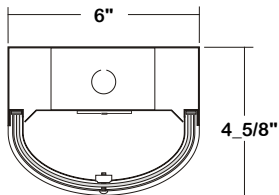
TEL 626-454-8300 | FAX 626-454-8399 |

[www.lalighting.com](http://www.lalighting.com)

**PHOTOMETRIC DATA - WSE200**

**WSE200-8-4L-1DRDM-UNV-1/840**

TEST NO.=LA-T2873-1  
 LED TYPE= 32 LED MODULE  
 NO. OF MODULE=2  
 SYSTEM WATT (W)=65.27 W  
 CRI ≥ 80  
 L70(Hrs.) ≥ 50,000  
 PHOTOMETRY TYPE=C



**CANDLEPOWER**

ANGLE	END	45	CROSS
0	2316	2316	2316
5	2312	2305	2304
15	2194	2133	2231
25	1964	2039	2109
35	1642	1808	1937
45	1268	1532	1715
55	893	1223	1449
65	556	909	1156
75	268	618	871
85	49	379	613
90	0	288	502
95	0	218	403
105	0	132	252
115	0	81	155
125	0	51	97
135	0	30	61
145	0	14	35
155	0	4	13
165	0	0	0
175	0	0	0
180	0	0	0

**ZONAL LUMEN SUMMARY**

DEGREES	LUMENS	% FIXTURE
0-40	2904	38.4
0-60	5140	67.9
0-90	7041	93.0
90-180	529	7.0
0-180	7588	100.0

Luminaire Output= 7588 lumens  
 Luminaire Efficacy = 116.3 LPW

**SPACING CRITERION**

ALONG	ACROSS
1.17	1.17

This Space is intentionally left blank.

This Space is intentionally left blank.

This Space is intentionally left blank.

