



WRAPAROUND LED

WSE201 (4FT) SERIES (2' AND 8' AVAILABLE)

SENSOR CONTROLLED HIGH IMPACT RADIAL SECURITY WRAPAROUND LUMINAIRE

| | |
|------|--|
| DATE | |
| JOB | |

WWW.LALIGHTING.COM
626-454-8300

APPLICATIONS

COMMERCIAL, PARKING STRUCTURE,
CLASSROOM, CORRIDOR, CANOPY



SPECIFICATIONS

FEATURES

- Stem / suspension mounted LED luminaire (Aircraft Cable Mounting System available)
- 0-10V dimming driver standard (other dimming types available)
- Controls and sensors available
- Wireless control options (Lutron, EnOcean, ZigBee, etc.)
- Supports California Title 24 compliance
- Suitable for damp locations
- Additional lumen packages and color temperatures available
- Full customization available upon request

CONSTRUCTION

- 22 ga. cold rolled steel housing with 18 ga. end plates
- Spot welded seams and corners
- Full neoprene gasket
- Phillips head screws / tamper proof screws available
- Wet location available
- 45-degree mounting bracket available

OPTICAL

- 25% "DR" high impact linear pattern frosted acrylic lens
- Lens secured by steel lens-retainers and 2 stainless steel knurled head thumb screws

ELECTRICAL

- Wide range infrared sensor with several mounting options and integral light level daylighting feature from 2-55 fc.
- High efficiency drivers coupled with long-life LEDs
- Service life tested at 50,000-148,000 hours (L70), 41,000 hours (L90)
- Universal voltage 120V through 277V (347V / 480V available)
- Emergency battery pack available

FINISH

- Baked white powder coated finish / minimum reflectance 90%
- Welded and painted after fabrication / custom colors available

CUSTOM COLORS

BLK - Matte Black

CS - Camaro Silver

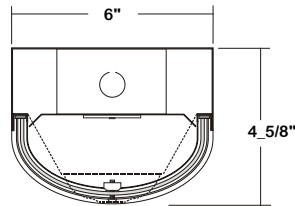
BZ - Statuary Bronze

Variety of RAL colors & Axalta/DuPont colors available upon request.

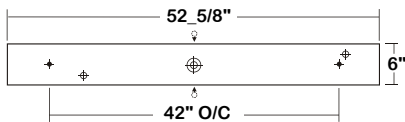
CERTIFICATIONS



DIMENSIONS



- 11/16" STEM MTG. K.O.
- 7/8" OFFSET K.O.
- 2" K.O.
- 7/8" K.O. ON SIDE OF HOUSING FOR 1/2" CONDUIT



ORDERING INFORMATION

EXAMPLE: WSE201-4-4L-BPL-MSxx-1DRDM-UNV-1/850

| SERIES | LED LUMEN PACKAGE | NOMINAL LENGTH | MECHANICAL | ELECTRICAL | SENSOR CONFIGURATION | DRIVER | VOLTAGE | # OF LED ROW | CRI / CCT |
|--|---|----------------|--|---|--|---|---|------------------|---|
| WSE201 | | 4L | | | | | UNV | 1 | |
| WSE201 Sensor Controlled High Impact Radial Security Wraparound LED Luminaire | 2 Nom. 2000 Lumens 4 Nom. 4000 Lumens 6 Nom. 6000 Lumens 8 Nom. 8000 Lumens <i>*Additional Lumen Packages Available</i> | 4L 4' | TP Tamper Proof Screws (Hex Socket w/Post) PH Phillips Head Screws WL Wet Location (Electro Galvanized Steel Housing) <i>*Leave Blank for Standard Knurled Head Screws</i> | BPL Emergency Battery Pack <i>*Leave Blank if Not Specified</i> <i>Additional Electrical Options</i> | MSxx Motion Sensor WLC(XXXXX) Wireless Control <i>*Leave Blank if Not Specified</i> <i>See SENSOR CONFIGURATION for Options</i> | 1DRDM 0-10V One Dimming Driver <i>Additional Driver Options</i> | UNV 120V-277V <i>*Additional Voltages Available</i> | 1 One LED Row | 835 80+CRI / 3500K Color Temp. 840 80+CRI / 4000K Color Temp. 850 80+CRI / 5000K Color Temp. <i>*Additional Color Temp. Available</i> |



Los Angeles Lighting Mfg. Co.

Headquarters
10141 Olney Street
El Monte, CA 91731
Made in the USA

Contact Us
T: 626-454-8300
F: 626-454-8399
www.lalighting.com

Due to continued product improvements and enhancements, Los Angeles Lighting Manufacturing Company reserves the right to alter specifications, dimensions, data, and/or materials without notice. Please visit our website to view the most current information.

Revised 10-31-18

SYSTEM DATA

| NOMINAL SIZE | LED LUMEN PACKAGE | CRI / CCT | DELIVERED LUMENS | SYSTEM WATTS | LUMINAIRE EFFICACY | FLUORESCENT / HID EQUIVALENT | IES FILES |
|--------------|-------------------|-----------|------------------|--------------|--------------------|--------------------------------|--------------------------|
| 4' | 2000 lm | 835 | 1611 lm | 17.8 W | 90.5 lm/W | 1-F32T8 | LA-T2770 |
| | 4000 lm* | 840 | 3573 lm | 34.62 W | 103.1 lm/W | 2-F32T8, 1-F54T5HO | LA-T2683 |
| | | 850 | 3739 lm | 35.04 W | 107 lm/W | 2-F32T8 | * |
| | 6000 lm* | 840 | 5394 lm | 49.89 W | 108.1 lm/W | 3-F32T8 | * |
| | | 850 | 5557 lm | 50.78 W | 109 lm/W | | * |
| | 8000 lm* | 840 | 7588 lm | 64.99 W | 116.3 lm/W | 4-F32T8, 2-F54T5HO, 175 W (MH) | LA-T2873 |
| 850 | | 8026 lm | 66.77 W | 120 lm/W | * | | |

NOTE:
 System data above is based on 120V input voltage.
 Actual performance may differ as a result of end-user environment and application.
 This fixture has been tested and listed in accordance with UL Standards. L.A. Lighting certifies that it will operate safely when installed properly, and within an ambient temperature range from -20°C to 40°C.

Additional lumen packages and color temperatures available.

Due to constant updates on this product, please visit the [DLC QPL Website](#) for the most accurate system data and information.

*** DLC part numbers:**
 3-WSE201-4K-4L-xxxxx-xxxx-1DRDM-UNV-1/840
 3-WSE201-4K-4L-xxxxx-xxxx-1DRDM-UNV-1/850
 3-WSE201-6K-4L-xxxxx-xxxx-1DRDM-UNV-1/840
 3-WSE201-6K-4L-xxxxx-xxxx-1DRDM-UNV-1/850
 3-WSE201-8K-4L-xxxxx-xxxx-1DRDM-UNV-1/840
 3-WSE201-8K-4L-xxxxx-xxxx-1DRDM-UNV-1/850

PERFORMANCE DATA

VIEW LIGHTING FACTS

VIEW PHOTOMETRICS

SENSOR CONFIGURATION

| | LENS | SHAPE | MOUNTING HEIGHT | COVERAGE | |
|---------------|------------|-------|-----------------|-----------|-----------|
| (LOWE) | Extra Wide | Cone | 8~10 ft | 2.4~3.0m | 6X Height |
| (HI) | High Bay | Cone | 15~30 ft | 4.5~9.0m | 3X Height |
| (LOW) | Standard | Round | 8~20 ft. | 2.4~6.0m | 2X Height |
| (AIL) | Aisle Way | Arch | 8~40 ft. | 2.4~12.0m | 3X Height |

MS Turns light ON/OFF based on motion detection
MSPC Holds lights OFF when sufficient daylight is present regardless of motion detection
MSPCD Variably Dims output to desired footcandles through photocell. Low setting when unoccupied. Full on with motion.

ACCESSORIES

433B

- Blank Canopy with Cable
- No Power Cord
- Cable Length 48" and 96"
- Max. Weight 196 lbs. Per Set

433B-48 W

COLOR
W White Standard
B Black

CABLE LENGTH
 48" and 96" Standard
 (Other Lengths As Specified)

444F

- Feed-In Canopy with Straight Cord
- Includes Power Cord
- Cable Length 48" and 96"
- Max. Weight 196 lbs. Per Set

444F-48SW-2C

OF CIRCUIT
2C Two Circuits
LV 0-10V Dimming
 Leave blank for one circuit

COLOR
W White Standard
B Black

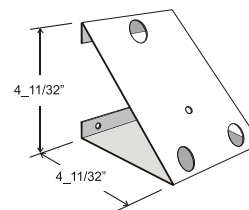
CORD TYPE
S Straight Cord

CABLE LENGTH
 48" and 96" Standard
 (Other Lengths As Specified)

45MB

- 45-Degree Mounting Bracket
- Designed for mounting lighting fixtures at 45° angle
- Ideal for wall or ceiling mount applications
- 18 ga. electro galvanized steel
- Baked white powder coated finish

Note: Must drill own holes for 45-Degree Mounting Bracket.



Los Angeles Lighting Mfg. Co.
 Headquarters
 10141 Olney Street
 El Monte, CA 91731
 Made in the USA

Contact Us
 T: 626-454-8300
 F: 626-454-8399
 www.lalighting.com

Due to continued product improvements and enhancements, Los Angeles Lighting Manufacturing Company reserves the right to alter specifications, dimensions, data, and/or materials without notice. Please visit our website to view the most current information.

SENSOR OPTIONS

LUTRON® CONTROLS AND SENSORS

WLC(VDO) - Lutron® Wireless Fixture Sensor

- Need Dexal driver
- One per fixture
- Turn light on/off based on motion
- 15 minutes time delay default
- Daylight sensor provide linear response to changes in light level.
- Up to 300 sq.ft major motion coverage and 150 sq.ft. minor motion coverage based on 9' mounting height.
- Work standalone or with Vive wireless control system
- Work with driver has integrated self-powered DALI link or Lutron EcoSystem driver (additional Lutron® digital link interface required)

WLC(VRF) - Lutron® Wireless Fixture Control

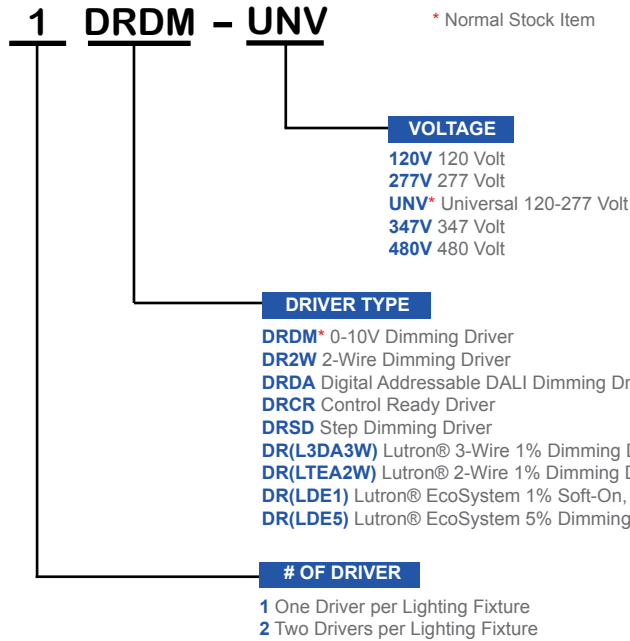
- Need Dexal driver
- One per fixture
- Wireless control module
- Work with Vive wireless control system
- Work with driver has integrated self-powered DaLI link or Lutron EcoSystem driver (additional Lutron® digital link interface required)

PJ2-2BRL - Lutron® Pico® 2-Button Wireless Remote

- Works with Wireless Fixture Controls
- Controls ON/OFF and dimming UP/DOWN

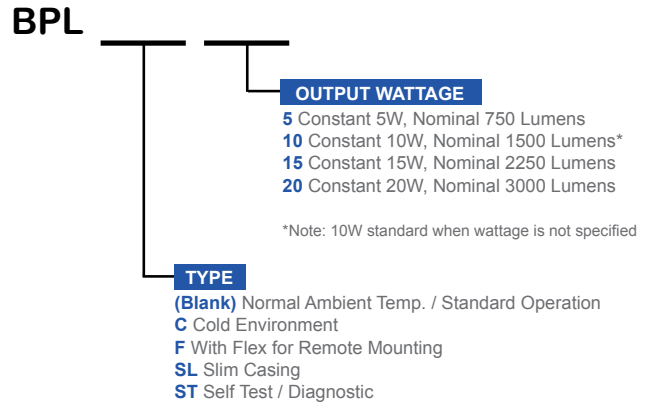
DRIVER OPTIONS

PLEASE CONSULT FACTORY TO SEE IF YOUR SELECTED DRIVER OPTION WORKS WITH THIS FIXTURE.



BATTERY PACK OPTIONS

PLEASE CONSULT FACTORY TO SEE IF YOUR SELECTED BATTERY PACK OPTION WORKS WITH THIS FIXTURE.



Los Angeles Lighting Mfg. Co.

Headquarters
10141 Olney Street
El Monte, CA 91731
Made in the USA

Contact Us
T: 626-454-8300
F: 626-454-8399
www.lalighting.com

Due to continued product improvements and enhancements, Los Angeles Lighting Manufacturing Company reserves the right to alter specifications, dimensions, data, and/or materials without notice. Please visit our website to view the most current information.

LED lighting facts

3-WSE201-4K-4L-1DRDM-UNV-1/840

- 4000 Lumen System
- L70 performance at 148,000 hours



Los Angeles Lighting Mfg. Co.

LED lighting facts
A Program of the U.S. DOE

| | |
|----------------------------|-------|
| Light Output (Lumens) | 3667 |
| Watts | 34.62 |
| Lumens per Watt (Efficacy) | 105.9 |

Color Accuracy
Color Rendering Index (CRI) **84**

Light Color
Correlated Color Temperature (CCT) **4083 (Bright White)**

2700K 3000K 4500K 6500K

Warm White Bright White Daylight

All results are according to IESNA LM-79-2008: *Approved Method for the Electrical and Photometric Testing of Solid-State Lighting*. The U.S. Department of Energy (DOE) verifies product test data and results.

Visit www.lightingfacts.com for the *Label Reference Guide*.

Registration Number: -OMAXD3 (1/26/2016)
Model Number: 3-WSE20x-4K-4L-xxxx-xxxx-1DRDM-UNV-1/840
Type: Luminaire - Linear

3-WSE201-4K-4L-1DRDM-UNV-1/850

- 4000 Lumen System
- L70 performance at 148,000 hours
- L90 performance at 41,000 hours



Los Angeles Lighting Mfg. Co.

LED lighting facts
A Program of the U.S. DOE

| | |
|----------------------------|--------|
| Light Output (Lumens) | 3739 |
| Watts | 35.04 |
| Lumens per Watt (Efficacy) | 106.71 |

Color Accuracy
Color Rendering Index (CRI) **82**

Light Color
Correlated Color Temperature (CCT) **4747 (Daylight)**

2700K 3000K 4500K 6500K

Warm White Bright White Daylight

All results are according to IESNA LM-79-2008: *Approved Method for the Electrical and Photometric Testing of Solid-State Lighting*. The U.S. Department of Energy (DOE) verifies product test data and results.

Visit www.lightingfacts.com for the *Label Reference Guide*.

Registration Number: -E4XGXH (1/26/2016)
Model Number: 3-WSE20x-4K-4L-xxxx-xxxx-1DRDM-UNV-1/850
Type: Luminaire - Linear

3-WSE201-6K-4L-1DRDM-UNV-1/840

- 6000 Lumen System
- L70 performance at 97,000 hours
- L90 performance at 27,000 hours



Los Angeles Lighting Mfg. Co.

LED lighting facts
A Program of the U.S. DOE

| | |
|----------------------------|--------|
| Light Output (Lumens) | 5394 |
| Watts | 49.89 |
| Lumens per Watt (Efficacy) | 108.12 |

Color Accuracy
Color Rendering Index (CRI) **84**

Light Color
Correlated Color Temperature (CCT) **3934 (Bright White)**

2700K 3000K 4500K 6500K

Warm White Bright White Daylight

All results are according to IESNA LM-79-2008: *Approved Method for the Electrical and Photometric Testing of Solid-State Lighting*. The U.S. Department of Energy (DOE) verifies product test data and results.

Visit www.lightingfacts.com for the *Label Reference Guide*.

Registration Number: -Z6TUUL (1/26/2016)
Model Number: 3-WSE20x-6K-4L-xxxx-xxxx-1DRDM-UNV-1/840
Type: Luminaire - Linear

3-WSE201-6K-4L-1DRDM-UNV-1/850

- 6000 Lumen System
- L70 performance at 97,000 hours



Los Angeles Lighting Mfg. Co.

LED lighting facts
A Program of the U.S. DOE

| | |
|----------------------------|--------|
| Light Output (Lumens) | 5557 |
| Watts | 50.78 |
| Lumens per Watt (Efficacy) | 109.43 |

Color Accuracy
Color Rendering Index (CRI) **83**

Light Color
Correlated Color Temperature (CCT) **5238 (Daylight)**

2700K 3000K 4500K 6500K

Warm White Bright White Daylight

All results are according to IESNA LM-79-2008: *Approved Method for the Electrical and Photometric Testing of Solid-State Lighting*. The U.S. Department of Energy (DOE) verifies product test data and results.

Visit www.lightingfacts.com for the *Label Reference Guide*.

Registration Number: -8Q7EXP (1/26/2016)
Model Number: 3-WSE20x-6K-4L-xxxx-xxxx-1DRDM-UNV-1/850
Type: Luminaire - Linear



LOS ANGELES LIGHTING MFG. CO.

10141 OLNEY ST. / EL MONTE, CA 91731

TEL 626-454-8300 | FAX 626-454-8399 |

www.lalighting.com

LED lighting facts

3-WSE201-8K-4L-1DRDM-UNV-1/840

- 8000 Lumen System
- L70 performance at 116,000 hours
- L90 performance at 33,000 hours



Los Angeles Lighting Mfg. Co.

LED lighting facts
A Program of the U.S. DOE

| | |
|----------------------------|--------|
| Light Output (Lumens) | 7588 |
| Watts | 65.27 |
| Lumens per Watt (Efficacy) | 116.26 |

| | |
|---|----|
| Color Accuracy Color Rendering Index (CRI) | 84 |
|---|----|

Light Color
Correlated Color Temperature (CCT) **4105 (Bright White)**

2700K 3000K 4500K 6500K

All results are according to IESNA LM-79-2008: *Approved Method for the Electrical and Photometric Testing of Solid-State Lighting*. The U.S. Department of Energy (DOE) verifies product test data and results.

Visit www.lightingfacts.com for the *Label Reference Guide*.

Registration Number: -4UGDA4 (1/26/2016)
Model Number: 3-WSE20x-8K-4L-xxxx-xxxx-1DRDM-UNV-1/840
Type: Luminaire - Linear

3-WSE201-8K-4L-1DRDM-UNV-1/850

- 8000 Lumen System
- L70 performance at 116,000 hours
- L90 performance at 33,000 hours



Los Angeles Lighting Mfg. Co.

LED lighting facts
A Program of the U.S. DOE

| | |
|----------------------------|-------|
| Light Output (Lumens) | 8026 |
| Watts | 66.77 |
| Lumens per Watt (Efficacy) | 120.2 |

| | |
|---|----|
| Color Accuracy Color Rendering Index (CRI) | 83 |
|---|----|

Light Color
Correlated Color Temperature (CCT) **5187 (Daylight)**

2700K 3000K 4500K 6500K

All results are according to IESNA LM-79-2008: *Approved Method for the Electrical and Photometric Testing of Solid-State Lighting*. The U.S. Department of Energy (DOE) verifies product test data and results.

Visit www.lightingfacts.com for the *Label Reference Guide*.

Registration Number: -1LS4VX (1/26/2016)
Model Number: 3-WSE20x-8K-4L-xxxx-xxxx-1DRDM-UNV-1/850
Type: Luminaire - Linear

This Space is intentionally left blank.



LOS ANGELES LIGHTING MFG. CO.

10141 OLNEY ST. / EL MONTE, CA 91731

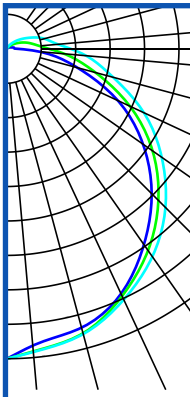
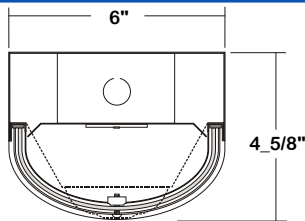
TEL 626-454-8300 | FAX 626-454-8399 |

www.lalighting.com

PHOTOMETRIC DATA - WSE201 SERIES

WSE201-4-4L-1DRDM-UNV-1/840

TEST NO.=LA-T2683
 LED TYPE= 32 LED MODULE
 NO. OF MODULE=2
 SYSTEM WATT (W)= 34.6
 CRI ≥ 80
 L70(Hrs.) = 148,000 hours
 PHOTOMETRY TYPE=C



CANDLEPOWER

| ANGLE | END | 45 | CROSS |
|-------|------|------|-------|
| 0 | 1102 | 1102 | 1102 |
| 5 | 1099 | 1096 | 1095 |
| 15 | 1042 | 1049 | 1058 |
| 25 | 932 | 966 | 998 |
| 35 | 778 | 856 | 916 |
| 45 | 600 | 725 | 811 |
| 55 | 423 | 580 | 686 |
| 65 | 263 | 431 | 550 |
| 75 | 126 | 292 | 414 |
| 85 | 22 | 176 | 291 |
| 90 | 0 | 132 | 238 |
| 95 | 0 | 99 | 190 |
| 115 | 0 | 36 | 71 |
| 125 | 0 | 22 | 44 |
| 135 | 0 | 13 | 28 |
| 145 | 0 | 6 | 16 |
| 155 | 0 | 1 | 6 |
| 165 | 0 | 0 | 1 |
| 175 | 0 | 0 | 0 |
| 180 | 0 | 0 | 0 |

ZONAL LUMEN SUMMARY

| DEGREES | LUMENS | % FIXTURE |
|---------|--------|-----------|
| 0-40 | 1376 | 38.5 |
| 0-60 | 2435 | 68.1 |
| 0-90 | 3332 | 93.3 |
| 90-180 | 240 | 6.7 |

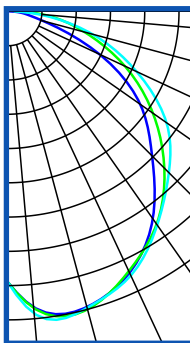
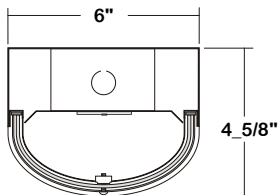
Luminaire Output= 3573 lumens
 Luminaire Efficacy = 105.9 LPW

SPACING CRITERION

| ALONG | ACROSS |
|-------|--------|
| 1.17 | 1.17 |

WSE201-8-4L-1DRDM-UNV-1/840

TEST NO.=LA-T2873
 LED TYPE= 32 LED MODULE
 NO. OF MODULE=2
 SYSTEM WATT (W)= 64.9W
 CRI ≥ 80
 L70(Hrs.) ≥ 50,000
 PHOTOMETRY TYPE=C



CANDLEPOWER

| ANGLE | END | 45 | CROSS |
|-------|------|------|-------|
| 0 | 2316 | 2316 | 2316 |
| 5 | 2312 | 2305 | 2304 |
| 15 | 2194 | 2133 | 2231 |
| 25 | 1964 | 2039 | 2109 |
| 35 | 1642 | 1808 | 1937 |
| 45 | 1268 | 1532 | 1715 |
| 55 | 893 | 1223 | 1449 |
| 65 | 556 | 909 | 1156 |
| 75 | 268 | 618 | 871 |
| 85 | 49 | 379 | 613 |
| 90 | 0 | 288 | 502 |
| 95 | 0 | 218 | 403 |
| 105 | 0 | 132 | 252 |
| 115 | 0 | 81 | 155 |
| 125 | 0 | 51 | 97 |
| 135 | 0 | 30 | 61 |
| 145 | 0 | 14 | 35 |
| 155 | 0 | 4 | 13 |
| 165 | 0 | 0 | 0 |
| 175 | 0 | 0 | 0 |
| 180 | 0 | 0 | 0 |

ZONAL LUMEN SUMMARY

| DEGREES | LUMENS | % FIXTURE |
|---------|--------|-----------|
| 0-40 | 2904 | 38.4 |
| 0-60 | 5140 | 67.9 |
| 0-90 | 7041 | 93.0 |
| 90-180 | 529 | 7.0 |
| 0-180 | 7588 | 100.0 |

Luminaire Output= 7588 lumens
 Luminaire Efficacy = 116.3 LPW

SPACING CRITERION

| ALONG | ACROSS |
|-------|--------|
| 1.17 | 1.17 |

This Space is intentionally left blank.

This Space is intentionally left blank.

