



SECURITY

ASE100 SERIES



Angled Wall / Ceiling Security Luminaire



- Angled Wall / Ceiling Security Luminaire
- Welded and Painted After Fabrication
- Full Length Piano Hinge and Captive Tamper Proof Screws
- Nominal .187 High Impact Clear Prismatic Acrylic Lens
- One Way Polyurethane Gasketed
- Suitable for Damp Locations
- Available with:
 - Fluorescent, LED and LED T8 (Internally Driven)
 - Variety of Lens
 - Emergency Battery Pack



Photometric Data and IES Files are Available on www.lalighting.com



LOS ANGELES LIGHTING MFG. CO.

10141 OLNEY ST. / EL MONTE, CA 91731

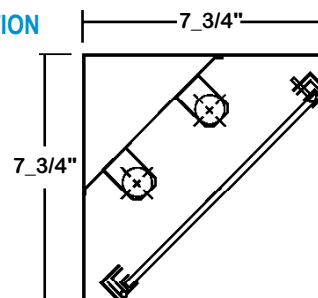
TEL : 626-454-8300 FAX : 626-454-8399

www.lalighting.com



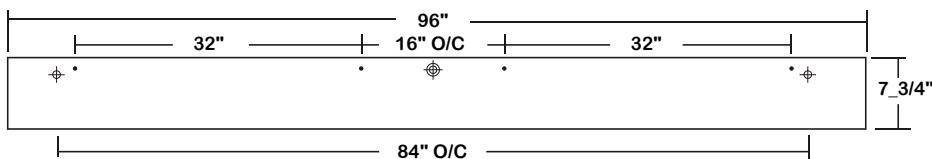
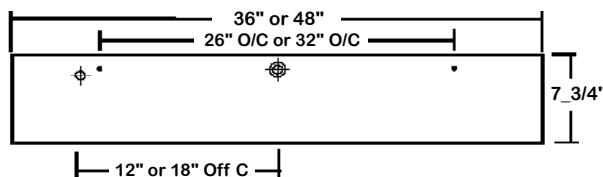
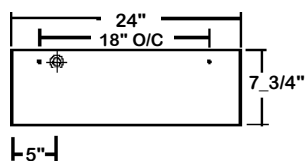
ASE100 SERIES

CROSS SECTION



BACK PLATE

- 3/8" K.O.
- ⊕ 7/8" K.O.
- ⊕ 2" K.O.

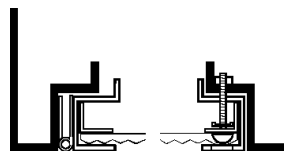


CATALOG NUMBER

	NOMINAL LENGTH	TOTAL LAMPS		NOMINAL LENGTH	TOTAL LAMPS
ASE100-1-2M	2'	1	ASE100-1-2R	2'	1
ASE100-1-3M	3'	1	ASE100-1-3R	3'	1
ASE100-1-4M	4'	1	ASE100-1-4R	4'	1
ASE100-1-8MT	8'	2	ASE100-1-8RT	8'	2
ASE100-2-2M	2'	2	ASE100-2-2R	2'	2
ASE100-2-3M	3'	2	ASE100-2-3R	3'	2
ASE100-2-4M	4'	2	ASE100-2-4R	4'	2
ASE100-2-8MT	4'	2	ASE100-2-8RT	4'	2

DOOR FRAME INFORMATION

● CROSS SECTION



● EXPLANATION

1. Continuous Piano Hinge.
2. Two Captive Tamper Proof Screws (Hex Socket With Post).
3. Inner Frame Lens Retainer Rail.

FS W

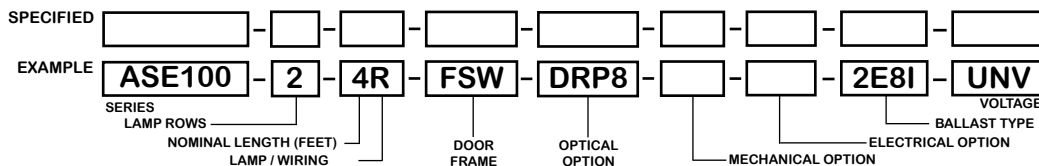
FINISHES

- W - White Enamel
- B - Black Enamel

STYLES

- FS - Flat Steel

ORDERING GUIDE



NOTE: LAMP/WIRING*

- M= Miniature Bi-Pin T5
- R = Medium Bi-Pin T8

OPTIONS AND ACCESSORIES

● OPTICAL OPTIONS

- High Impact Clear Prismatic Acrylic .187
- High Impact Clear Prismatic Acrylic .125
- Clear Prismatic Polycarbonate .125

* Other Lens Available Upon Request

● MECHANICAL OPTIONS

- Gasketing

SUFFIX

- DRP8
- DRP2
- PPC2

SUFFIX

- GSK*

● ELECTRICAL OPTIONS

- Emergency Battery Pack
- External Line Fusing (HLR/GLR)

SUFFIX

- BP*
- ELF

● BALLAST OPTIONS*

- Electronic T5
- Electronic T5HO
- Electronic T8 Instant Start
- Electronic T8 Rapid Start
- Electronic T8HO

SUFFIX

- xE5
- xE5H
- xE8I
- xE8R
- xE8H

*Refer to www.lalighting.com/resources for more information

x = Number of Lamps per Ballast

SPECIFICATIONS

- TYPE
- CONSTRUCTION
- FINISH
- DOOR FRAME
- GASKET
- OPTICS
- WIRING
- LABELS

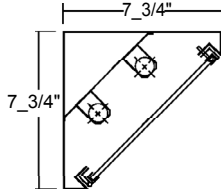
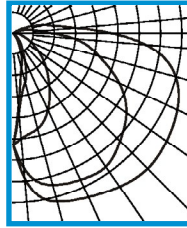
Surface mounted corner wall / ceiling security luminaire. Design for use in public areas where vandalism may be a problem.
 20 gauge cold rolled steel welded housing.
 Baked white powder coated finish, minimum reflectance 90%, painted after fabrication.
 20 gauge cold rolled steel. Full length piano hinge and 2 captive tamper proof screws (hex socket with post).
 Inner frame lens retainer rail.
 One way polyurethane gasketed standard. More options available.
 .187 high impact clear prismatic acrylic standard.
 120v 60Hz., 277v 60Hz., UNV (universal voltage 120v thru 277v.) or as otherwise specified.
 U.L. Listed. Suitable for damp locations.



PHOTOMETRIC DATA

ASE100-2-4R-FSW-DRP8-E8

TEST NO.=LA-T0686
 LAMP TYPE=FO32T8
 NO. OF LAMP=2
 LUMENS PER LAMP=2900
 WATTS PER LAMP=32
 BALLAST FACTOR=1
 PHOTOMETRY TYPE=C



CANDLEPOWER

ANGLE	0	45	90	135	180
0	966	966	966	966	966
5	1282	906	643	577	
15	1504	846	417	282	
25	1558	715	218	136	
35	1611	539	116	41	
45	1645	389	43	0	
55	1615	254	7	0	
65	1560	154	0	0	
75	1447	85	0	0	
85	1146	49	0	0	
90	858	23	0	0	
95	550	11	0	0	
105	286	1	0	0	
115	125	0	0	0	
125	32	0	0	0	
135	0	0	0	0	
145	0	0	0	0	
155	0	0	0	0	
165	0	0	0	0	
175	0	0	0	0	
180	0	0	0	0	

ZONAL LUMEN SUMMARY

DEGREES	LUMENS	% LAMP	% FIXTURE
0-30	704	12.1	19.5
0-40	1156	19.9	32.1
0-60	2158	37.2	59.9
0-90	3342	57.6	92.7
90-120	259	4.5	7.2
90-150	263	4.5	7.3
90-180	263	4.5	7.3
0-180	3606	62.2	100.0

Lumen Output = 3606 lumens
 Luminaire Efficiency = 62.2%

SPACING CRITERION

ALONG	ACROSS
2.24	1.01

This space is intentionally left blank.

This space is intentionally left blank.

This space is intentionally left blank.

